

# HATCHER'S YARD TANNER STREET SE1

TRANSFORMED, FLEXIBLE & FULLY FITTED WORKSPACES  
AVAILABLE AROUND A CENTRAL COURTYARD  
READY TO MOVE INTO STRAIGHT AWAY

[HATCHERSYARD.LONDON](https://hatchersyard.london)

HATCHER BROS. LTD.



'Hatcher Bros' were a haulage company operating from Hatcher's Yard, started by Thomas Hatcher in the 1800s.

A UNIQUE  
& FLEXIBLE  
WORKSPACE

With a rich history, this former haulage yard has been redeveloped, embracing its unique character and heritage. The newly refurbished units offer fully furnished, flexible and contemporary space, ready for your business to be up and running in no time.

# 7 FULLY FITTED WAREHOUSE STYLE OFFICE UNITS

3 UNITS READY FOR IMMEDIATE  
OCCUPATION & 4 UNITS COMING SOON  
608 - 2,630 SQ FT



## AVAILABILITY

### GROUND FLOOR

B2 1,016 sq ft

### FIRST FLOOR

A3 2,630 sq ft

A4 694 sq ft

B3 694 sq ft

B4 1,178 sq ft

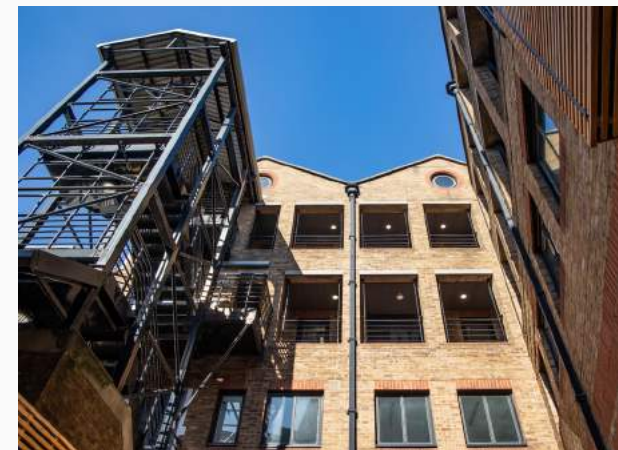
### SECOND FLOOR

B5 608 sq ft

B6 1,080 sq ft



THE YARD.  
A CENTRAL PRIVATE  
OUTDOOR SPACE TO  
COLLABORATE.





# JUST BRING YOUR LAPTOP

## WHAT DO I GET?

At Hatcher's Yard, each space is delivered fully furnished and cabled, making it easier than ever to move offices.

## WHO'S WELCOME?

From 6 to 24 desks, there's an office unit to suit each business.

## HOW LONG CAN I STAY?

Flexible leases allow us to grow with you.

## WHAT ABOUT MY BRAND?

Work with our dedicated designers to make the space your own.



FULLY FURNISHED



PRIVATE MEETING ROOMS



COLLABORATION SPACE



KITCHEN



FULLY CABLED



HEATING AND COOLING SYSTEM



LED LIGHTING



PRIVATE WGS



COMMUNAL SHOWER FACILITIES



COURTYARD AREA



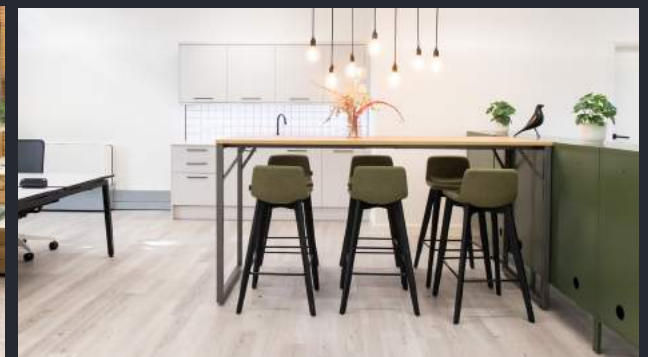
SECURE BIKE RACKS



PERSONALISATION OPTIONS



EASE OF ENTRY



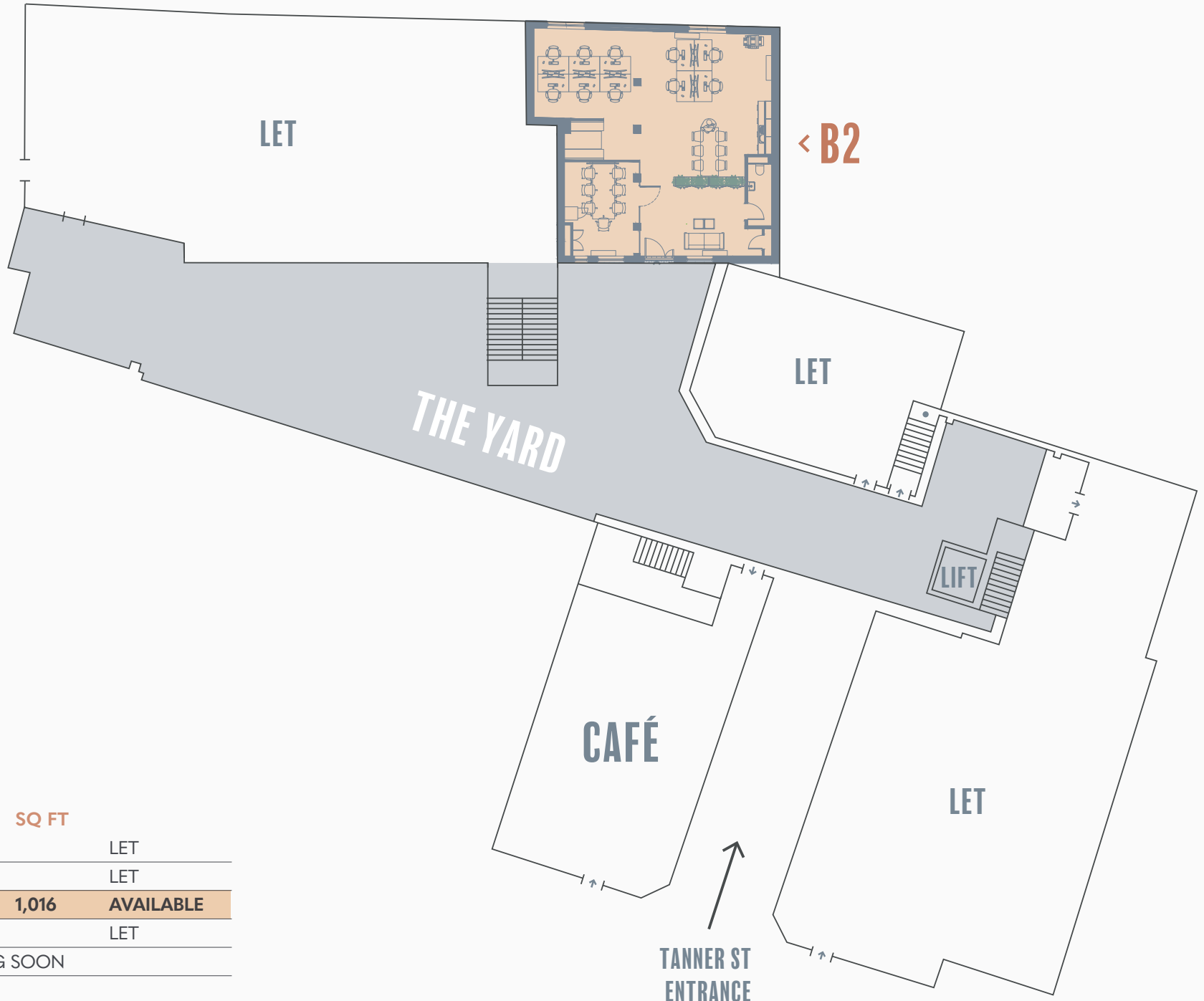
# B2

## GROUND FLOOR

1,016 SQ FT

- Space for 10 desks

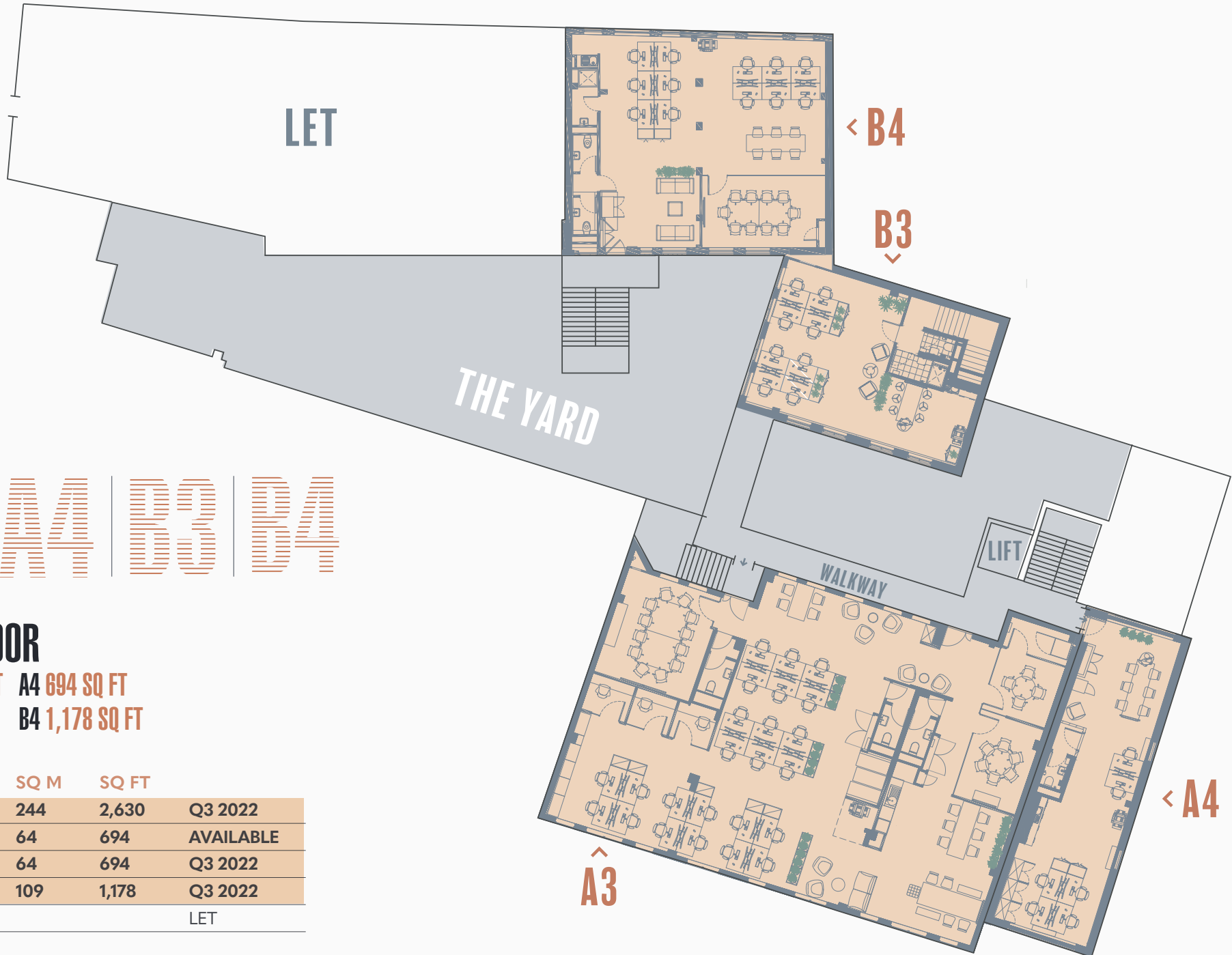
	SQ M	SQ FT	
UNIT A2			LET
UNIT B1			LET
<b>UNIT B2</b>	<b>94</b>	<b>1,016</b>	<b>AVAILABLE</b>
WGG			LET
CAFÉ	COMING SOON		



B2

GROUND FLOOR



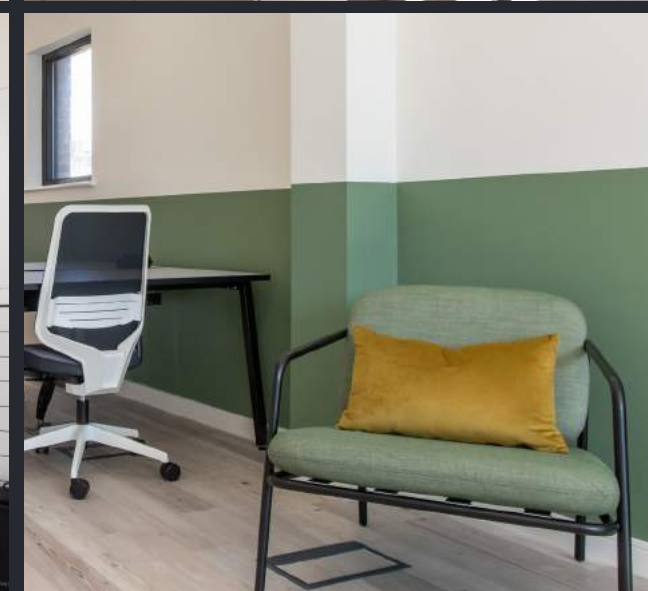


A3 | A4 | B3 | B4

## FIRST FLOOR

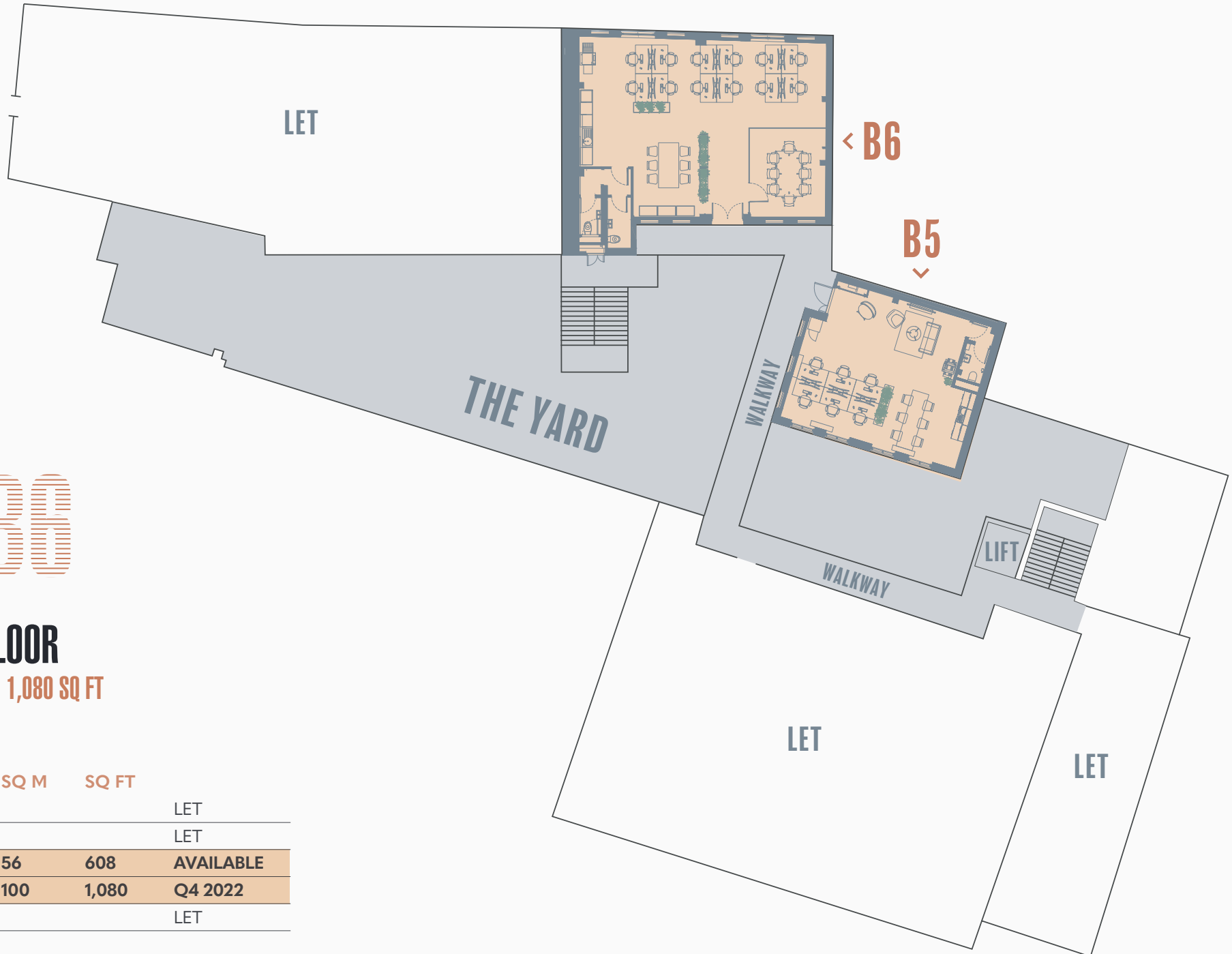
A3 2,630 SQ FT    A4 694 SQ FT  
 B3 694 SQ FT    B4 1,178 SQ FT

	SQ M	SQ FT	
UNIT A3	244	2,630	Q3 2022
UNIT A4	64	694	AVAILABLE
UNIT B3	64	694	Q3 2022
UNIT B4	109	1,178	Q3 2022
WG1			LET



A4

FIRST FLOOR



B5 | B6

## SECOND FLOOR

**B5 608 SQ FT** **B6 1,080 SQ FT**

- Space for 6 desks

	SQ M	SQ FT	
UNIT A5			LET
UNIT A6			LET
<b>UNIT B5</b>	<b>56</b>	<b>608</b>	<b>AVAILABLE</b>
<b>UNIT B6</b>	<b>100</b>	<b>1,080</b>	<b>Q4 2022</b>
WG2			LET

B5

SECOND FLOOR



# BUSTLING BERMONDSEY. A THRIVING AREA.

H  
Y



# AMENITIES

## Restaurants & Bars

- 1 Constanca
- 2 Casse-Crouete
- 3 Electric Shuffle
- 4 José
- 5 Trivet
- 6 Bar Tozino
- 7 Flour & Grape
- 8 Locanda del Melo
- 9 Pique-Nique
- 10 Bermondsey Larder
- 11 Franco Manca
- 12 Nine Lives
- 13 The Last Talisman
- 14 The Bermondsey Yard

## Hotels

- 15 Hilton London Tower Bridge
- 16 Shangri-La Hotel at The Shard
- 17 The Dixon, Tower Bridge
- 18 Cheval Three Quays
- 19 The Lalit London
- 20 London Bridge Hotel

## Cafés

- 21 WatchHouse Bermondsey
- 22 Café Murano
- 23 Sharman Coffee Shop
- 24 Long Lane Café
- 25 Canela Espresso Bar

## Gyms

- 26 Third Space Tower Bridge
- 27 The Circle Gym & Spa

## Markets

- 28 Borough Market
- 29 Maltby Street Market
- 30 Vinegar Yard

## Green Spaces & Culture

- 31 Tanner Street Park & Tennis Courts
- 32 Leathermarket Gardens
- 33 White Cube Gallery

# CONNECTIVITY

Journey times from London Bridge Station\*



**BANK**  
1 min - Northern Line



**WATERLOO**  
3 mins - Jubilee Line



**CANARY WHARF**  
7 mins - Jubilee Line



**GREEN PARK**  
7 mins - Jubilee Line

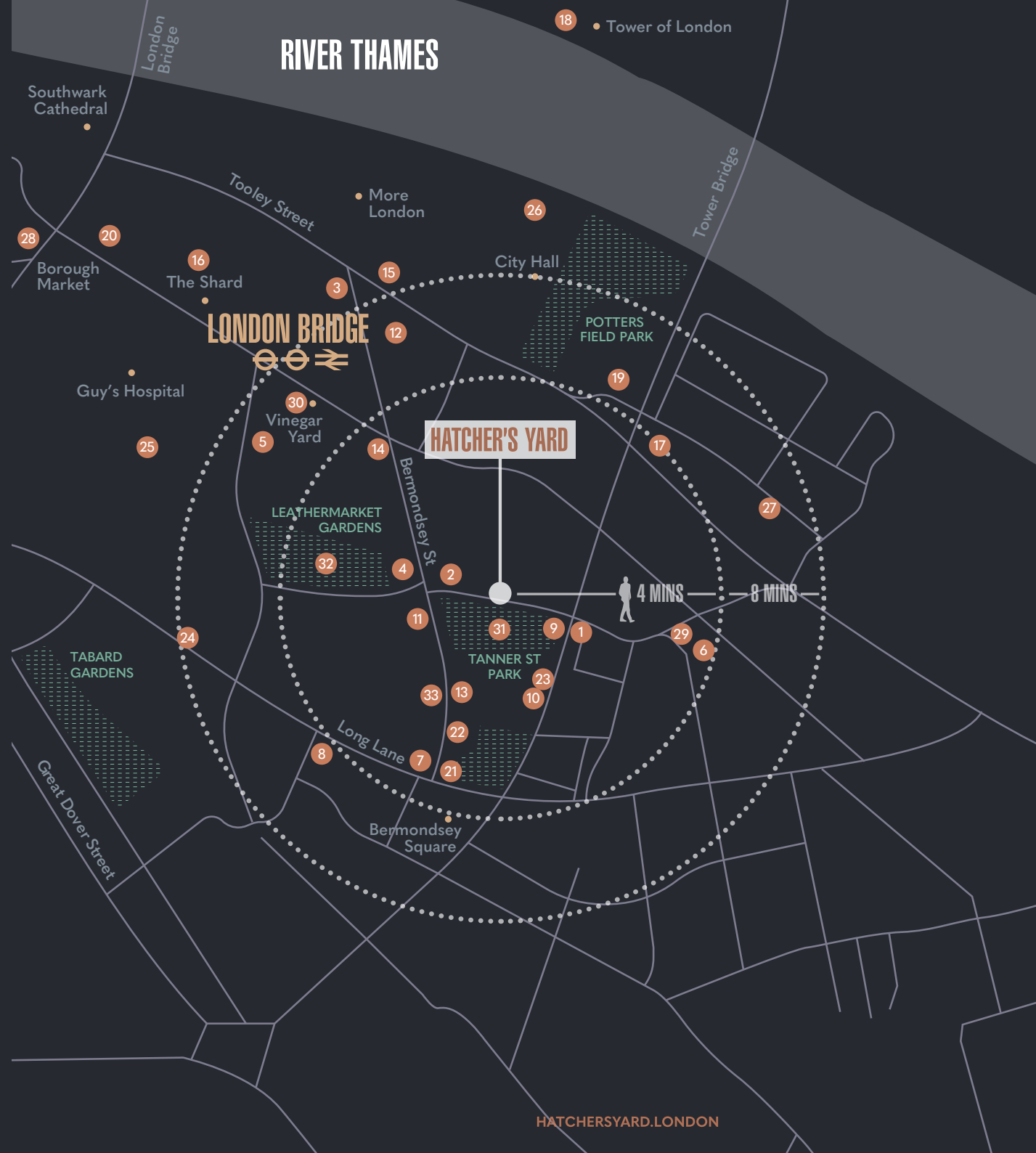


**FARRINGDON**  
10 mins - Thameslink  
Elizabeth Line



**KING'S CROSS  
ST PANCRAS**  
11 mins - Northern Line

\*Source crossrail.co.uk



# OUT AND ABOUT

Located close to the City and Central London, Bermondsey Street is a truly unique area – a place that’s buzzing with creativity and energy. From mouth-watering street food to elegant cuisine, the eateries and bars close by really are a temptation to spoil.

Borough Market never disappoints with its vast array of eclectic food and drinks, fashion and antiques. Within a short walk you can enjoy art galleries, green spaces and breath-taking views of the Thames.



**THE SOUTHBANK:  
A HIVE OF  
CREATIVITY AND  
INSPIRATION**

01

**Cafe Murano**  
An open kitchen serving classic & modern cuisine.

02

**José**  
A true taste of Spain on the corner of Bermondsey street.

03

**Borough Market**  
One of the largest and oldest food markets in London.

04

**Vinegar Yard**  
An eclectic mix of drinks, food, flea market and art.



01



02



03



04

HATCHERSYARD.LONDON

# HATCHER'S YARD

TANNER STREET SE1



**SIMON SMITH**

07736 880 316

[ss@unionstreetpartners.co.uk](mailto:ss@unionstreetpartners.co.uk)

**LUKE AUSTERBERRY**

07921 406 291

[la@unionstreetpartners.co.uk](mailto:la@unionstreetpartners.co.uk)

**MAX HUMPHRIES**

07718 484 284

[mh@unionstreetpartners.co.uk](mailto:mh@unionstreetpartners.co.uk)

**Colliers**  
INTERNATIONAL

**MARK RADFORD**

07730 318 148

[mark.radford@colliers.com](mailto:mark.radford@colliers.com)

**JACK KNIVETT**

07730 762 857

[jack.knivett@colliers.com](mailto:jack.knivett@colliers.com)

**CHARLIE COLLINS**

07759 121 247

[charlie.collins@colliers.com](mailto:charlie.collins@colliers.com)

Important Notice: Union Street Partners, Colliers and their clients give notice that: 1. They are not authorised to make or give any representations or warranties in relation to the property either here or elsewhere, either on their own behalf or on behalf of their client or otherwise. They assume no responsibility for any statement that may be made in these particulars. These particulars do not form part of any offer or contract and must not be relied upon as statements or representations of fact. 2. Any areas, measurements or distances are approximate. The text, photographs and plans are for guidance only and are not necessarily comprehensive. It should not be assumed that the property has all necessary planning, building regulation or other consents and Union Street Partners have tested any services, equipment or facilities. Purchasers must satisfy themselves by inspection or otherwise. Based on Ordnance Survey.

Not to scale - for identification purposes only. May 2022.

*fetchagency.com*