

GOLFVIEW CENTER

6690 Mission Gorge Rd, San Diego, CA 92120



Prime Retail/Office Space in Central San Diego

STEVEN GOODWIN

Steven@PacificCoastCommercial.com
(619) 317-2808
Lic. 02225070

TOMMAS GOLIA

Tommas@PacificCoastCommercial.com
(858) 598-2891
Lic. 01890744



Property Overview

2

PROPERTY FEATURES

- Address:** 6690 Mission Gorge Road, San Diego, CA 92120
Golfview Center
- Availability:** Suite J: ± 840 SF
- Lease Rate:** Contact Agent
- Building Size:** ± 20,232 SF Retail Strip Center
- # Suites:** Fifteen (15)
- Parking:** Onsite Parking

PLEASE DO NOT DISTURB TENANTS

PROPERTY HIGHLIGHTS



visibility

439' Frontage on Mission Gorge Road with 2 Curb Cuts Monument and Building Signage (27,390 VPD)



accessibility

Multiple Access Points to I-8 & I-15 Freeways
Public Transportation Nearby



location

Centrally Located in the Heart of San Diego County with View of Admiral Baker Golf Course. Surrounded by Numerous Restaurants, Retail, Healthcare Facilities, Universities and Business Service Providers



Golfview Center

Located in Grantville neighborhood, set in Mission Valley. Golfview Center is directly parallel to Admiral Baker Golf Course, which offers 2 - 18-hole courses. There is an abundance of craft breweries and outdoor shopping plazas with big-box stores and chain restaurants throughout the neighborhood. Just minutes away from the San Diego International Airport and within easy reach of all that San Diego has to offer, Golfview Center is a great place to grow your business. Conveniently located in the center of San Diego county, the area is within a 15 minute drive of the San Diego Zoo, SeaWorld San Diego and Downtown Gaslamp District and offers a wealth of affordable accommodations, family friendly dining options and great shopping at both the Fashion Valley and Mission Valley malls.





SUITE J
± 840 SF

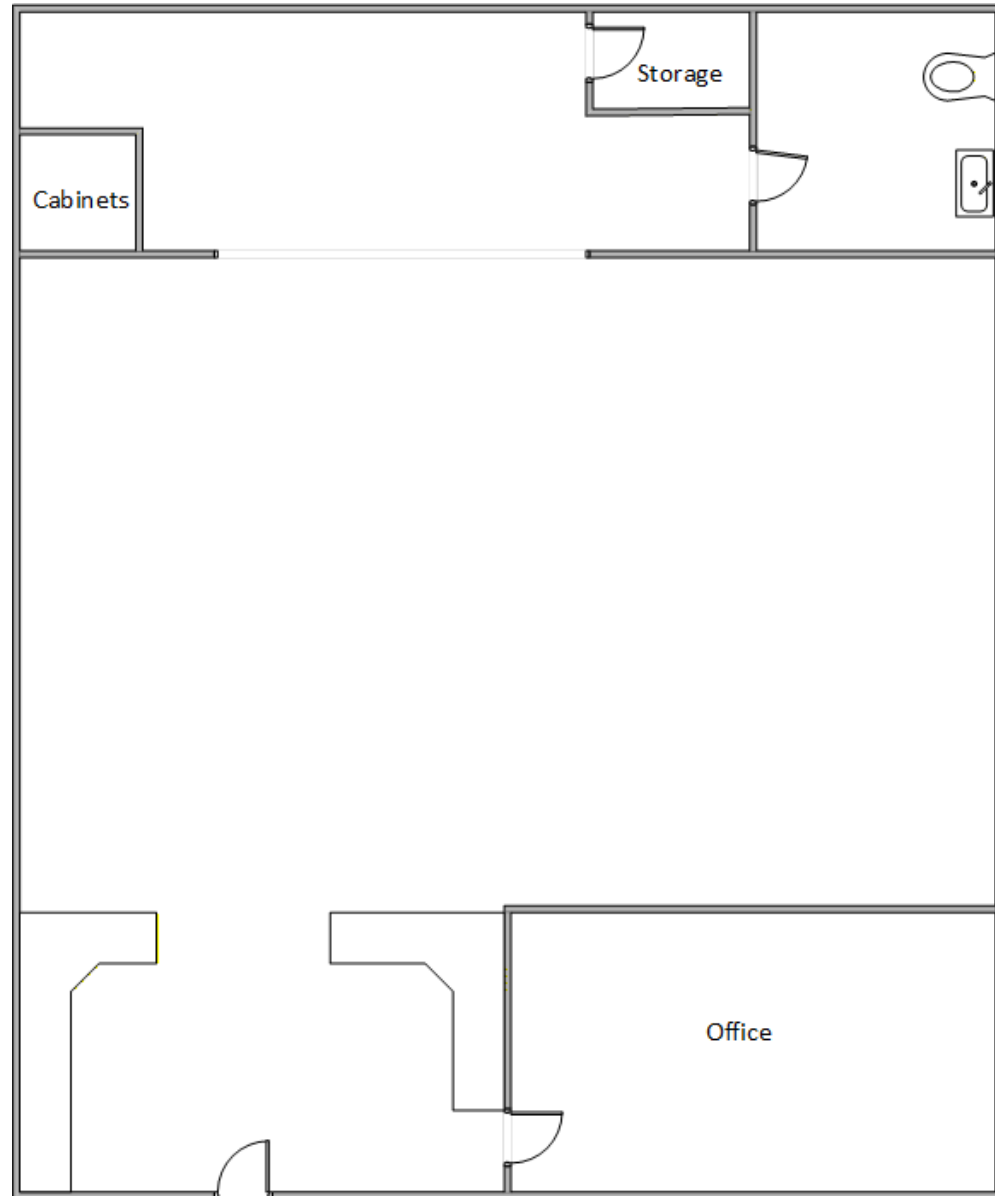
MISSION GORGE RD | 27,390 VPD

SUITE J

± 840 SF Retail/Office Suite
Lease Rate: Contact Broker
Do Not Disturb Tenant
Available June 2026



SUITE J



Property Photos

6

6690 Mission Gorge Road



Interior Photos

7

6690 Mission Gorge Road



Surrounding Amenities

8

Grantville Community is Centrally Located to San Diego Making it Very Desirable for Residential Developers

2,089 residential units newly completed or under construction

3,009 units proposed or developer purchased land

5,098 total units

6690 Mission Gorge Road



1 Mile to
On/Off Ramp



Future SDSU
West Development

KEARNY MESA

TIERRASANTA

Future 996 Apartment
Development by G.H. Palmer

**GOLFVIEW
CENTER**



MISSION GORGE RD

RAINIER AVE

FRIARS RD

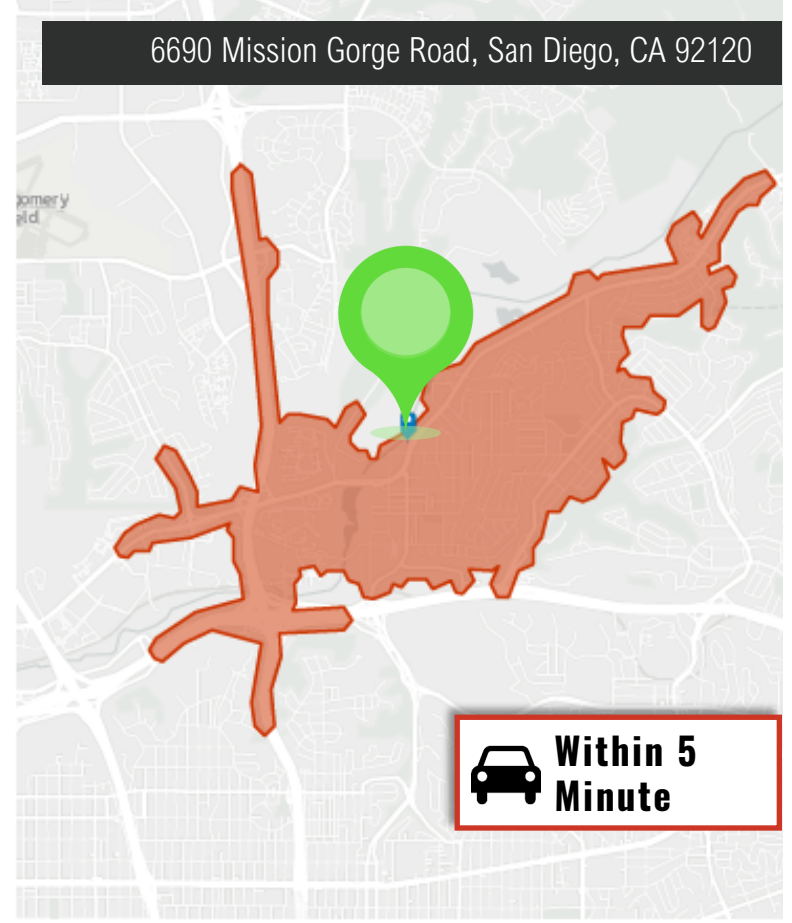
MISSION GORGE RD



9

6690 Mission Gorge Road

	1 Mile	3 Mile	5 Mile
POPULATION	18,262	167,205	449,291
HOUSEHOLDS	8,046	65,357	182,028
CONSUMER SPENDING	\$263.8M	\$2.3B	\$6.1B
MEDIAN AGE	36.2	36	37.5
AVG HH INCOME	\$120,841	\$126,307	\$119,485
EMPLOYEES	14,775	103,898	268,745
BUSINESSES	2,180	13,729	36,494
MEDIAN HOME VALUE	\$701,956	\$872,293	\$810,126



Drive Times



9 MIN
SDSU



10 MIN
Mission Valley



12 MIN
Kearny Mesa



16 MIN
San Diego Intl. Airport



30 MIN
U.S. - Mexico Border

GOLFVIEW CENTER

6690 Mission Gorge Rd, San Diego, CA 92120

STEVEN GOODWIN

Steven@PacificCommercial.com
(619) 317-2808
Lic. 02225070

TOMMAS GOLIA

Tommas@PacificCoastCommercial.com
(858) 598-2891
Lic. 01890744

OFFICE (619) 469-3600 | 10721 Trenea St., Suite 200, San Diego, CA 92131 | www.PacificCoastCommercial.com | Lic. 01209930



The information contained herein has been given to us by the owner of the property or other sources we deem reliable, we have no reason to doubt its accuracy, but we do not guarantee it. All information should be verified prior to purchase or lease.