

±2,668 SF OFFICE SPACE AVAILABLE FOR LEASE
1932 KELLOGG AVENUE, CARLSBAD, CA92008



CONNOR USSELMAN
SENIOR ASSOCIATE
LICENSE #02127620
858.926.6671
CUSSELMAN@VOITCO.COM

TODD HOLLEY, SIOR
SENIOR VICE PRESIDENT - PARTNER
LICENSE #00998326
619.665.5202
THOLLEY@VOITCO.COM

Voit
REAL ESTATE SERVICES

PROPERTY SPECIFICATIONS



2nd Story Office

±2,668 SF



Lot Size

±0.42 AC



Parking

159/1,000 SF



Year Built

1998



Zoning

Planned Industrial (P-M)



Improvements

New creative, exterior paint & landscape



Entrance

Separated Entrances



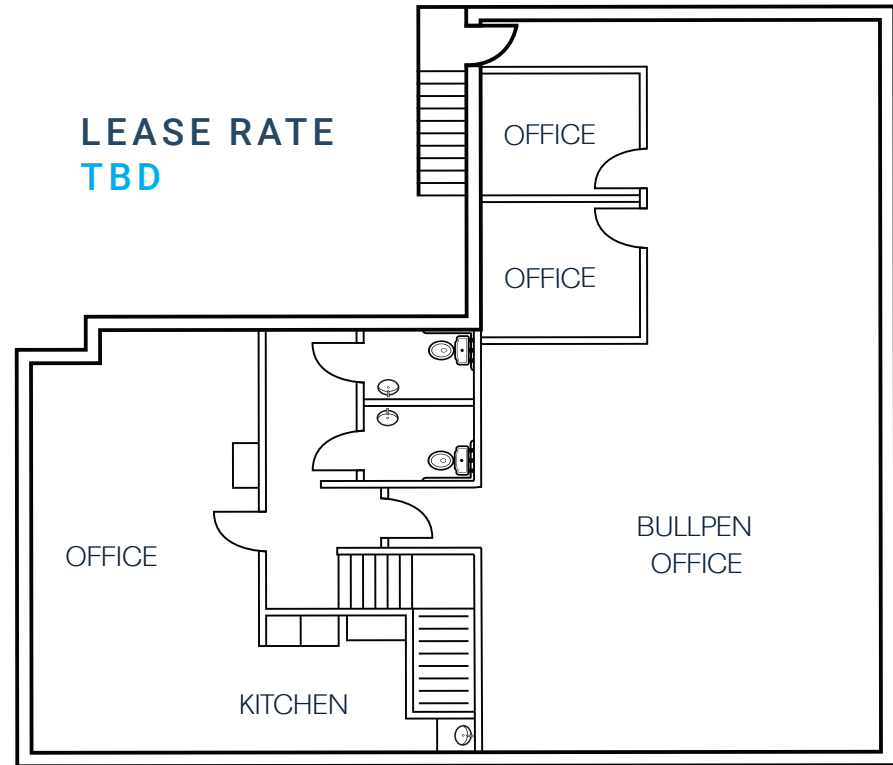
Neighbors

Palomar Airport



Easy Access

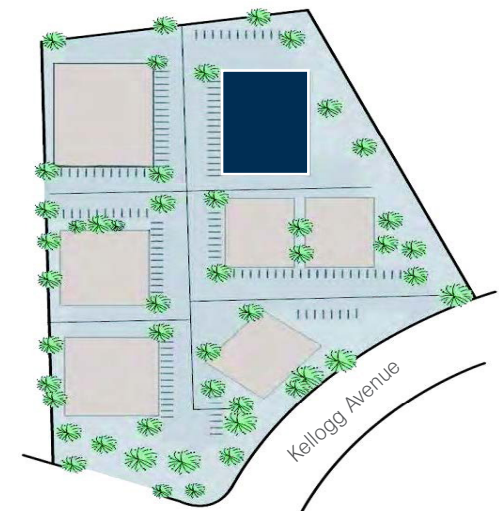
I-5 and El Camino Real

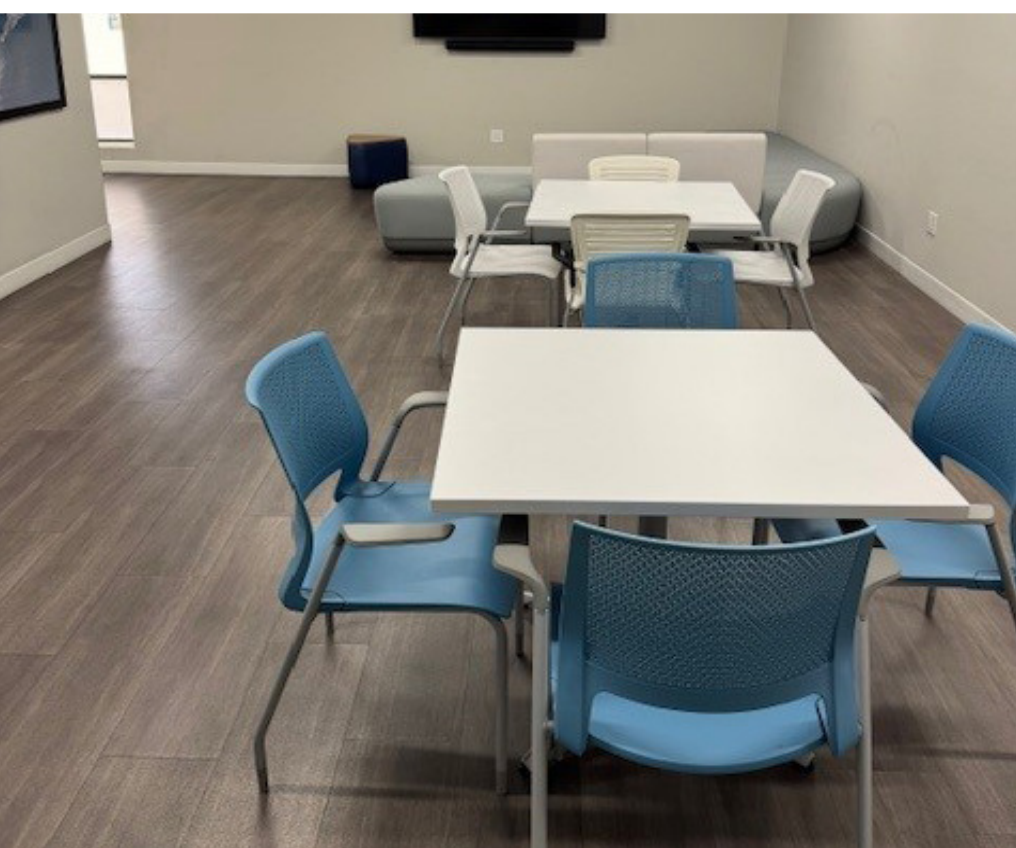


LEASE RATE
TBD

2ND-STORY OFFICE

- » LARGE BULLPEN OFFICE
- » 2 PRIVATE OFFICES
- » KITCHEN
- » RESTROOMS







CONNOR USSELMAN
 SENIOR ASSOCIATE
 LICENSE #02127620
 858.926.6671
 CUSSELMAN@VOITCO.COM

TODD HOLLEY, SIOR
 SENIOR VICE PRESIDENT - PARTNER
 LICENSE #00998326
 619.665.5202
 THOLLEY@VOITCO.COM

Voit
 REAL ESTATE SERVICES

4180 La Jolla Village Drive, Suite 100, La Jolla, CA 92037 · 858.453.0505 · Lic #01991785 | www.voitco.com

Licensed as Real Estate Salespersons by the DRE. The information contained herein has been obtained from sources we deem reliable. While we have no reason to doubt its accuracy, we do not guarantee it. ©2026 Voit Real Estate Services, Inc.