

PREPARED FOR:  
MPT Property MGT  
5901 Christie Ave. # PL3  
Emeryville, CA 94608  
Tel (415) 626-9292  
Fax (415) 376-1000

**5901 CHRISTIE AVE.  
EMERYVILLE, CA**

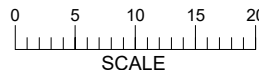
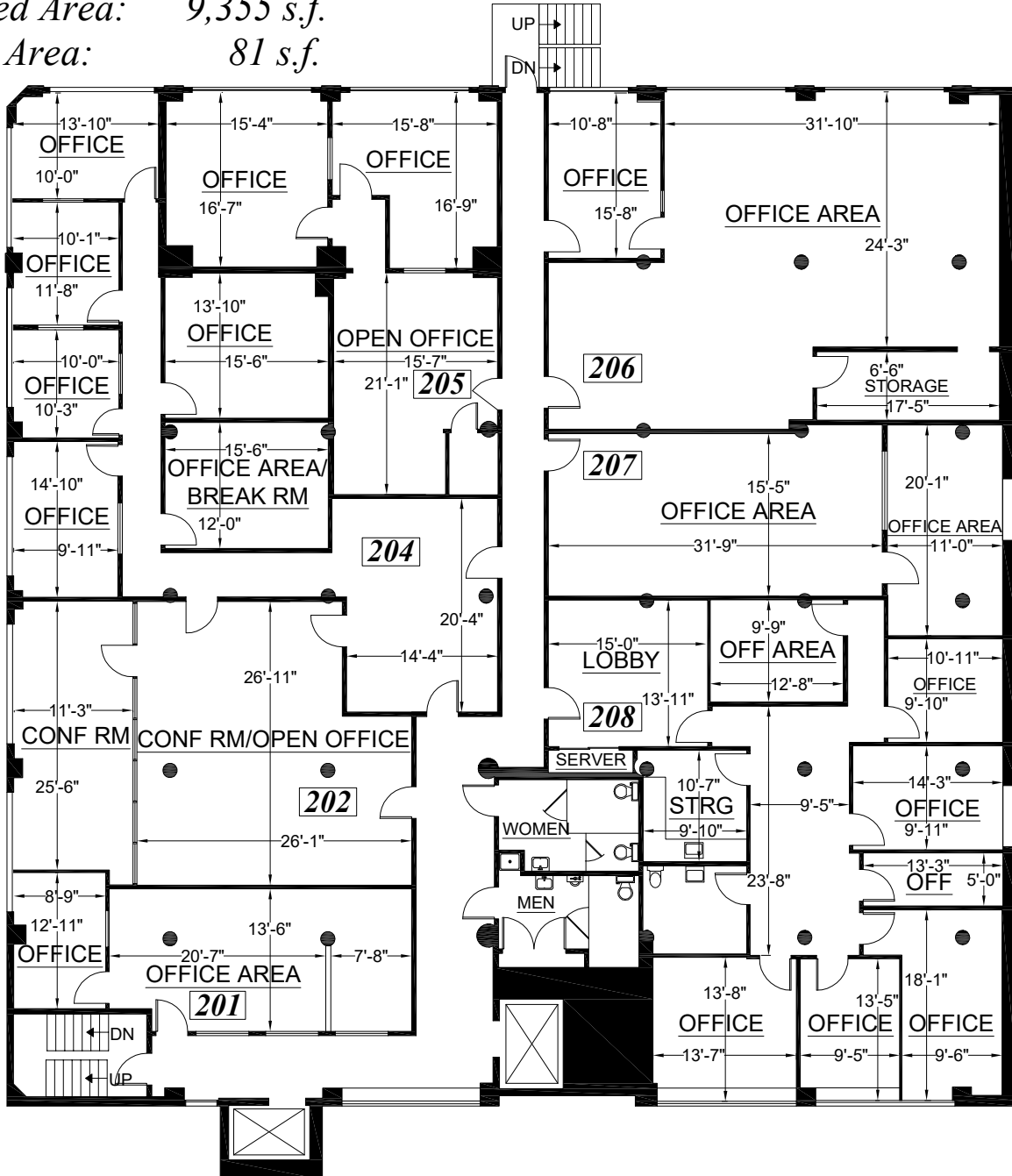
**SECOND FLOOR**

(As Measured: March 2002)  
(Last Updated: June 2019)

<http://www.mptproperty.com>

**FLOOR PLAN**

*\*Measured Area: 9,355 s.f.  
Exterior Area: 81 s.f.*



**Note:** All dimensions shown are rounded to the nearest inch, for informational purposes only. All measurements are recorded to 1/8" accuracy as documented in the final CAD drawing supplied.



TEL: (888) 393-6655  
FILE: 19-271 (13-050)