



# MONROE PARK TOWER

101 NORTH MONROE STREET



James L. Nystrom, SIOR

+1 850 224 2300 | [nystrom@talcor.com](mailto:nystrom@talcor.com)

# MONROE PARK TOWER

## PROPERTY

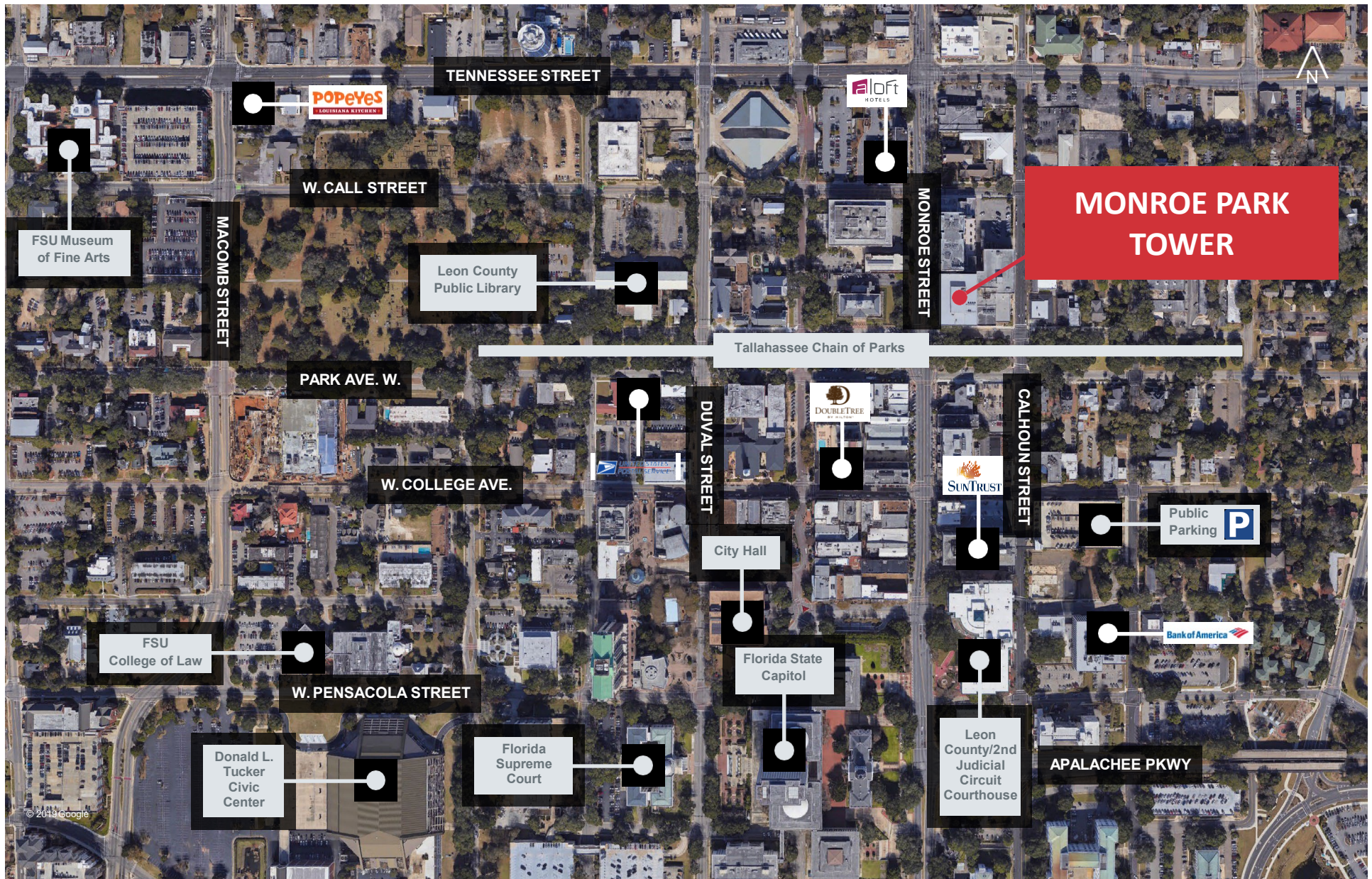
- Downtown Ten story, 111,977 SF Class A Office Building with floor-to-ceiling windows
- Covered & secured six level parking garage (3 per 1,000 ratio) with direct elevator access to suites and an on-site branch bank
- Walking distance to restaurants, banking, shopping & hotels. Near the Capitol, Federal & County Courthouses & City Hall & only 2 blocks from Monroe St. & Tennessee St. intersection, easy access to Hwy. 27, Hwy. 90 & I-10

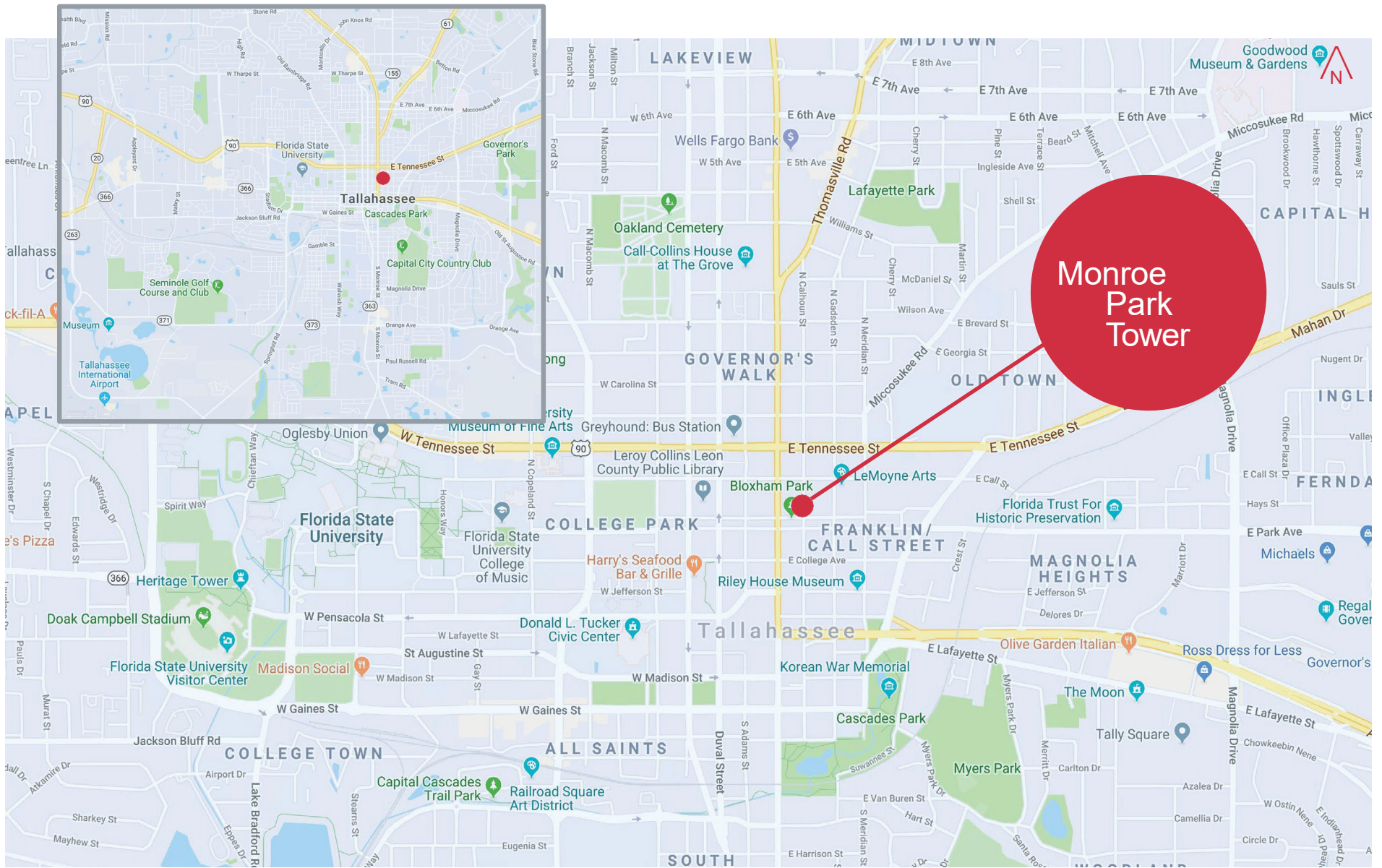
## TALLAHASSEE INFORMATION

Tallahassee is known as Florida's Capital City and Downtown Tallahassee is the political epicenter drawing in visitors from around the state and nation to visit the Capitol. In addition, the city is known for its college population from Florida State University (42,000 student enrollment), Tallahassee Community College (18,000 students), and Florida A&M University (9,000 student enrollment). The heart of the Capital City is Downtown Tallahassee. Downtown Tallahassee is known for its beautiful parks, boutique hotels, unique and exciting dining, museums, arts, music and natural resources. So regardless of what brought you here, being here will guarantee you an experience vibrant with entertainment, culture and delight.



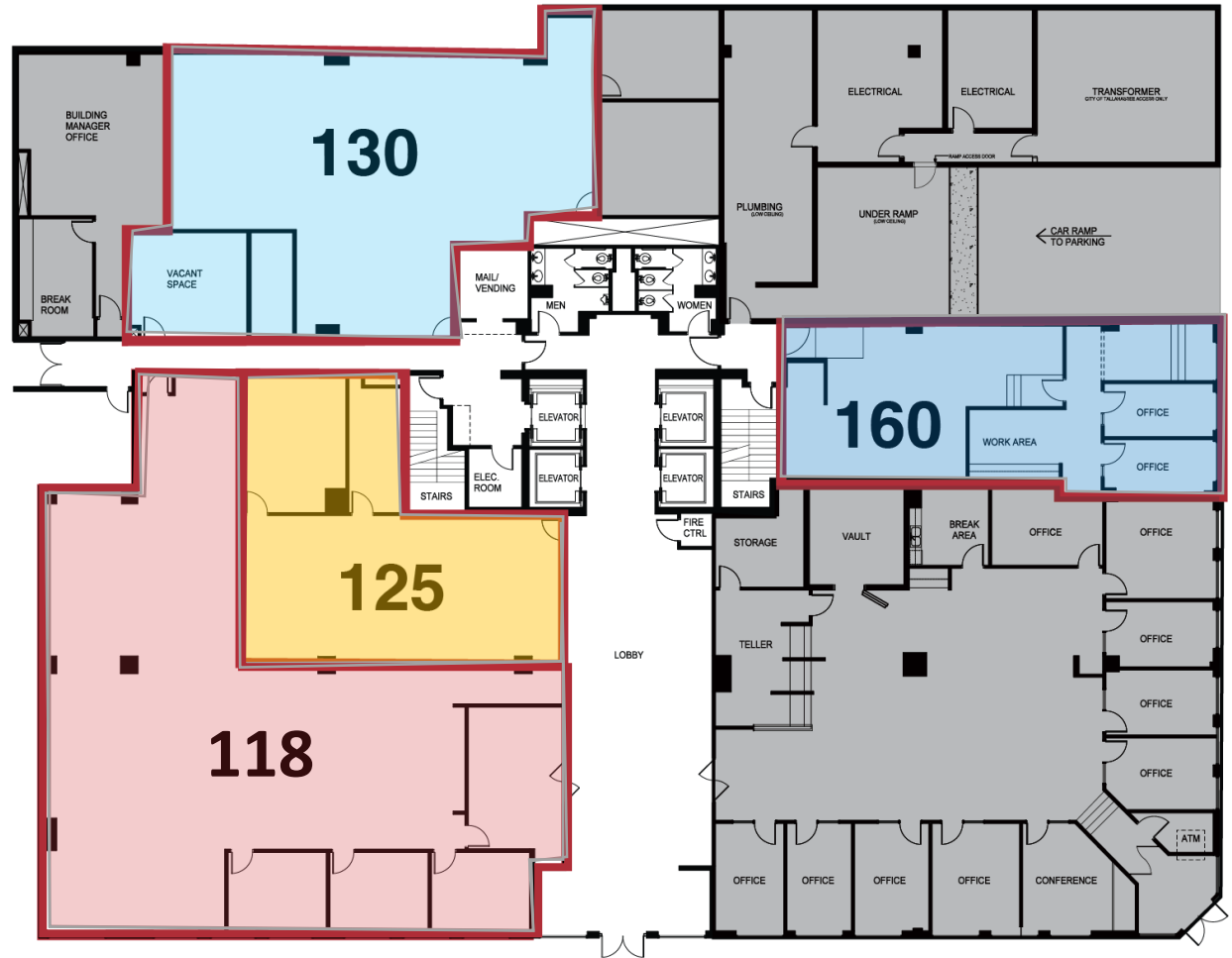






# FIRST FLOOR

SUITE #	SQ FT
118	4,100
125	1,617
130	3,409
160	1,670



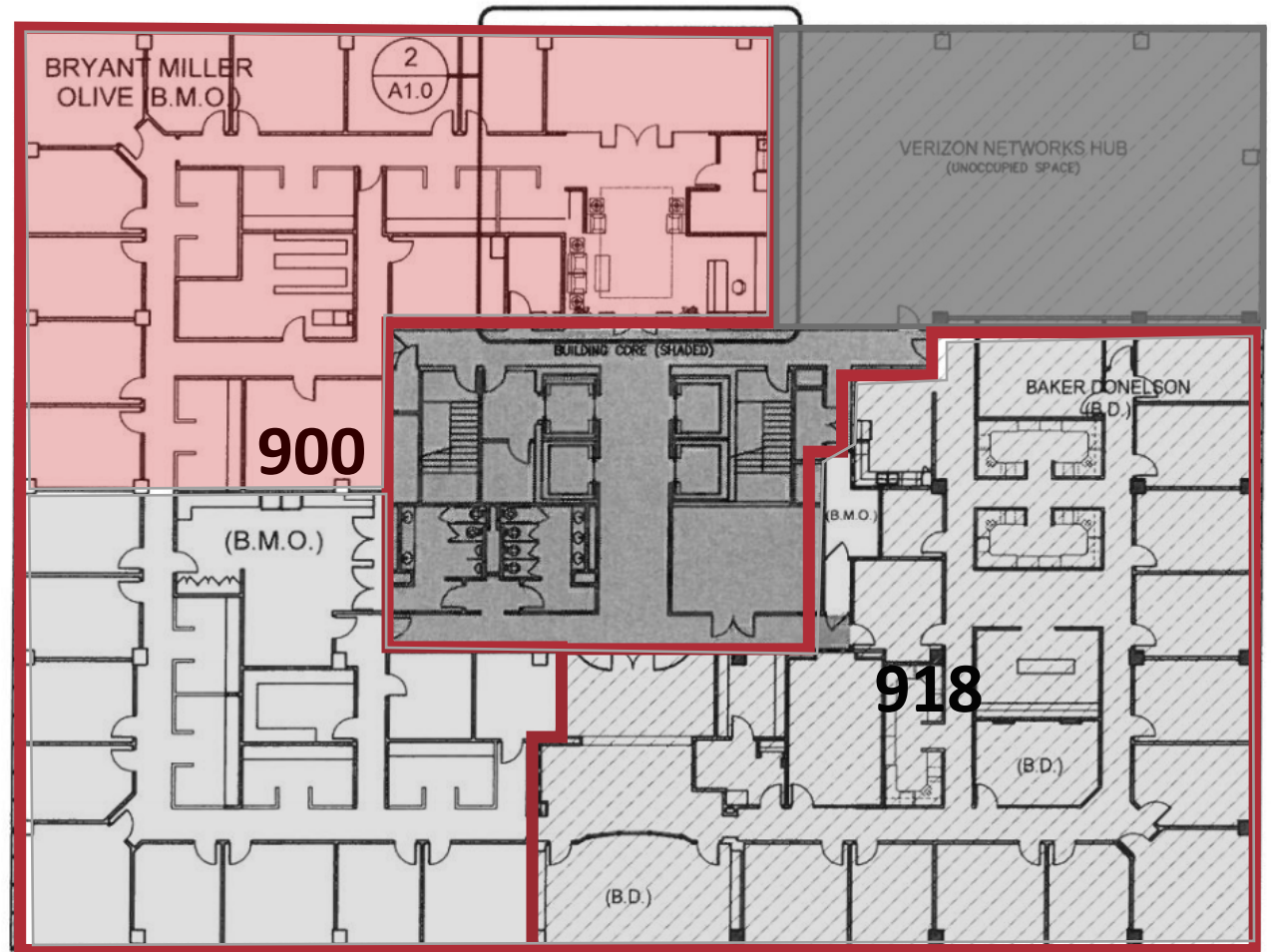
# SEVENTH FLOOR

SUITE #	SQ FT
700	8,151
715	2,745
750	3,874



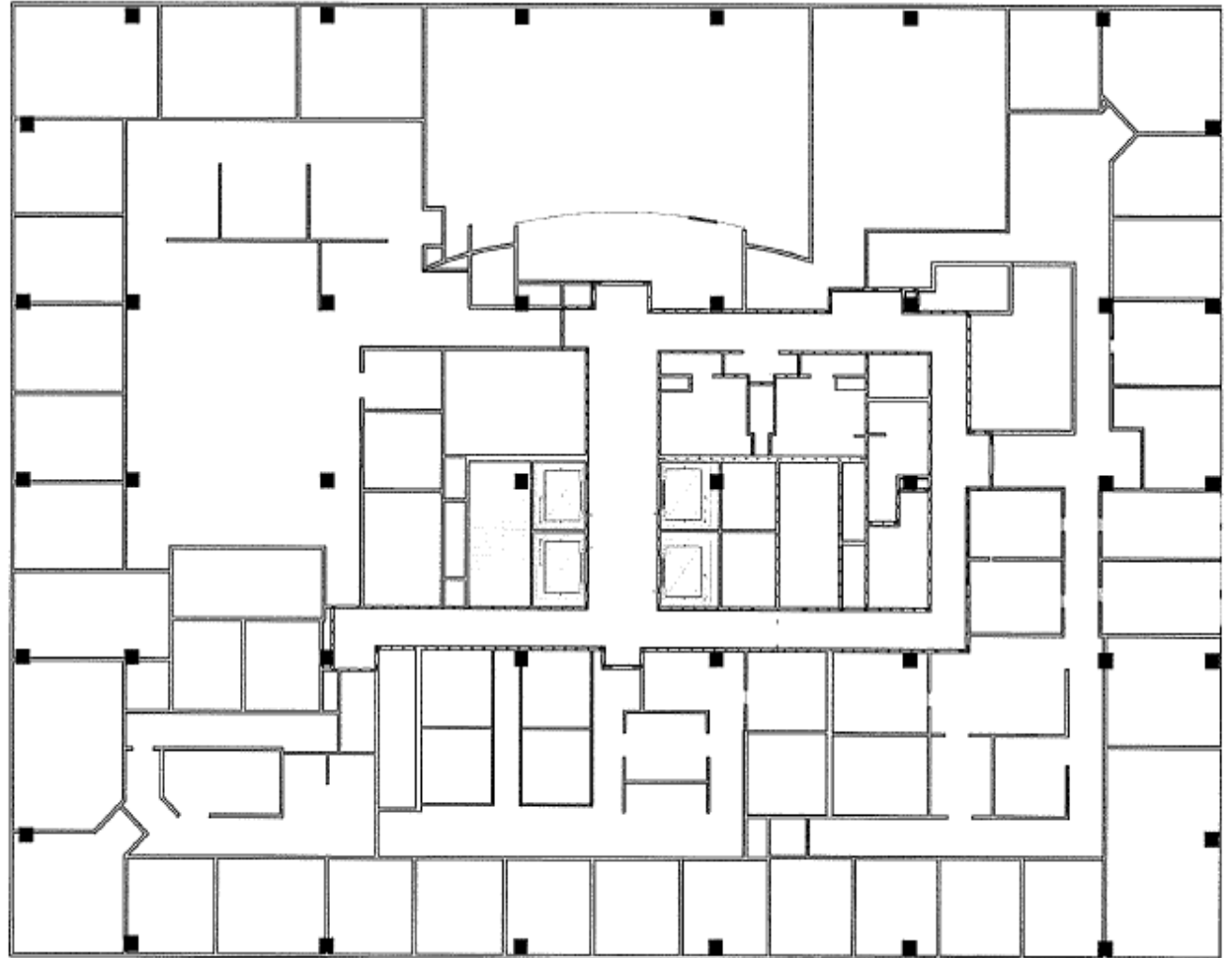
# NINTH FLOOR

SUITE #	SQ FT
900	6,887



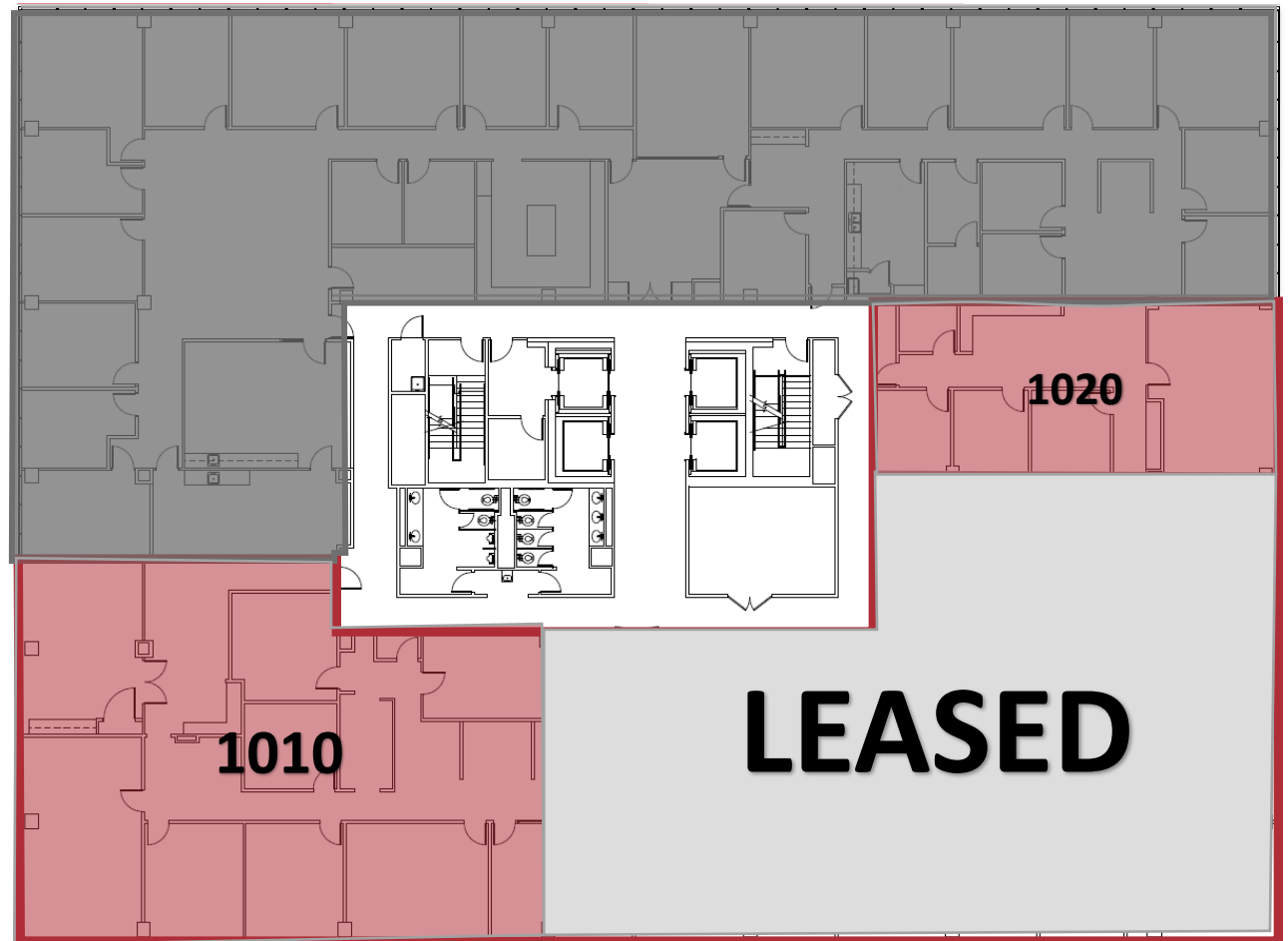
# EIGHTH FLOOR

SUITE #	SQ FT
800	24,000



# TENTH FLOOR

SUITE #	SQ FT
1010	4,500
1020	1,500





The NAI logo is displayed in white, bold, sans-serif font on a red, triangular background element that points towards the top right corner of the page.The NAI TALCOR logo features the letters 'NAI' in a large, bold, black font, with a red diagonal line through the 'A'. To the right, the word 'TALCOR' is written in a smaller, bold, black font.

**James (Jimmy) L. Nystrom, SIOR**

Commercial Advisor

**NAI TALCOR**

o: 850.224.2300

f: 850.425.1114

c: 850.570.5837

[nystom@talcor.com](mailto:nystom@talcor.com)

**NAI TALCOR**

1018 Thomasville Road, Suite 200A

Tallahassee, Florida 32303

+1 850 224 2300

**TALCOR.COM**

©2018 NAI TALCOR

The contents of this proposal are intended for the individuals to whom it is presented or delivered and their company associates. Any dissemination or replication, without the express authorization of NAI TALCOR, is strictly prohibited.