

±1,016 SF OFFICE SUITE FOR SUBLEASE

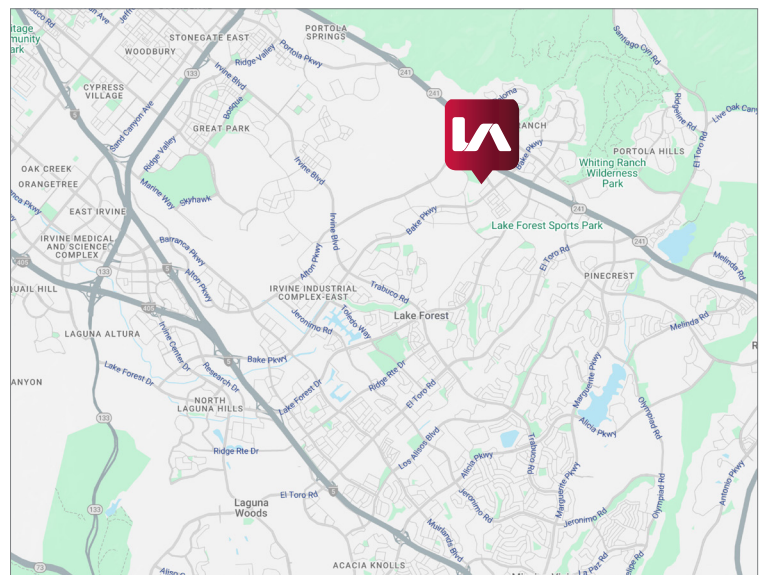
1 ORCHARD ROAD, SUITE 210

LAKE FOREST, CA 92630



LISTING DATA

- ±1,016 SF Office Suite Available
- 2 Private Offices, Kitchenette, and Open Area
- Part of a Professionally Managed Business Park
- Close Proximity to the Foothill Ranch Towne Centre with Numerous Retail Amenities
- Easy Access to the 241 Toll Road
- Sublease Through December 31, 2026 (Longer Term Possible)



Mark Jerue
Senior Vice President
Lic. #01073399
949.790.3121
mjerue@leeirvine.com

Craig Fitterer
Senior Vice President
Lic. #01246929
949.790.3123
cfitterer@leeirvine.com

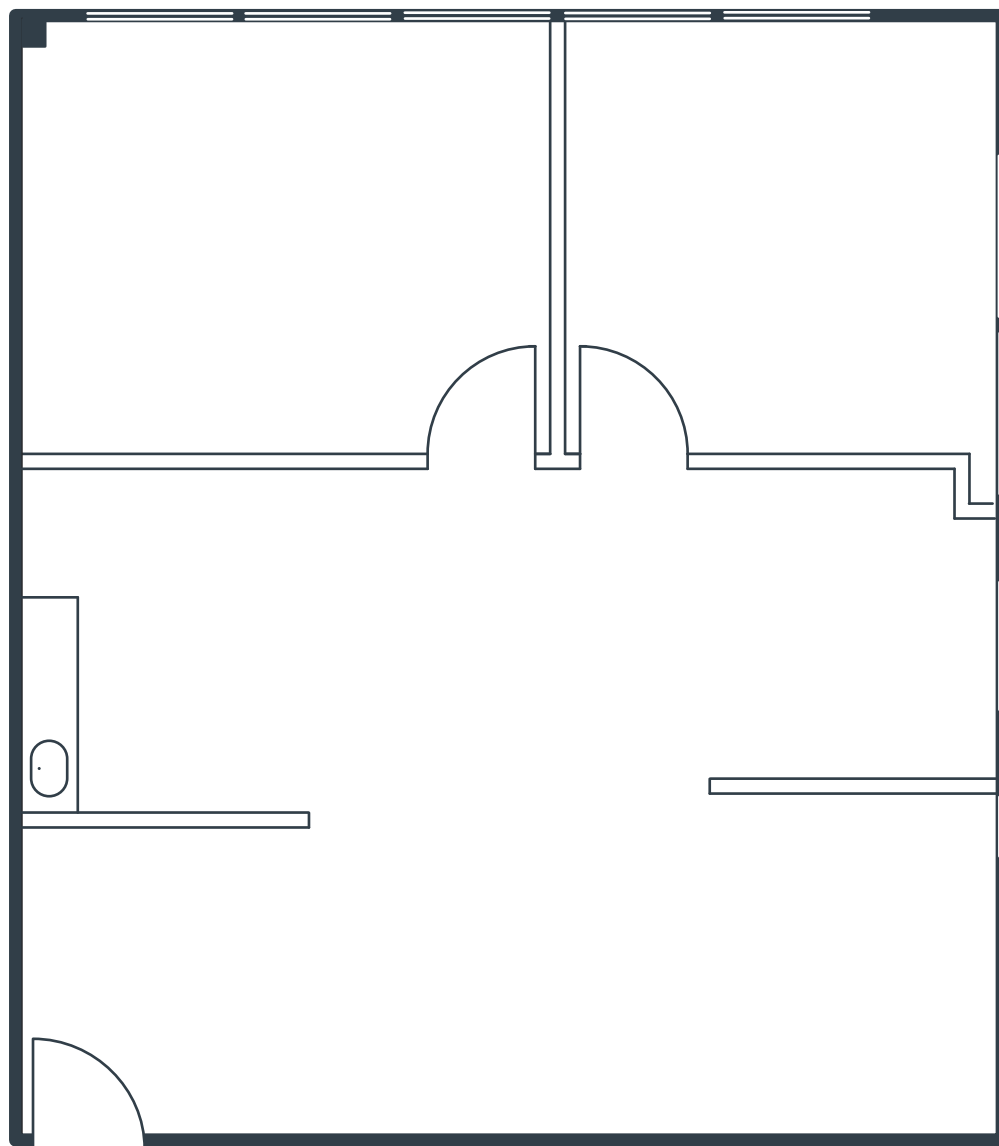
BJ Fell
Senior Vice President
Lic. #01929179
949.790.3144
bfell@leeirvine.com

GianCarlo Spinosi
Associate
Lic. #02065254
949.790.3109
gspinosi@leeirvine.com

All information furnished regarding property for sale, rental or financing is from sources deemed reliable, but no warranty or representation is made to the accuracy thereof and same is submitted to errors, omissions, change of price, rental or other conditions prior to sale, lease or financing or withdrawal without notice. No liability of any kind is to be imposed on the broker herein.

±1,016 SF OFFICE SUITE FOR SUBLEASE
1 ORCHARD ROAD, SUITE 210
LAKE FOREST, CA 92630

FLOOR PLAN



Mark Jerue
Senior Vice President
Lic. #01073399
949.790.3121
mjerue@leeirvine.com

Craig Fitterer
Senior Vice President
Lic. #01246929
949.790.3123
cfitterer@leeirvine.com

BJ Fell
Senior Vice President
Lic. #01929179
949.790.3144
bfell@leeirvine.com

GianCarlo Spinosi
Associate
Lic. #02065254
949.790.3109
gspinosi@leeirvine.com

All information furnished regarding property for sale, rental or financing is from sources deemed reliable, but no warranty or representation is made to the accuracy thereof and same is submitted to errors, omissions, change of price, rental or other conditions prior to sale, lease or financing or withdrawal without notice. No liability of any kind is to be imposed on the broker herein.