

FIFTY-FIVE THOMSON PLACE



First & fifth floors available

Floor 1: 7,324 SF - Available Immediately

Floor 5: 10,504 SF (full floor) - Available 4/1/26

**AVISON
YOUNG**

Building highlights



Brick & beam



New lobby



On-site parking



Proximity to MBTA



Security



Locker room & showers



Upgraded HVAC system

View from the space



In the neighborhood



DISTRICT HALL
A program of the Venture Café Foundation |

MOOO...
SEAPORT

MENTON



MECHA

trillium
BREWING COMPANY

flour
bakery + cafe

YOTEL

ROW 34

TRADER JOE'S



EATERY

DIG INN



CAFFÈ NERO

NOVOY

BOQUERIA
BAR DE TAPAS | RESTAURANTE

5i
FIVE IRON GOLF

pure barre
lift • tone • burn

OCEAN PRIME
SEAFOOD • STEAKS • COCKTAILS

SHAKE SHACK

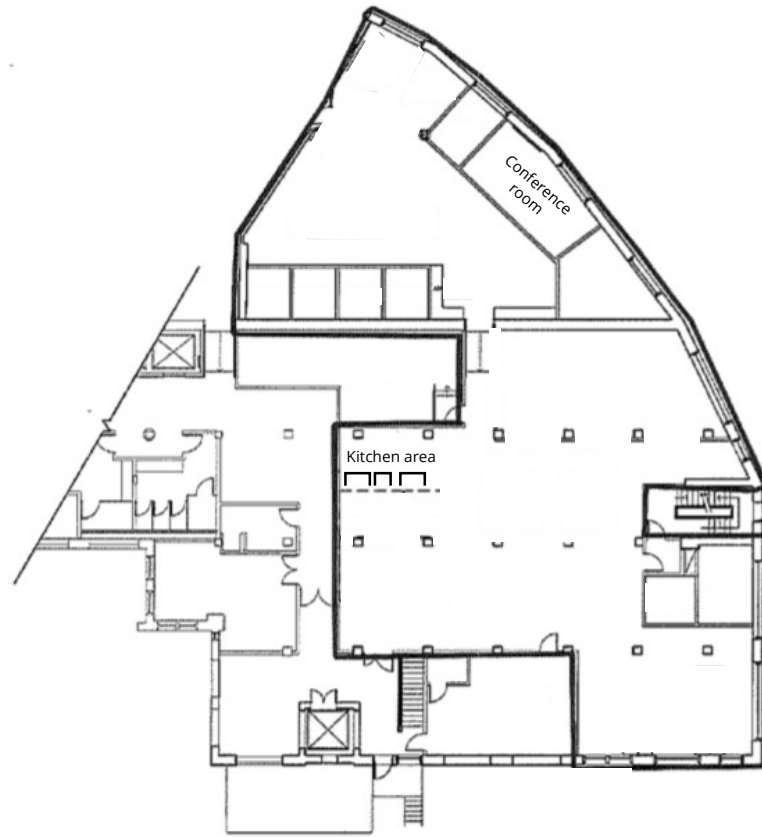
SAMUEL ADAMS



SPIN•BOSTON

1st floor plan

7,324 SF



THOMSON PLACE

CALVIN PLACE

SOUTH

NORTH



5th floor plan

10,504 SF
(full floor)

Space highlights



Open area for desks



Great views



High ceiling



Kitchen



Natural light

FIFTY-FIVE THOMSON PLACE

**For more information,
please contact:**

Justin Dziama, Principal
617.366.1004
justin.dziama@avisonyoung.com

200 State Street | Floor 15 | Boston, MA 02109

© 2025, Avison Young New England LLC. The information contained herein was obtained from sources which we deem reliable and, while thought to be correct, is not guaranteed by Avison Young and as such, cannot be warranted nor form any part of any future contract.

**AVISON
YOUNG**