

FOR SUBLEASE

10105 RESIDENCY ROAD

Manassas, VA



PROPERTY HIGHLIGHTS

- Zoned M1 - Heavy Industrial, Prince William County
- Office, Warehouse, and Yard Spaces Available
- 2 Drive-ins
- Abundant Parking
- Immediate Access to Routes 28 and 234

RATE:

Office and Warehouse: \$16/NNN
Operating Expenses: \$2.85/SF
Parking/Yard: \$6/SF

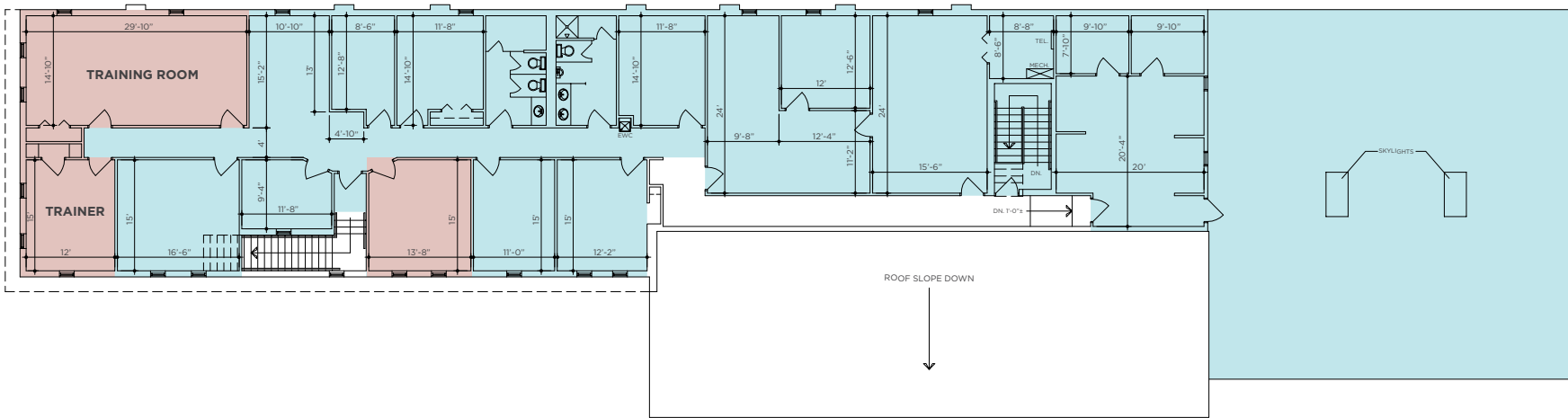
TERM:

Through September 30, 2030

BUILDING PLAN

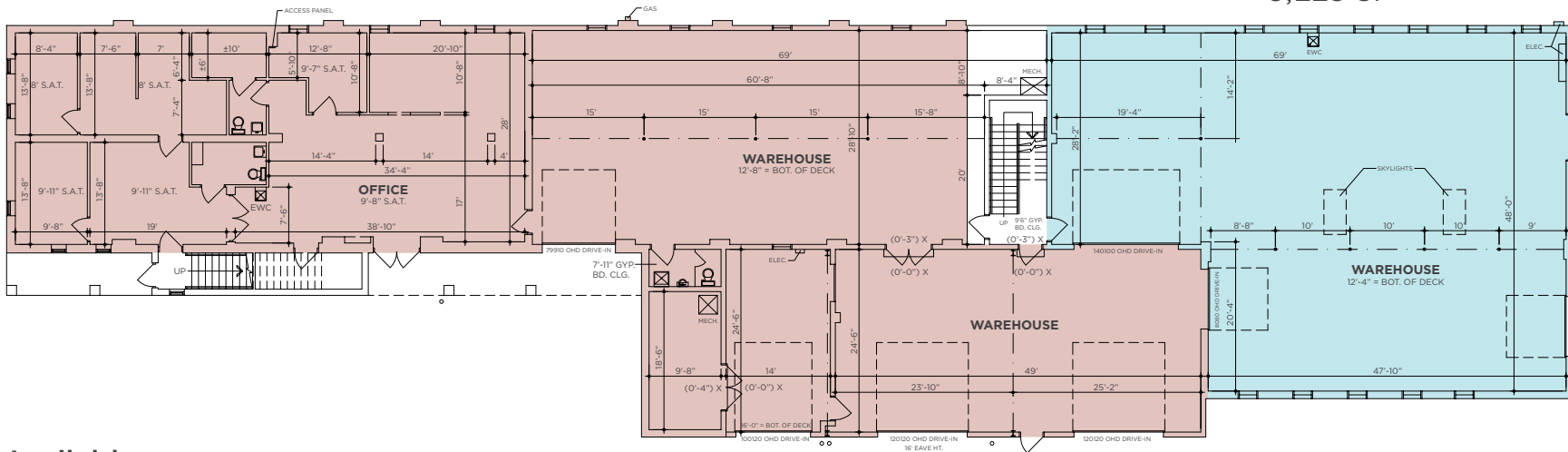
SECOND FLOOR OFFICE

6,839 SF



FIRST FLOOR WAREHOUSE

3,118 SF

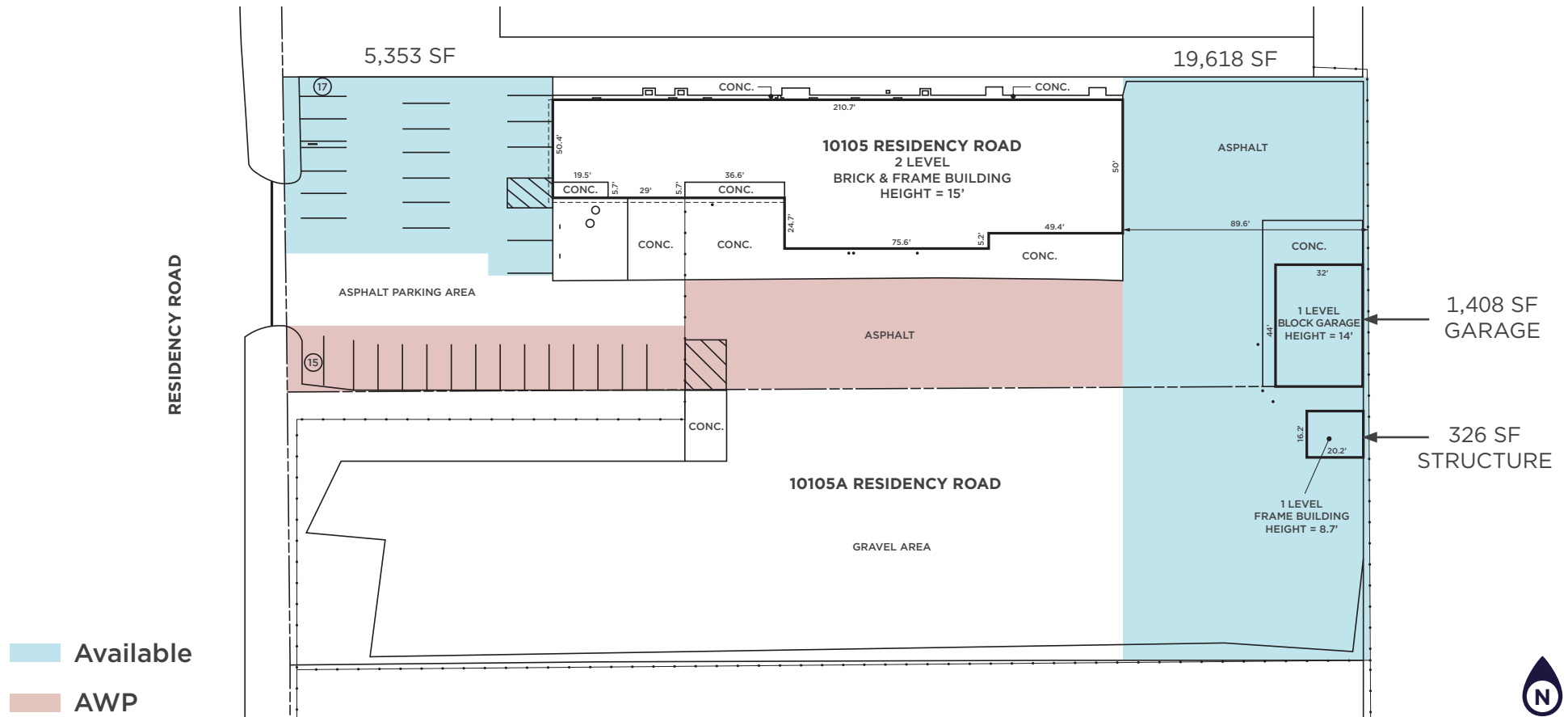


Available

AWP



YARD PLAN



ED ZAPTIN
Senior Director
703 407 1180
ed.zaptin@cushwake.com

SHANE KEETON
Brokerage Specialist
703 847 2730
shane.keeton@cushwake.com

1800 Tysons Blvd., Suite 200
Tyson's Corner, VA 22102
+1 703 448 1200
cushmanwakefield.com

