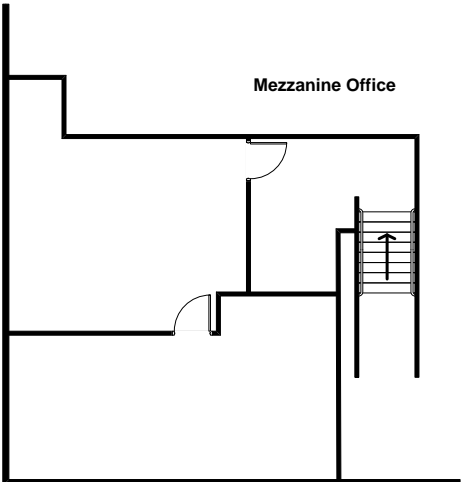
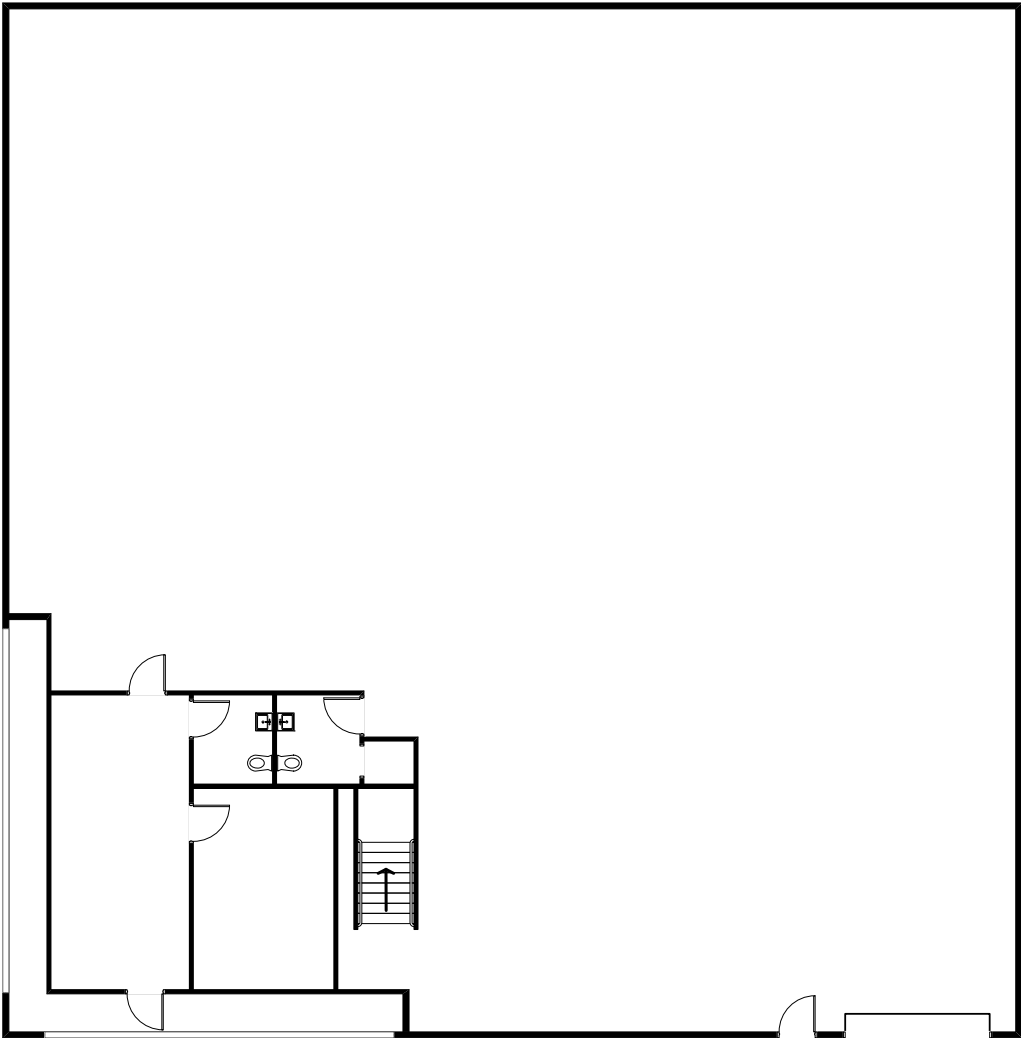


Site Plan

12010 Bloomfield Avenue
Santa Fe Springs, CA



Rendering Not to Scale

FOR MORE INFORMATION,
PLEASE CONTACT:

Sandy Gonzalez
Lic. # 01844956
562.469.5331

Peter Pistone, SIOR
Lic. # 01007013
213.418.9200



The information contained herein has been obtained from sources we deem reliable. While we have no reason to doubt its accuracy, interPres Commercial Realty makes no representation or warranties. All measurements are approximate and need to be independently verified by a prospective tenant prior to executing a binding contract.