

Shops at Palm Bay

St. Johns Heritage Pkwy & Emerson Drive, Palm Bay, FL 32907



CUSHMAN & WAKEFIELD



Unit/ Outparcel	SF/AC	Status	Tenant
1	2,200	Leased	Veterinarian
2	2,000	Leased	Dentist
3	3,000	Leased	Liquor Store
4	1,300 - 5,064	Available	
5	1,750	LOI	Drive-Thru Tea/Coffee
Outparcel			
1	1.01	LOI	QSR Restaurant
2	0.86	Lease Review	Automotive Retail

STATUS KEY: Available (Orange), Open (Light Blue), Signed Lease (Dark Blue)

LENNAR
DEVELOPMENT
4,000 Units

LENNAR
DEVELOPMENT
4,000 Units

A DEVELOPMENT BY: **Hunington**

Presented by

J. Jeffery Allman, Jr.

o: +1 772 678 7608

m: +1 772 283 1555

jeff.allman@cushwake.com

RETAIL FOR LEASE | OUTPARCELS FOR SALE/GROUND LEASE

Call for Pricing Guidance

Shops at Palm Bay

St. Johns Heritage Pkwy & Emerson Drive, Palm Bay, FL 32907

Property Details

- Address: St. Johns Heritage Parkway & Emerson Drive
- Pricing: Call for Pricing Guidance
- Space Size: 1,300 SF to +/- 5,064SF
0.86 Acre & 1.01 Acre Outparcels
(Ground Lease or Purchase)
- Frontage: +/- 300' on St. Johns Heritage Pkwy
+/- 500' on Emerson Drive
- Estimated Delivery: Q2 2027
- Access: St. Johns Heritage Pkwy & Emerson Dr
- AADT: 9,400 Emerson / 8,700 St Johns Heritage

Property Overview

- Located in Brevard County's largest city, Palm Bay, which is experiencing massive amounts of residential growth with over 14,000 new homes approved or under construction within 3-miles of this location.
- Nearby the major intersection of the St. Johns Heritage Parkway and Emerson Drive, which is the commercial component to Lennar's 4,000 home community, Everlands, which surrounds these parcels.
- The traffic signal here is fully funded and approved and is scheduled to be installed later this year.
- Directly north is the Platt Ranch that has approvals for 4,672 homes, approximately 500,000 SF of commercial and multiple schools with a 1,700 student capacity.
- The 4-laning of St. Johns Heritage Pkwy from Hwy 192 to Malabar Rd is scheduled to begin also later this year and the 4-laning of Emerson Drive has already commenced to the east of this site and shall continue to St. Johns Pkwy.
- The St. Johns Heritage Pkwy was constructed for residents living in this area of southwest Brevard County to easily access the surrounding areas and is the primary route for local residents heading to work which is primarily to the north.
- The St. Johns Heritage Pkwy is to be extended south from Malabar Rd ultimately connecting back into Interstate 95.
- Just over two miles to the south there is a new Publix anchored shopping center going in at the northwest corner of St. Johns Heritage Pkwy & Malabar Rd.
- With minimal commercial opportunities on the St. Johns Heritage Pkwy makes this the premiere commercial opportunity
- There are approximately 2,500 students in this area with 1,700 additional planned.



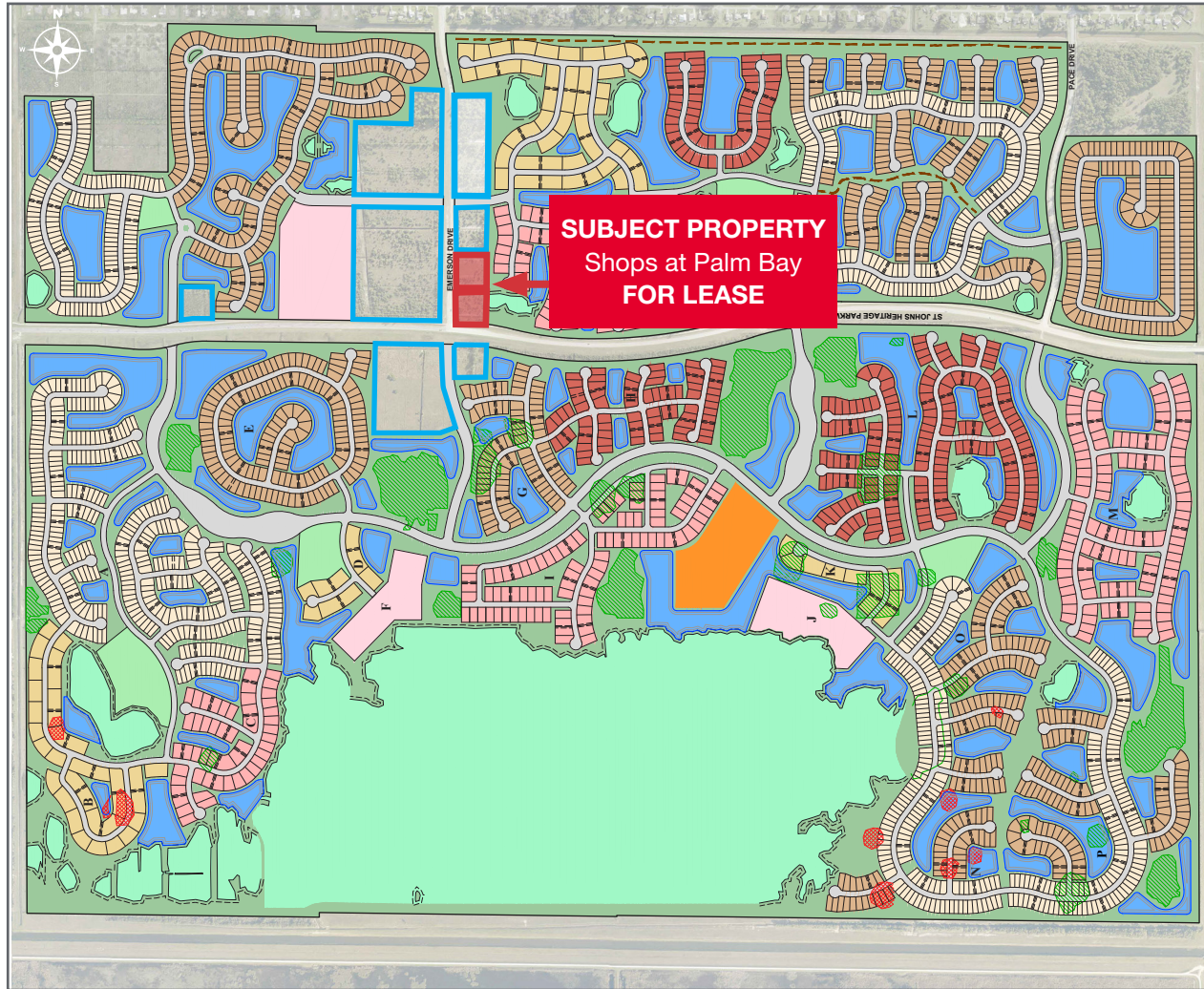
Demographic Highlights

	Average Household Income	Median Age
1 Mile	\$70,413	40.1
3 Miles	\$84,559	40.3
5 Miles	\$89,583	41.7

Shops at Palm Bay

St. Johns Heritage Pkwy & Emerson Drive, Palm Bay, FL 32907

Master Development Site Plan



SUBJECT PROPERTY
Shops at Palm Bay
FOR LEASE

PALM VISTA - WEST		
NW - (NON-AGE RESTRICTED)		
POD	PRODUCT	UNITS
A	SINGLE FAMILY - 40's	364
B	TOWNHOME - 4-unit & 6-unit	168
C	TWIN VILLAS	102
NW - UNIT TOTAL		634
SW - ACTIVE ADULT (AGE RESTRICTED)		
D	TOWNHOME - 4-unit & 6-unit	46
E	SINGLE FAMILY - 50's	149
F	MULTI-FAMILY CONDO	140
G	SINGLE FAMILY - 50's	82
H	SINGLE FAMILY - 60's	72
I	TWIN VILLAS	186
J	MULTI-FAMILY CONDO	140
K	TOWNHOME - 4-unit & 6-unit	52
L	SINGLE FAMILY - 60's	179
M	TWIN VILLAS	240
N	SINGLE FAMILY - 40's	90
	SINGLE FAMILY - 50's	43
O	SINGLE FAMILY - 40's	69
	SINGLE FAMILY - 50's	77
P	SINGLE FAMILY - 40's	120
	SINGLE FAMILY - 50's	94
SW - UNIT TOTAL		1779
WEST - UNIT TOTAL		2413

PALM VISTA - NORTHEAST	
NE - (NON-AGE RESTRICTED)	
PRODUCT	UNITS
SINGLE FAMILY - 40's	156
SINGLE FAMILY - 50's	242
MULTI-FAMILY	187
NE - UNIT TOTAL	585

PALM VISTA - EAST	
MEDLEY AT EVERLANDS	
ACTIVE ADULT (AGE RESTRICTED)	
PRODUCT	UNITS
TWIN VILLAS	150
TOWNHOME - 4-unit & 6-unit	234
SINGLE FAMILY - 40's	228
SINGLE FAMILY - 50's	166
SINGLE FAMILY - 60's	62
E - UNIT TOTAL	840

PALM VISTA - SOUTHEAST	
EVERLANDS	
PRODUCT	UNITS
SINGLE FAMILY - 50's	162
SE - UNIT TOTAL	162

LEGEND	
	TWIN VILLAS
	TOWNHOME - 4-unit & 6-unit
	MULTI-FAMILY
	SINGLE FAMILY - 40's
	SINGLE FAMILY - 50's
	SINGLE FAMILY - 60's
	AMENITY CENTER
	TOWN CENTER

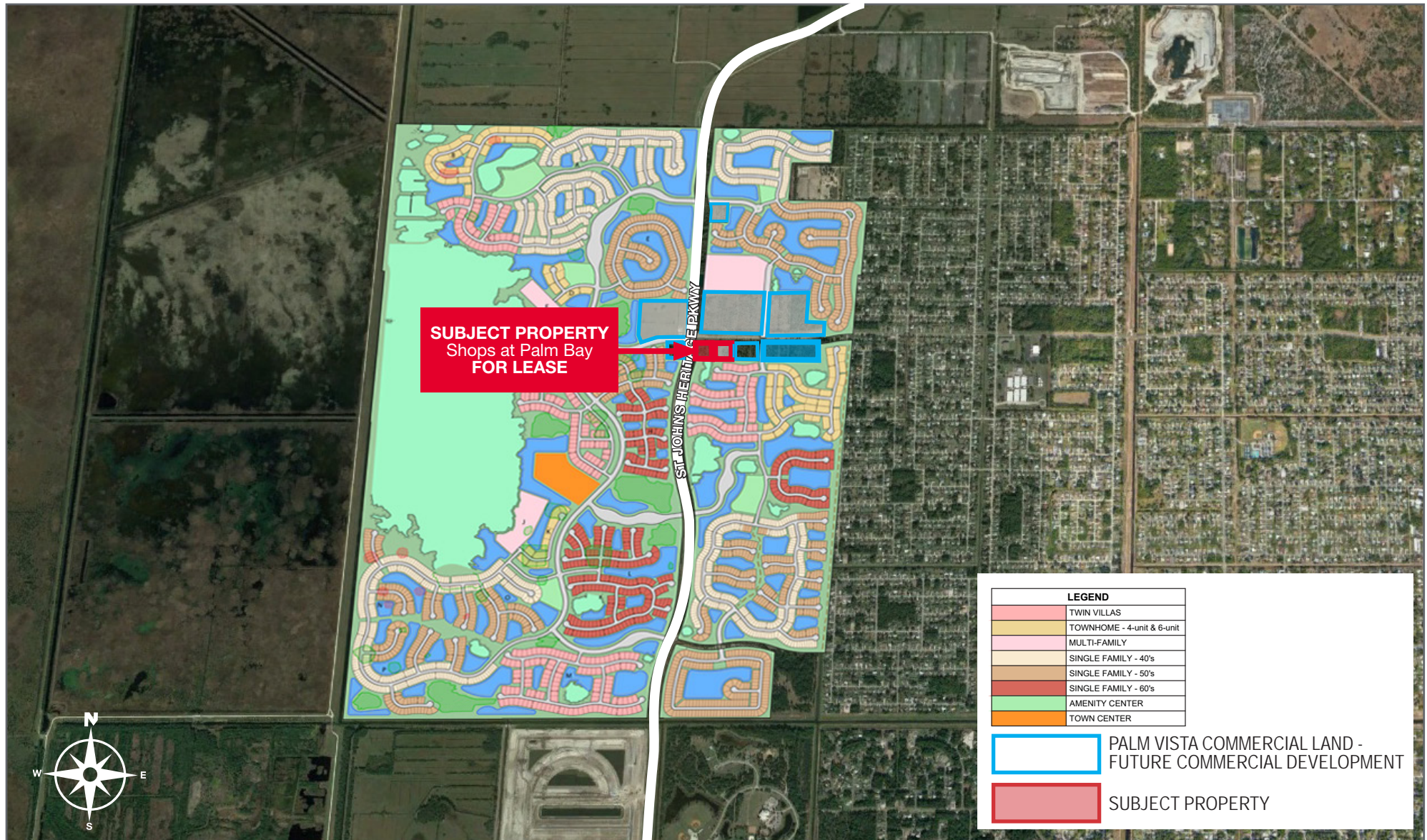
PALM VISTA - OVERALL	
UNIT COUNT SUMMARY	
	UNITS
WEST	2413
NORTHEAST	585
EAST	840
EVERLANDS (SOUTHEAST)	162
UNIT TOTAL	4000

- PALM VISTA COMMERCIAL LAND - FUTURE COMMERCIAL DEVELOPMENT
- SUBJECT PROPERTY

Shops at Palm Bay

St. Johns Heritage Pkwy & Emerson Drive, Palm Bay, FL 32907

Master Development Site Plan



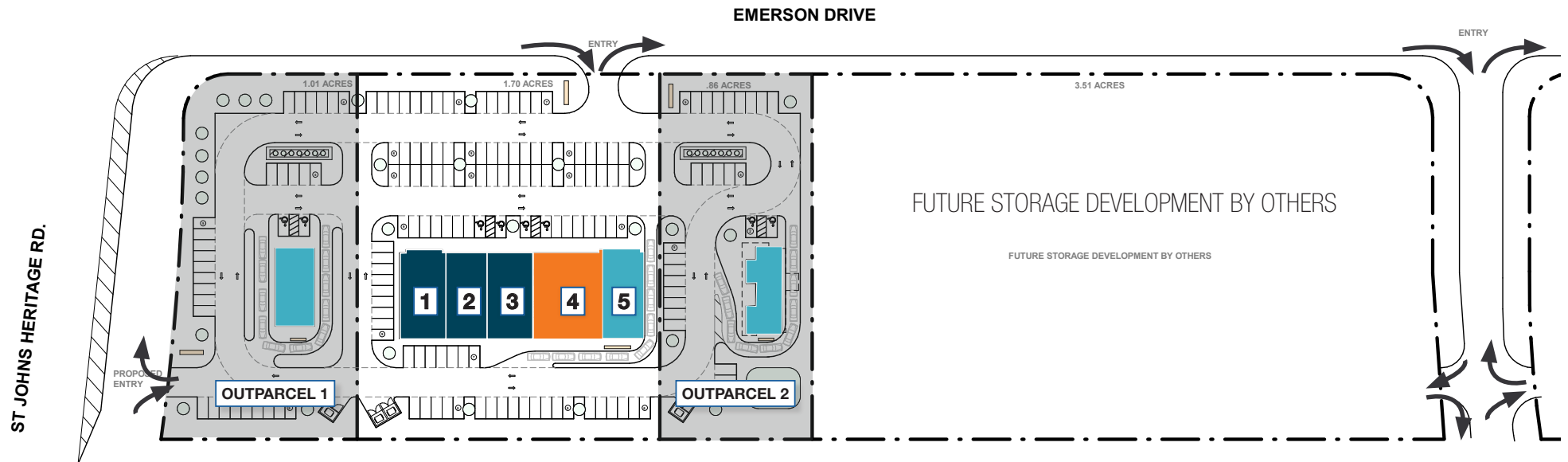
Shops at Palm Bay

St. Johns Heritage Pkwy & Emerson Drive, Palm Bay, FL 32907

Concept Site Plan

	Unit/ Outparcel	SF/AC	Status	Tenant
	1	2,200	Leased	Veterinarian
	2	2,000	Leased	Dentist
	3	3,000	Leased	Liquor Store
	4	1,300 - 5,064	Available	
	5	1,750	LOI	Drive-Thru Tea/Coffee
Outparcel	1	1.01	LOI	QSR Restaurant
	2	0.86	Lease Review	Automotive Retail

STATUS KEY ■ Available ■ Open ■ Signed Lease



Shops at Palm Bay

St. Johns Heritage Pkwy & Emerson Drive, Palm Bay, FL 32907

Renderings

SHOPS AT PALM BAY

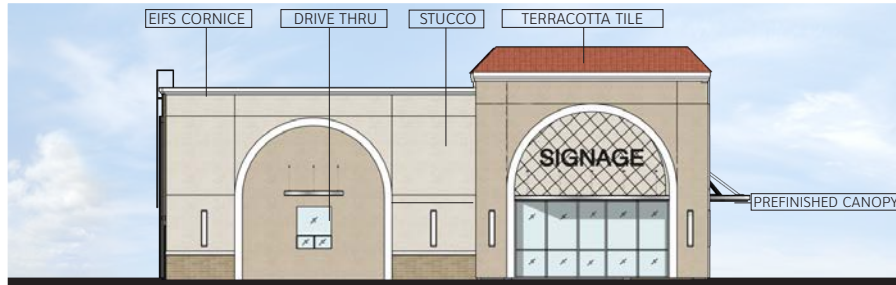


Shops at Palm Bay

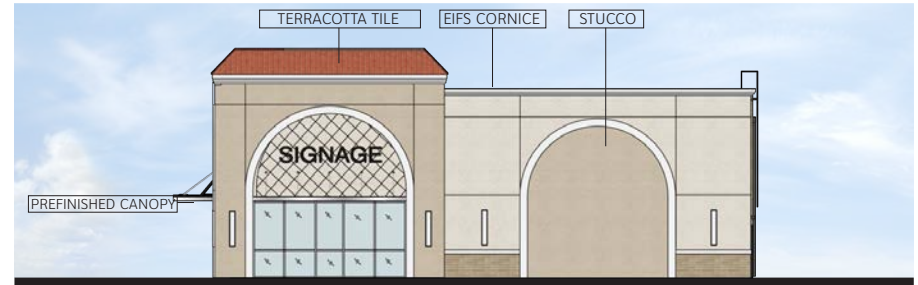
St. Johns Heritage Pkwy & Emerson Drive, Palm Bay, FL 32907

Renderings

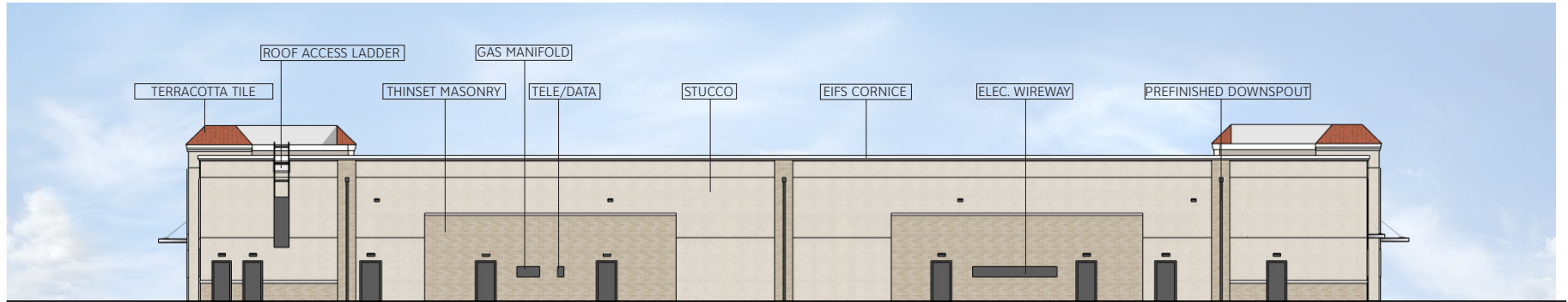
SHOPS AT PALM BAY



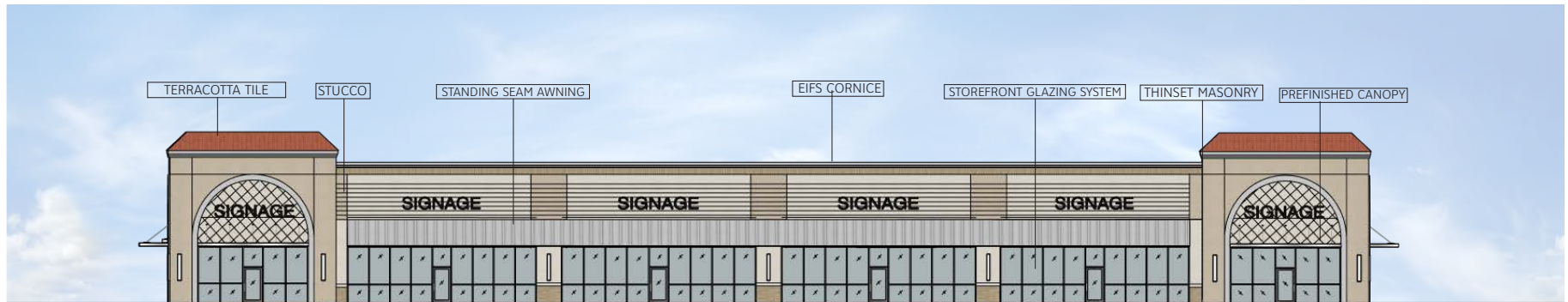
EXTERIOR ELEVATION - WEST



EXTERIOR ELEVATION - EAST



EXTERIOR ELEVATION - NORTH



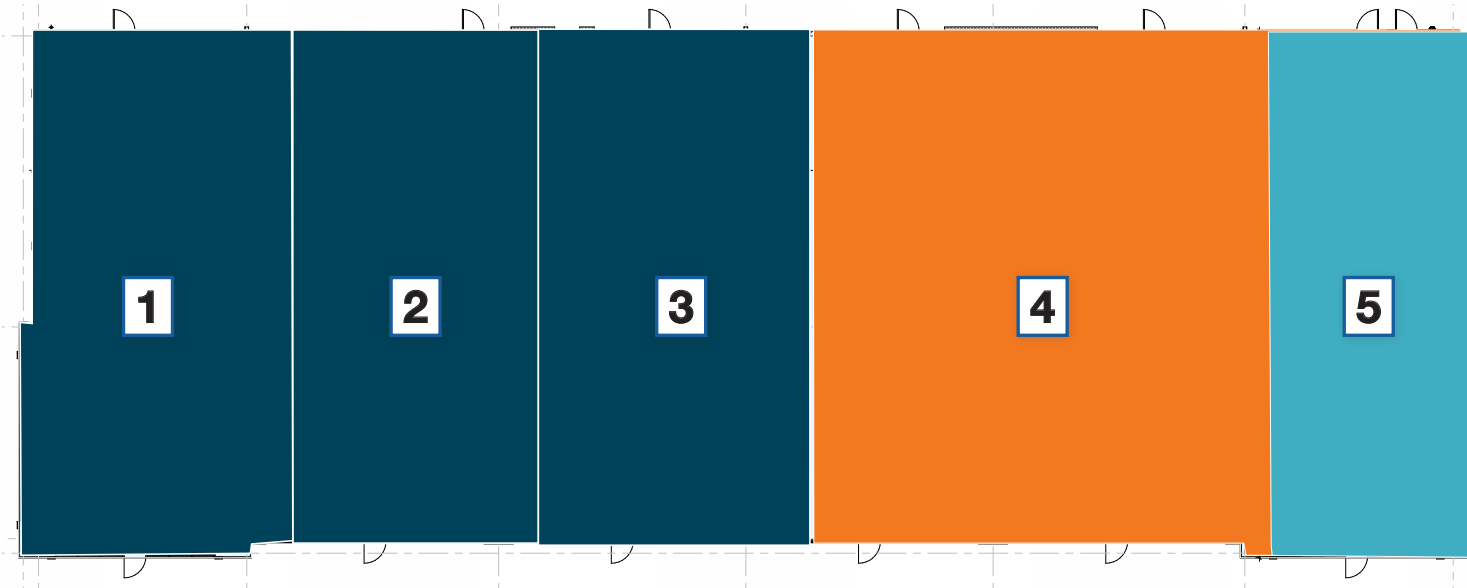
EXTERIOR ELEVATION - SOUTH

Shops at Palm Bay

St. Johns Heritage Pkwy & Emerson Drive, Palm Bay, FL 32907

LOD

	Unit/ Outparcel	SF/AC	Status	Tenant
	1	2,200	Leased	Veterinarian
	2	2,000	Leased	Dentist
	3	3,000	Leased	Liquor Store
	4	1,300 - 5,064	Available	
	5	1,750	LOI	Drive-Thru Tea/Coffee
Outparcel	1	1.01	LOI	QSR Restaurant
	2	0.86	Lease Review	Automotive Retail



STATUS KEY			
■	Available	■	Open
■	Signed Lease		

Shops at Palm Bay

St. Johns Heritage Pkwy & Emerson Drive, Palm Bay, FL 32907

Looking South

Unit/ Outparcel	SF/AC	Status	Tenant
1	2,200	Leased	Veterinarian
2	2,000	Leased	Dentist
3	3,000	Leased	Liquor Store
4	1,300 - 5,064	Available	
5	1,750	LOI	Drive-Thru Tea/Coffee
Outparcel			
1	1.01	LOI	QSR Restaurant
2	0.86	Lease Review	Automotive Retail

STATUS KEY Available Open Signed Lease



LENNAR
DEVELOPMENT
4,000 Units

LENNAR
DEVELOPMENT
4,000 Units

Future Commercial Development

EMERSON DRIVE 9,400 AADT (FUTURE FOUR LANE RD UNDER CONSTRUCTION)

Future Commercial Development

LENNAR
DEVELOPMENT
4,000 Units

Proposed Self Storage

OUTPARCEL 2

6 5 4 3 2 1

OUTPARCEL 1

CIRCLE K

Future Commercial Development (In Contract)

ST. JOHNS HERITAGE PKWY 8,700 AADT

ST. JOHNS EST COMPLETION TO FOUR LANES BY 2026



Shops at Palm Bay

St. Johns Heritage Pkwy & Emerson Drive, Palm Bay, FL 32907

Looking North

4,672 Homes, 300,000 SF Retail, 200,000 SF office, 290,000 SF Industrial, 100,000 SF religious uses, a 900 student elementary school a 400 student k-12 private school and a 400-student daycare center



	Unit/ Outparcel	SF/AC	Status	Tenant
	1	2,200	Leased	Veterinarian
	2	2,000	Leased	Dentist
	3	3,000	Leased	Liquor Store
	4	1,300 - 5,064	Available	
	5	1,750	LOI	Drive-Thru Tea/Coffee
Outparcel	1	1.01	LOI	QSR Restaurant
	2	0.86	Lease Review	Automotive Retail

STATUS KEY ■ Available ■ Open ■ Signed Lease

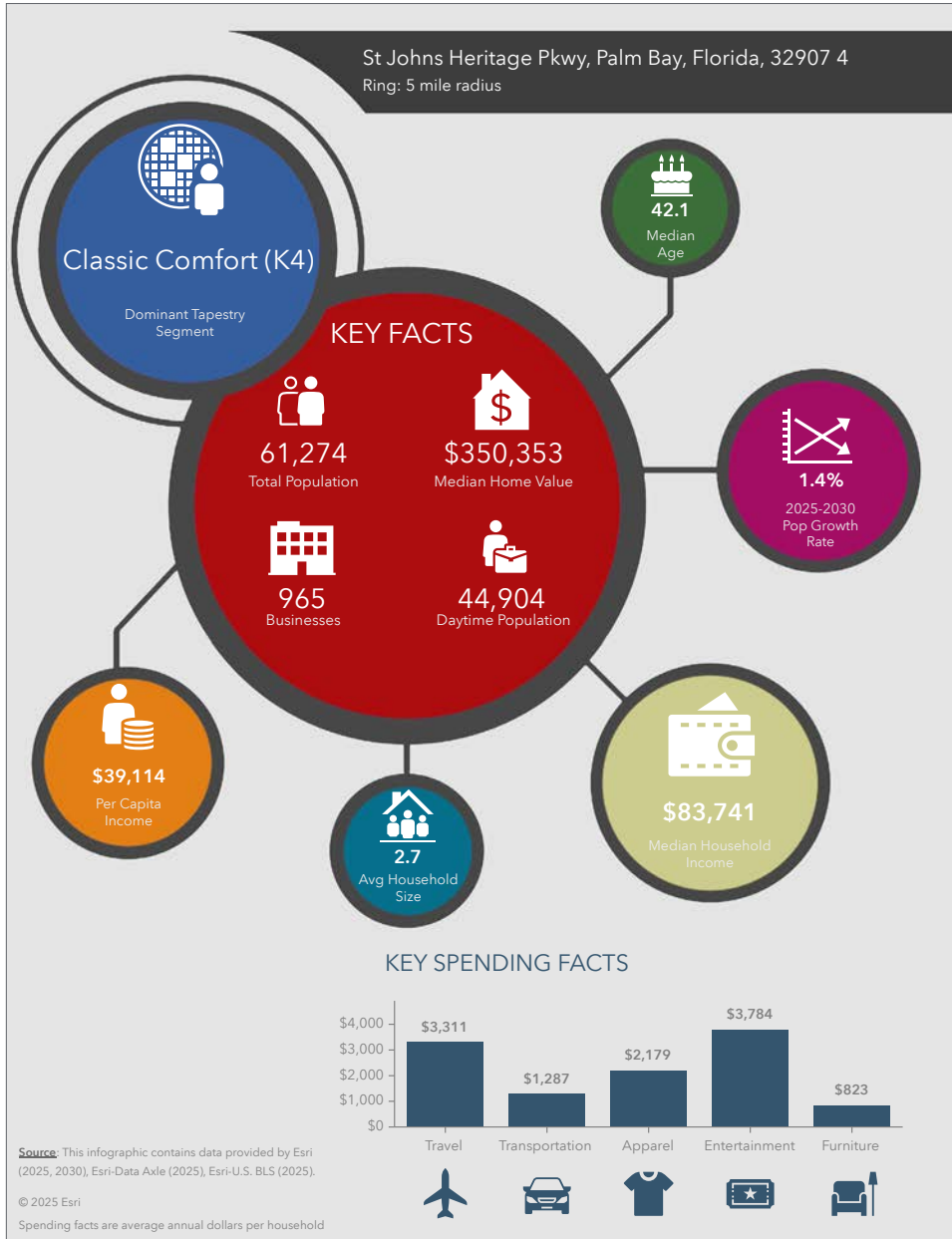


100 SW Albany Avenue, 2nd Floor, Stuart, Florida 34994
 +1 772 678 7600 | cushmanwakefield.com

Shops at Palm Bay

St. Johns Heritage Pkwy & Emerson Drive, Palm Bay, FL 32907

2025 Demographics



Population

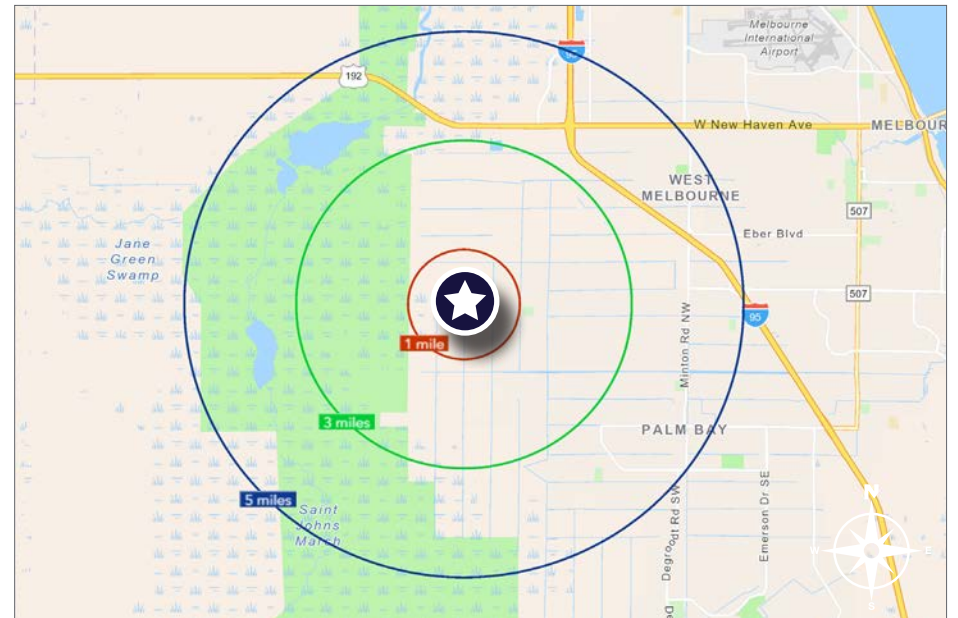
- 1 Mile: 2,595
- 3 Mile: 25,392
- 5 Mile: 61,274

Average Household Income

- 1 Mile: \$86,577
- 3 Mile: \$102,851
- 5 Mile: \$105,761

Median Age

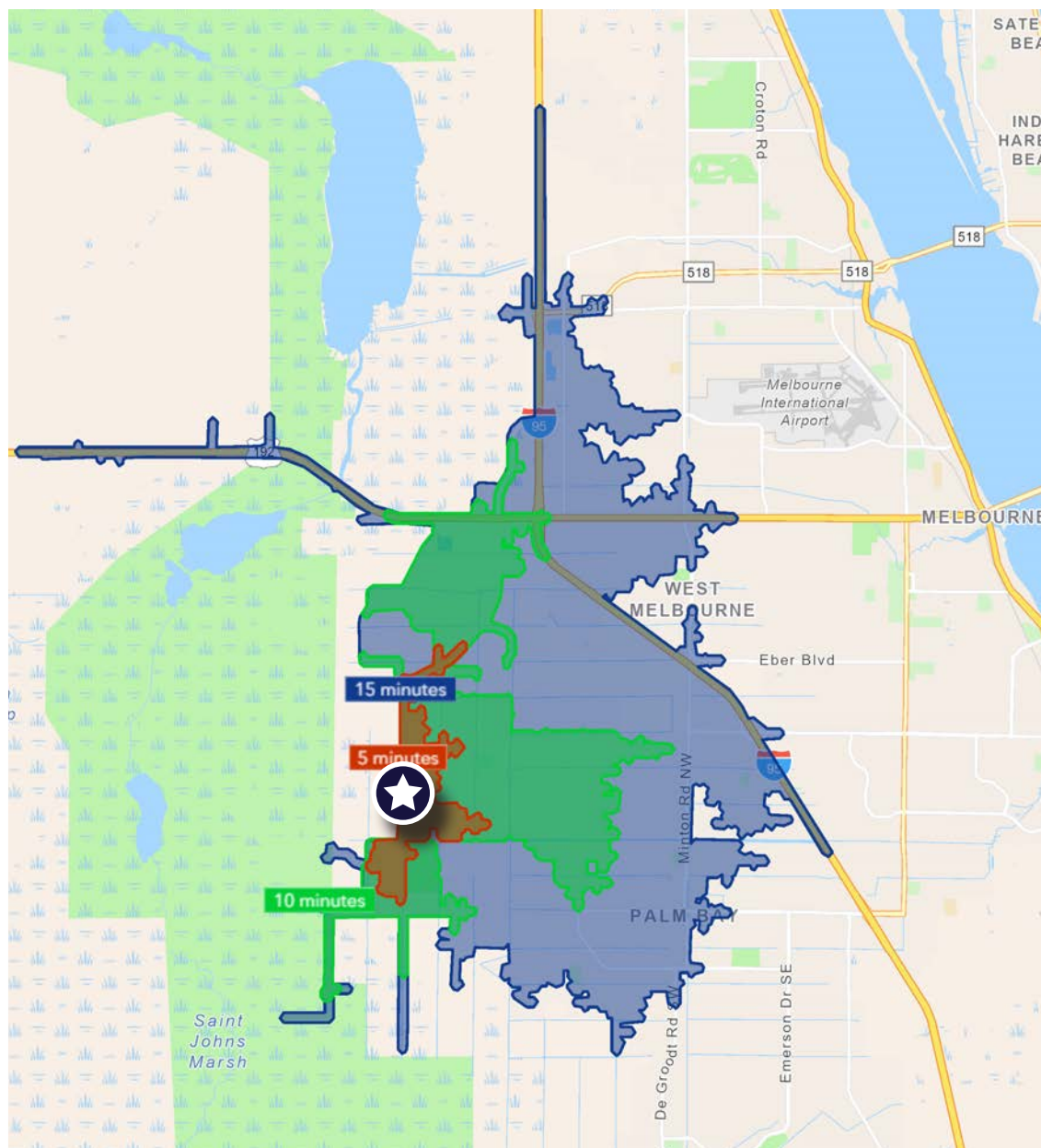
- 1 Mile: 43.9
- 3 Mile: 42.6
- 5 Mile: 42.1



Shops at Palm Bay

St. Johns Heritage Pkwy & Emerson Drive, Palm Bay, FL 32907

Drive Time



5 Minutes	10 Minutes	15 Minutes
1,401 2010 Population	16,543 2010 Population	45,526 2010 Population
2,645 2025 Population	18,995 2025 Population	59,582 2025 Population
88.7% 2010-2025 Population Growth	14.8% 2010-2025 Population Growth	30.8% 2010-2025 Population Growth
1.97% 2025-2030 (Annual) Est. Population Growth	0.69% 2025-2030 (Annual) Est. Population Growth	1.30% 2025-2030 (Annual) Est. Population Growth
41.8 2025 Median Age	42.9 2025 Median Age	42.7 2025 Median Age
\$93,736 Average Household Income	\$96,633 Average Household Income	\$103,899 Average Household Income
37.8% Percentage with Associates Degree or Better	37.6% Percentage with Associates Degree or Better	42.5% Percentage with Associates Degree or Better
59.6% Percentage in White Collar Profession	57.3% Percentage in White Collar Profession	63.1% Percentage in White Collar Profession

City Overview

City of Palm Bay, Florida



Palm Bay, Florida, situated along the picturesque eastern coast of the state, is a vibrant city that seamlessly blends natural beauty with urban development. As the largest city in Brevard County, Palm Bay offers residents and visitors a diverse array of attractions, stunning landscapes, and a thriving community spirit.

The city's claim to fame lies in its stunning waterfront areas, with the Indian River Lagoon to the west and the Atlantic Ocean to the east. These bodies of water not only provide breathtaking views but also offer recreational opportunities such as boating, fishing, and water sports. The Turkey Creek Sanctuary, a nature reserve within the city, further enhances Palm Bay's commitment to preserving its rich ecological diversity.

Palm Bay is home to a mix of residential neighborhoods, each with its own unique character. From family-friendly communities with top-rated schools to upscale waterfront properties, the city caters to a diverse range of lifestyles. The housing market reflects the city's growth, with a combination of modern developments and established neighborhoods, providing a range of options for prospective residents.

The city's commitment to education is evident through its well-regarded schools and educational institutions. Palm Bay is served by the Brevard County School District, ensuring quality education for students at all levels. Higher education opportunities are also available with the nearby Florida Institute of Technology, offering a range of academic programs.

Palm Bay's economic landscape is shaped by a mix of industries, including aerospace and technology. The presence of major employers in these sectors has contributed to the city's economic stability and job growth. Additionally, the city's strategic location along major transportation routes facilitates commerce and trade.

Residents and visitors alike can enjoy a variety of recreational activities in Palm Bay. The city boasts numerous parks, sports facilities, and cultural venues. Fred Poppe Regional Park, for example, offers sports fields, playgrounds, and picnic areas, providing a space for community gatherings and outdoor enjoyment.

Palm Bay, Florida, stands out as a city that harmoniously blends natural beauty, a diverse community, and economic opportunities. With its stunning waterfront, educational excellence, and recreational offerings, Palm Bay has become a sought-after destination for those seeking a balanced and fulfilling lifestyle on Florida's Space Coast.

Regional Overview

Brevard County, FL

Brevard County, on Florida's east coast, is renowned for its natural wonders, space exploration, and vibrant communities. The county, encompassing various cities and towns, provides a unique mix of coastal beauty, educational excellence, and a rich cultural tapestry.

At its core, Brevard County is synonymous with space exploration, housing the Kennedy Space Center, a renowned spaceport that launched historic missions like the Apollo moon landings and Space Shuttle launches. This has made the Space Coast a hub for aerospace and technology industries.

The county's Atlantic Ocean coastline offers stunning beaches and recreational opportunities, from bustling Cocoa Beach to the serene Canaveral National Seashore. The Indian River Lagoon adds to the area's natural charm.

Brevard County hosts diverse communities, each with unique character and amenities. Melbourne, the largest city, features residential neighborhoods, cultural attractions, and educational institutions. Titusville, with historic charm, serves as a gateway to the Kennedy Space Center and Merritt Island National Wildlife Refuge. Satellite Beach and Palm Bay offer varied housing options and community experiences.

Education is a priority, with the Brevard County School District ensuring academic excellence. Higher education is accessible through institutions like the Florida Institute of Technology.

Recreational activities are abundant, from outdoor adventures in parks to cultural events. The county's commitment to preserving natural beauty is evident in conservation areas and wildlife sanctuaries.

Brevard County, Florida, offers a captivating blend of space exploration, coastal beauty, and diverse communities. With a rich history, educational opportunities, and innovation, Brevard County remains a place where residents enjoy a high quality of life amidst the wonders of Florida's Space Coast.



A DEVELOPMENT BY:  **Hunnington**

Shops at Palm Bay

St. Johns Heritage Pkwy & Emerson Drive, Palm Bay, FL

Presented by



J. Jeffery Allman, Jr.

o: +1 772 678 7608
 m +1 772 283 1555
 jeff.allman@cushwake.com



RETAIL FOR LEASE | OUTPARCELS FOR SALE/GROUND LEASE

Call for Pricing Guidance

©2026 Cushman & Wakefield. All rights reserved. The information contained in this communication is strictly confidential. This information has been obtained from sources believed to be reliable but has not been verified. NO WARRANTY OR REPRESENTATION, EXPRESS OR IMPLIED, IS MADE AS TO THE CONDITION OF THE PROPERTY (OR PROPERTIES) REFERENCED HEREIN OR AS TO THE ACCURACY OR COMPLETENESS OF THE INFORMATION CONTAINED HEREIN, AND SAME IS SUBMITTED SUBJECT TO ERRORS, OMISSIONS, CHANGE OF PRICE, RENTAL OR OTHER CONDITIONS, WITHDRAWAL WITHOUT NOTICE, AND TO ANY SPECIAL LISTING CONDITIONS IMPOSED BY THE PROPERTY OWNER(S). ANY PROJECTIONS, OPINIONS OR ESTIMATES ARE SUBJECT TO UNCERTAINTY AND DO NOT SIGNIFY CURRENT OR FUTURE PROPERTY PERFORMANCE.