

17 EAST 17TH ST

BETWEEN 5TH AVENUE AND BROADWAY



PRIME FLATIRON/ UNION SQUARE

17 EAST
17TH ST

RETAIL

Ground Floor – 1,611 sqft

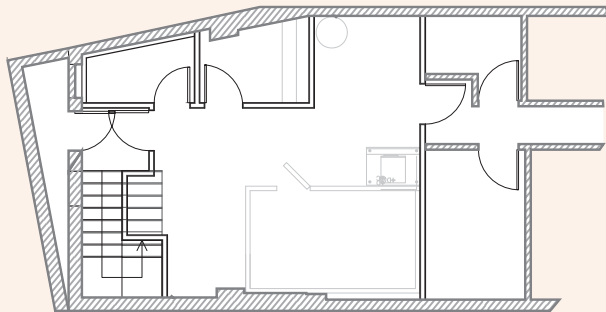
Lower Level – 683 sqft

Ceiling Height - 12.5 ft

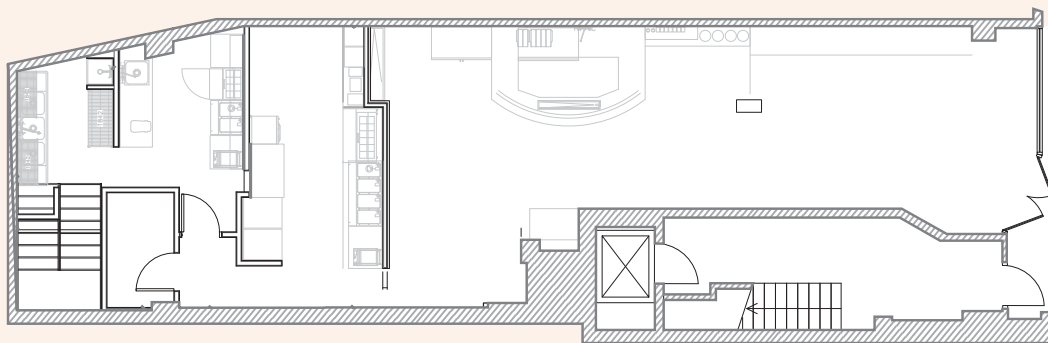
Frontage - 20 ft

RETAIL SPACE

Lower Level



Ground Floor



EAST 17TH ST

- Stone throw away from Union Square Park
- This space was formerly Dig In so it's fully built out as a QSR restaurant space. It has a fully built out kitchen and walk in refrigeration.
- The space is ADA compliant
- Steps away from 5th Avenue's prime retail corridor.



THE NEIGHBORHOOD

17 EAST 17TH ST

