



# Former Grocery Outlet FOR LEASE

R&R Commercial Realty, Inc.



SPACE FOR LEASE

FORMER GROCERY OUTLET ~ 15,601 SF  
7660 BELAIR RD, NOTTINGHAM MD 21236



# THE SPACE

Location	7660 Belair Rd Nottingham, MD 21236
County	Baltimore
Size	15,601 SF

## HIGHLIGHTS

- ❖ Former Grocery Outlet For Lease ~ 15,601 sf
- ❖ Located in the Belair Beltway Plaza positioned on Belair Rd (US-1) with 40,000 +/- VPD and immediate access to I-695
- ❖ Less than a mile from White Marsh Mall and The Avenue at White Marsh
- ❖ Dense suburban market with strong commuter traffic



### POPULATION

	1.00 MILE	3.00 MILE	5.00 MILE
	11,919	149,224	351,898

### AVERAGE HOUSEHOLD INCOME

	1.00 MILE	3.00 MILE	5.00 MILE
	\$101,253	\$102,025	\$101,384

### NUMBER OF HOUSEHOLDS

	1.00 MILE	3.00 MILE	5.00 MILE
	4,901	60,991	143,142



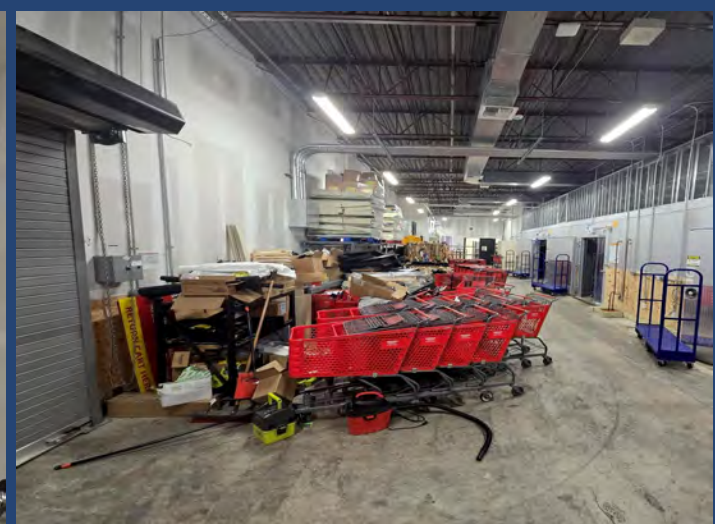
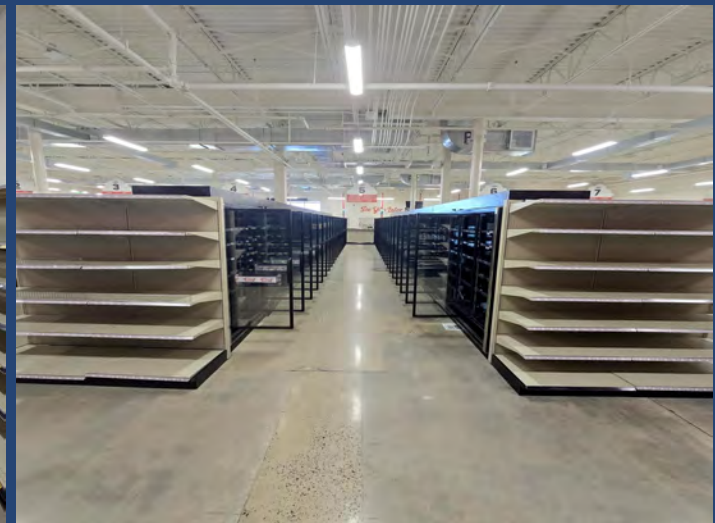
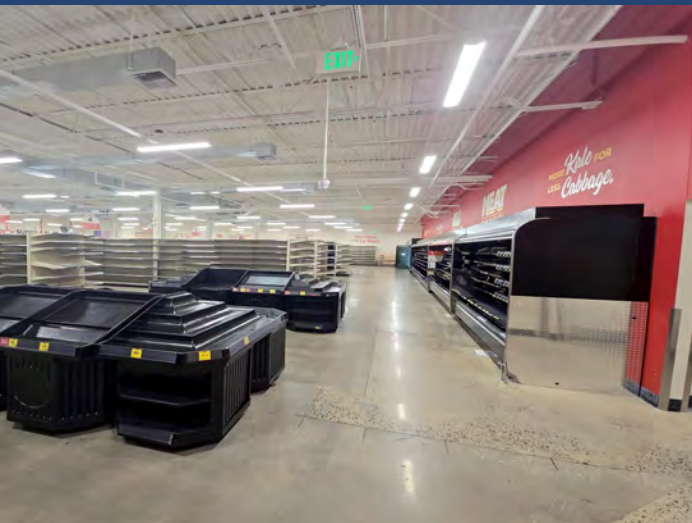
Tracey L Horstmann  
Salesperson  
(410) 790-9675  
traceyhorstmann@outlook.com

Charles Rodriguez  
Broker  
(302) 674-3400  
ccrod1@aol.com



R&R Commercial Realty  
46 S. State Street, Dover, DE 19901





# SPACE FOR LEASE

## CONFIDENTIALITY and DISCLAIMER

All information contained herein is believed to be accurate, however was obtained from third parties and R & R Commercial Realty, Inc. does not warrant as to the accuracy submitted, subject to changes or modification without notice. Listing Broker represents the sellers interest.

Organics

GROCERY  
OUTLET  
bargain market

7660

Exclusively Marketed by:

**Tracey L Horstmann**

Salesperson

(410) 790-9675

traceyhorstmann@outlook.com

**Charles Rodriguez**

Broker

(302) 674-3400

ccrod1@aol.com



<http://www.randrcommercialrealty.com>

R&R Commercial Realty  
46 S. State Street, Dover, DE 19901

powered by CREOP