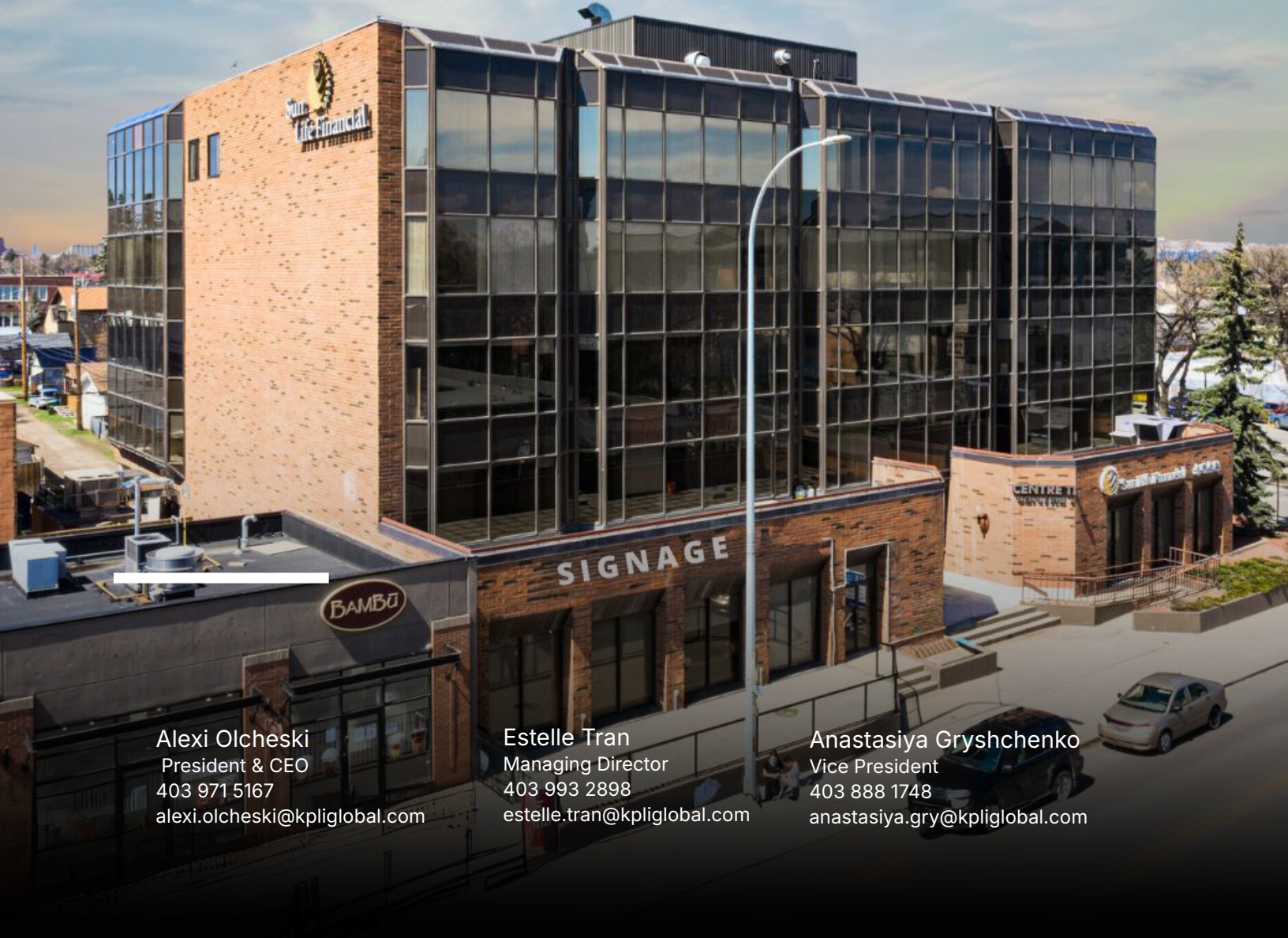




FOR LEASE

CENTRE 11

1121 CENTRE STREET NW



Alexi Olcheski
President & CEO
403 971 5167
alexi.olcheski@kpliglobal.com

Estelle Tran
Managing Director
403 993 2898
estelle.tran@kpliglobal.com

Anastasiya Gryshchenko
Vice President
403 888 1748
anastasiya.gryshchenko@kpliglobal.com

CENTRE 11

1121 Centre Street NW

Show Suites Availabilities

Suite 110 **Leased** 3,390-sf

Suite 200 **Leased** 2,500-sf

Suite 440 1,809 sf

Full Floor Availabilities

Second floor 9,430 sf

Third floor 11,930 sf





Fifth floor 11,930 sf

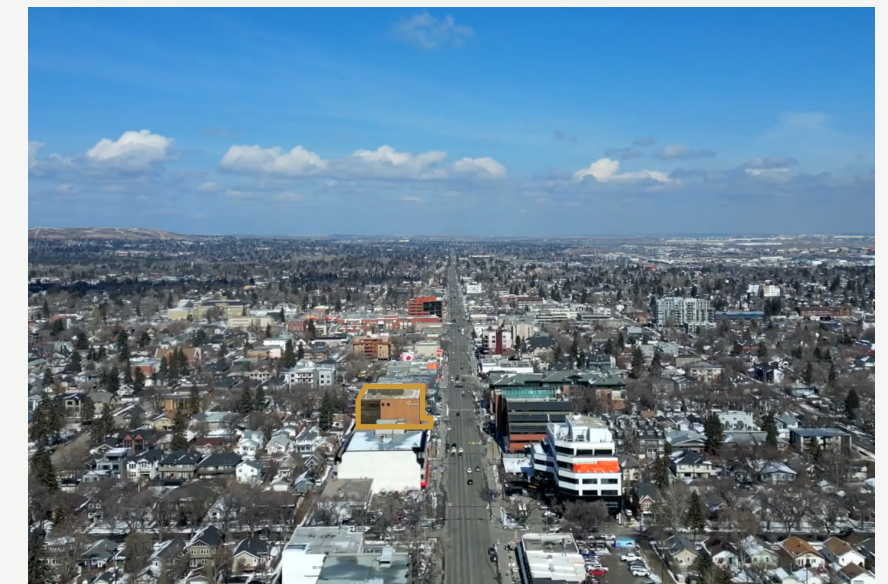
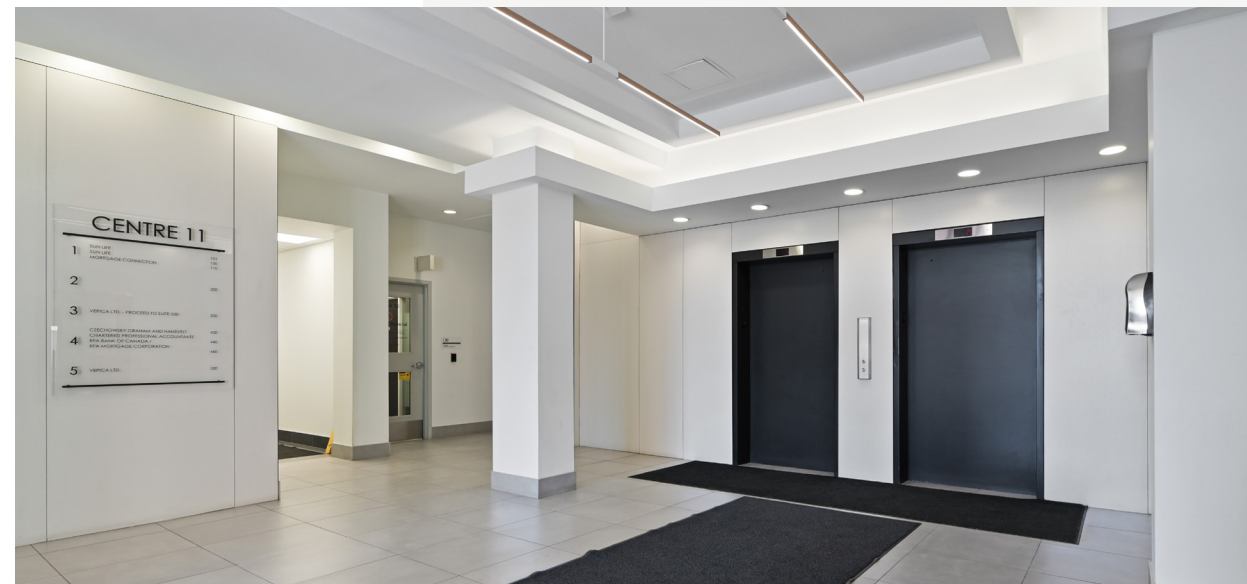
Property Details

Operating Costs **Op. Costs - \$13.73**
Taxes - \$2.42
Total - \$16.15

Parking Ratio 1 : 649 sf



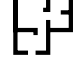

Property Highlights

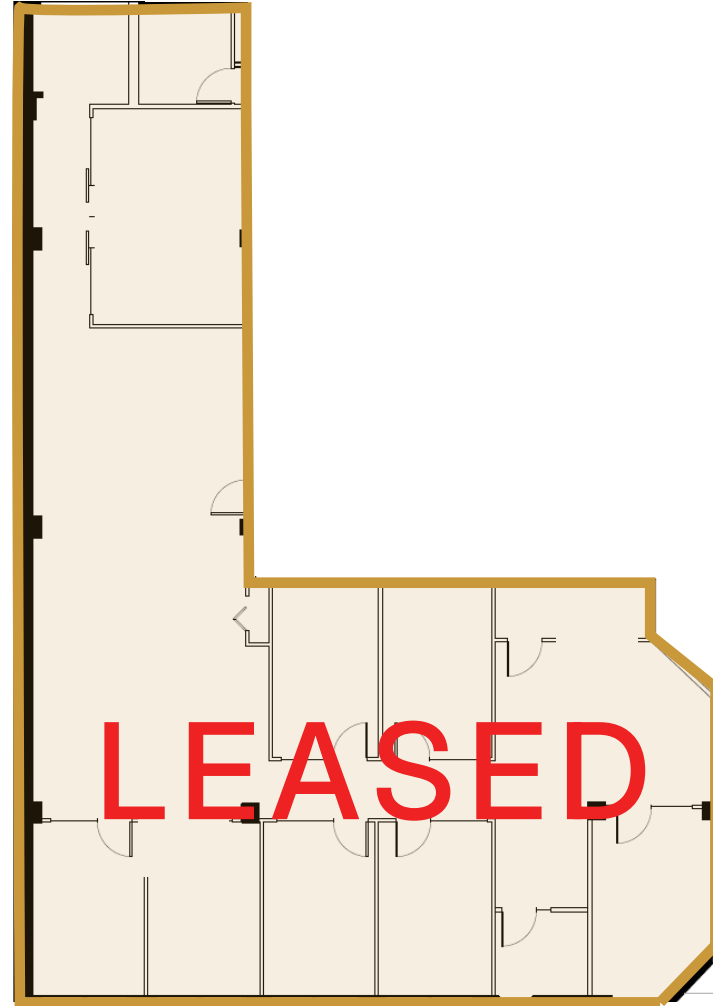
-  Located at the corner of 11 Avenue NW & Centre Street
-  Serviced by several bus routes
-  Ample amenities in the surrounding area
-  High-exposure signage opportunities



Main Floor

Suite 110 - 3,390 SF

-  7 Offices
-  1 Boardroom room
-  Open Area
-  5 Underground parking stalls



Second Floor

Suite 200 - 2,500 SF

-  7 Offices
-  1 Boardroom room
-  Open Area
-  Kitchen/Lunch area
-  Copy room
-  3 Underground parking stalls





Fourth Floor

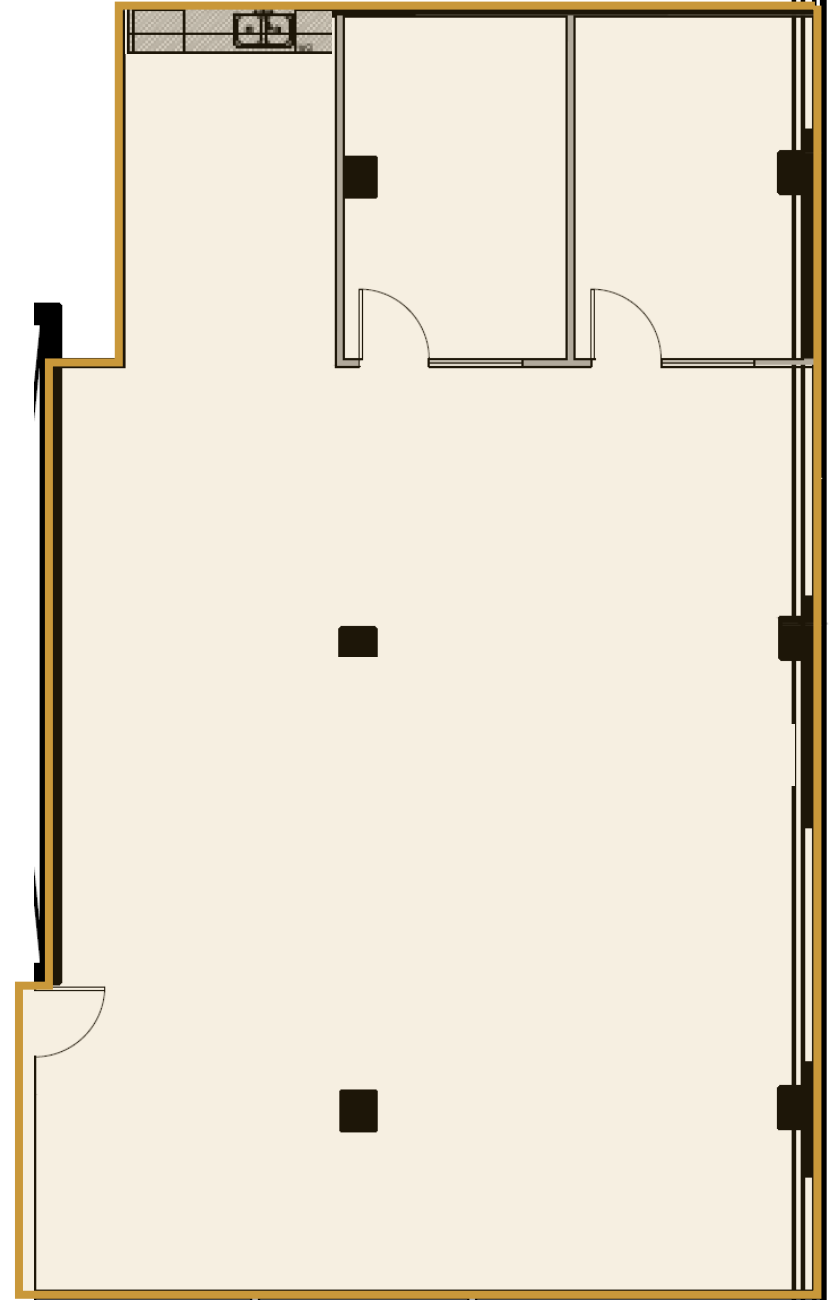
Suite 440 - 1,809 SF

 2 Offices

 Kitchen

 Open Area

 2 Underground parking stalls



Second Floor

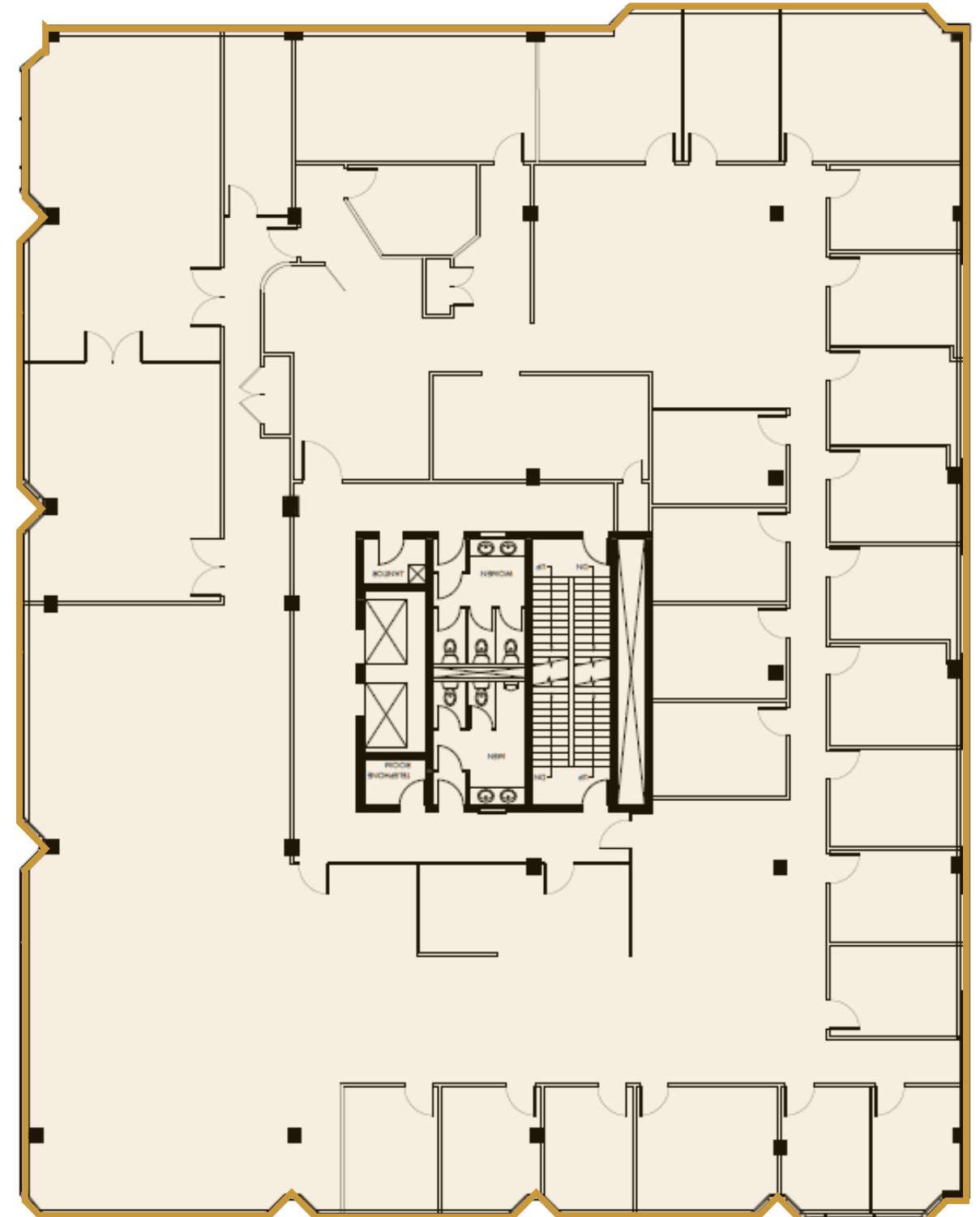
11,930 SF



LEASED

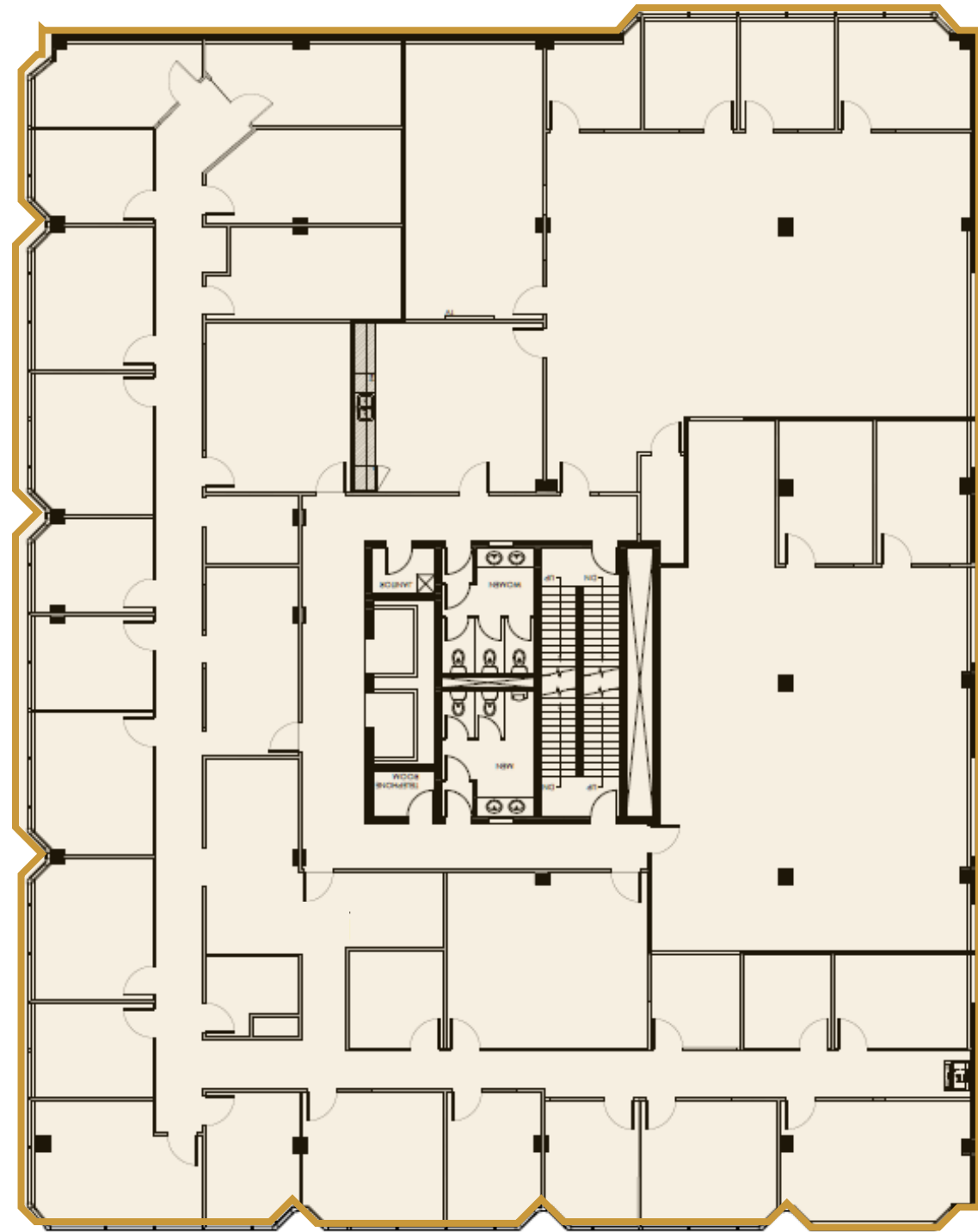
Third Floor

11,930 SF



Fifth Floor

11,930 SF



CENTRE 11

1121 CENTRE SREET NW

Alexi Olcheski

President & CEO

403 971 5167

alexi.olcheski@kpliglobal.com

Estelle Tran

Managing Director

403 993 2898

estelle.tran@kpliglobal.com

Anastasiya Gryshchenko

Vice President

403 888 1748

anastasiya.gry@kpliglobal.com

KPLI Global.



KPLI
GLOBAL