

WEST VALLEY EXECUTIVE PARK - OFFICE SPACE FOR LEASE

±767 RSF // ±1,038 RSF // ±1,573 RSF AVAILABLE



HIGHLIGHTS:

- Professional ground floor location with many windows
- Common Area Kitchen for tenants
- Surrounded by surface parking
- Available now, call to tour!

LOCATION:

- West San Jose, situated along Moorpark Avenue between Saratoga Avenue and Lawrence Expressway
- Quick Freeway 280 access @ Saratoga Avenue Interchange
- Close to Santana Row, restaurants, grocery stores & tea shops

4000 MOORPARK AVENUE | SAN JOSE, CA.

Please Contact Exclusive Agent:

JULIE MERCIK

jmercik@ritchiecommercial.com

(c) 408.234.1599 (o) 408.971.2700

DRE CA Lic. #00851651

ITCHIE *Commercial*
RESPONSIBLE REAL ESTATE

34 WEST SANTA CLARA STREET, SAN JOSE, CA. 95113

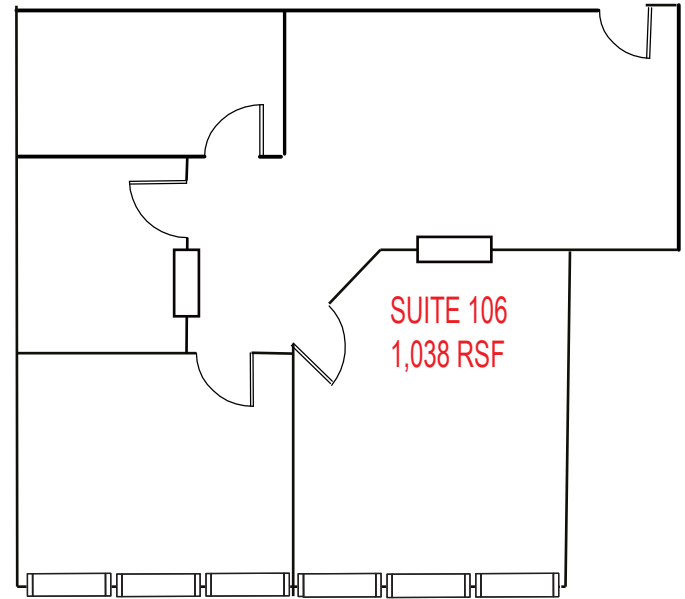
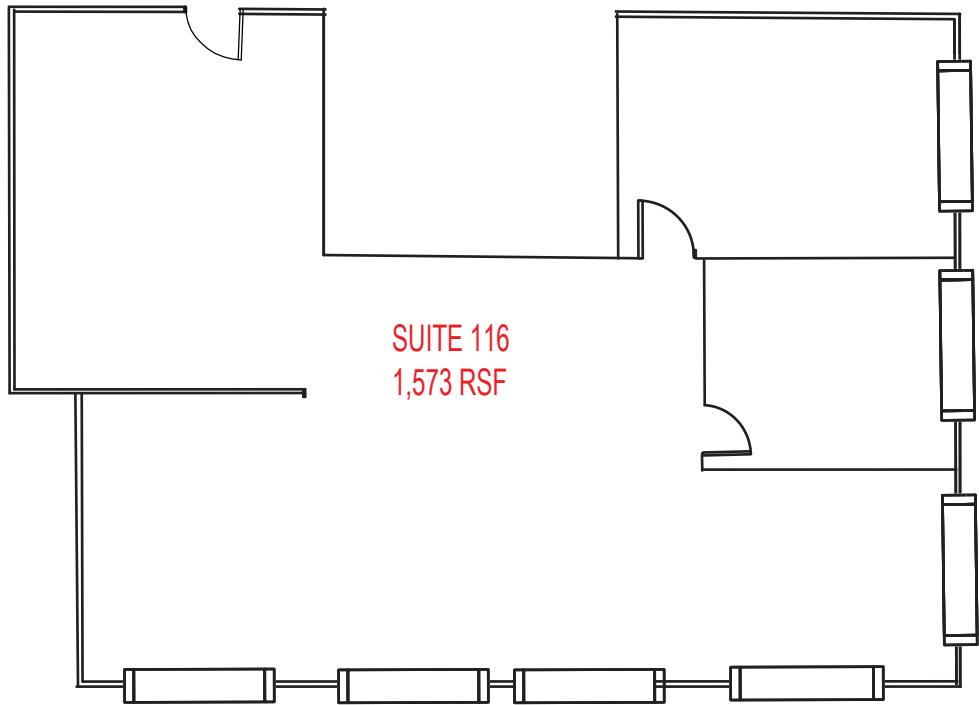
408.971.2700 fax: 408.971.1600

DRE #01209214 | www.ritchiecommercial.com

San Francisco | San Jose | Santa Cruz

4000 MOORPARK AVENUE | SAN JOSE, CA.

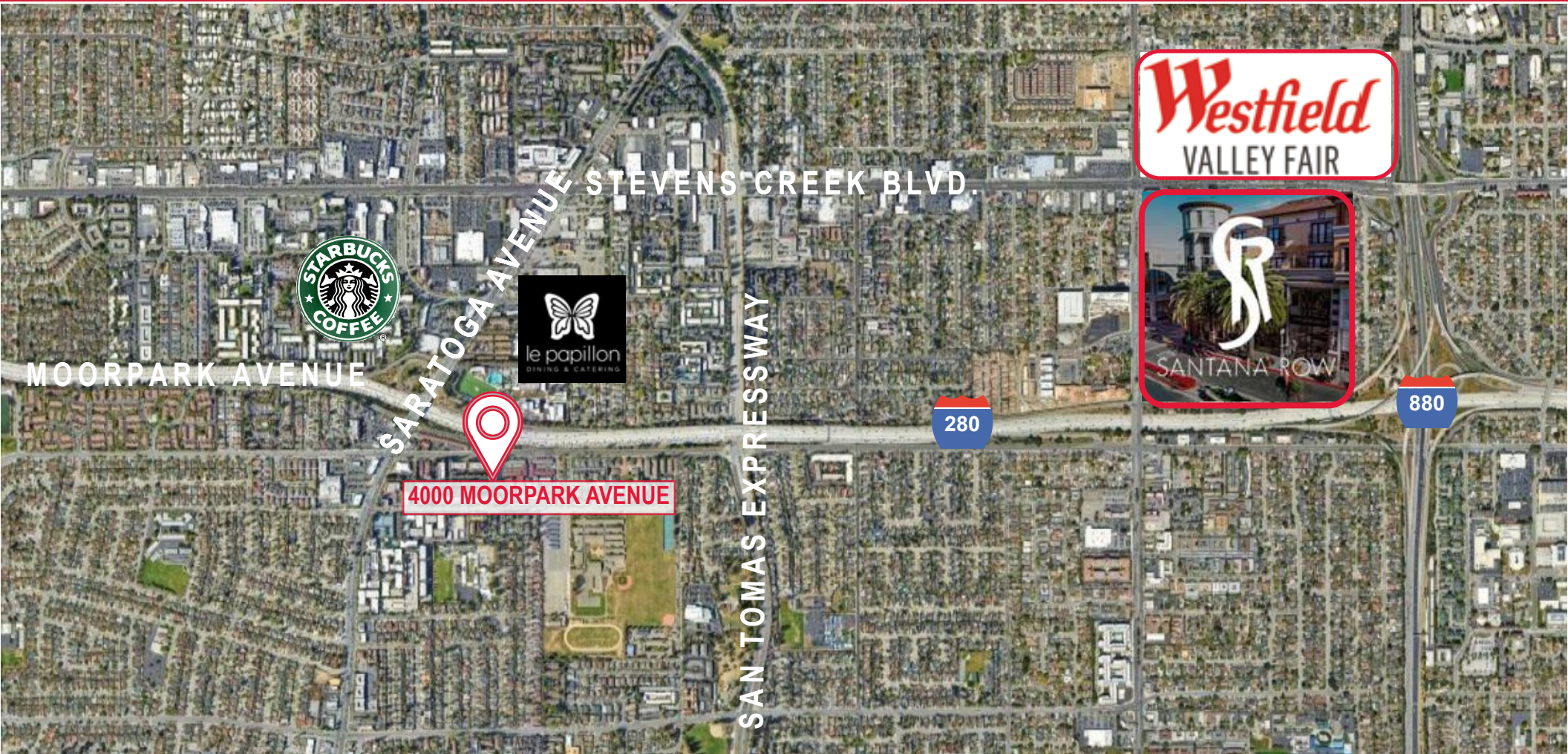
RITCHIE *Commercial*
RESPONSIBLE REAL ESTATE



FLOORPLANS NOT TO SCALE



4000 MOORPARK AVENUE | SAN JOSE, CA.



Please Contact Exclusive Agent:

JULIE MERCIK

jmercik@ritchiecommercial.com

(c) 408.234.1599 (o) 408.971.2700

DRE CA Lic. #00851651



RITCHIE *Commercial*
RESPONSIBLE REAL ESTATE

34 W. SANTA CLARA STREET, SAN JOSE, CA 95113

DRE # 01209214 | www.ritchiecommercial.com

1 408.971.2700 f 1 408.971.1600

San Francisco | San Jose | Santa Cruz | Walnut Creek