

Trailer Parking Available

9545 S. John Young Parkway
Orlando, Florida 32819

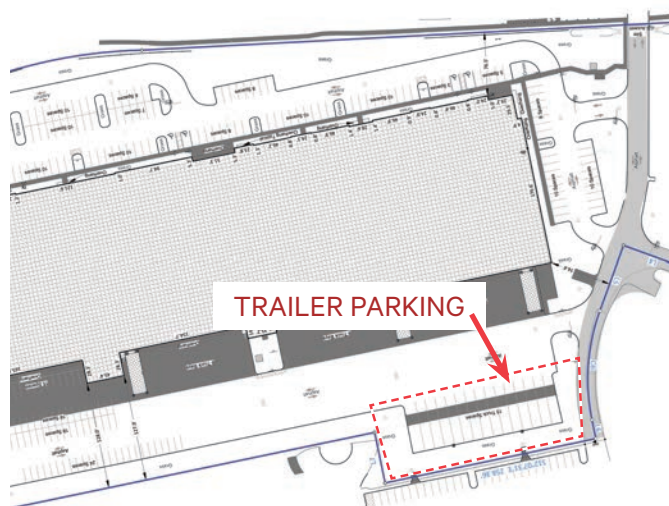
15 TRAILER SPACES



Location Highlights

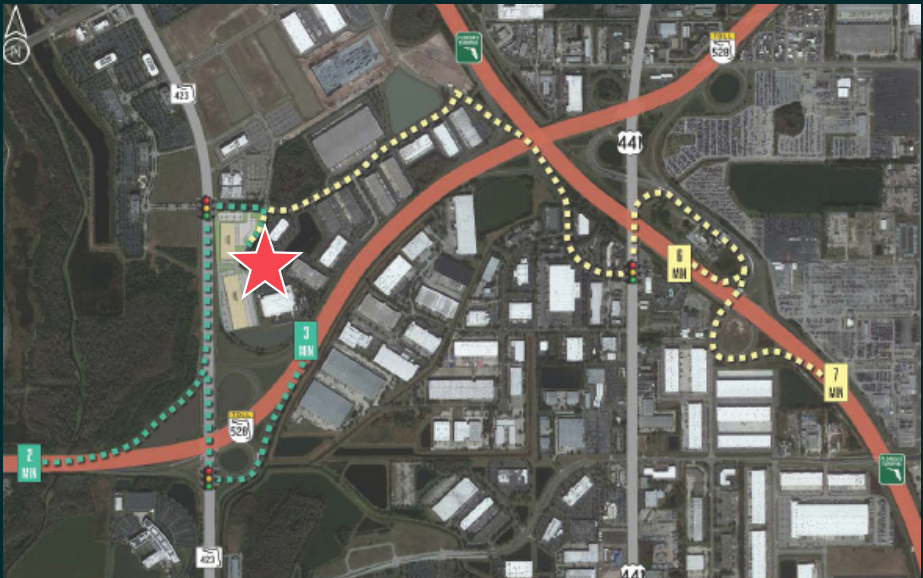
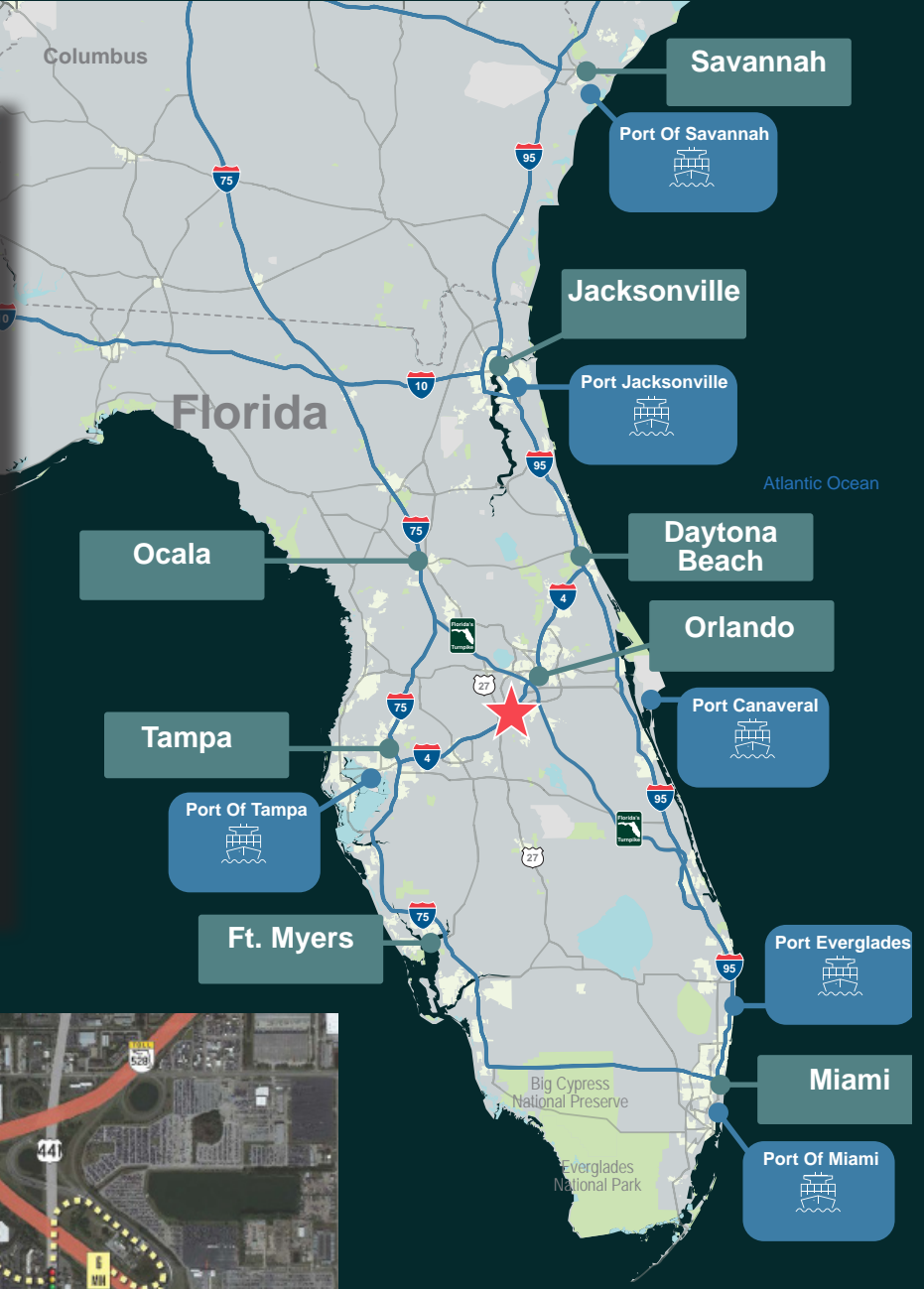
- + Immediate access to Beachline Expwy and Florida's Turnpike
- + Less than 20 minutes to all major Central Florida highways
- + Excellent location adjacent to established business parks

- + Minutes from Orlando's theme parks and I-Drive tourist corridor
- + Prime frontage on John Young Parkway with 72,000 AADT
- + Reach almost four million people within a 1-hour drive



Drive Times & Distances

Beachline Expressway	2 minutes	1 mile
Florida's Turnpike	6 minutes	2 miles
Interstate 4	6 minutes	2 miles
SR 417	9 minutes	4.5 miles
SR 408	16 minutes	9.3 miles
SR 429	17 minutes	25 miles
Orlando Intl. Airport	12 minutes	9.4 miles
Tampa Intl. Airport	1.5 hours	85.2 miles
Port Canaveral	1 hour	53.5 miles
Port of Tampa	1.25 hours	77.6 miles
Downtown Orlando	18 minutes	9.6 miles
Tampa	1.25 hours	78.3 miles
Jacksonville	2.5 hours	150 miles
Miami	3.5 hours	227 miles
Atlanta, GA	6.5 hours	441 miles



Florida Industrial & Logistics Contact Us:

David Murphy
 Vice Chairman
 +1 407 404 5020
david.murphy@cbre.com

Monica Wonus
 Executive Vice President
 +1 407 404 5042
monica.wonus@cbre.com

Gaby Gissy
 Associate
 +1 407 404 5012
gaby.gissy@cbre.com

Sharif Baker
 Associate
 +1 407 404 5018
sharif.baker@cbre.com



© 2026 CBRE, Inc. All rights reserved. This information has been obtained from sources believed reliable, but has not been verified for accuracy or completeness. You should conduct a careful, independent investigation of the property and verify all information. Any reliance on this information is solely at your own risk. CBRE and the CBRE logo are service marks of CBRE, Inc. All other marks displayed on this document are the property of their respective owners, and the use of such logos does not imply any affiliation with or endorsement of CBRE. Photos herein are the property of their respective owners. Use of these images without the express written consent of the owner is prohibited.

www.cbre.com/people/david-murphy