

# Prime Space at Luxury Marina



AVAILABLE



ONE SPACE  
REMAINING



LAS OLAS  
MARINA

# ASSET OVERVIEW

---



Las Olas Marina is an iconic destination developed by Suntex Marinas. The design of the Marina and uplands feature a waterfront, tree-lined promenade with public access, boat slips to accommodate mega yachts, dockage and boater services facilities in a world-class marina, signature fine dining restaurants, boutique retail tenants, state-of-the-art infrastructure improvements, and lush pedestrian-friendly landscape.

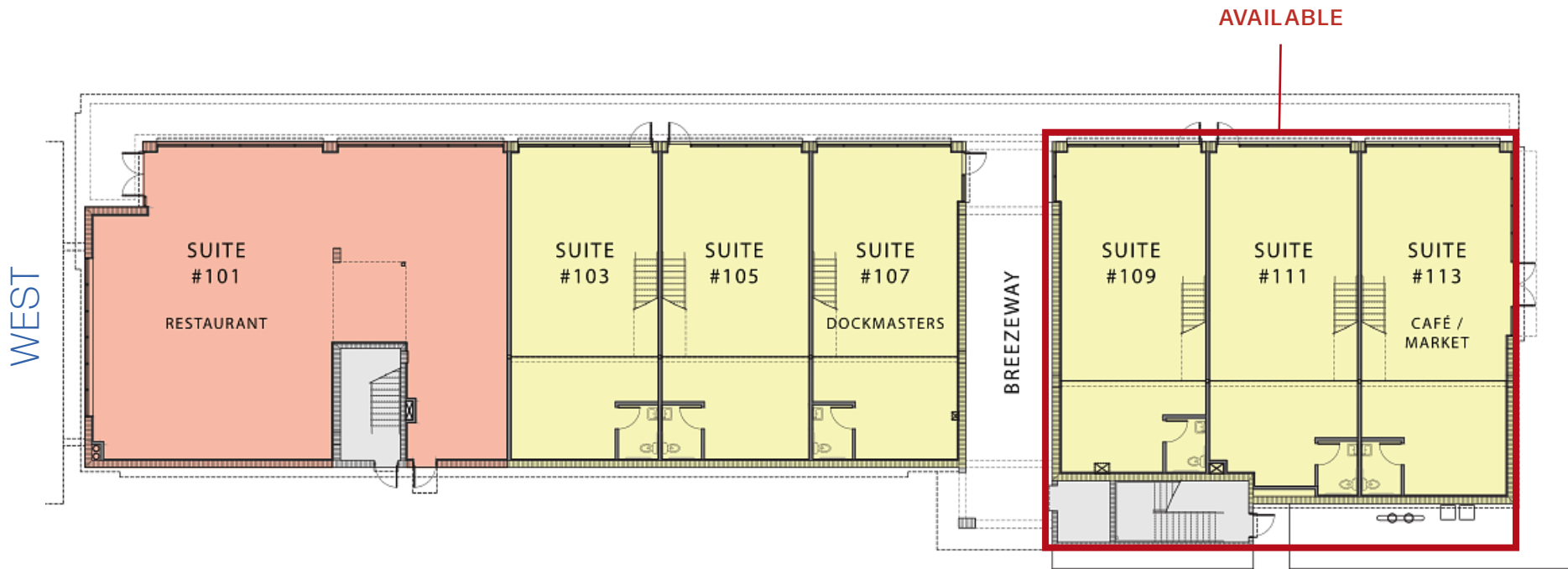
In partnership with the City of Fort Lauderdale, the Las Olas Marina is the capstone of the +\$130 million in public amenity improvements along the Las Olas Corridor connecting pedestrians to the ocean.



## FEATURES

- Office suites
- Retail Suites available
- Mega yacht marina
- Luxury amenities
- 66 boat slips
- Join nationally acclaimed Cameron Mitchell's Ocean Prime
- Waterfront promenade
- Critical component of Fort Lauderdale Boat Show
- Incredible signage opportunities

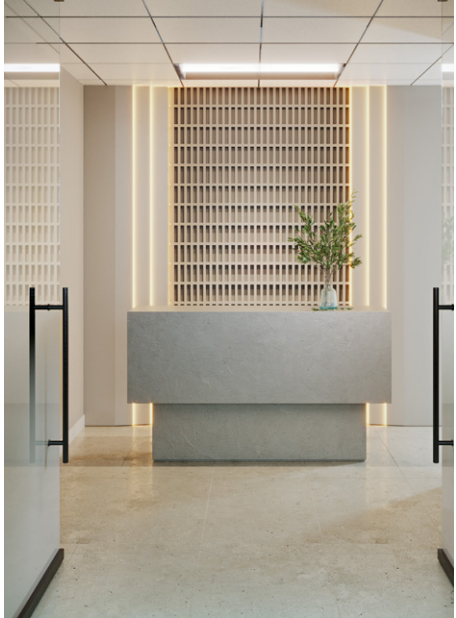
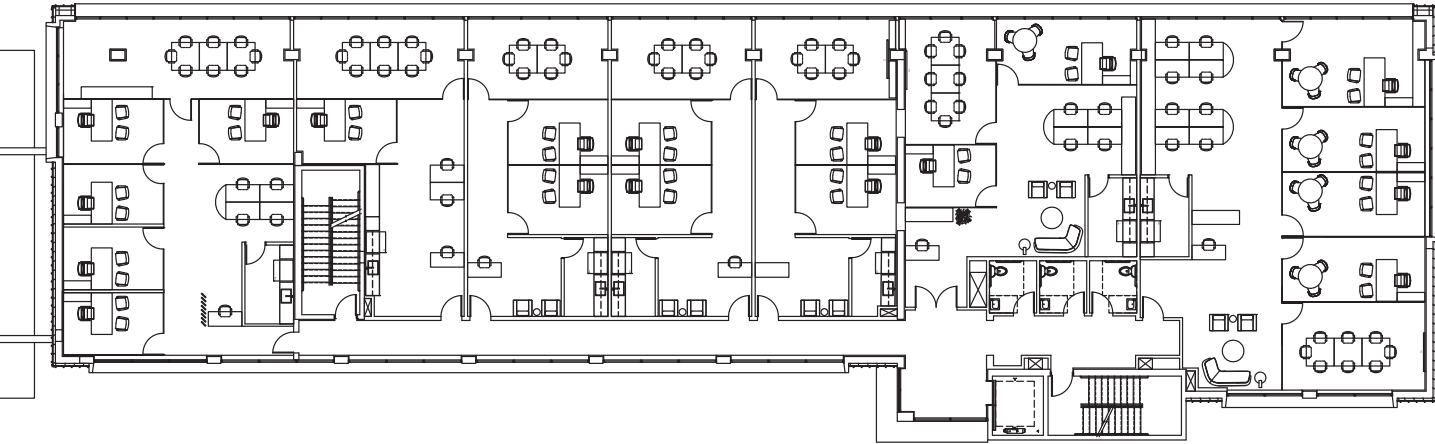
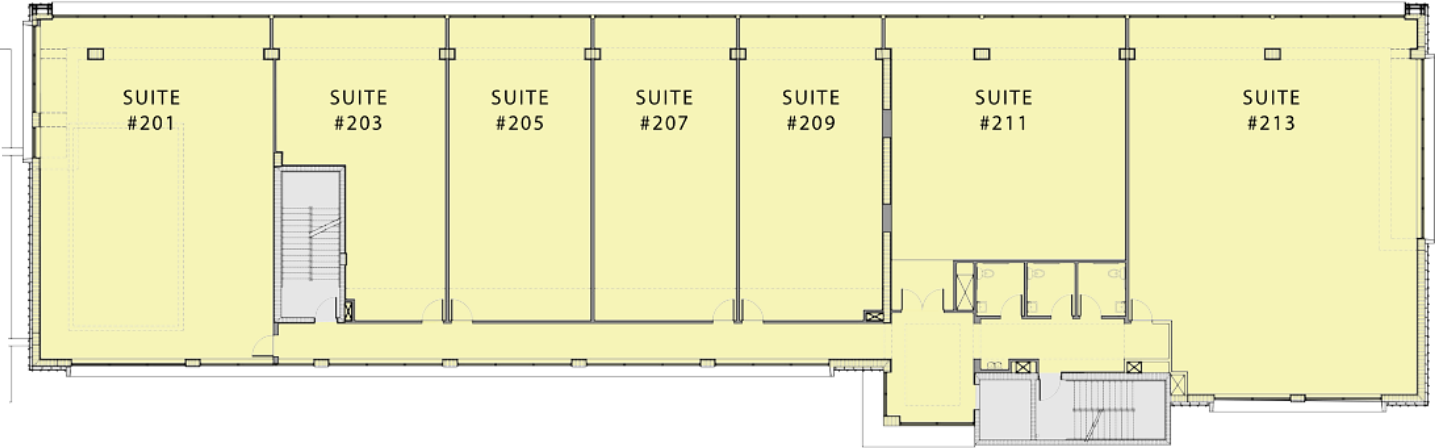
# FIRST FLOOR RETAIL PLAN



SUITE NUMBER	APPROX. RSF
101	3,084
103	1,608
105	1,608
107	1,608
109	1,602
111	1,720
113	1,753



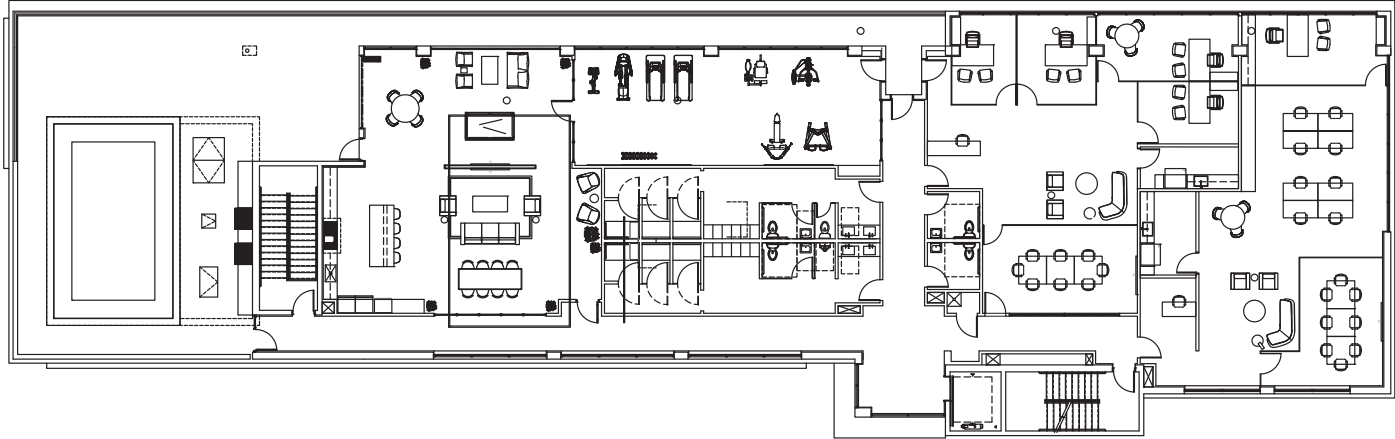
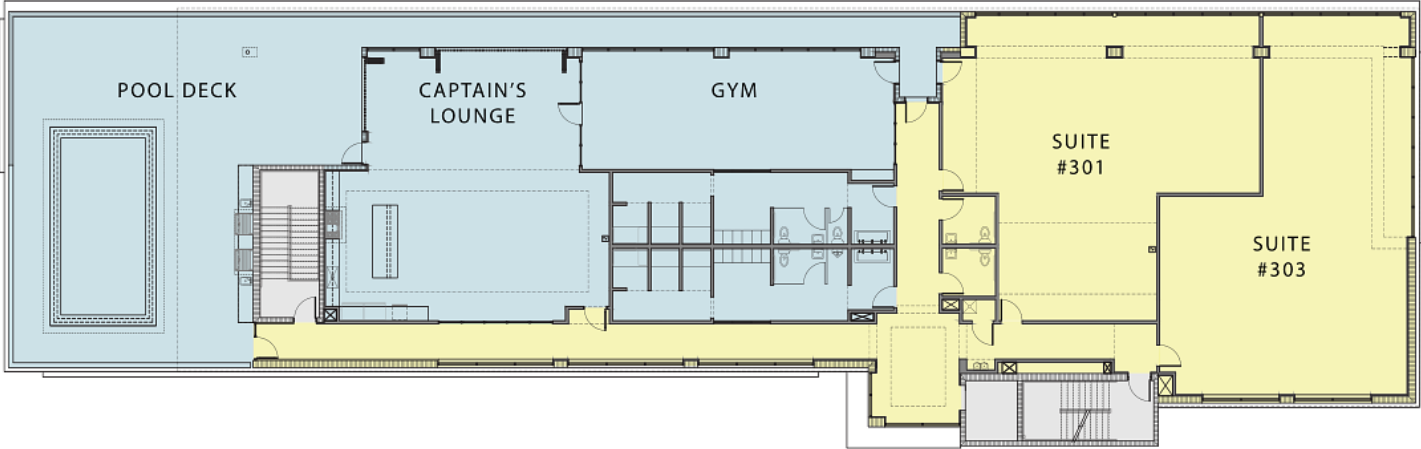
# SECOND FLOOR OFFICE PLAN



SUITE NUMBER	APPROX. RSF
201	2,185
203	1,056
205	1,123
207	1,123
209	1,122
211	1,491
213	2,857

# THIRD FLOOR OFFICE PLAN

**FULLY LEASED**



SUITE NUMBER	APPROX. RSF
301	1,911
303	1,927



# LEASING TEAM

---



## **KIMBERLY BARBAR** Senior Vice President, Stiles

Kimberly Barbar is a Senior Vice President of Stiles. Since joining Stiles in 2007, Ms. Barbar has advised corporate clients on relocations, family offices on investment opportunities, site selection for Fortune 100 companies, development clients on off-market acquisition opportunities and assemblages, and identified suitable leasing options for local, national and multi-national companies. She has represented clients on acquisitions, dispositions, financing, development and construction; sales and leasing of commercial sites, shopping centers and out parcel development; properties acquired from governmental entities for private development; and conversions of residential apartments into commercial condominium projects.

Prior to joining Stiles, Ms. Barbar practiced for nearly 20 years as a business lawyer with broad experience in commercial real estate and corporate transactions, counseling clients over the years on complex business and legal issues.

Throughout her career, Ms. Barbar has represented such clients as:

- |  |                             |
|--|-----------------------------|
| BB&T                                       | Lend Lease Corporation      |
| BankAtlantic                               | Lennar                      |
| BBX Capital                                | Nipro Diagnostics           |
| Benihana                                   | Office Depot                |
| CDB Aviation Americas                      | Rossmeyer's Harley Davidson |
| ChildNet                                   | Scott Paper Company         |
| Cleveland Clinic Florida                   | Sunbeam Corporation         |
| Columbia HCA                               | Sun Trust Bank              |
| Eckerd Corporation (now Rite Aid)          | TIAA/CREF                   |
| General Electric Capital Aviation Services | Toll Brothers, Inc.         |
| Hyatt Corporation                          | Walgreens                   |

Ms. Barbar also has represented lenders in commercial aircraft transactions, including domestic and cross-border aircraft and aircraft engine operating leases, lease restructuring and aircraft finance leasing through her relationship with General Electric Capital Aviation Services (GECAS), working full-time in GECAS's offices "hands on" in GECAS's commercial aircraft financing business.

### **Education**

Juris Doctor from University of Miami School of Law

Bachelor's Degree in Psychology and Political Science from Auburn University

### **Associations**

Florida Bar (Real Property, Probate and Trust Law Section)

Phi Alpha Delta Law Fraternity

Past President and current Member of the Board of Directors of the University of Miami Miller School of Medicine Women's Health Forum

Past President Junior Welfare Society

Ambassador for The Pantry of Broward County, Florida

Deacon, Real Estate Advisory Board Member, First Presbyterian Church of Fort Lauderdale



**Offered By**

Kimberly Barbar  
Senior Vice President  
Stiles  
Tel. 954-918-7716  
[kimberly.barbar@stiles.com](mailto:kimberly.barbar@stiles.com)