

Office Sublease Available at Civic View Corporate Centre

savills

FOR SUBLEASE 300 Rancheros Drive, Suite 150, San Marcos, CA 92069



SPACE PROFILE

4,805 SF

Total SF

Negotiable

Term

Available

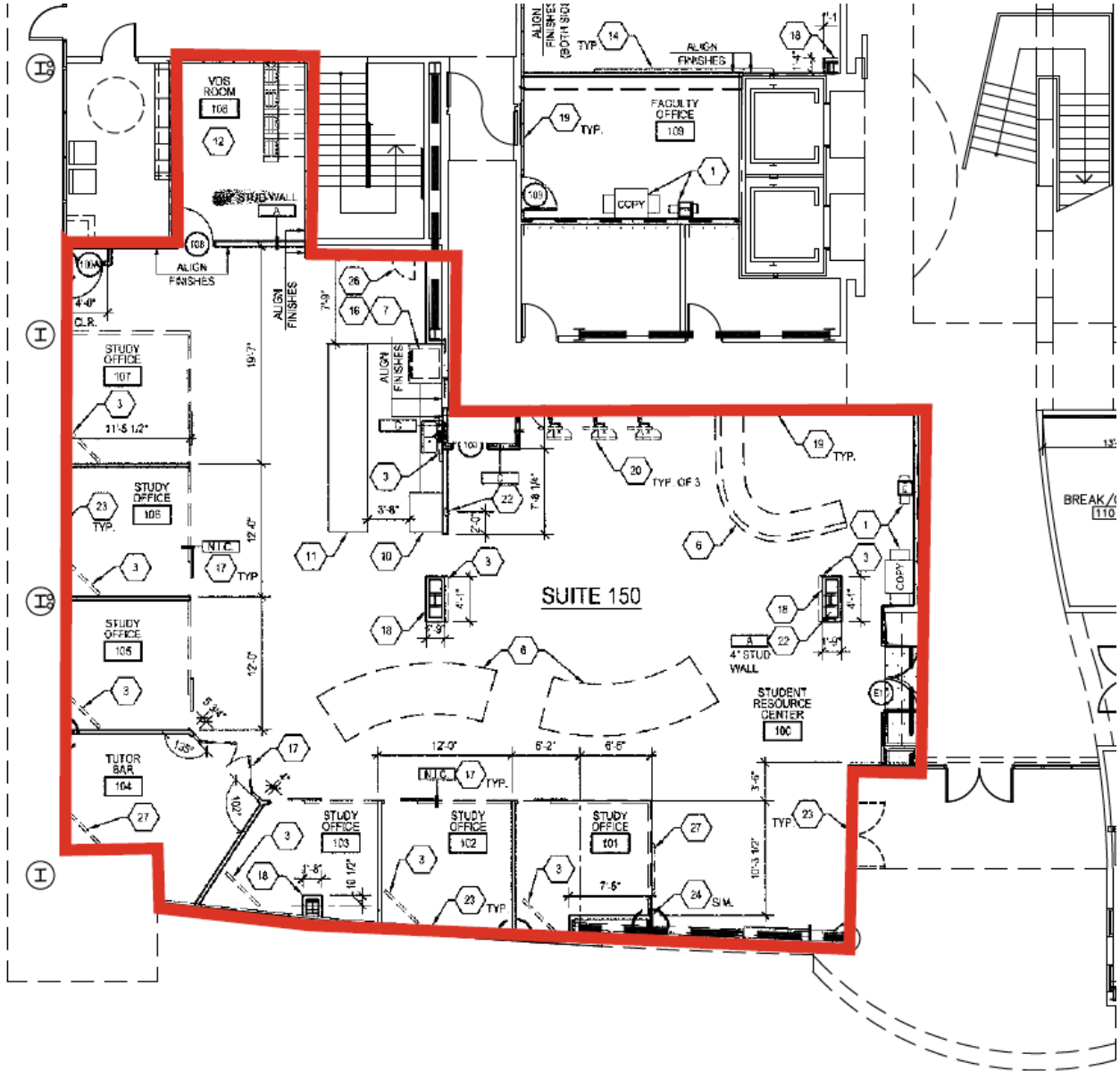
Furniture

Negotiable

Rental rate

Immediate

Availability





Shane Poppen

+1 858 354 9435
spoppen@savills.us
License #01701190

Louis Bickett

+1 858 255 9690
lbickett@savills.us
License #02197721

Jeffrey Jackson

+1 619 300 3387
jcjackson@savills.us
License #02249215



© 2024 Savills. All rights reserved. The information contained in this communication has been obtained from a variety of sources believed to be reliable but has not been verified. NO WARRANTY OR REPRESENTATION, EXPRESS OR IMPLIED, IS MADE AS TO THE CONDITION OF THE PROPERTY OR ACCURACY OR COMPLETENESS OF THE INFORMATION CONTAINED HEREIN AND SAME IS SUBMITTED SUBJECT TO ERRORS, OMISSIONS, CHANGE OF PRICE, RENTAL OR OTHER CONDITIONS, WITHDRAWAL WITHOUT NOTICE AND TO ANY SPECIFIC CONDITIONS IMPOSED BY THE PROPERTY OWNER OR LESSOR.