

FOR LEASE

765 Straits Turnpike, Middlebury, CT 06762

MATTHEWS COMMERCIAL PROPERTIES

MEDICAL / PROFESSIONAL OFFICE BUILDING



- **32,708 SF building located off of I-84 Exit 17**
- **2 Story Building with Elevator**
- **Located within multiple retail, medical and professional offices**
- **Traffic Count: 13,000 vehicles daily**
- **Lease Rate: \$19.95 Gross plus Utilities**

EXCLUSIVELY LISTED BY:

MATTHEWS COMMERCIAL PROPERTIES

matthewscommercial.com

GERRY D. MATTHEWS

203.753.5800 / matthewscre@gmail.com

FOR LEASE

765 Straits Turnpike, Middlebury, CT 06762

MATTHEWS COMMERCIAL PROPERTIES



BUILDING		MECHANICALS	
Total SF	32,708 SF+/-	Heat Source/ Type	Yes
Number of Floors	2	Air Conditioning	Yes
Available SF	13,282 SF+/-	Sprinklered	Yes - Wet
Will Subdivide	Yes	Elevator	Yes - 2 Stops
Exterior Construction	Stucco /Drive-It	LAND	
Interior Construction	Sheetrock	Total Avail/acres	10.46
Ceiling Height	10' Finished	Zoning	CA 40
Roof	Rubber	Parking	4 / 1000 (125)
Date Built	2003	Lease Rate	\$19.95 PSF Gross plus Utilities
UTILITIES			
Sewer	Town		
Water	Town		
Gas	Eversource		
Electrical	Eversource		

CONTACT: GERRY MATTHEWS 203-753-5800

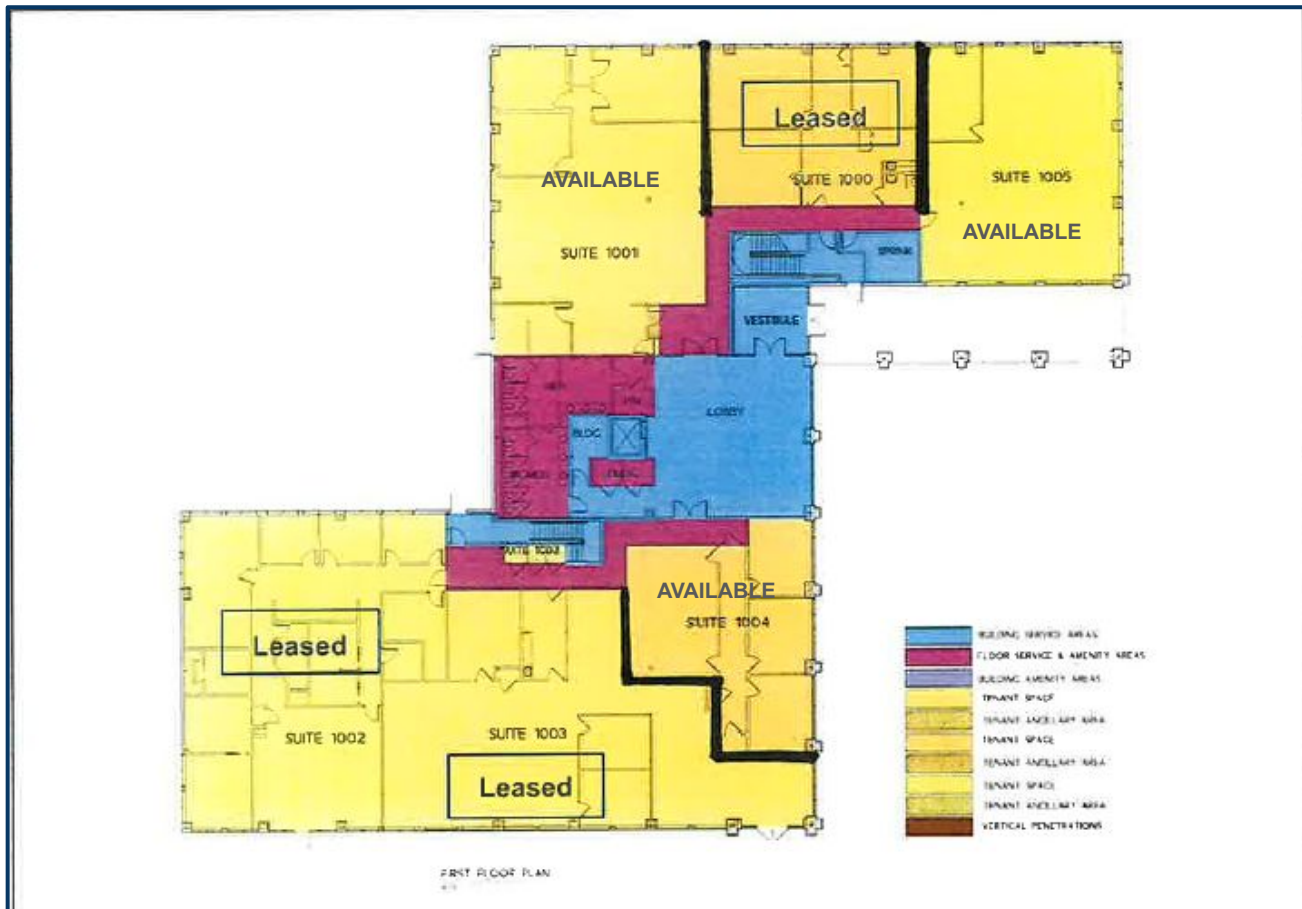
MATTHEWS COMMERCIAL PROPERTIES LLC
819 Straits Tpke, Suite 3B
Middlebury, CT 06762
matthewscommercial.com

FOR LEASE

765 Straits Turnpike, Middlebury, CT 06762

MATTHEWS COMMERCIAL PROPERTIES

1ST FLOOR



FIRST FLOOR:

SUITE #	SF+/-
• Suite 1000	Leased
• Suite 1001	2,816
• Suite 1002 (inc storage by stairs)	Leased
• Suite 1003	Leased
• Suite 1004	1,483
• Suite 1005	2,124

MATTHEWS COMMERCIAL PROPERTIES LLC
819 Straits Tpke, Suite 3B
Middlebury, CT 06762
matthewscommercial.com

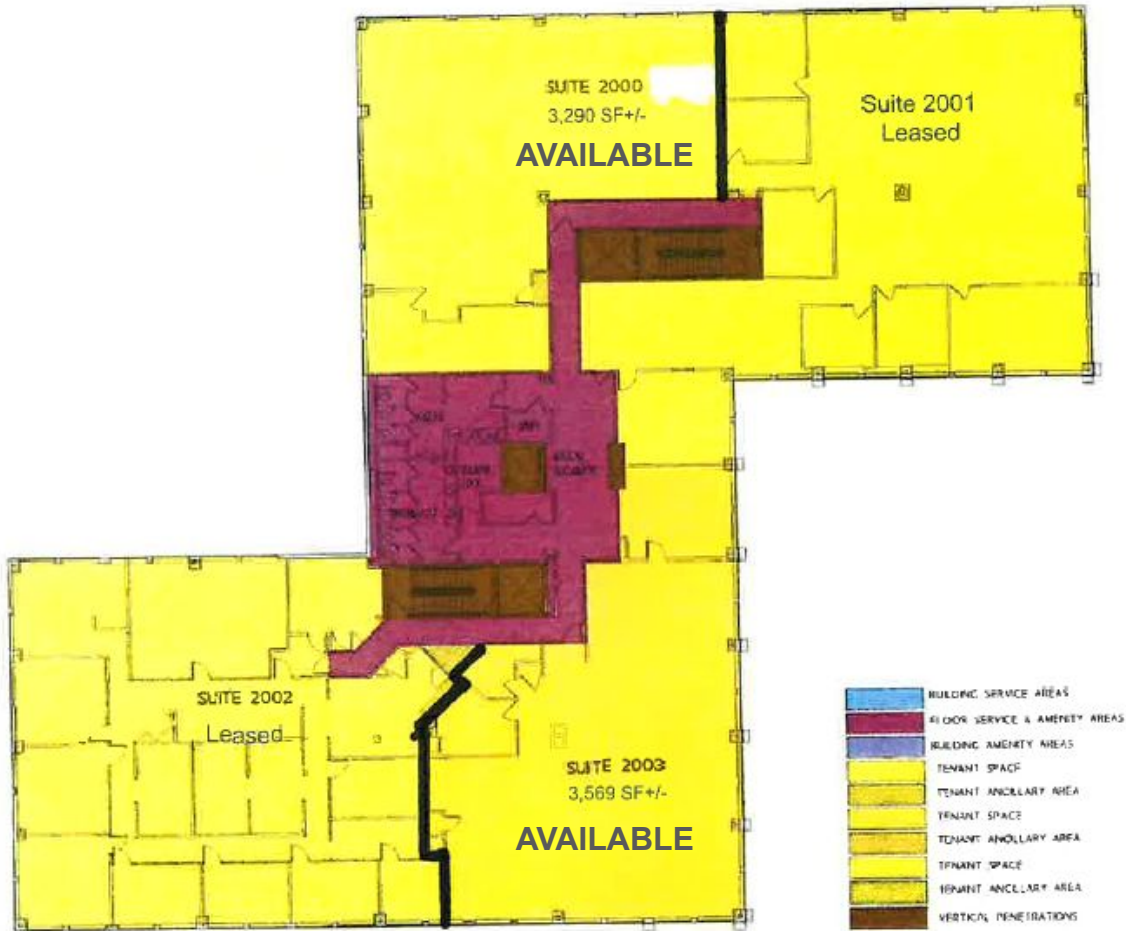
CONTACT: GERRY MATTHEWS 203-753-5800

FOR LEASE

765 Straits Turnpike, Middlebury, CT 06762

MATTHEWS COMMERCIAL PROPERTIES

2ND FLOOR



SECOND FLOOR PLAN

SECOND FLOOR

<u>SUITE #</u>	<u>SF +/-</u>
• Suite 2000	3,290
• Suite 2001	Leased
• Suite 2002	Leased
• Suite 2003	3,569

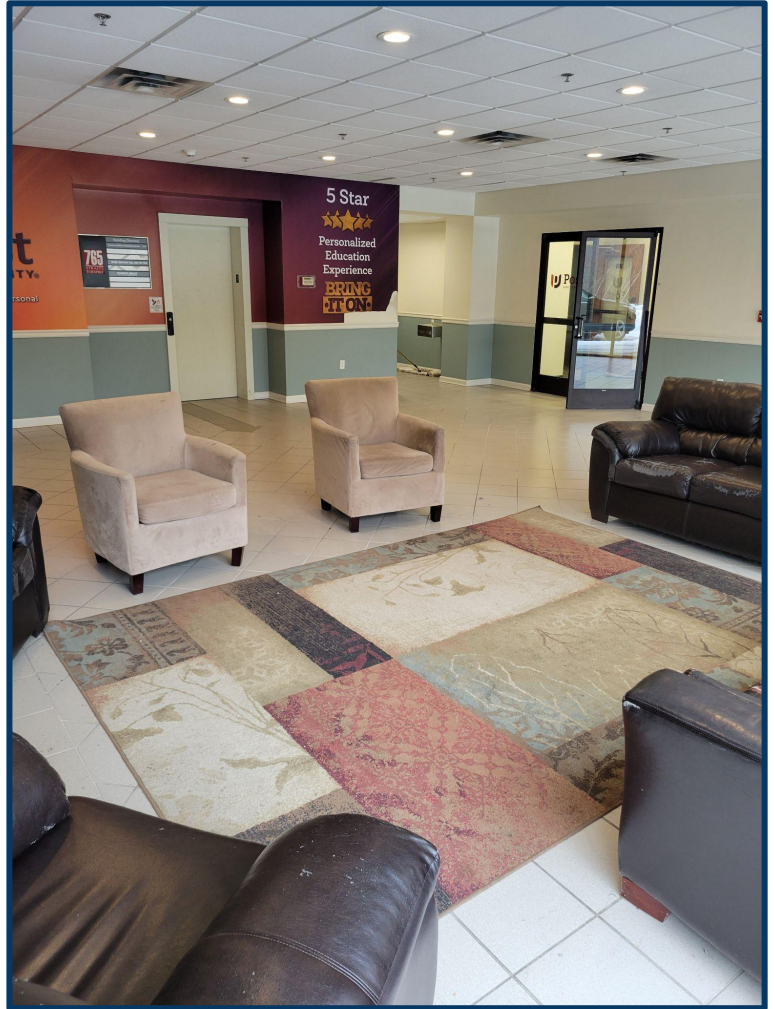
MATTHEWS COMMERCIAL PROPERTIES LLC
819 Straits Tpke, Suite 3B
Middlebury, CT 06762
matthewscommercial.com

CONTACT: GERRY MATTHEWS 203-753-5800

FOR LEASE

765 Straits Turnpike, Middlebury, CT 06762

MATTHEWS COMMERCIAL PROPERTIES



CONTACT: GERRY MATTHEWS 203-753-5800

MATTHEWS COMMERCIAL PROPERTIES LLC
819 Straits Tpke, Suite 3B
Middlebury, CT 06762
matthewscommercial.com

FOR LEASE

765 Straits Turnpike, Middlebury, CT 06762

MATTHEWS COMMERCIAL PROPERTIES



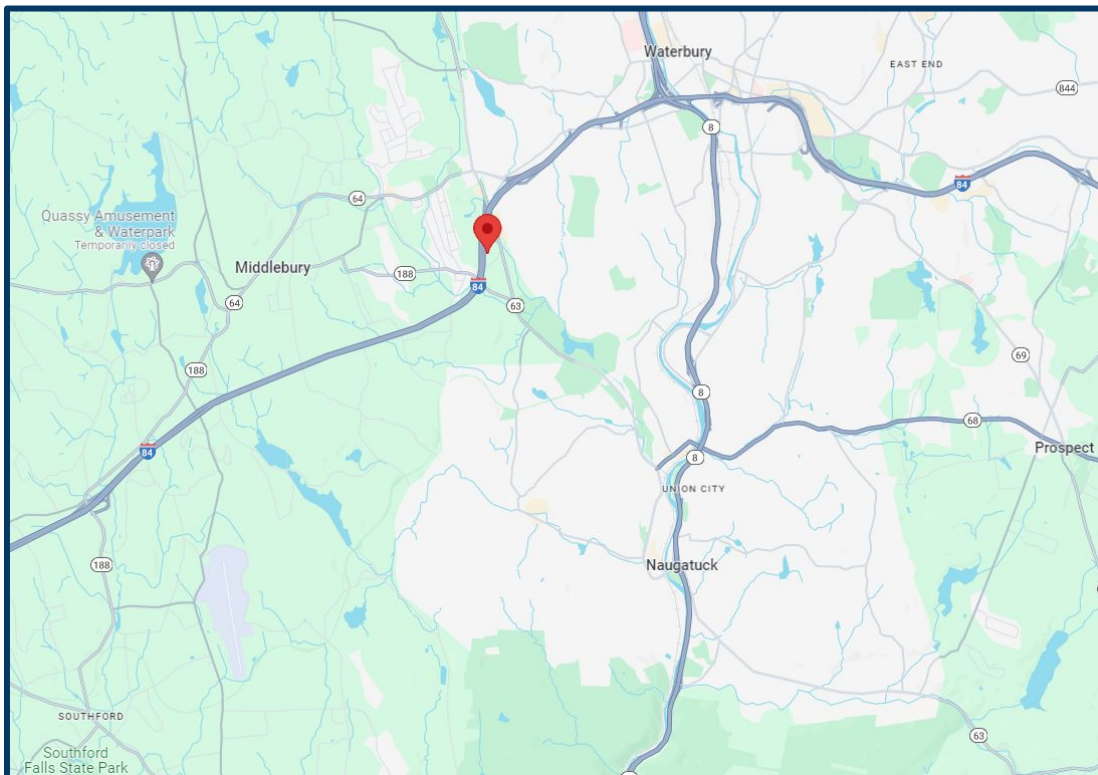
CONTACT: GERRY MATTHEWS 203-753-5800

MATTHEWS COMMERCIAL PROPERTIES LLC
819 Straits Tpke, Suite 3B
Middlebury, CT 06762
matthewscommercial.com

FOR LEASE

765 Straits Turnpike, Middlebury, CT 06762

MATTHEWS COMMERCIAL PROPERTIES



CONTACT: GERRY MATTHEWS 203-753-5800

MATTHEWS COMMERCIAL PROPERTIES LLC
819 Straits Tpke, Suite 3B
Middlebury, CT 06762
matthewscommercial.com