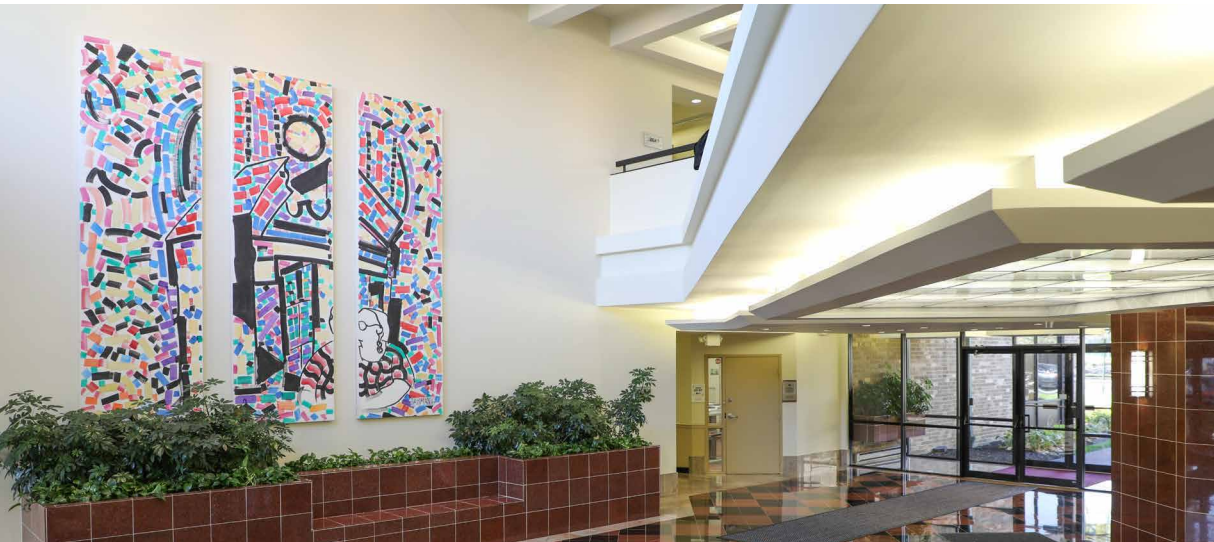


# FOR LEASE

BALTIMORE COUNTY, MD

# 3104-3106 LORD BALTIMORE DR

EXECUTIVE PARK WEST | 3100-3300 LORD BALTIMORE DRIVE | WINDSOR MILL, MD 21244



## PROPERTY HIGHLIGHTS:

- ▶ NEW FITNESS CENTER AND CONFERENCE ROOM
- ▶ TWELVE BUILDINGS CONSISTING OF 450,000 SF IN A GATED 30-ACRE BUSINESS PARK
- ▶ ON-SITE DAYCARE AND RESTAURANT
- ▶ WITHIN 3 MILES OF SOCIAL SECURITY ADMINISTRATION HEADQUARTERS AND CENTERS FOR MEDICARE AND MEDICAID SERVICES
- ▶ WITHIN 2 MILES OF BELTWAY EXIT 17 AT SECURITY BOULEVARD AND 1 MILE OF BELTWAY EXIT 18 AT LIBERTY ROAD

**DAVID S. BROWN**  
ENTERPRISES, LTD.

**KEVIN KEANE | SVP, OFFICE LEASING**  
410.581.2519 | KEVIN@DAVIDSBROWN.COM

**BRENT MANGUM | VP, OFFICE LEASING**  
410.581.2518 | BRENT@DAVIDSBROWN.COM

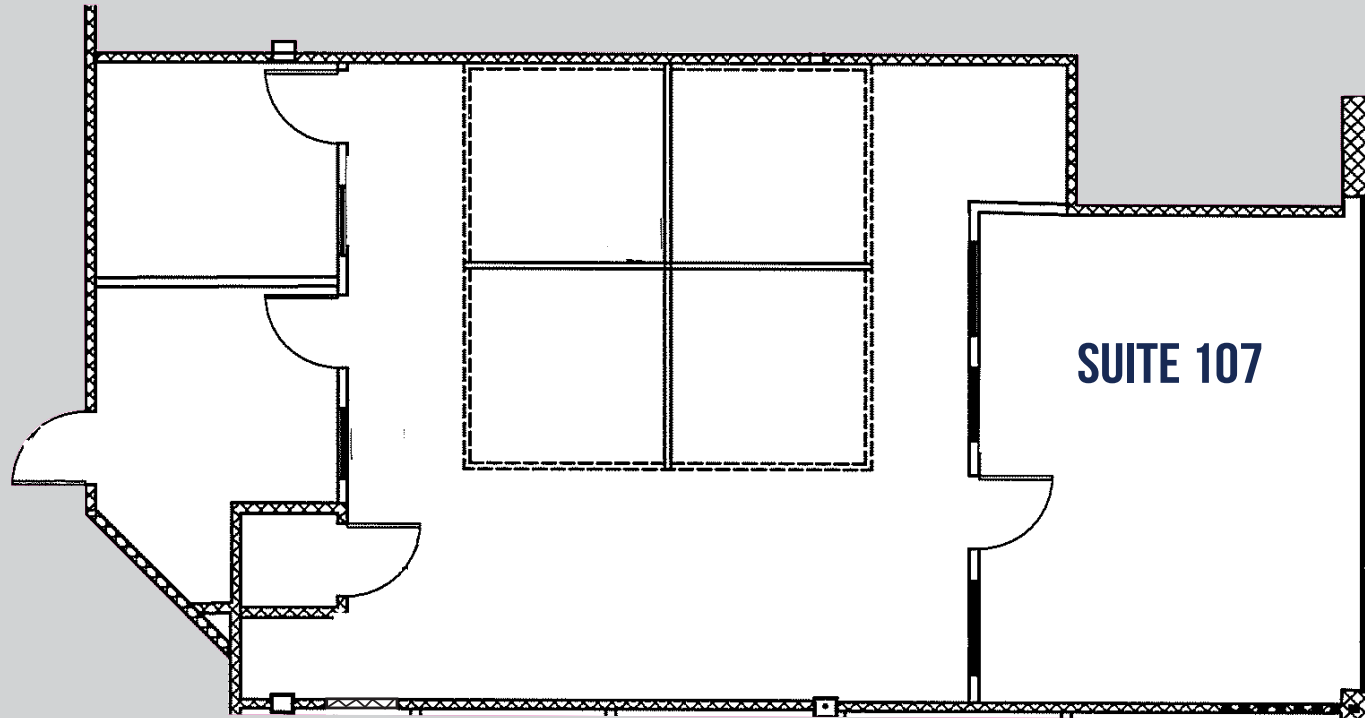
**NOAH ADLER | LEASING ASSOCIATE**  
410.581.2510 | NADLER@DAVIDSBROWN.COM

# FOR LEASE

BALTIMORE COUNTY, MD

# 3104 LORD BALTIMORE DR

EXECUTIVE PARK WEST | 3100-3300 LORD BALTIMORE DRIVE | WINDSOR MILL, MD 21244



AVAILABLE

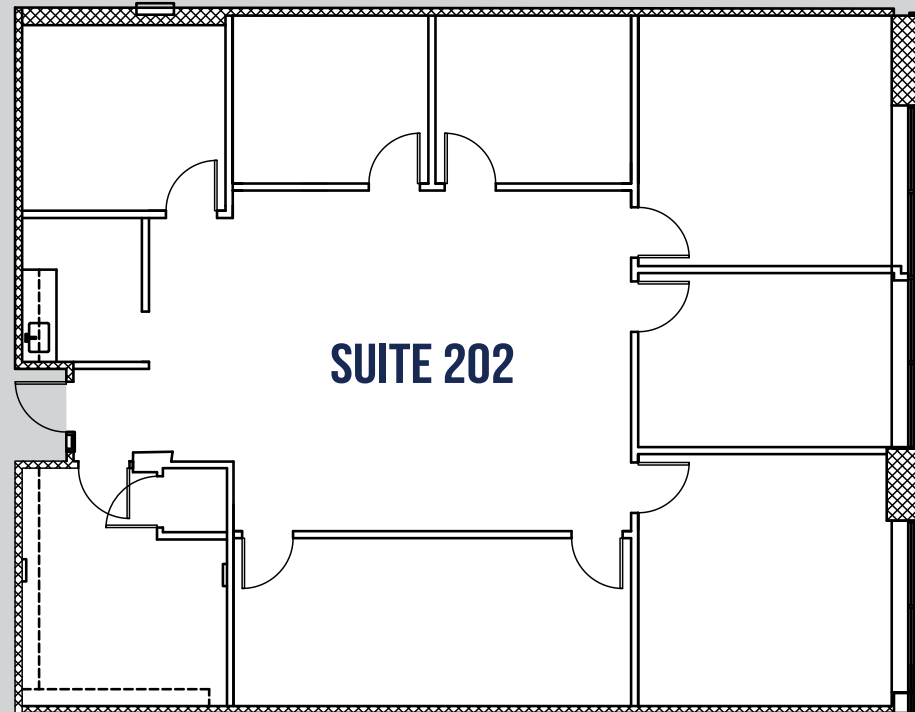
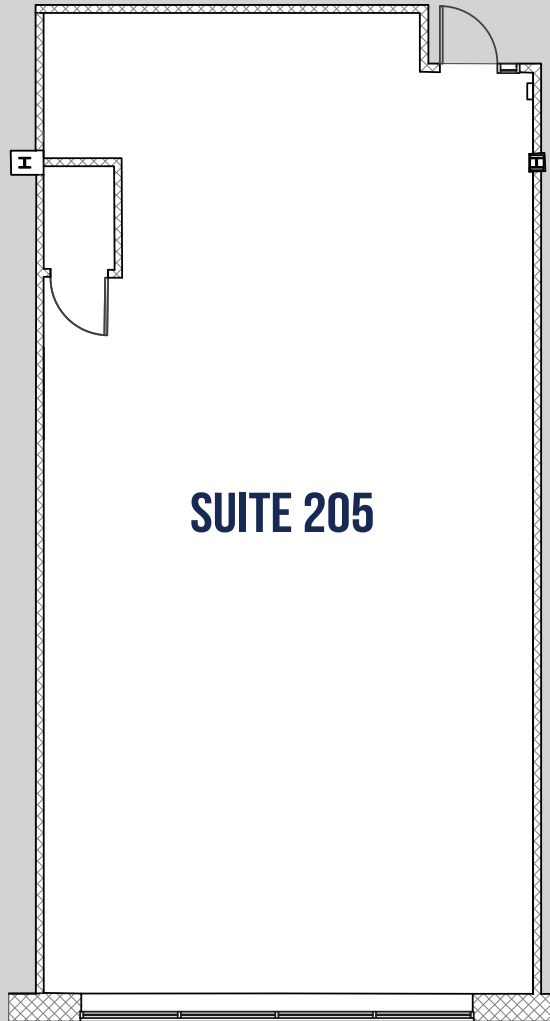
▶ SUITE 107 - 1,317 SF

# FOR LEASE

**B** BALTIMORE COUNTY, MD

# 3104 LORD BALTIMORE DR

EXECUTIVE PARK WEST | 3100-3300 LORD BALTIMORE DRIVE | WINDSOR MILL, MD 21244



## AVAILABLE

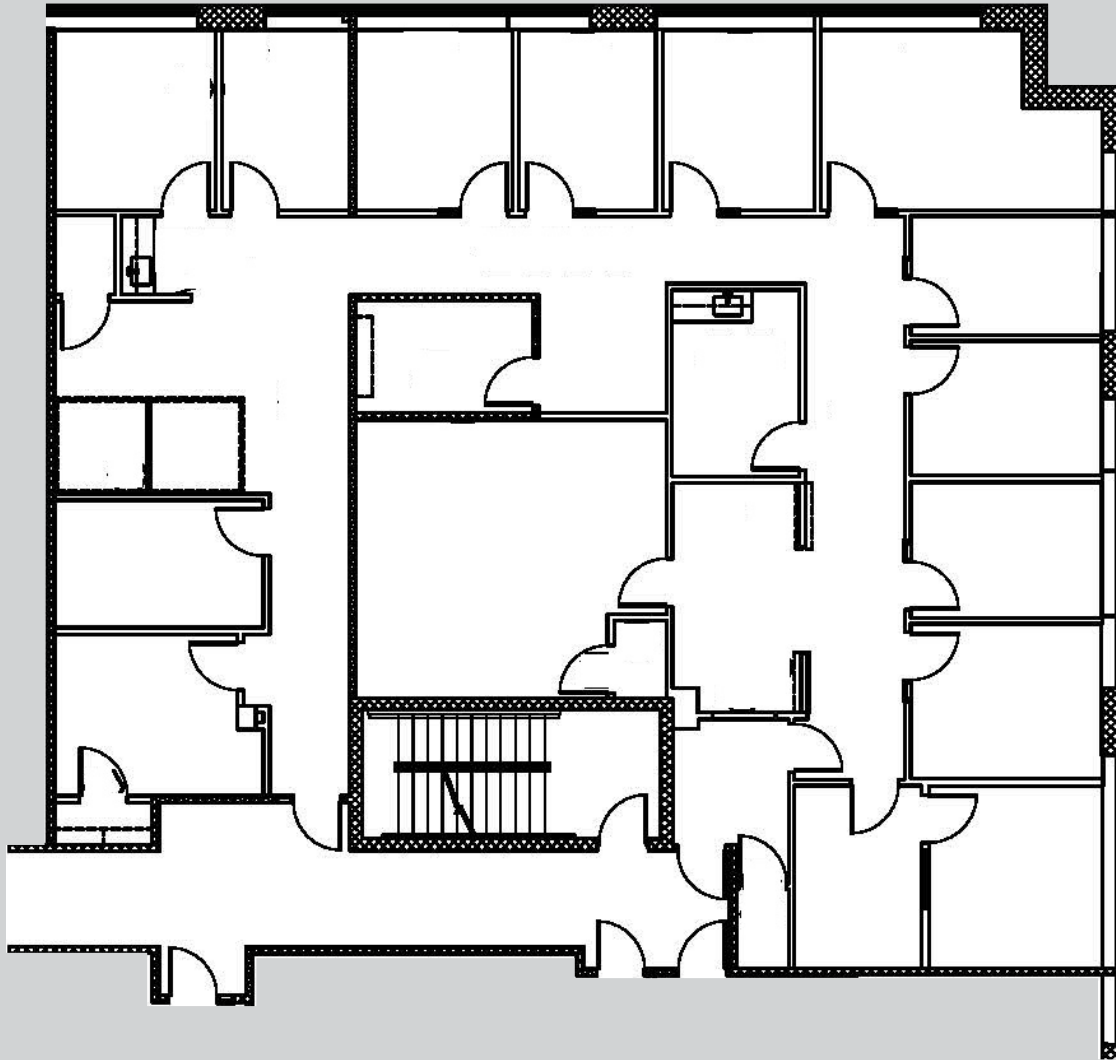
- ▶ SUITE 202 - 2,202 SF
- ▶ SUITE 205 - 1,375 SF

# FOR LEASE

BALTIMORE COUNTY, MD

# 3104 LORD BALTIMORE DR

EXECUTIVE PARK WEST | 3100-3300 LORD BALTIMORE DRIVE | WINDSOR MILL, MD 21244



AVAILABLE

► SUITES 204 & 206 - 3,592 SF

# FOR LEASE

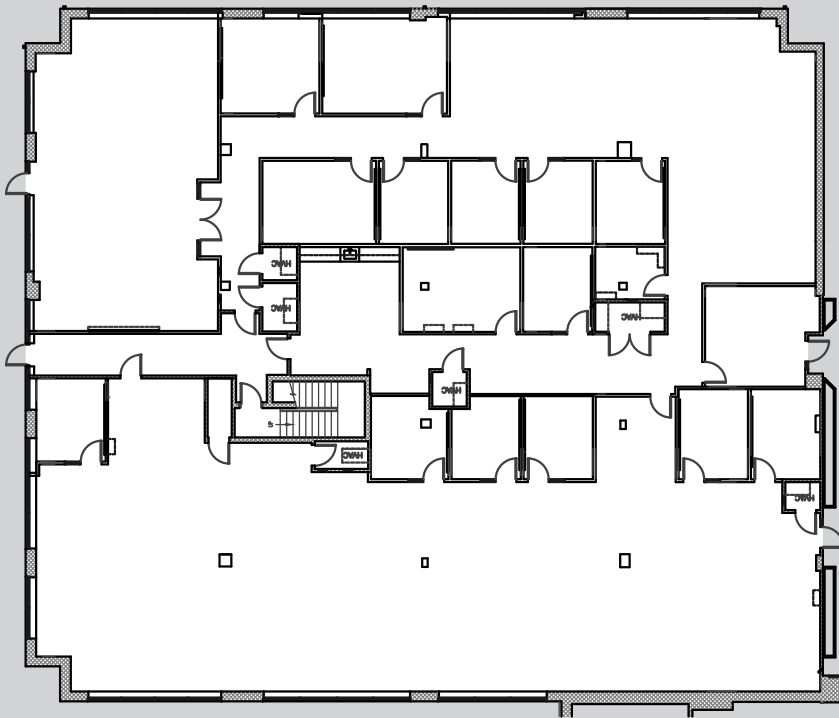
BALTIMORE COUNTY, MD

# 3106 LORD BALTIMORE DR

EXECUTIVE PARK WEST | 3100-3300 LORD BALTIMORE DRIVE | WINDSOR MILL, MD 21244

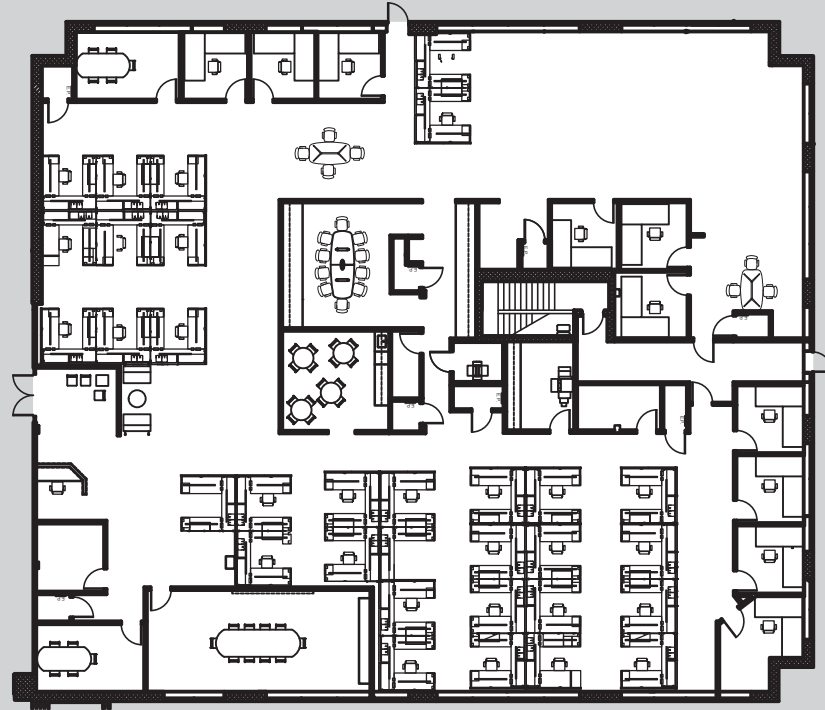
SUITE 100-106 VIRTUAL TOUR ▶

SUITE 100-106



SUITE 110 VIRTUAL TOUR ▶

SUITE 110



## AVAILABLE

- ▶ SUITE 100-106: 11,076 SF
- ▶ SUITE 110: 11,049 SF

# FOR LEASE

BALTIMORE COUNTY, MD

# 3106 LORD BALTIMORE DR

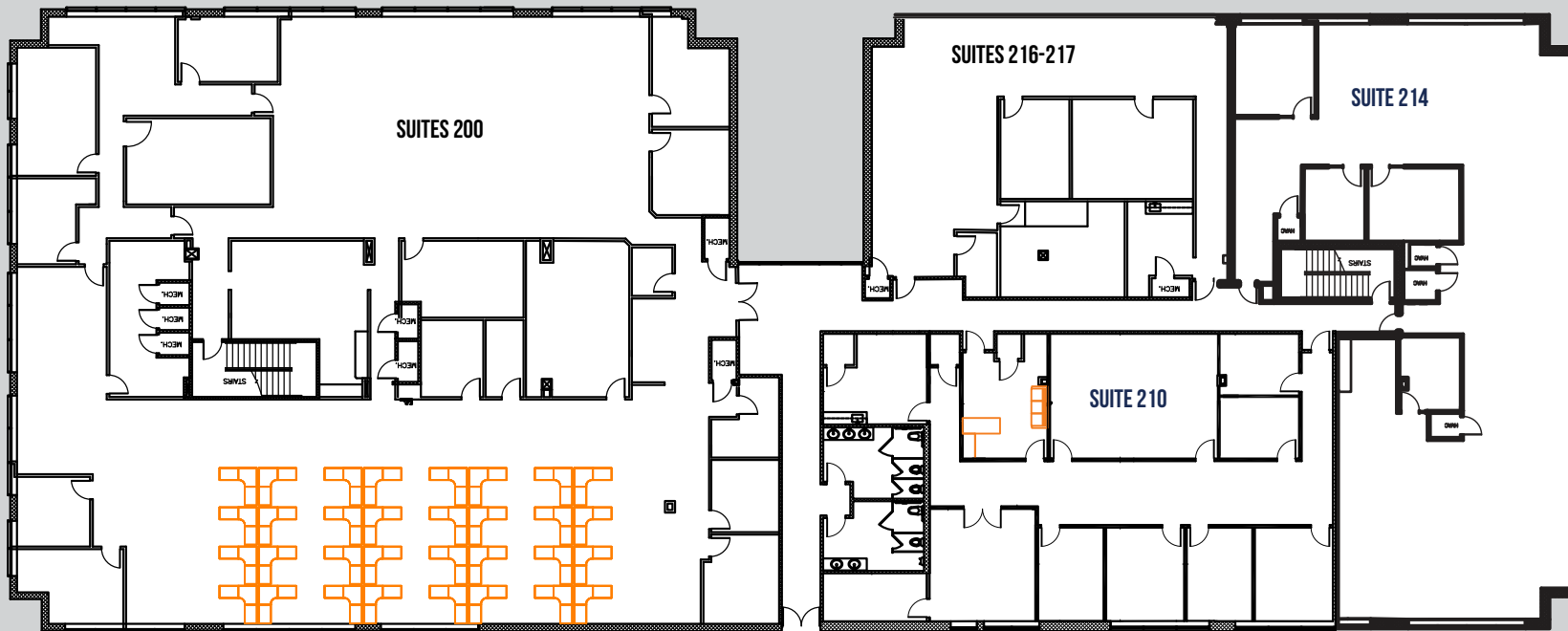
EXECUTIVE PARK WEST | 3100-3300 LORD BALTIMORE DRIVE | WINDSOR MILL, MD 21244

SUITE 210 VIRTUAL TOUR ▶

SUITE 214 VIRTUAL TOUR ▶

## AVAILABLE

- ▶ SUITE 200: 11,701 SF
- ▶ SUITE 210: 3,543 SF
- ▶ SUITE 214: 4,526 SF
- ▶ SUITE 216-217: 2,705 SF



# 3104-3106 LORD BALTIMORE DR

EXECUTIVE PARK WEST | 3100-3300 LORD BALTIMORE DRIVE | WINDSOR MILL, MD 21244

# MAP



## DISTANCE TO:

CMS: 2 Miles  
SSA: 3 Miles  
BWI: 15 Miles  
I-695 & I-70 Interchange: 3 Miles