

# For Lease

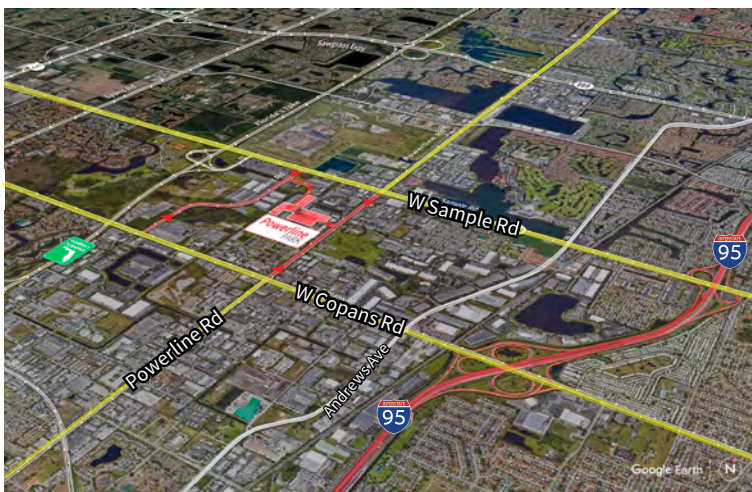
**Powerline Park**  
3000 NW 25<sup>th</sup> Avenue  
Pompano Beach, FL 33069



**Industrial Space For Lease**  
**5,940 SF**

## Powerline Park

3000 NW 25<sup>th</sup> Avenue, Pompano Beach, FL 33069



### Location

- Easy access off Sample Road and Powerline Road
- Excellent access to I-95 and the Florida Turnpike
- Equidistant to Fort Lauderdale/Hollywood International Airport and Palm Beach International Airport

### Space Features

- 5,940 SF total
- 825 SF of new spec office
- 5,115 SF of warehouse
- 16' clear height
- Two (2) grade level doors
- Parking ratio: 2.0/1,000 sf



© 2025 Jones Lang LaSalle IP, Inc.

**Peter Johnston**  
M +1 954 980 3224  
peter.johnston@jll.com

**Yuri Quispe**  
M +1 772 201 5305  
yuri.quispe@jll.com

**Peter Sheridan**  
M +1 954 439 4941  
peter.sheridan@jll.com



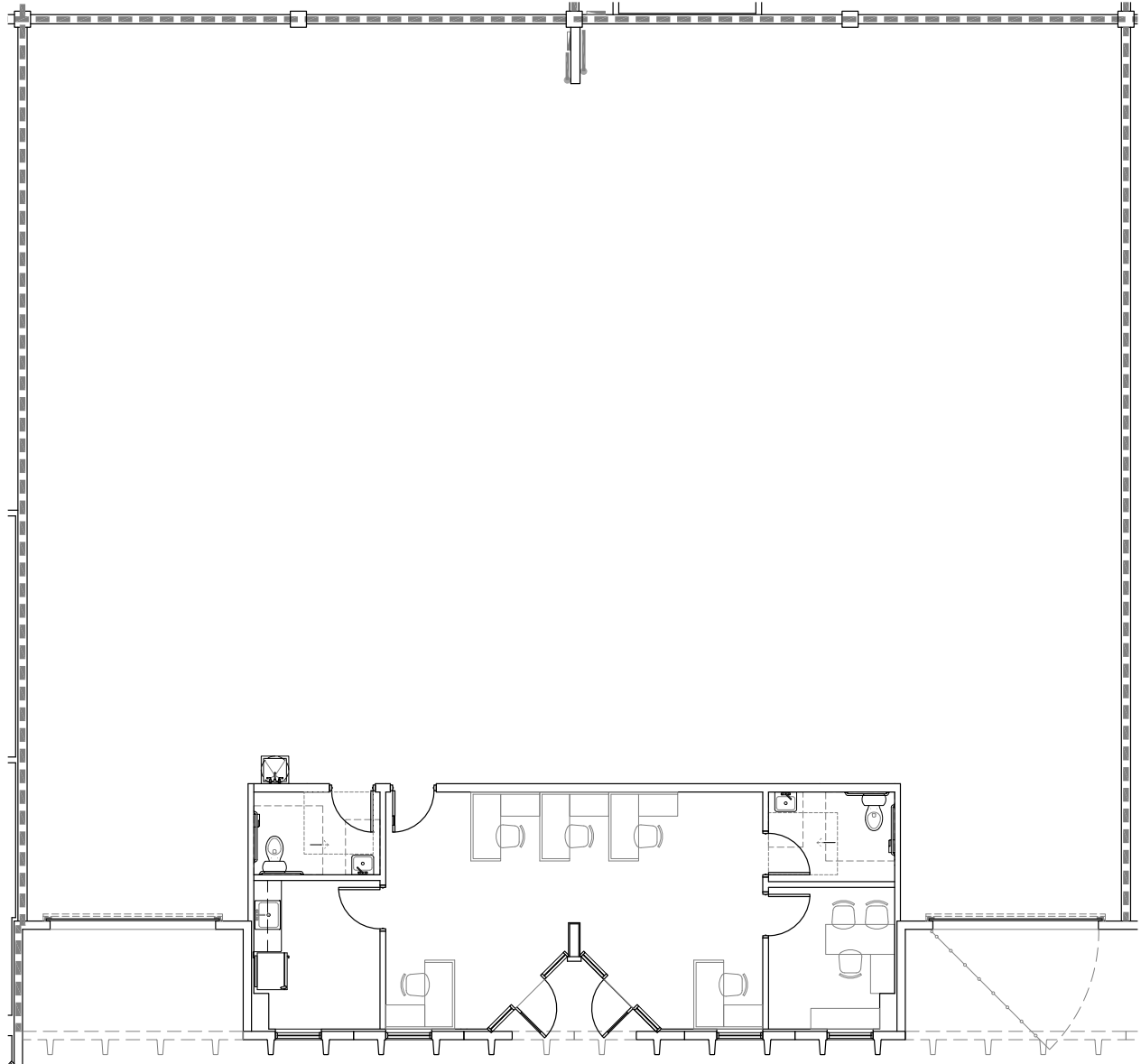
# For Lease

# Powerline Park

3000 NW 25<sup>th</sup> Avenue, Pompano Beach, FL 33069

## Powerline Park Spec Floor Plan

Office: 825 SF  
Warehouse: 5,115 SF  
Total: 5,940 SF



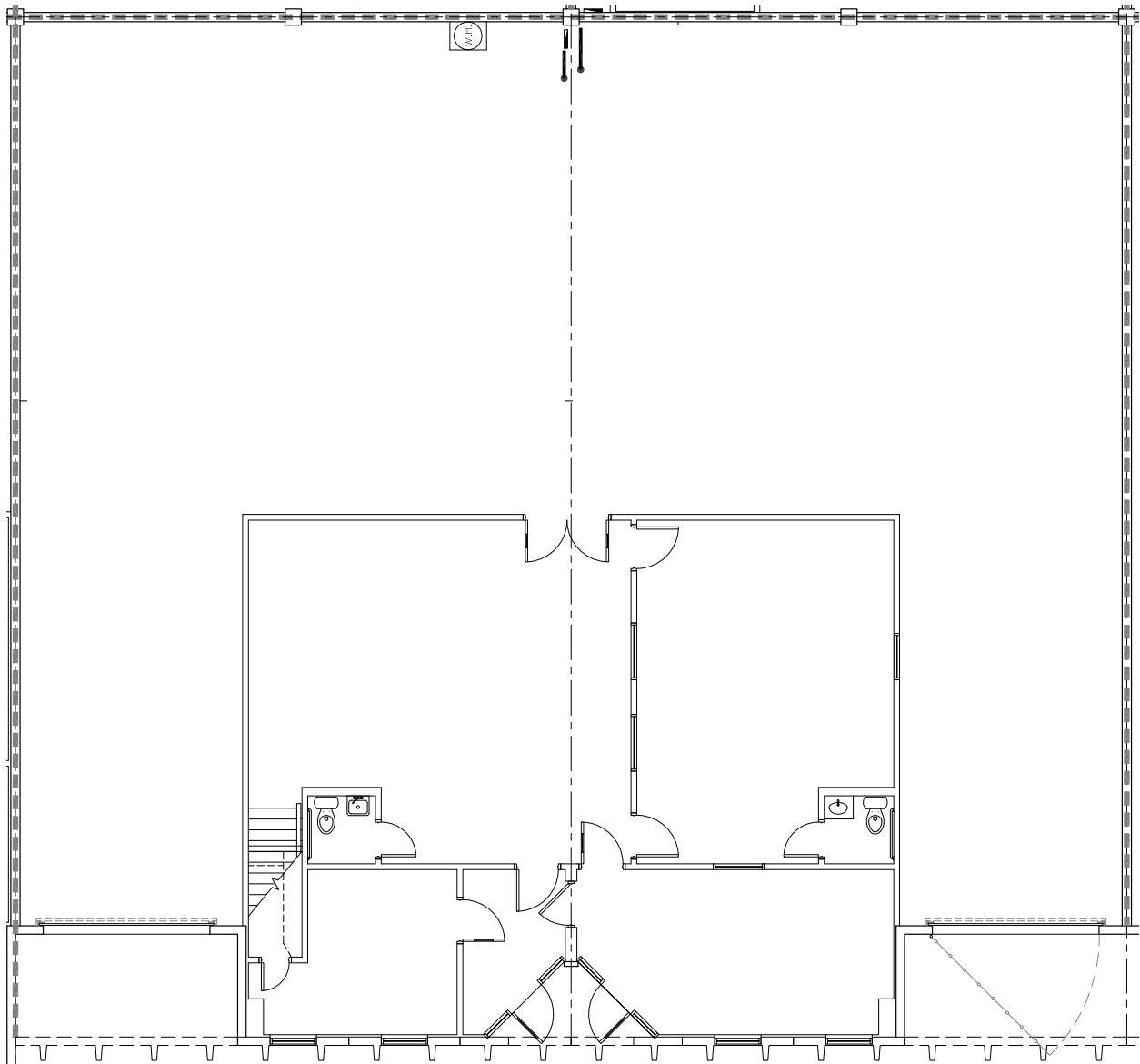
# For Lease

# Powerline Park

3000 NW 25<sup>th</sup> Avenue, Pompano Beach, FL 33069

## Powerline Park As-Is Floor Plan

Office: 1,750 SF  
Warehouse: 4,190 SF  
Total: 5,940 SF



# For Lease

## Powerline Park

3000 NW 25th Avenue, Pompano Beach, FL 33069

### Powerline Park

■ - Available Space



Building	Suite	Total (SF)	Office (SF)	Warehouse (SF)	Loading	Clear Height	Available Date
6	3000-5&7	5,940	825	5,115	2 G	16'	Now (As-Is)

