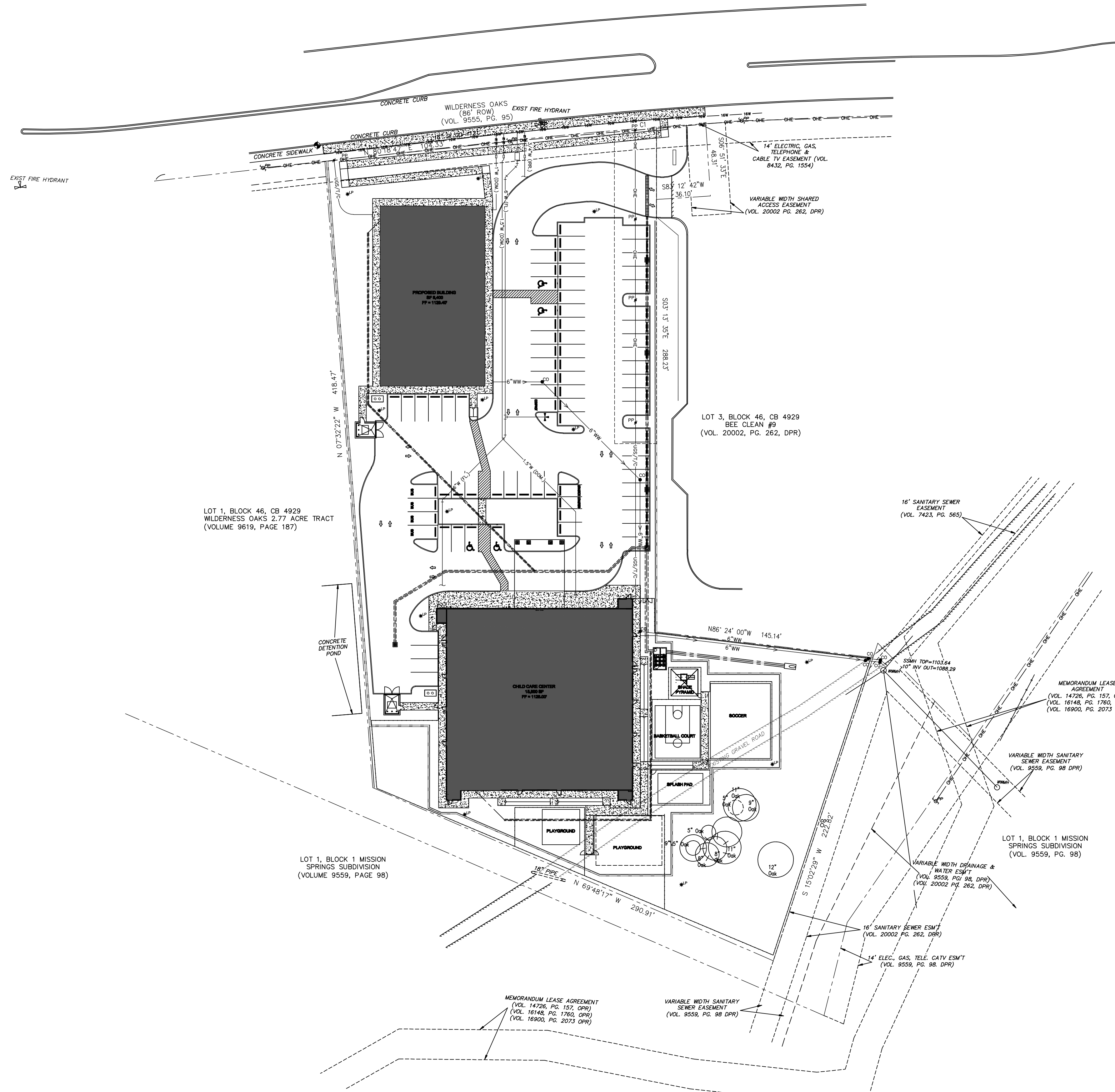


CURVE TABLE					
CURVE #	LENGTH	RADIUS	DELTA	CHORD	CHORD BEARING
C2	150.88'	3056.98'	002°49'40"	150.87'	S81°43'37"W



REVISIONS AND ISSUANCE		
NO.	DATE	DESCRIPTION
1	xx	ISSUE FOR PERMIT

IVY KIDS OF STONE OAK
24272 Wilderness Oak (Shopping Center)
24278 Wilderness Oak (Child Care Center)
San Antonio, Texas 78258

This design / drawing are the property of JCC Architect, LLC. It is unlawful to copy or extract in any form unless it is authorized by JCC Architect, LLC.

Developer
 AZEA Holdings, LLC
 shehmir9@gmail.com
 fmo@epicmedicalbilling.com

Civil Engineer
 KLove Engineering LLC
 klove@kloveengineering.com

Landscape Architect
 EVERGREEN Design Group
 Rodney@evergreendesigngroup.com

Structural Engineer
 Mission Engineering, Inc.
 dzhuang@missioneng.com

MEP Engineers
 chihai.keng@gmail.com

JCC ARCHITECT, LLC
 TX Reg. Arch No. 09305
 jc@jccarch.com

DRAWN BY	CHECKED BY
DATE	JOB NO.
08012022	stoneoak-1

DRAWING TITLE

DRAWING NO.