

PARAMUS, NJ

30 A&S DR, PARAMUS, NJ 07652



OFFERING SUMMARY

Available SF: 30,000 SF

Lease Rate: Call For Details

NEIGHBORING TENANTS



PROPERTY OVERVIEW

30,000 SF Freestanding Building

PROPERTY HIGHLIGHTS

- Available Immediately
- Former Joann Location
- Perfect for all Retail & Medical Uses
- Prime Retail Site Located in the Heart of the Route 17 Paramus Retail Shopping Area
- Large Pylon Sign on Route 17
- Strong Densely Populated Marketplace
- Adjacent to Paramus Park Mall
- Convenient Access to Route 17 and Garden State Parkway
- 137,800+ VPD

FOR MORE INFORMATION CONTACT:

CHUCK LANYARD

201.703.9700 x115
clanyard@thegoldsteingroup.com

NEIL GOLDSTEIN

201.703.9700 x112
ngoldstein@thegoldsteingroup.com



THEGOLDSTEINGROUP.COM

PARAMUS, NJ

30 A&S DR, PARAMUS, NJ 07652



FOR MORE INFORMATION CONTACT:

CHUCK LANYARD

201.703.9700 x115
clanyard@thegoldsteingroup.com

NEIL GOLDSTEIN

201.703.9700 x112
ngoldstein@thegoldsteingroup.com



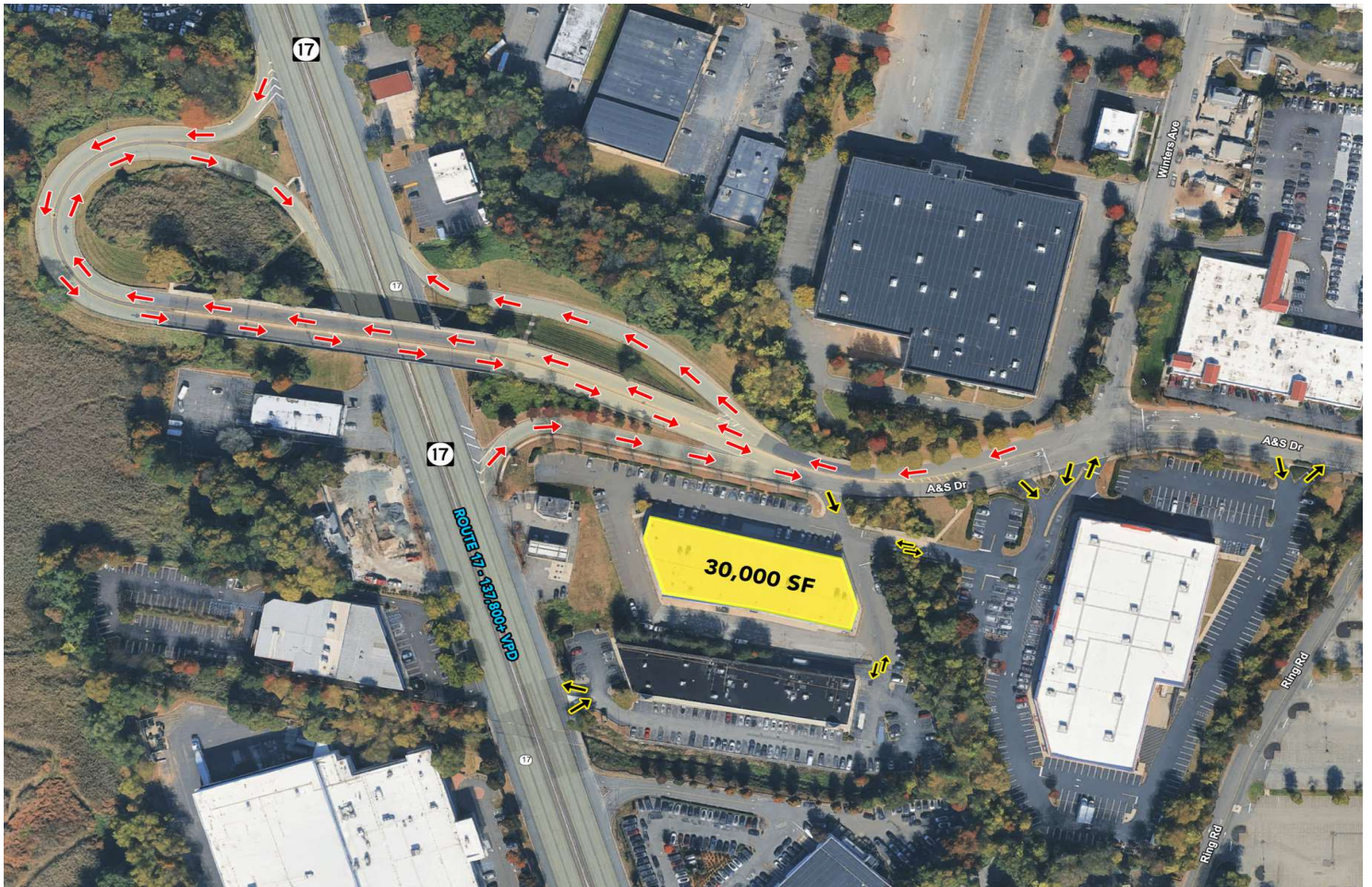
Licensed Real Estate Broker | 45 EISENHOWER DRIVE | SUITE 246 | PARAMUS, NJ 07652

THEGOLDSTEINGROUP.COM

All information is from sources deemed reliable and is submitted subject to errors, omissions, change of price, terms, rental, prior sale and withdrawal without notice.

PARAMUS, NJ

30 A&S DR, PARAMUS, NJ 07652



FOR MORE INFORMATION CONTACT:

CHUCK LANYARD

201.703.9700 x115

clanyard@thegoldsteingroup.com

NEIL GOLDSTEIN

201.703.9700 x112

ngoldstein@thegoldsteingroup.com



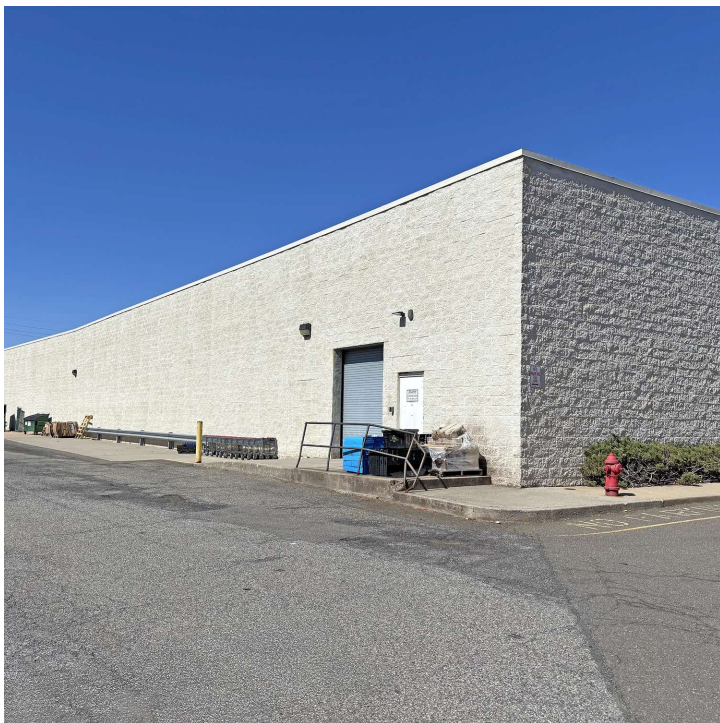
Licensed Real Estate Broker | 45 EISENHOWER DRIVE | SUITE 246 | PARAMUS, NJ 07652

THEGOLDSTEINGROUP.COM

All information is from sources deemed reliable and is submitted subject to errors, omissions, change of price, terms, rental, prior sale and withdrawal without notice.

PARAMUS, NJ

30 A&S DR, PARAMUS, NJ 07652



FOR MORE INFORMATION CONTACT:

CHUCK LANYARD

201.703.9700 x115

clanyard@thegoldsteingroup.com

NEIL GOLDSTEIN

201.703.9700 x112

ngoldstein@thegoldsteingroup.com



Licensed Real Estate Broker | 45 EISENHOWER DRIVE | SUITE 246 | PARAMUS, NJ 07652

THEGOLDSTEINGROUP.COM

All information is from sources deemed reliable and is submitted subject to errors, omissions, change of price, terms, rental, prior sale and withdrawal without notice.

PARAMUS, NJ

30 A&S DR, PARAMUS, NJ 07652



FOR MORE INFORMATION CONTACT:

CHUCK LANYARD

201.703.9700 x115

clanyard@thegoldsteingroup.com

NEIL GOLDSTEIN

201.703.9700 x112

ngoldstein@thegoldsteingroup.com



Licensed Real Estate Broker | 45 EISENHOWER DRIVE | SUITE 246 | PARAMUS, NJ 07652

THEGOLDSTEINGROUP.COM

All information is from sources deemed reliable and is submitted subject to errors, omissions, change of price, terms, rental, prior sale and withdrawal without notice.

PARAMUS, NJ

30 A&S DR, PARAMUS, NJ 07652



Google

Imagery ©2025 Airbus, Maxar Technologies, Vexcel Imaging US, Inc.

FOR MORE INFORMATION CONTACT:

CHUCK LANYARD

201.703.9700 x115
 clanyard@thegoldsteingroup.com

NEIL GOLDSTEIN

201.703.9700 x112
 ngoldstein@thegoldsteingroup.com

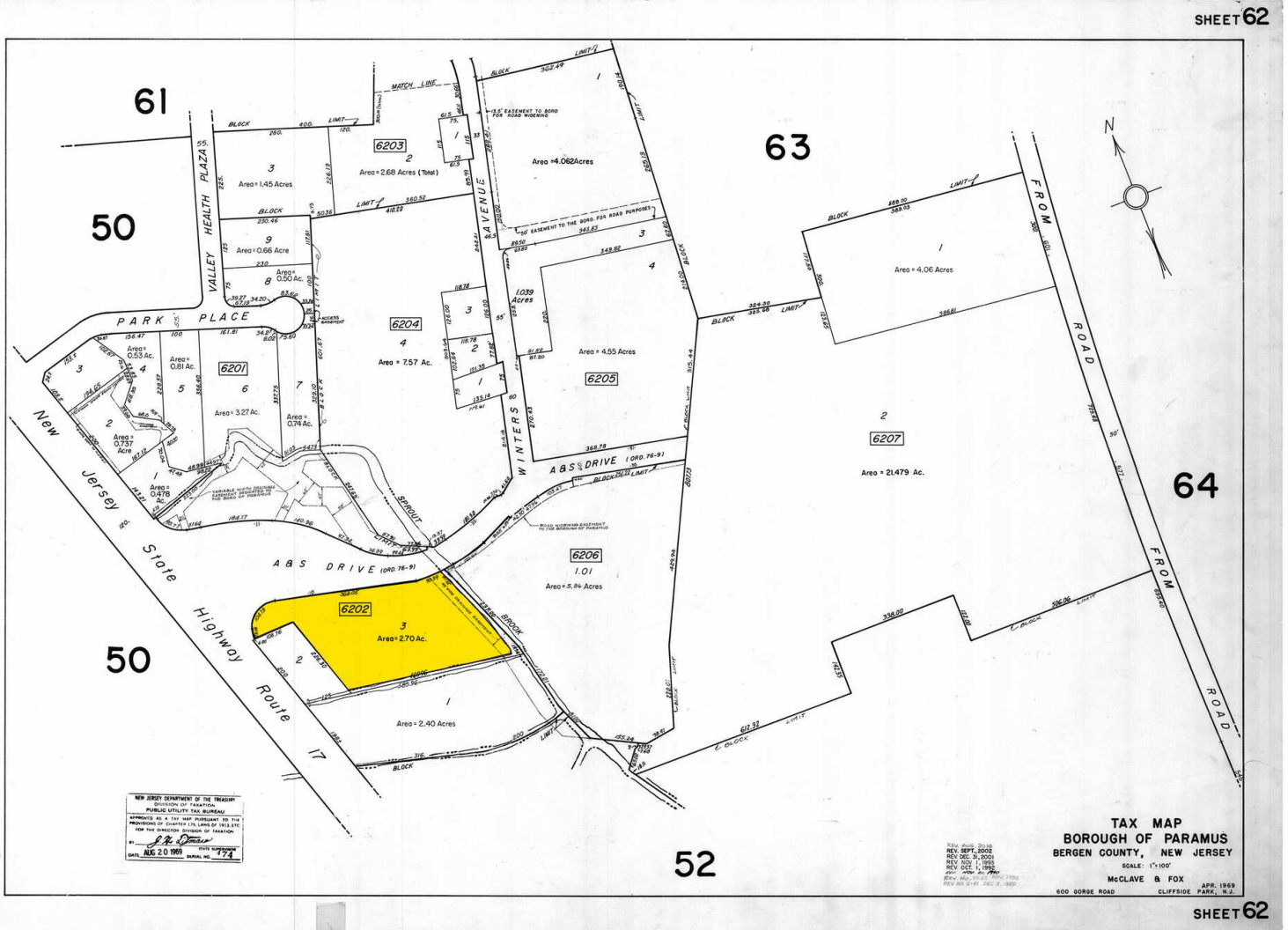


Licensed Real Estate Broker | 45 EISENHOWER DRIVE | SUITE 246 | PARAMUS, NJ 07652

THEGOLDSTEINGROUP.COM

All information is from sources deemed reliable and is submitted subject to errors, omissions, change of price, terms, rental, prior sale and withdrawal without notice.

PARAMUS, NJ
 30 A&S DR, PARAMUS, NJ 07652



FOR MORE INFORMATION CONTACT:

CHUCK LANYARD
 201.703.9700 x115
 clanyard@thegoldsteingroup.com

NEIL GOLDSTEIN
 201.703.9700 x112
 ngoldstein@thegoldsteingroup.com

Licensed Real Estate Broker | 45 EISENHOWER DRIVE | SUITE 246 | PARAMUS, NJ 07652

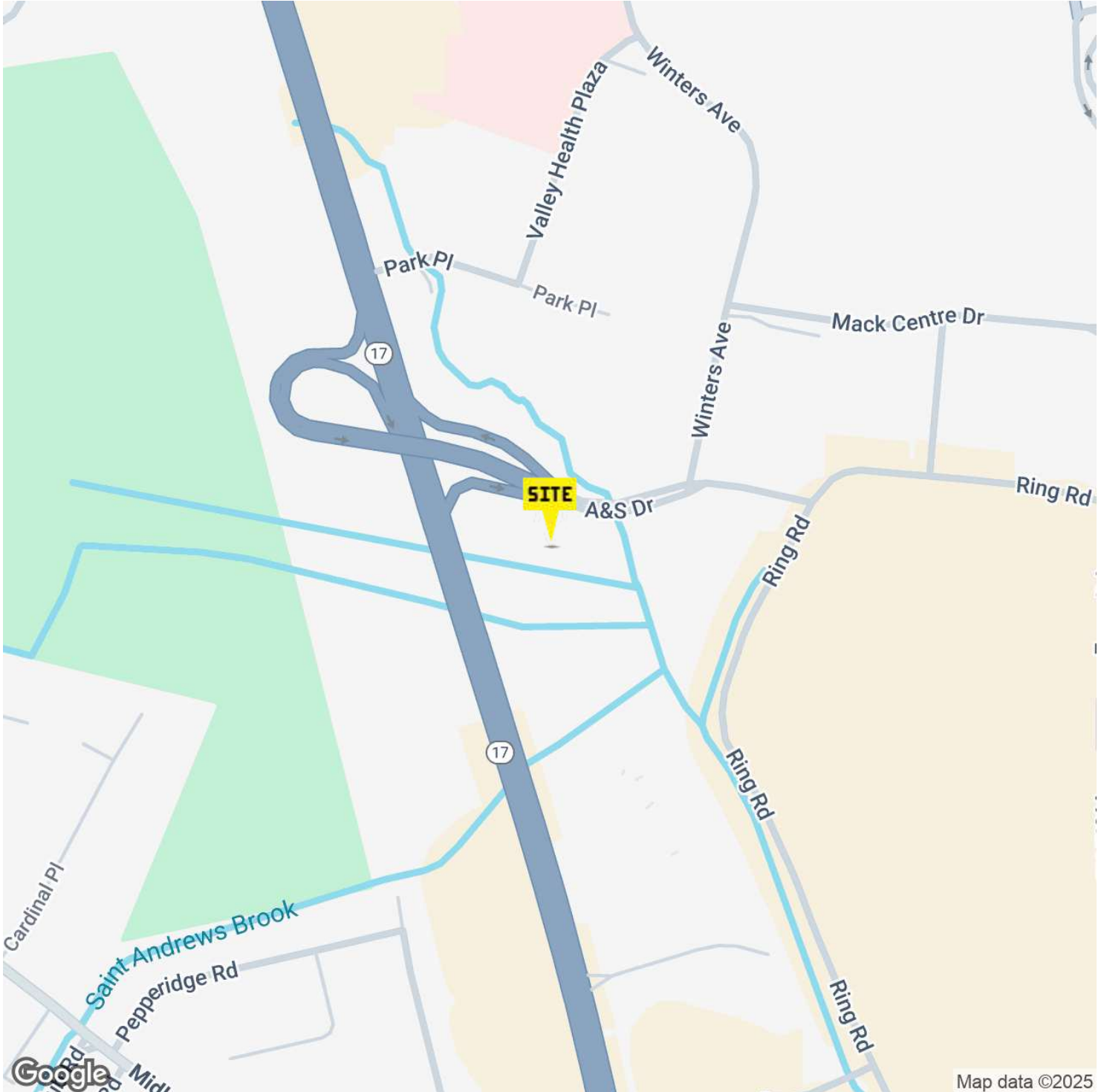
All information is from sources deemed reliable and is submitted subject to errors, omissions, change of price, terms, rental, prior sale and withdrawal without notice.



THEGOLDSTEINGROUP.COM

PARAMUS, NJ

30 A&S DR, PARAMUS, NJ 07652



FOR MORE INFORMATION CONTACT:

CHUCK LANYARD

201.703.9700 x115
clanyard@thegoldsteingroup.com

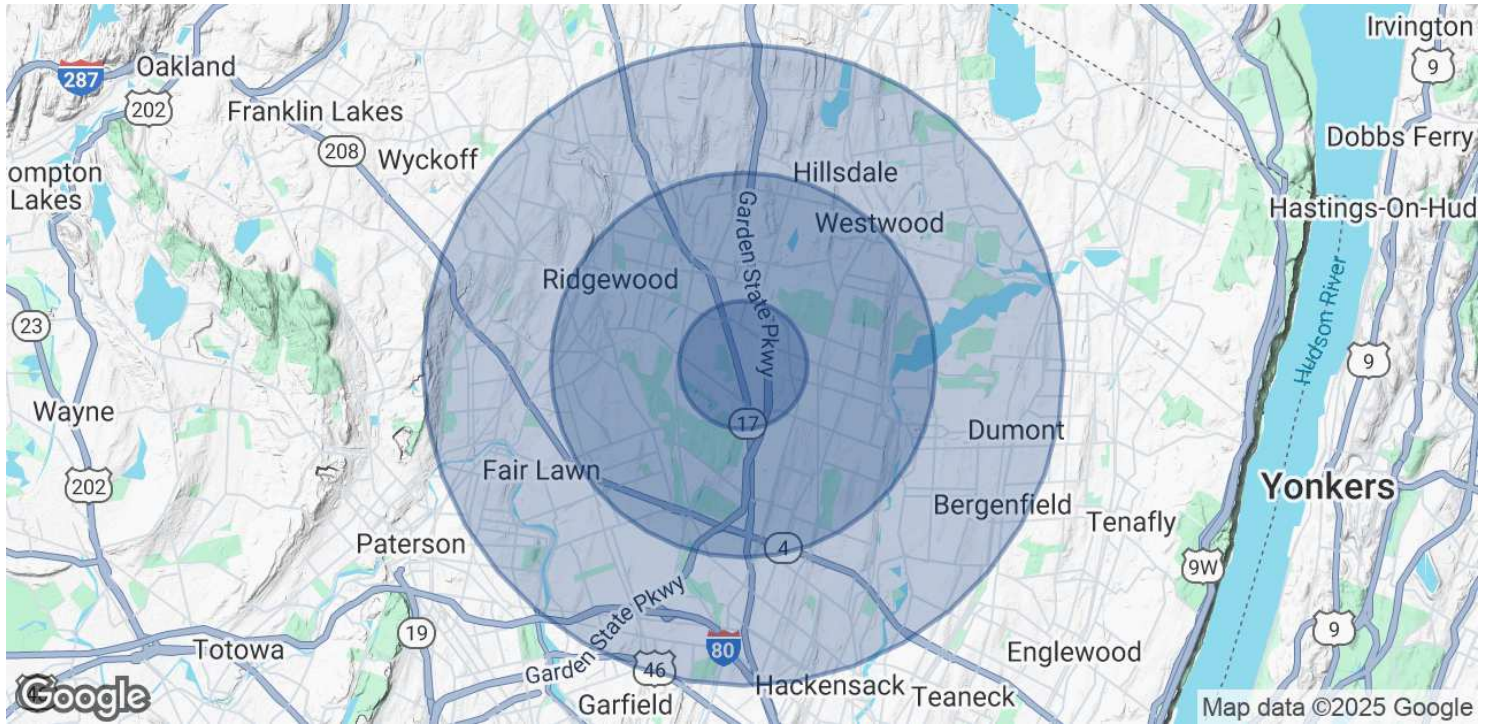
NEIL GOLDSTEIN

201.703.9700 x112
ngoldstein@thegoldsteingroup.com



PARAMUS, NJ

30 A&S DR, PARAMUS, NJ 07652



POPULATION	1 MILE	3 MILES	5 MILES
Total Population	7,353	109,258	409,015
Average Age	47	43	42
Average Age (Male)	45	42	40
Average Age (Female)	48	44	43

HOUSEHOLDS & INCOME	1 MILE	3 MILES	5 MILES
Total Households	2,203	36,770	141,045
# of Persons per HH	3.3	3	2.9
Average HH Income	\$186,860	\$210,324	\$170,735
Average House Value	\$850,583	\$781,277	\$657,127

Demographics data derived from AlphaMap

FOR MORE INFORMATION CONTACT:

CHUCK LANYARD
201.703.9700 x115
clanyard@thegoldsteingroup.com

NEIL GOLDSTEIN
201.703.9700 x112
ngoldstein@thegoldsteingroup.com

