

1080 MAINLAND

THIS IS A  
NON  
SMOKING  
AREA

THIS IS A  
NON  
SMOKING  
AREA

YALETOWN  
CANNABIS

OPEN

1080

NO ALCOHOL  
CONSUMPTION  
ON PREMISES  
PET FRIENDLY  
NOODLE BAR

RESTRICTED  
PARKING ONLY  
VIOLATORS  
TOWED AWAY  
AT  
OWNER'S RISK  
Drake  
1000 PHOENIX ST  
604 251 3344

OPEN

MAINLAND  
MASSAGE

MAINLAND  
MASSAGE

For Sublease

# 1080 Mainland Street

// YALETOWN OFFICE SPACE AVAILABLE

## THE OPPORTUNITY

# 1080 Mainland Street

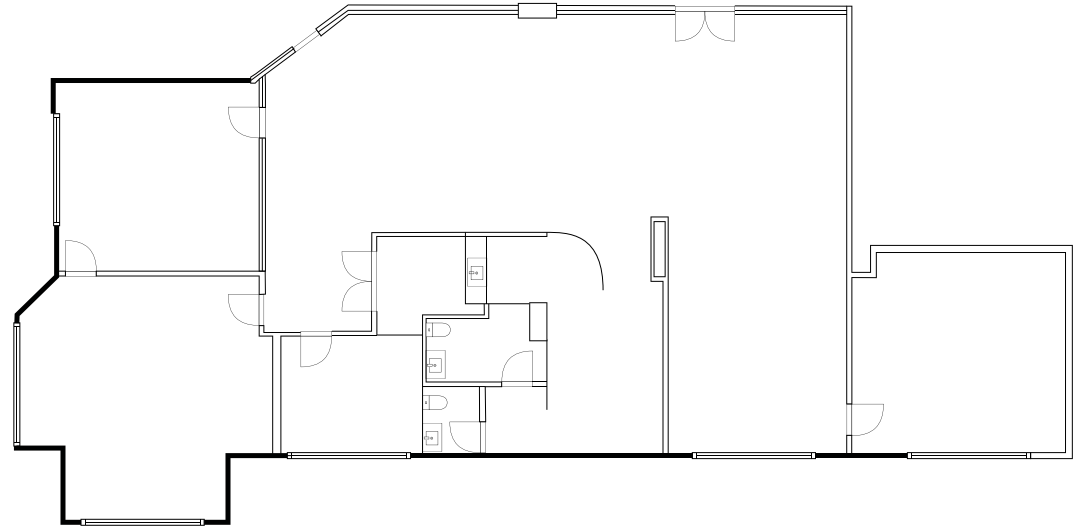
1080 Mainland Street is located in the center of vibrant and historic Yaletown. Not only surrounded by many trendy restaurants, and buzzing outdoor patios, the property is also home to many technology, financial, and other professional services.

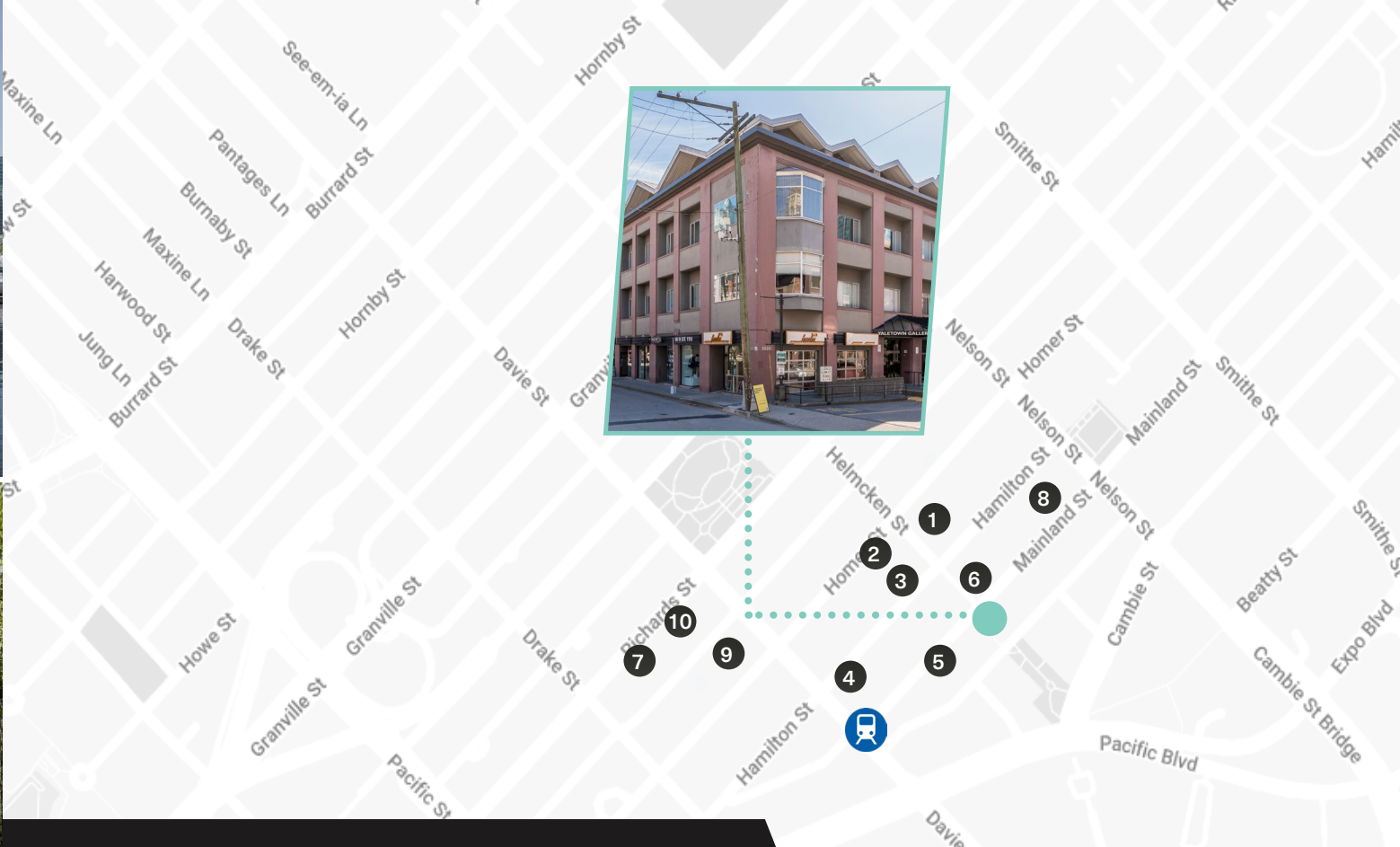
Unit	204
Size	2,264 SF
Availability	Immediately
Term Expiry	May 29th, 2027
Basic Rent	Contact Listing Agent
Additional Rent	\$26.69 PSF



## // Unit 204 2,264 SF

Positioned directly off the elevators, this suite offers an efficient and functional layout featuring two meeting rooms, one private office, and a spacious boardroom. A well-appointed kitchen and lunch area provide added convenience for teams looking for a turnkey workspace.





## NEIGHBOURHOOD

Located in vibrant Yaletown, 1080 Homer offers easy access to top dining, shopping, and entertainment. With excellent transit links, including the Yaletown–Roundhouse Canada Line Station, commuting is easy. Just steps from the Seawall and green spaces like David Lam Park, providing the perfect urban atmosphere.

- |                    |                            |
|--------------------|----------------------------|
| 1. Blue Water Cafe | 6. Earls Kitchen + Bar     |
| 2. Scotiabank      | 7. Jaybird Studio          |
| 3. Elisa Steak     | 8. The Greek Yaletown      |
| 4. Starbucks       | 9. JJ Bean Coffee Roasters |
| 5. Minami          | 10. Choices Market         |



TRANSIT SCORE  
**100**



WALK SCORE  
**99**



BIKE SCORE  
**88**

For more information, please contact:



Robin Macdonald  
SENIOR ASSOCIATE  
+1 604 617-1445  
robin@floorspace.ca



Harris Sheldon  
ASSOCIATE  
+1 604 612 6516  
harris@floorspace.ca

---

#### FLOORSPACE

900 West Hastings St., Suite 520  
Vancouver, BC Canada  
V6C 1E5

[www.floorspace.ca](http://www.floorspace.ca)

This document has been prepared by Floorspace Commercial Inc. for advertising and general information only. All information contained herein is from sources we deem reliable, and we have no reason to doubt its accuracy; however, no guarantee or responsibility is assumed thereof, and it shall not form any part of future contracts. Property information is submitted subject to errors and omissions and all information should be carefully verified. Any interested party should undertake their own inquiries as to the accuracy of the information. All measurements quoted herein are approximate. This publication is the copyrighted property of Floorspace Commercial Inc. and/or its licensor(s). Copyright © 2025 Floorspace Commercial Inc.

