

BLUEBOOK



Address.

69 Wigmore Street, W1U

Size.

471 to 971 sq ft

Possession.

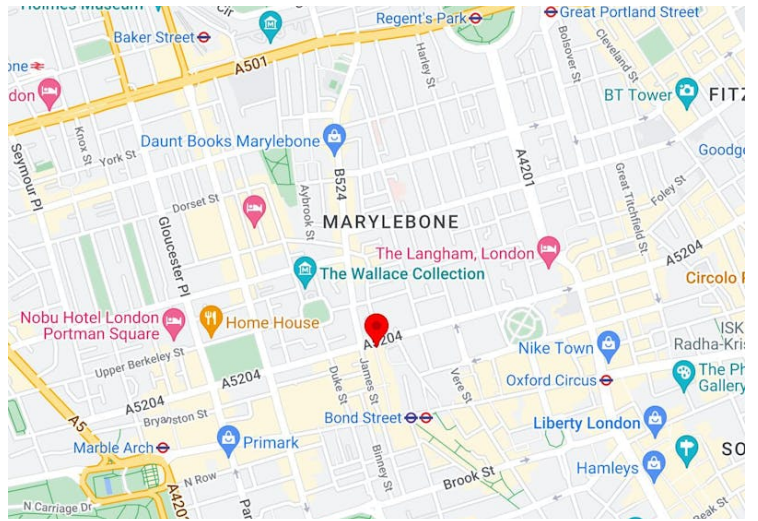
Available Immediately

Overview.

Recently refurbished, open plan CAT A offices in St Christopher's Place with fantastic natural light.

Accommodation

Name	sq ft	sq m	Availability
3rd	500	46.45	Available
2nd	471	43.76	Available
Total	971	90.21	



Specification.

CAT A, Refurbished, Air Conditioning, LED lighting, Tea point, Passenger lift, Fantastic local amenities.

Financials.

Rent	Rent on application
Rates Payable	£24.56 per sq ft
Service Charge	£17.76 per sq ft
EPC Rating	Upon enquiry



Contacts.

Tor Cuming

07714 089823

tor@bluebooklondon.co.uk

George Knowles

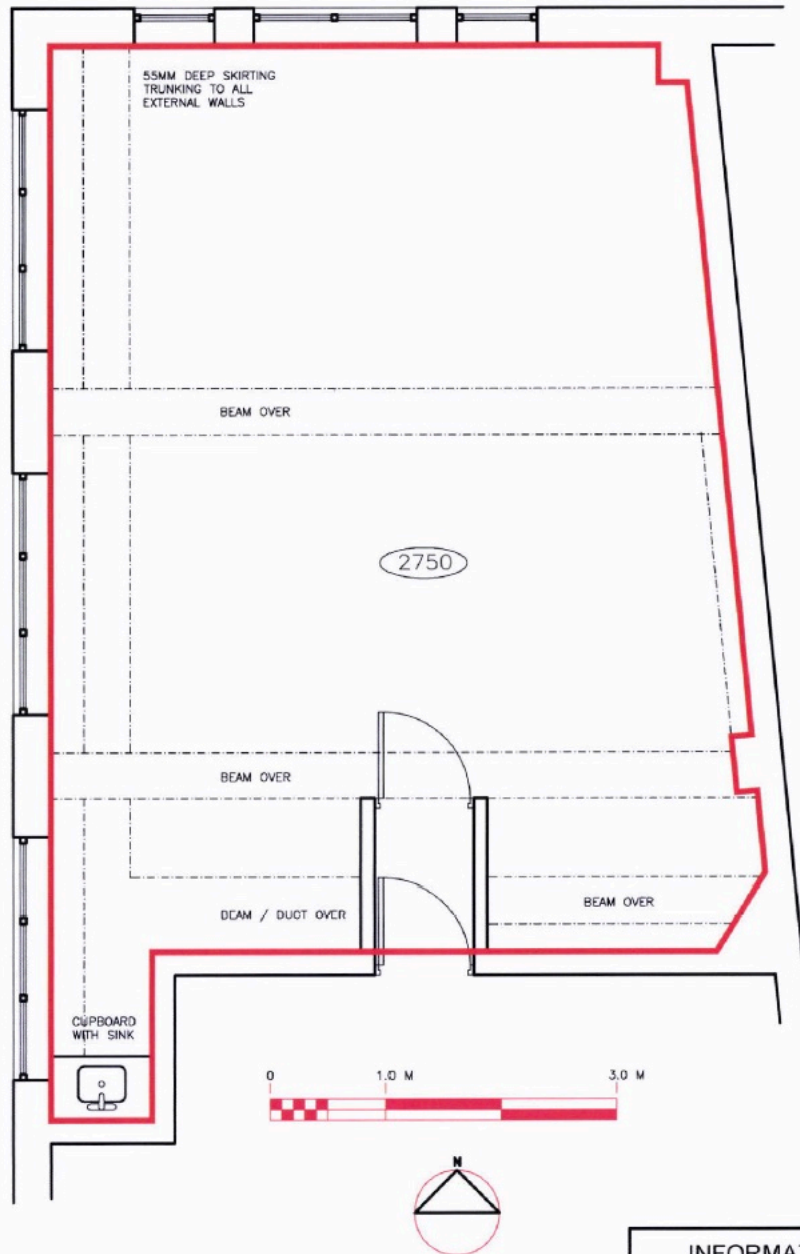
020 7167 6407 | 07565 502931

george@bluebooklondon.co.uk



These particulars do not constitute a contract. Prospective occupiers must not rely upon the details herein as statements of facts or representations and must satisfy themselves as to their accuracy. Generated on 02/02/2026





INFORMATION

CIC|J|W The Old Warehouse
 24 Lambeth Road, London SE1
 Tel: 020 7401 8624 Fax: 020 7401 8625
 Architects - Conservationists - Energy Consultants - Interior and Space Plans

69 WIGMORE STREET LONDON

EXISTING 3RD FLOOR LEASE PLAN

1:50 @ A4	MAY10	SM		
1270/LP03				