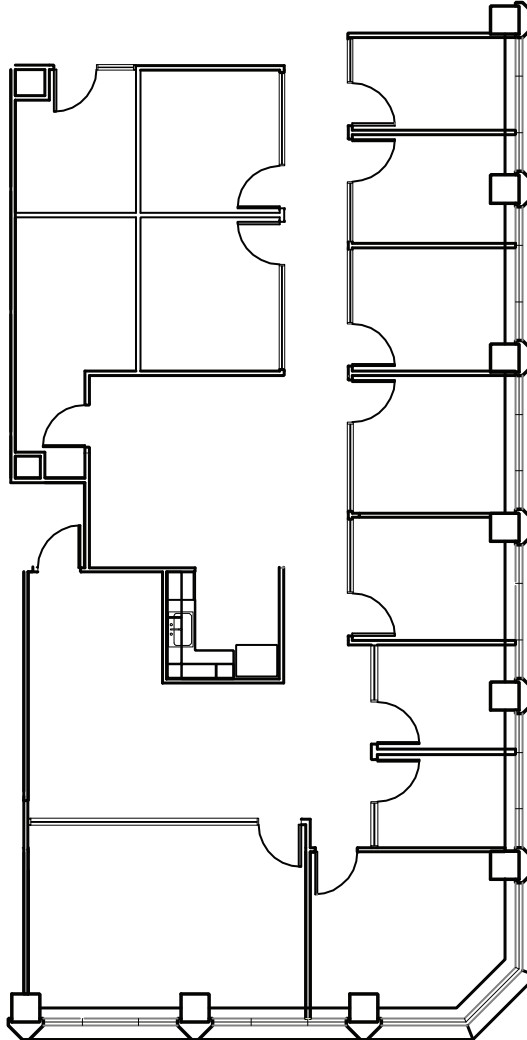


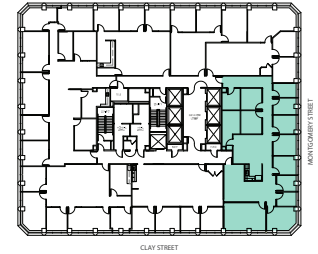
Suite 750 - PENDING

3,128 RSF

- Office intensive Montgomery Street facing suite
- Conference room
- 10 offices (2 internal)
- Open kitchen
- IDF & storage rooms
- Reception
- Hardwood floors throughout
- Available July 2026



601



Kelly Glass
415.322.5062
kelly.glass@avisonyoung.com
RE Lic #01335179

Colton Hanley
415.913.8699
colton.hanley@avisonyoung.com
RE Lic #02089768

Elliot Ashkenazy
415.596.6886
elliot.ashkenazy@avisonyoung.com
RE Lic: 02280616

