

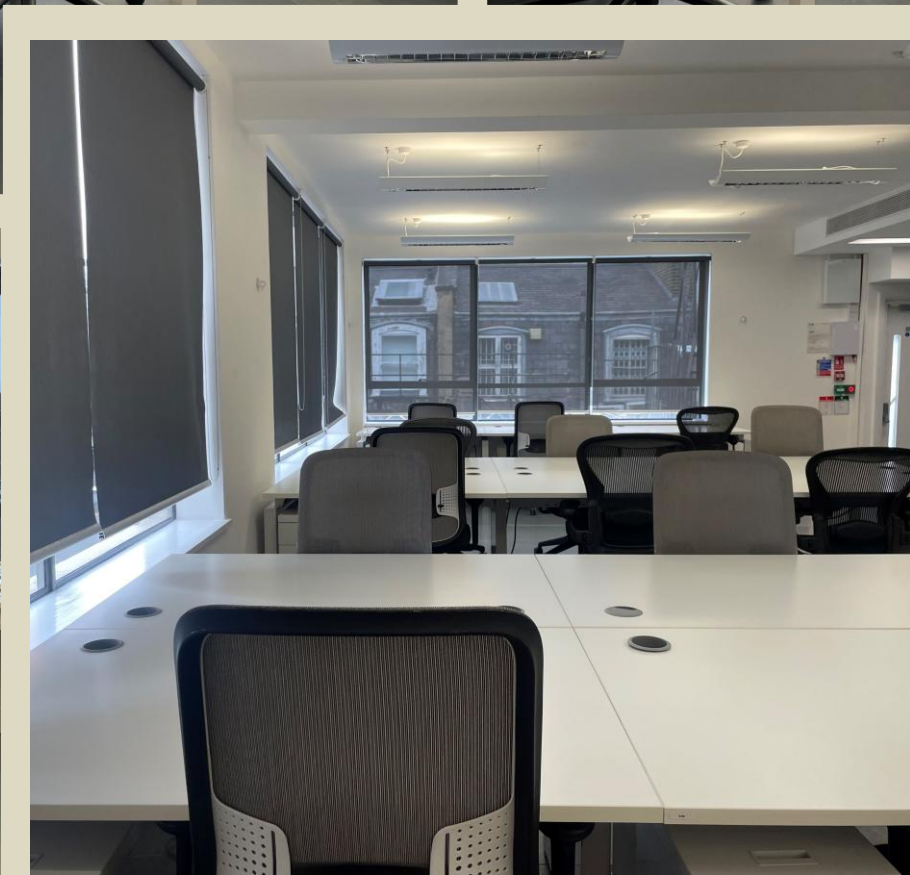


**10 LITTLE PORTLAND STREET
LONDON W1W 7GJ**

Short term media style floor to let

1,648 sq ft





LOCATION

The building is located on the North side of Little Portland Street close to the junction with Regent Street.

Oxford Circus Underground Station is less than 5 mins walk from the building (Victoria, Central and Bakerloo lines) with numerous bus routes available from both Regent Street and Oxford Street.

FLOOR AREAS

Fourth Floor 1,648 sq ft 153.10 sq m

LEASE

The property is offered on new short term sub-lease for a term by arrangement.

AMENITIES

- Plug and play
- Excellent natural light
- Kitchen
- Furniture available
- Communal terrace and meeting rooms

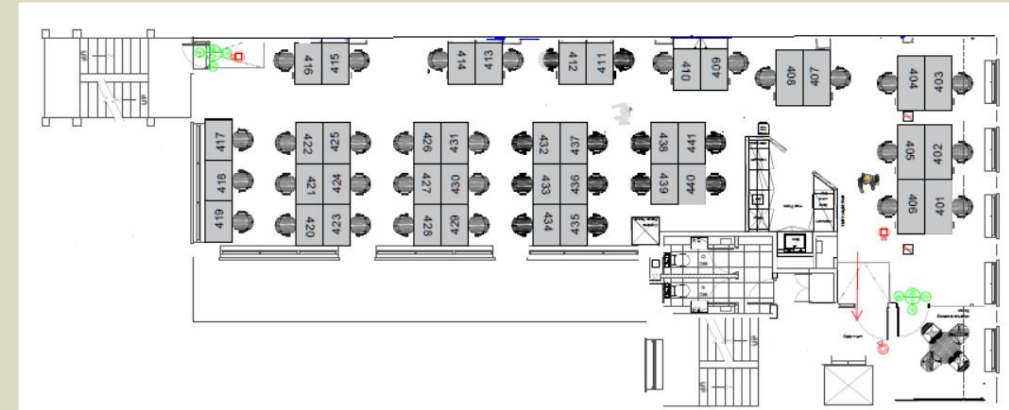
DESCRIPTION

The building has been fitted out to a high standard incorporating a media style finish. The 4th floor is laid out mainly in open plan with 40 workstations and an open plan kitchen.

The ground floor comprises meeting rooms and breakout areas, that are available for hire.

TERMS

Upon Application



VIEWING & FURTHER INFORMATION



Darren Best
db@savoystewart.co.uk
0207 478-9115
07932-714992