

AVAILABLE FOR LEASE

2700 Loch Raven Rd, Baltimore Maryland

- 22,099 SF Fully Furnished Office Building
- Two Floors Plus Basement Available
- Well Appointed with High End Finishes



Marcus & Millichap

Offering Summary

**2700 Loch Raven Rd
Baltimore, MD 21218**

2700 Loch Raven Office Building

Office Size : 22,182 SF
Basement SF: 7,544 SF
Upper Two Floors: 14,638 SF
Parking Spaces: 69
- Fully Furnished

Property Zoning: I-1 (Light Industrial)



Listing Contacts:

Marcus & Millichap

Bryn Merrey

202-536-3727

Bryn.Merrey@MarcusMillichap.com

John Faus

202-536-3718

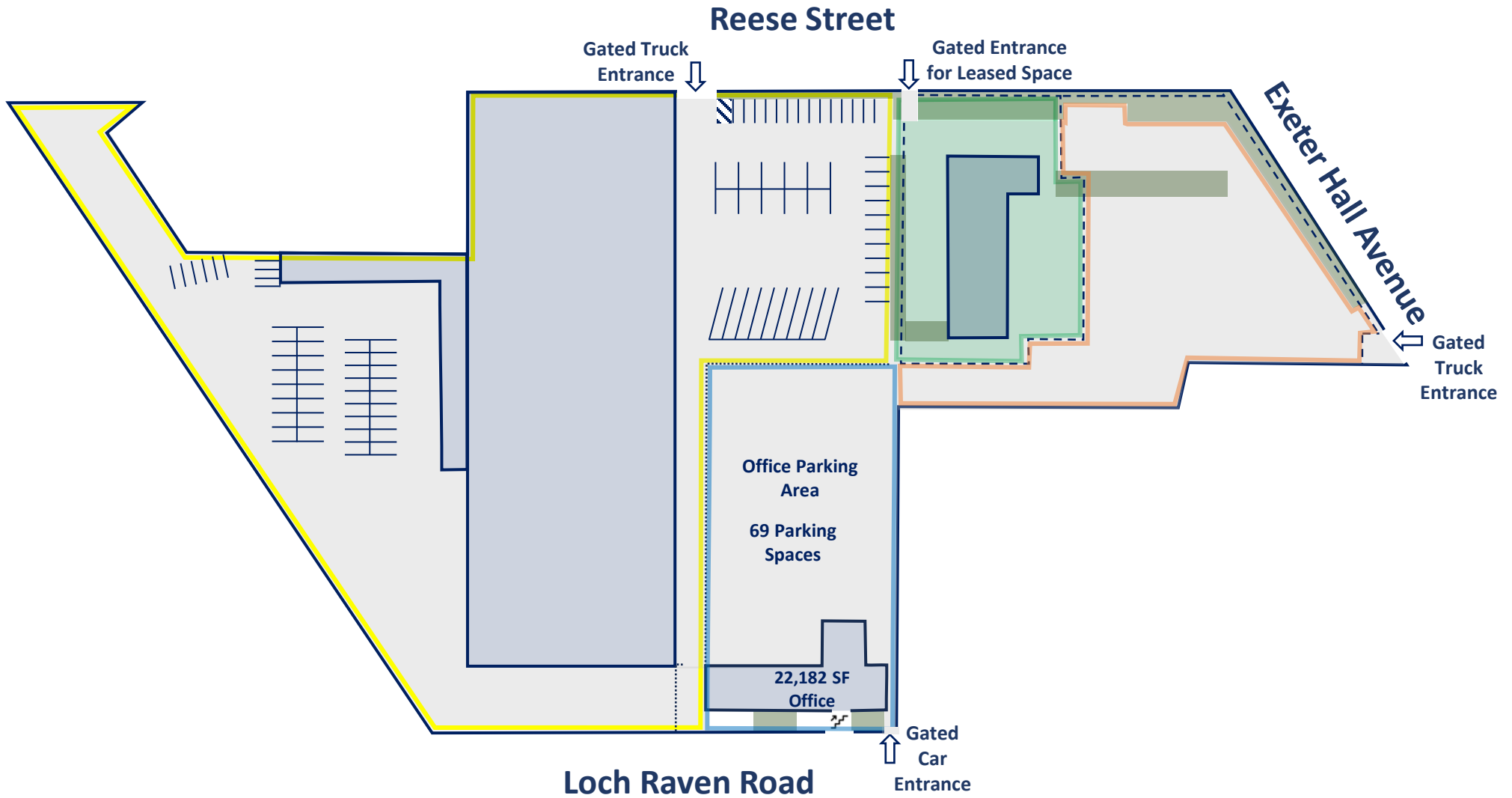
John.Faus@MarcusMillichap.com

Alec Schwartz

202-536-3722

Alec.Schwartz@MarcusMillichap.com

Offering Summary



Office Highlights

Basement Rent: \$8.00 /SF NNN
Upper Two Floors Rent: \$12.00 /SF NNN

2700 Loch Raven Road Highlights

- I-1 Zoning
- Fully Fenced, Paved & Lit
- Automatic Gates, Security Cameras, Exterior Lights
- Located in the Heart of Baltimore
- Emergency Generator can Provide Full Power

22,099 SF Office Highlights

- Former Corporate Headquarters Building
 - Well-Appointed with High End Finishes
 - Fully Furnished
 - Above-Average Parking Ratio (up to 69 spaces)
 - Two Floors + Basement
- **Basement (7,544 SF) can be rented separately from upper two floors. Upper two floors (14,638 SF) must be rented together.**

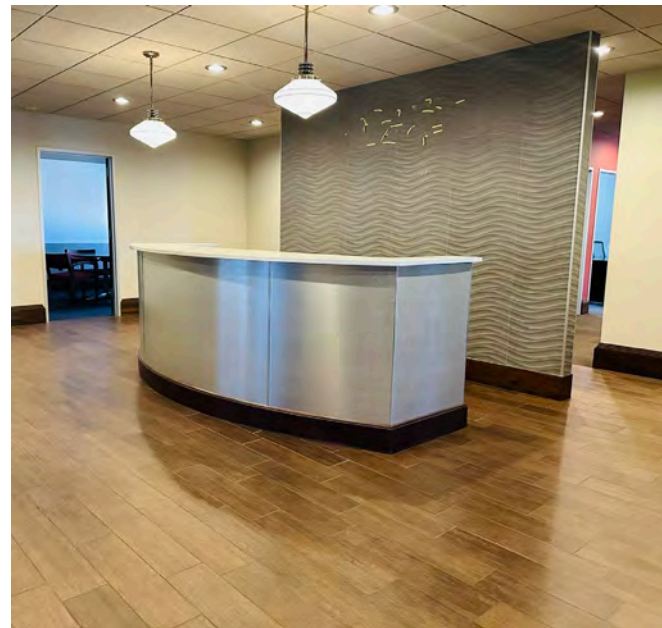


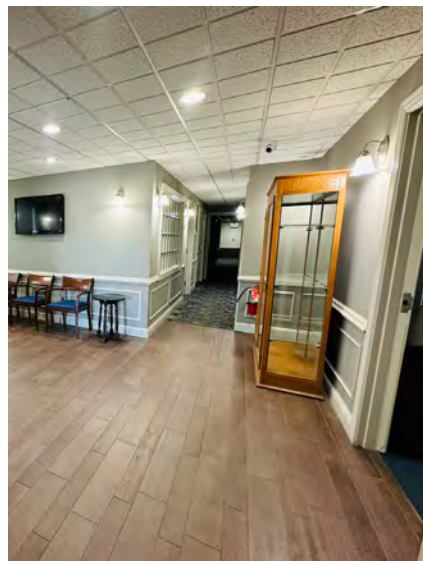
2700 Loch Raven Office Building

Parcel Number	09-04-4086-011
Year Built	1950
Gross Size	22,099 SF
First Floor	7,313 SF
Second Floor	7,323 SF
Basement	7,463 SF
Zoning	I-1
Lot Features	Fenced, Lit & Secured
Floors	2 + Basement
Parking	69 Spaces
Structure	Steel
Exterior Walls	Brick
Boiler	Four Weil-McLain No. 2 Fuel Oil, 150 MBH each
Air-Conditioning	29 Mini split systems
Roof	BUR/Gravel
Water	Municipal
Sewer & Drains	City of Baltimore
Electricity	BGE
Power	Undetermined
Lighting	Fluorescent & some LED
Sprinkler	None
Bathrooms	9
Backup Generator	Shared with Warehouse



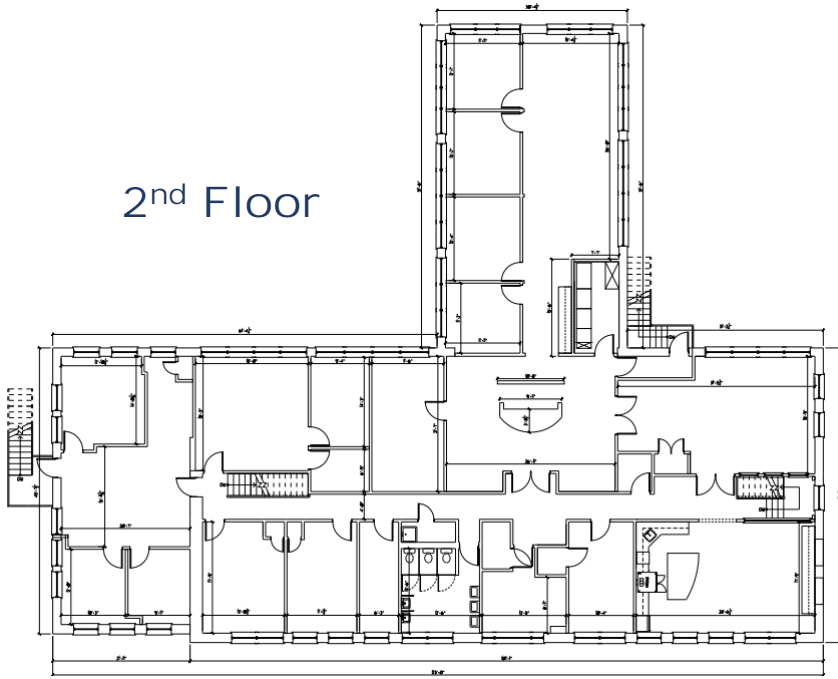
2700 Loch Raven Road Office Pictures



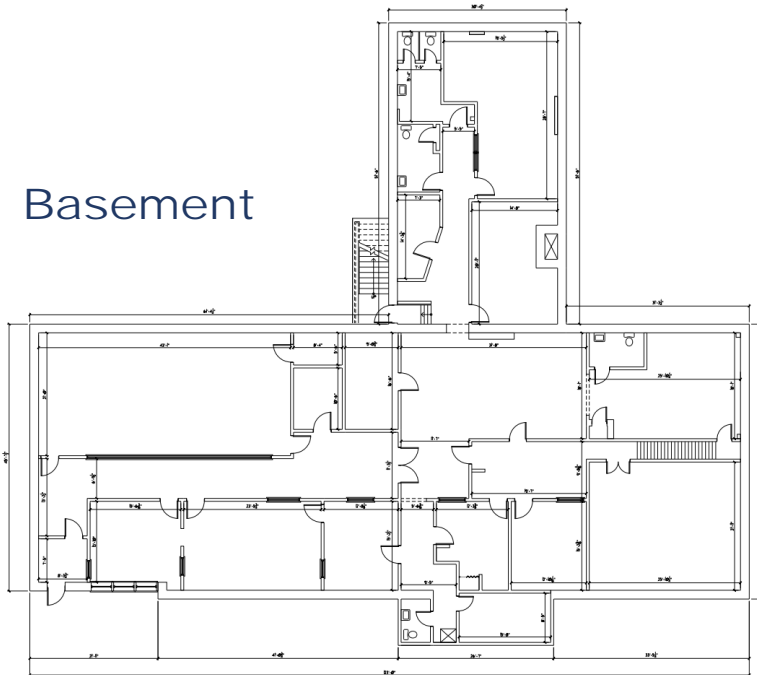


Office Floor Plans

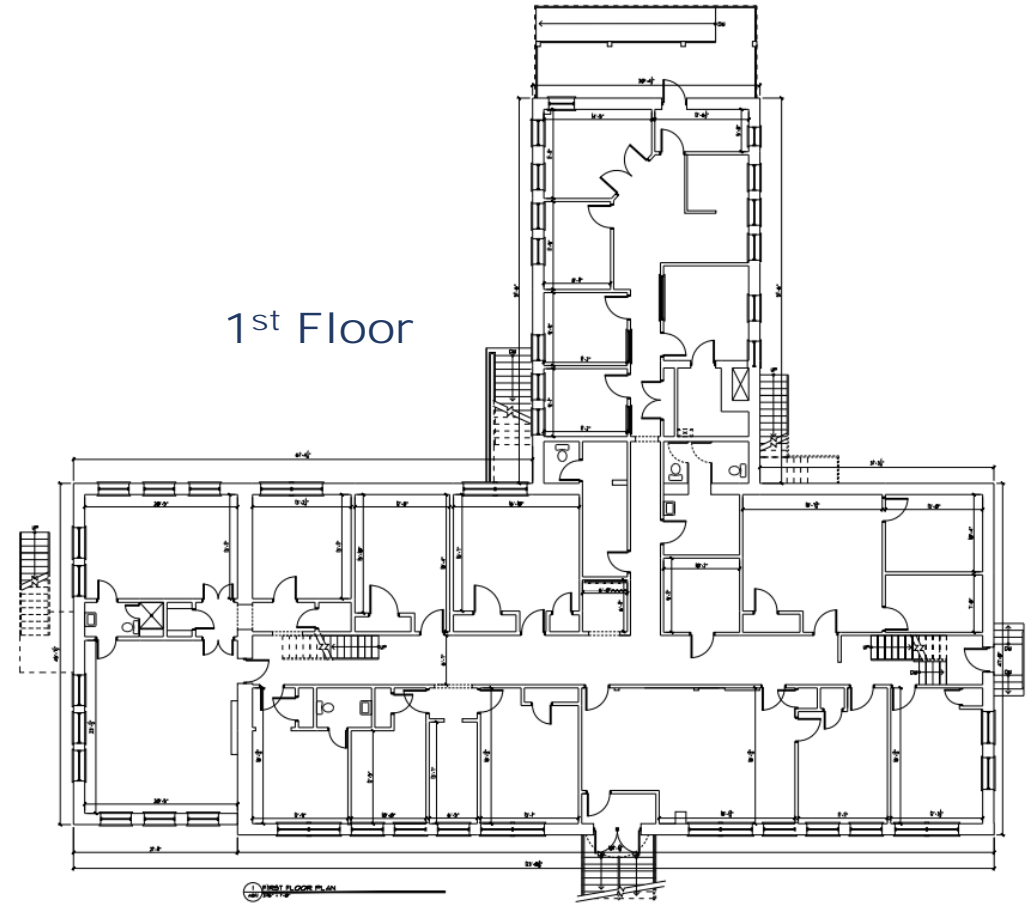
2nd Floor



Basement

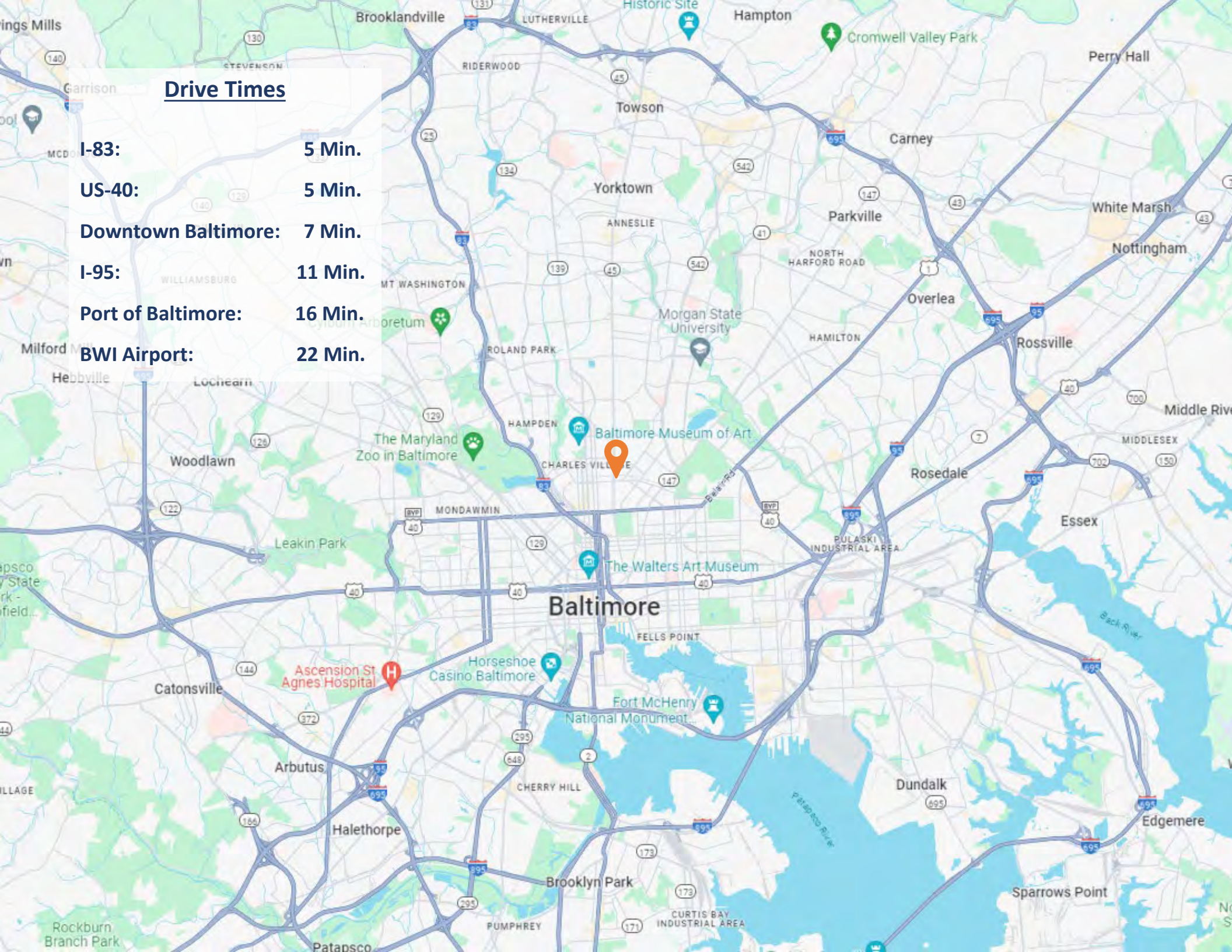


1st Floor



Drive Times

I-83:	5 Min.
US-40:	5 Min.
Downtown Baltimore:	7 Min.
I-95:	11 Min.
Port of Baltimore:	16 Min.
BWI Airport:	22 Min.



Marcus & Millichap

Listing Contacts

Bryn Merrey
202-536-3727

Bryn.Merrey@MarcusMillichap.com

John Faus
202-536-3718

John.Faus@MarcusMillichap.com

Alec Schwartz
202-536-3722

Alec.Schwartz@MarcusMillichap.com