

Creative Offices FOR LEASE

SCRIPPS LAKE OFFICE PLAZA

9810 Scripps Lake Drive, San Diego, CA 92131

YEAR 1 PROMO RATE: \$1.99 + UTILITIES



PROPERTY DETAILS

- An approximately ±13,628 SF Class “A” creative office building
- Modern architecture
- Prominent building location at the center of Scripps Lake Drive and Treena Street
- On-site showers
- Close proximity to multiple restaurants, retail centers, fitness centers and Mira Mesa Market Center (500,000 SF)

AVAILABILITY

Suite C: ±1,313 RSF

Voit

REAL ESTATE SERVICES

JOSH WEST, SIOR

Senior Vice President, Partner
(858) 458-3358 | Lic. #01923375
jwest@voitco.com

BRIAN MULVANEY, SIOR, CCIM

Senior Vice President, Partner
(858) 458-3372 | Lic. #00938944
bmulvaney@voitco.com

4180 La Jolla Village Dr. #100 • La Jolla, CA 92037
858.453.0505 | 858.408.3976 Fax | Lic #01333376

Licensed as a Real Estate Salesperson and Broker by the DRE. The information contained herein has been obtained from sources we deem reliable. While we have no reason to doubt its accuracy, we do not guarantee it. ©2026 Voit Real Estate Services, Inc. All Rights Reserved. | www.voitco.com

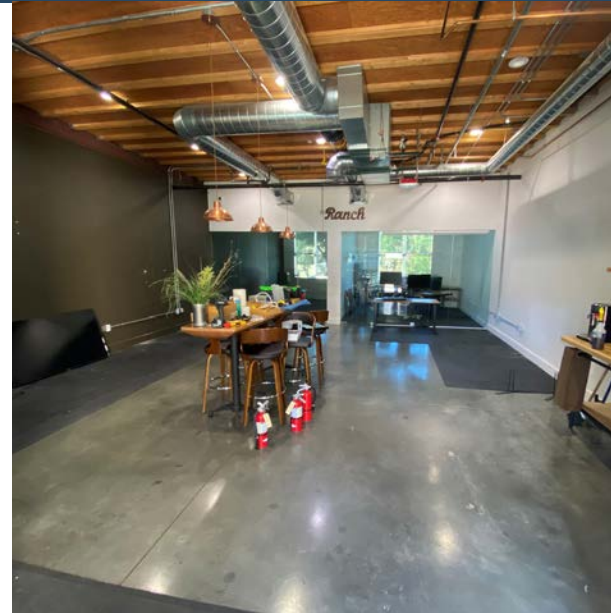
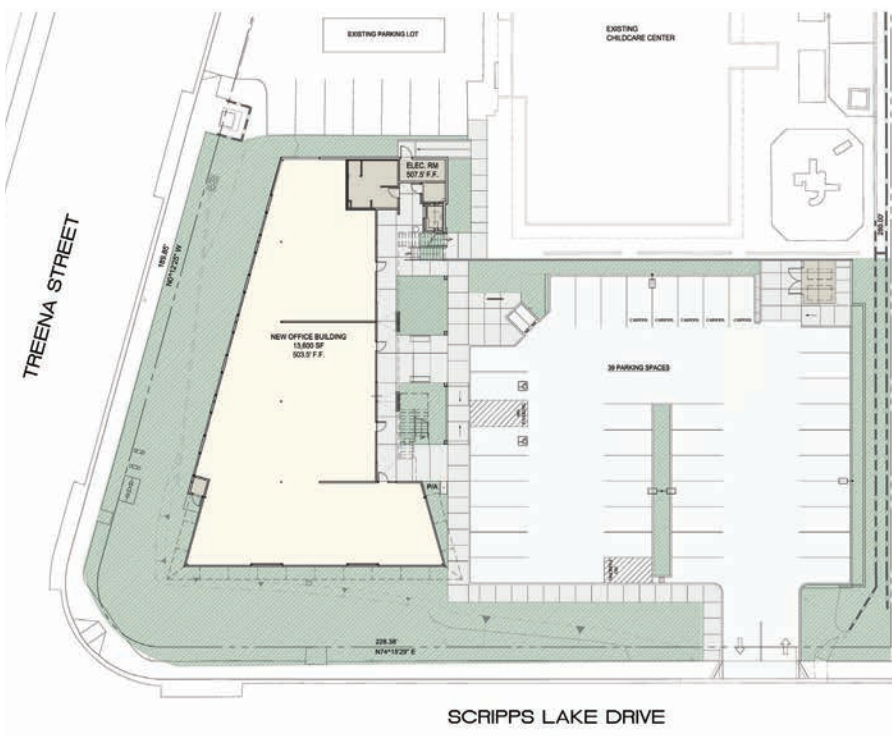
PLAZA LOCATION

Scripps Lake Office Plaza is located in Scripps Ranch, just northeast of San Diego. This building stands prominently at the corner of Scripps Lake Drive and Treena Street.

PLAZA DESCRIPTION

Scripps Lake Office Plaza features dramatic angled geometry and a striking use of bold color, and stands prominently at the corner of Scripps Lake Drive and Treena Street in Northeast San Diego. The two story office project provides approximately 13,628 SF of office space, and the development includes approximately 31,000 SF of site area to support the office, including 45 parking spaces, landscaping, and site and accent lighting. The design features a 2,500 SF landscaped entry courtyard with eastern exposure serving as the front door to the office suites.

SITE PLAN



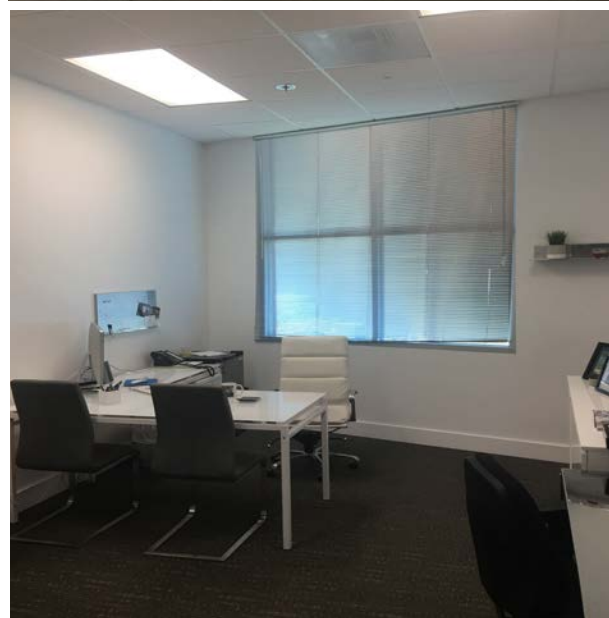
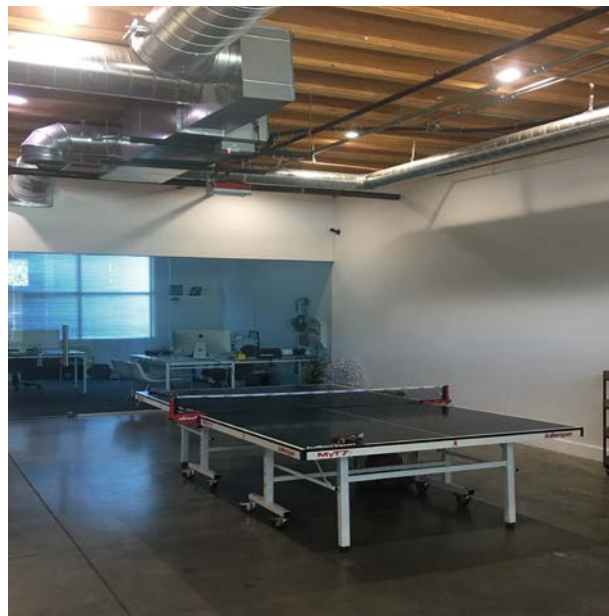
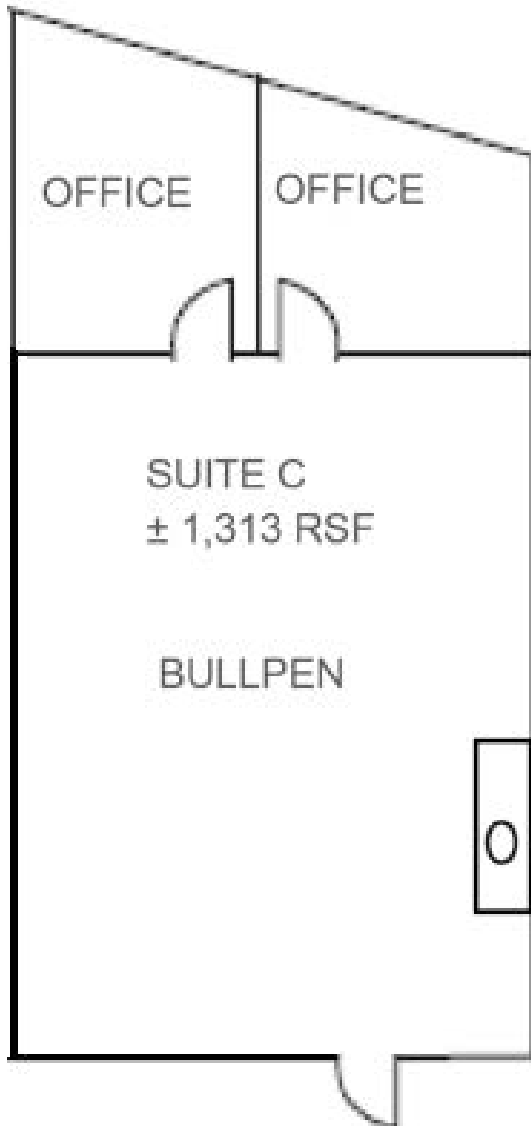
SUITE C

SIZE: ±1,313 RSF

RATE: \$1.99 + Utilities*

*Year 1 Promo Rate

AVAILABLE: 4/1/2026

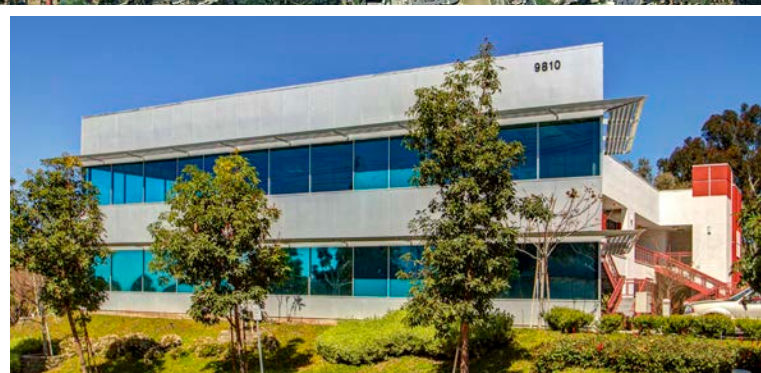
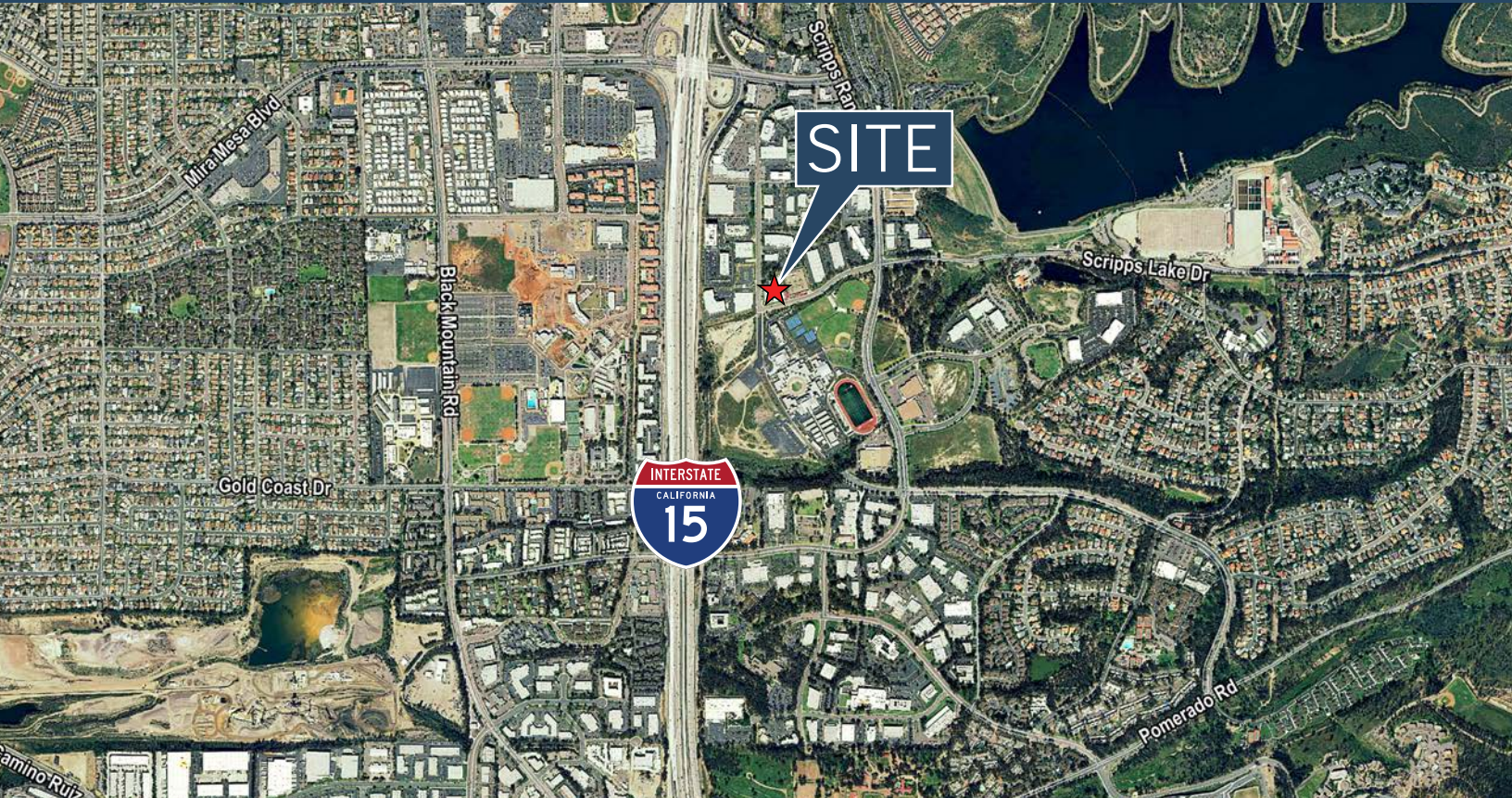


Voit

REAL ESTATE SERVICES

SCRIPPS LAKE OFFICE PLAZA

9810 SCRIPPS LAKE DRIVE | SAN DIEGO, CALIFORNIA 92131



JOSH WEST, SIOR

Senior Vice President, Partner
(858) 458-3358 | Lic. #01923375
jwest@voitco.com

BRIAN MULVANEY, SIOR, CCIM

Senior Vice President, Partner
(858) 458-3372 | Lic. #00938944
bmulvaney@voitco.com

4180 La Jolla Village Dr. #100 • La Jolla, CA 92037
858.453.0505 | 858.408.3976 Fax | Lic #01333376

Licensed as a Real Estate Salesperson and Broker by the DRE. The information contained herein has been obtained from sources we deem reliable. While we have no reason to doubt its accuracy, we do not guarantee it. ©2026 Voit Real Estate Services, Inc. All Rights Reserved. | www.voitco.com