

# COMMERCIAL LEASE OPPORTUNITY

RIGHT SPACE | RIGHT PLACE



## Empire Towers I

3633 Inland Empire Blvd., Ontario, CA 91764

### PRESENTED BY

#### **Michael G. Rademaker**

Founder/CEO

909-579-1340

[mrademaker@mgrservices.com](mailto:mrademaker@mgrservices.com)

DRE Lic #00556679

#### **Lynn Yangchana, CCIM**

Vice President

909-579-1399

[lynn@mgrrealestate.com](mailto:lynn@mgrrealestate.com)

DRE Lic #01518762

**MGR**  
Real Estate

### Features:

- +/- 188,612 SF, 9-Story, Class A Office Building
- Premiere Ontario Airport Submarket Location
- Prominent I-10 Freeway Visibility
- Built in 1991; Zoning: SP, City of Ontario
- Immediate Access to I-10, at Haven Avenue
- Close Proximity to I-15 and 60 Freeways
- 4/1,000 Parking; Reserved Parking Available
- Card Key Security System; Full Service Gross Leases
- Professionally Managed and Maintained

**Commercial | Residential | Property Management**

ONTARIO 909-981-4466

VICTORVILLE 760-955-7888

CARLSBAD 760-683-8102

[www.mgrrealestate.com](http://www.mgrrealestate.com)

BRE ID# 01841921

All items on this page are deemed to be accurate, but should be viewed as reference only. MGR Real Estate, Inc. does not warranty/guaranty the validity of any information on this page.



# Empire Towers I - Offices for Lease

3633 Inland Empire Blvd., Ontario, CA 91764

Floor / Suite #	Rentable Sq. Ft.	Description	Status
5 <sup>th</sup> / 500	5,390	Reception area, conf. room, 7 offices, storage, breakroom, IT room, and open area for cubicles	Available
5 <sup>th</sup> / 560-575	5,291	Reception area, conf. room, 10 offices, breakroom, and open area for cubicles (Divisible: 2,483 RSF and 2,808 RSF)	Available
6 <sup>th</sup> / 660	1,614	Reception area, conf. room, 5 offices, and breakroom	Available 11/01/2026
7 <sup>th</sup> / 777	2,410	Reception area, conf. room, 5 offices, breakroom, and small open area for workstations	Available
7 <sup>th</sup> / 790	2,827	Reception area, conf. room, 4 offices, 3 small rooms, and open area for workstations	Available 04/01 2026
8 <sup>th</sup> / 890	2,355	Reception area, conf. room, 3 offices and open area	Available
8 <sup>th</sup> / 895	4,530	Reception area, 2 conf. rooms, 6 offices, breakroom, IT room, and open area for workstations	Available in 60 days



For more information, contact:

**Michael G. Rademaker**  
 Founder / Broker | Lic. #00556679  
 Office Direct: 909-579-1340

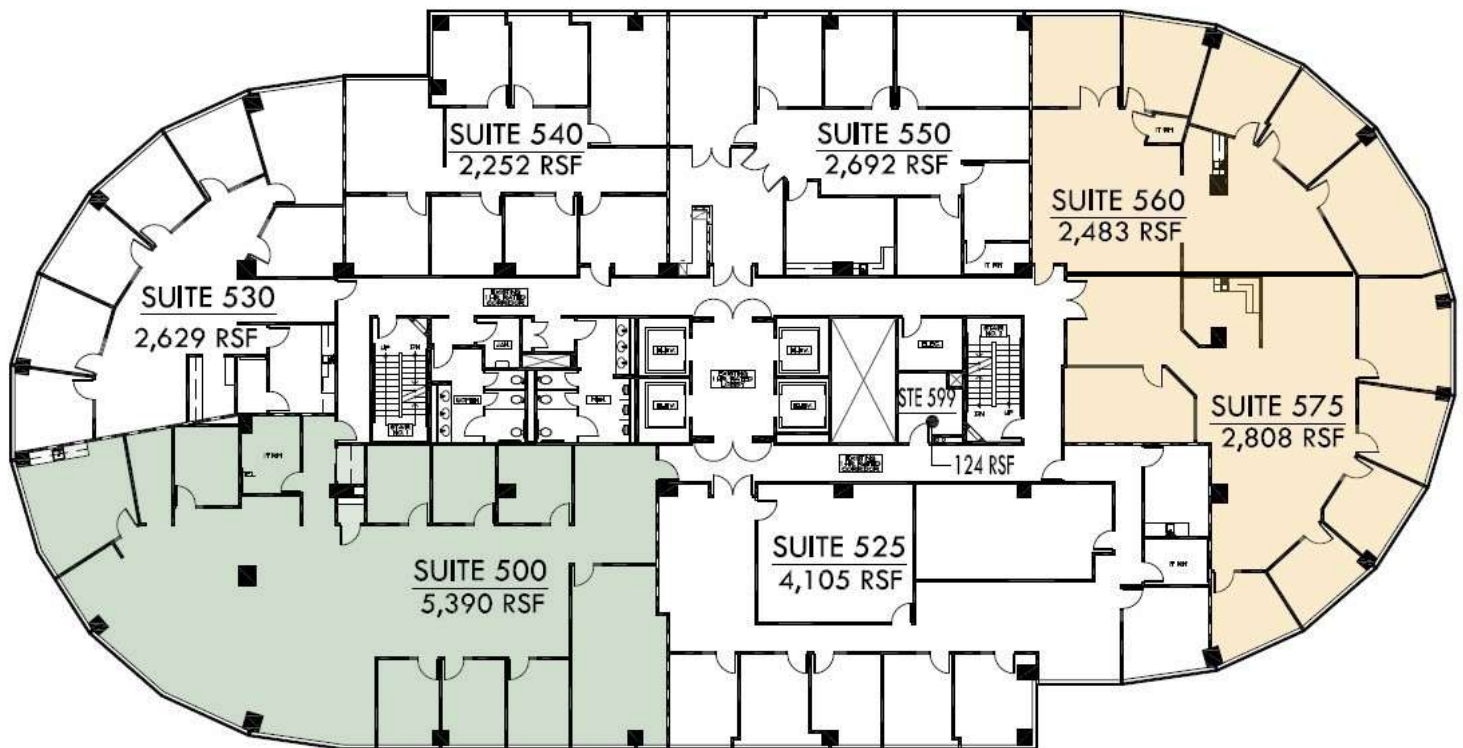
**Lynn Yangchana**  
 Vice President, CCIM | Lic. #01518762  
 Office Direct: 909-579-1399

\*All items on this page are deemed to be correct but should be viewed as reference only. MGR Real Estate, Inc. does not warranty/guaranty the validity of any information on this page.

Commercial & Residential Real Estate  
 Corporate: 3800 E Concours St., Suite 350, Ontario, California 91764 | Office: 909-981-4466 / Fax: 909-981-6267  
 Ontario • Victorville • Costa Mesa • Irvine • Carlsbad • Rancho Mirage  
[www.mgrrealestate.com](http://www.mgrrealestate.com) • DRE #. #01841921

**Empire Towers I**  
**3633 Inland Empire Blvd., Ontario, CA – 5<sup>th</sup> Floor**

**Suite 500: 5,390 RSF (Available) | Suite 560-575: 5,291 RSF; Divisible (Available)**



**5TH FLOOR PLAN**



**For more information, contact:**

**Michael G. Rademaker**  
Founder / CEO | Lic. #00556679  
Office Direct: 909-579-1340

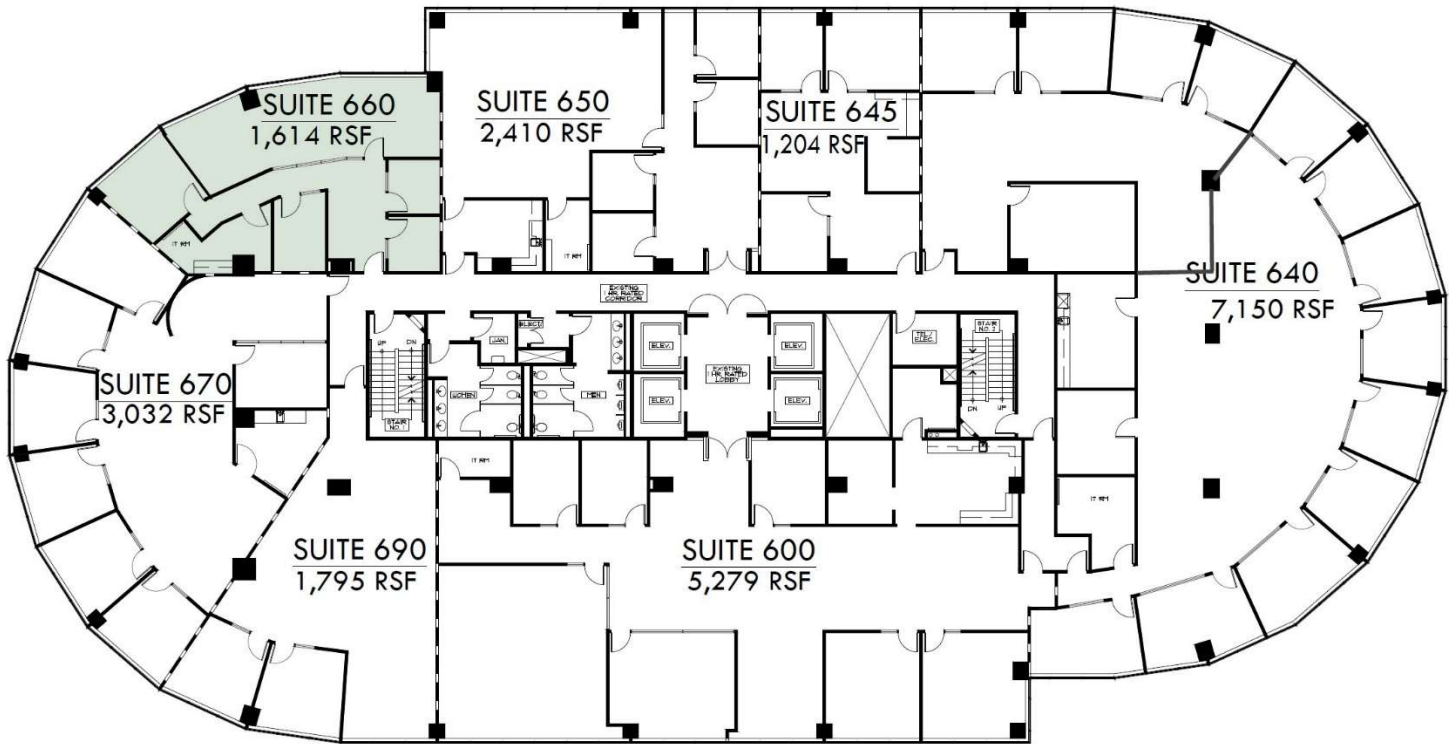
**Lynn Yangchana**  
Vice President, CCIM | Lic. #01518762  
Office Direct: 909-579-1399

\*All items on this page are deemed to be correct but should be viewed as reference only. MGR Real Estate, Inc. does not warranty/guaranty the validity of any information on this page.



**Empire Towers I**  
**3633 Inland Empire Blvd., Ontario, CA – 6<sup>th</sup> Floor**

**Suite 660: 1,614 RSF (Available 11/01/2026)**



**6TH FLOOR PLAN**



**For more information, contact:**

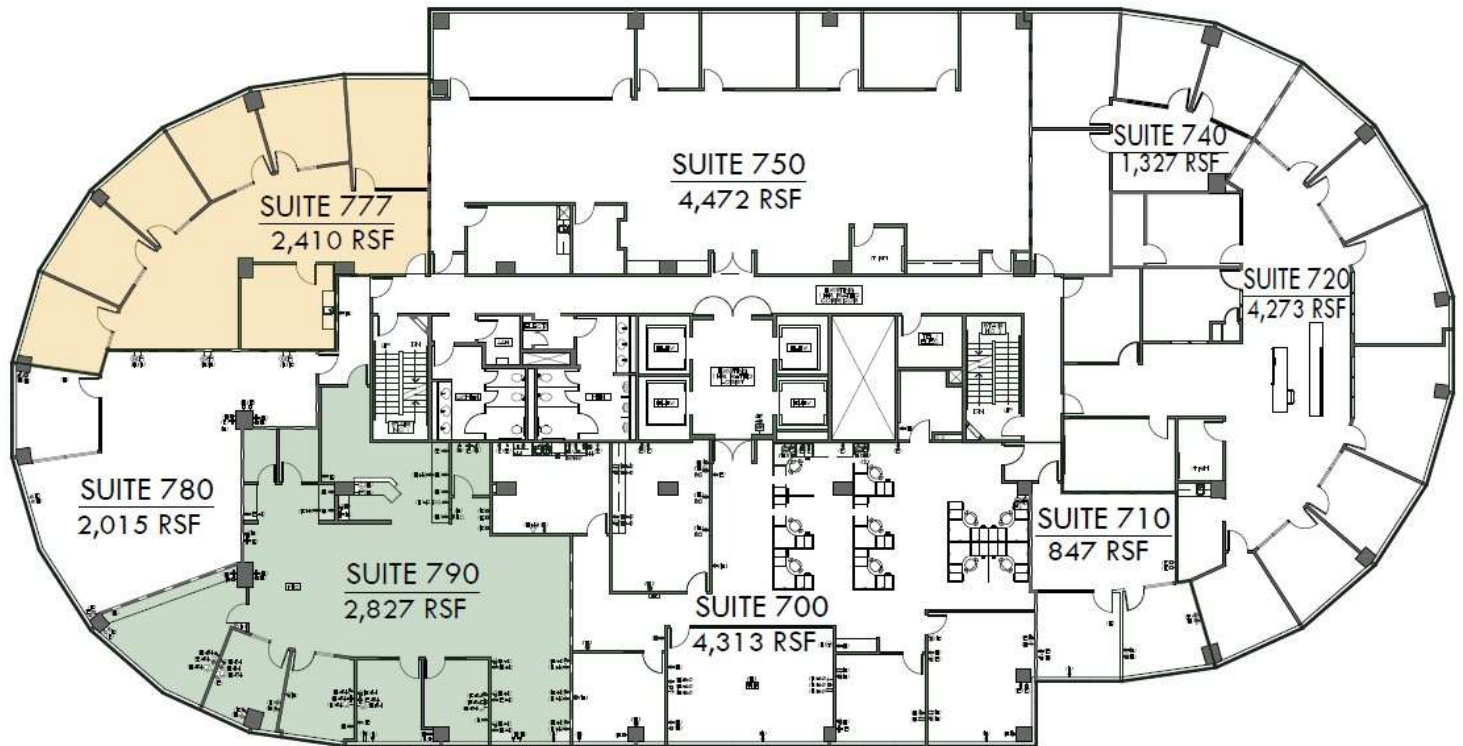
<p><b>Michael G. Rademaker</b>  <b>Founder / CEO   Lic. #00556679</b>  <b>Office Direct: 909-579-1340</b></p>	<p><b>Lynn Yangchana</b>  <b>Vice President, CCIM   Lic. #01518762</b>  <b>Office Direct: 909-579-1399</b></p>
---	--

\*All items on this page are deemed to be correct but should be viewed as reference only. MGR Real Estate, Inc. does not warranty/guaranty the validity of any information on this page.



**Empire Towers I**  
**3633 Inland Empire Blvd., Ontario, CA – 7<sup>th</sup> Floor**

**Suite 777: 2,410 RSF (Available) | Suite 790: 2,827 RSF (Available 4/1/2026)**



**7TH FLOOR PLAN**



**For more information, contact:**

**Michael G. Rademaker**  
Founder / CEO | Lic. #00556679  
Office Direct: 909-579-1340

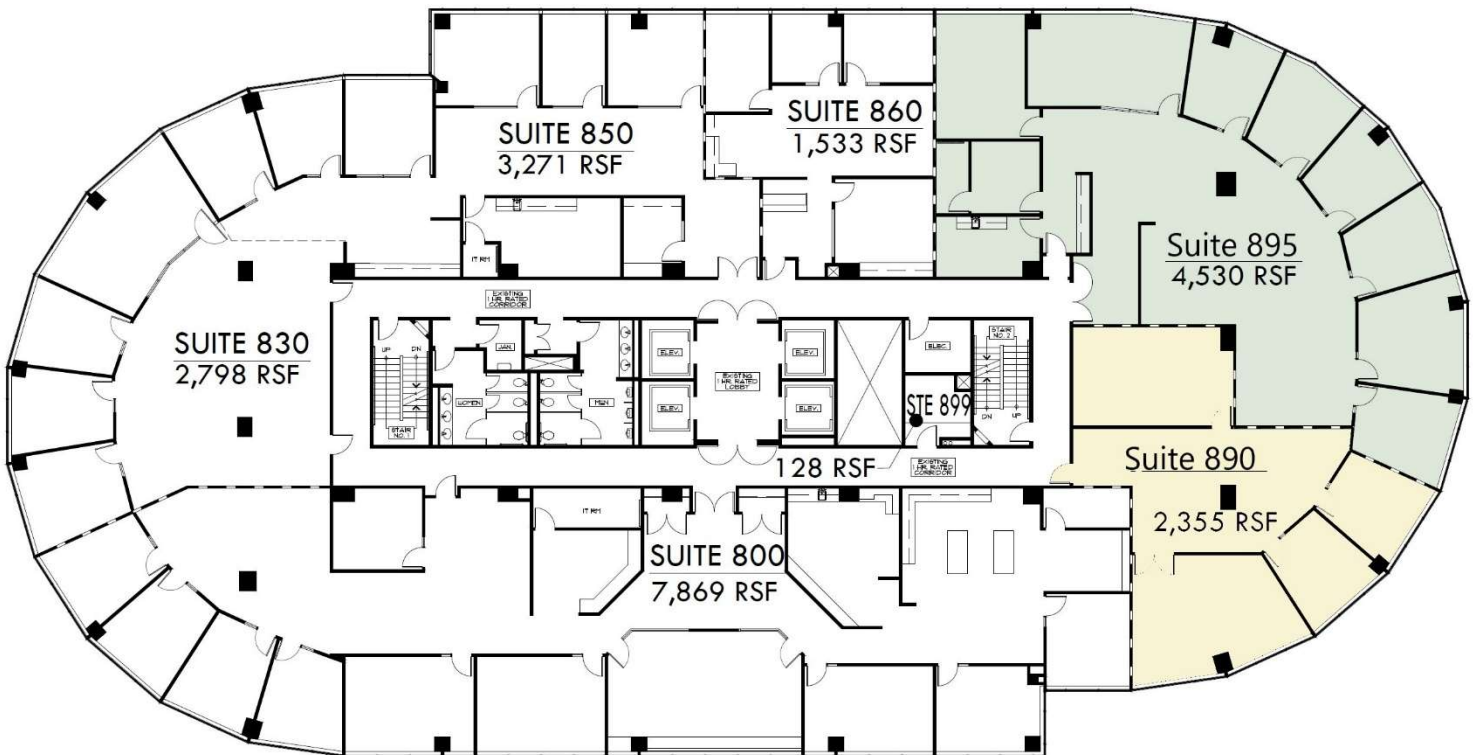
**Lynn Yangchana**  
Vice President, CCIM | Lic. #01518762  
Office Direct: 909-579-1399

\*All items on this page are deemed to be correct but should be viewed as reference only. MGR Real Estate, Inc. does not warranty/guaranty the validity of any information on this page.



**Empire Towers I**  
**3633 Inland Empire Blvd., Ontario, CA – 8<sup>th</sup> Floor**

**Suite 890: 2,355 RSF (Available) | Suite 895: 4,530 RSF (Available in 60 days)**



**8TH FLOOR PLAN**



**For more information, contact:**

**Michael G. Rademaker**  
Founder / CEO | Lic. #00556679  
Office Direct: 909-579-1340

**Lynn Yangchana**  
Vice President, CCIM | Lic. #01518762  
Office Direct: 909-579-1399

\*All items on this page are deemed to be correct but should be viewed as reference only. MGR Real Estate, Inc. does not warranty/guaranty the validity of any information on this page.