

FOR LEASE

3631 N Morrison Rd. Muncie, IN



PROPERTY HIGHLIGHTS

- 39,625 SF Medical Office Building
- 21,033 RSF of Medical Office Space Available For Lease
- Approximately 1 mile from Ball State University and 3 miles from IU Health Ball Memorial Hospital
- Well-maintained and professionally managed building
- Building signage available for uses over 10,000 SF
- Covered patient drop off
- Ample parking



3631 N Morrison Rd.
Muncie, IN 47304



CONTACT

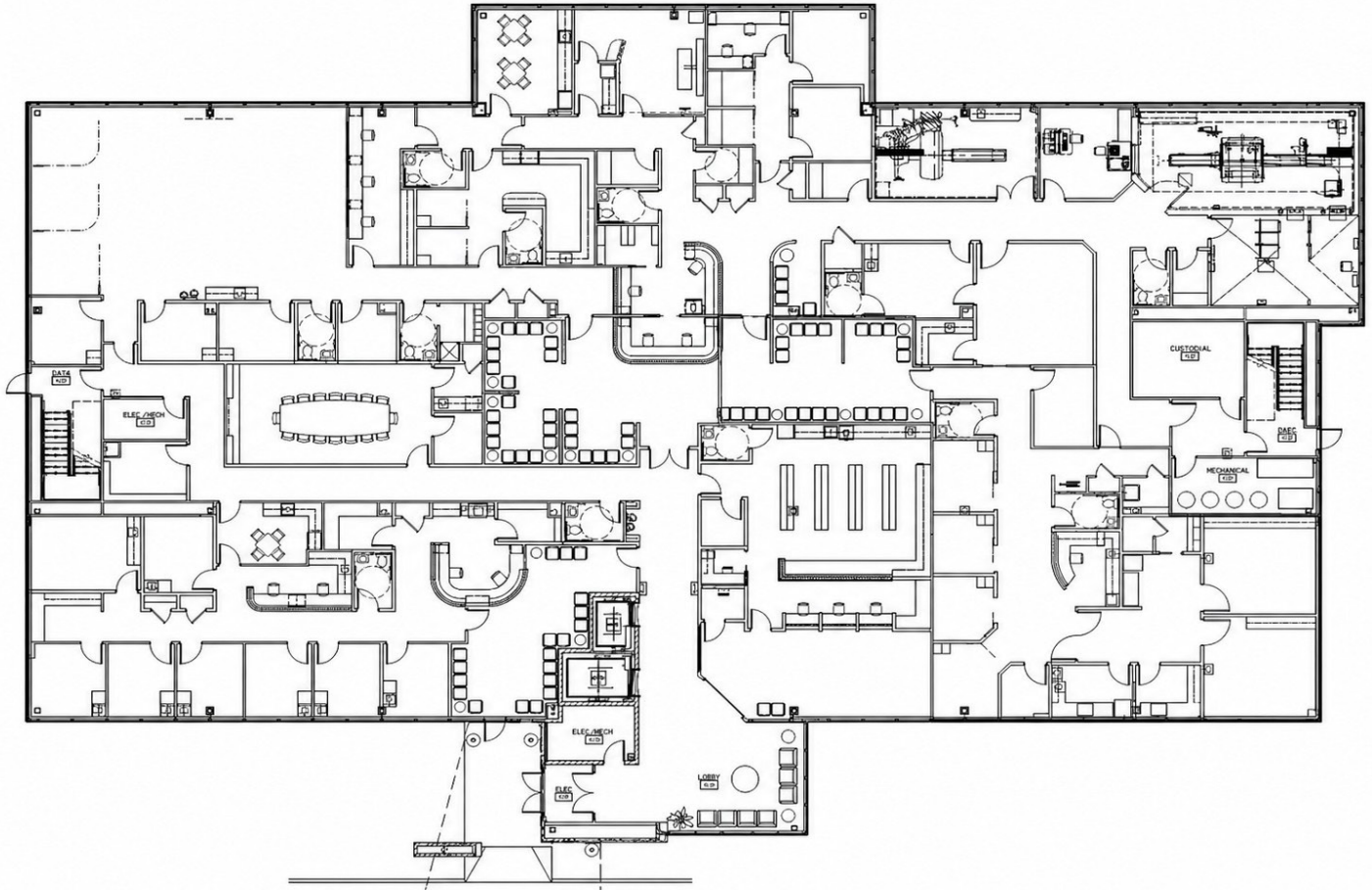
Jenny McAllister
Brokerage Associate
317-288-9022
JMAllister@cciin.com

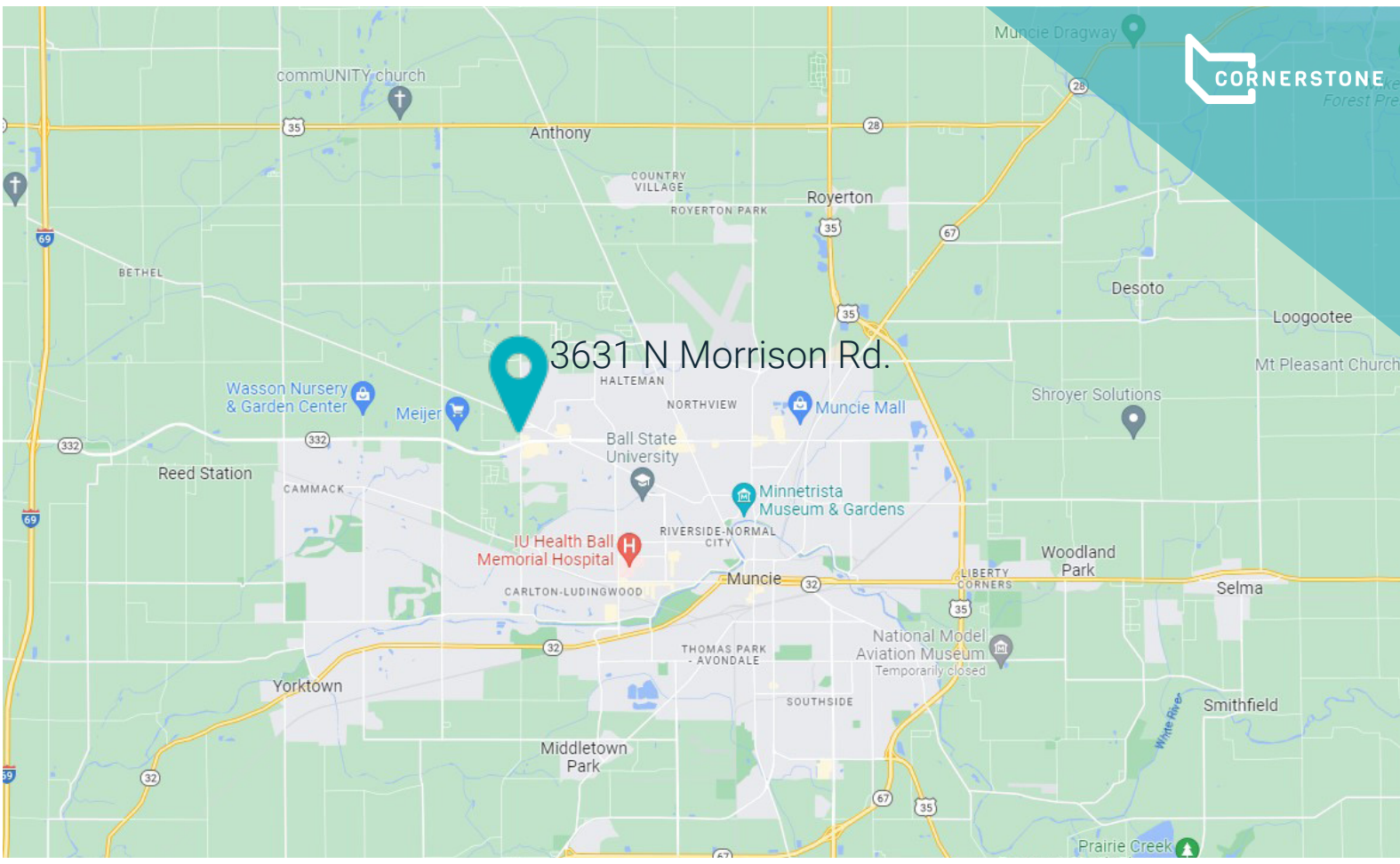
Ross Goyer
Executive Vice President, Brokerage
317-288-9011
RGoyer@cciin.com

Cornerstone Companies, Inc.
8902 N Meridian Street, Suite 205
Indianapolis, IN 46260


FLOOR PLAN

1st Floor






DEMOGRAPHICS

 **73,984**
Population

 **33**
Median Age

 **29,597**
Households

 **27,184**
Per Capita Income

 **45,324**
Median Household Income



CONTACT

Jenny McAllister
Brokerage Associate
317-288-9022
JMcaAllister@cciin.com

Ross Goyer
Executive Vice President, Brokerage
317-288-9011
RGoyer@cciin.com

Cornerstone Companies, Inc.
8902 N Meridian Street, Suite 205
Indianapolis, IN 46260