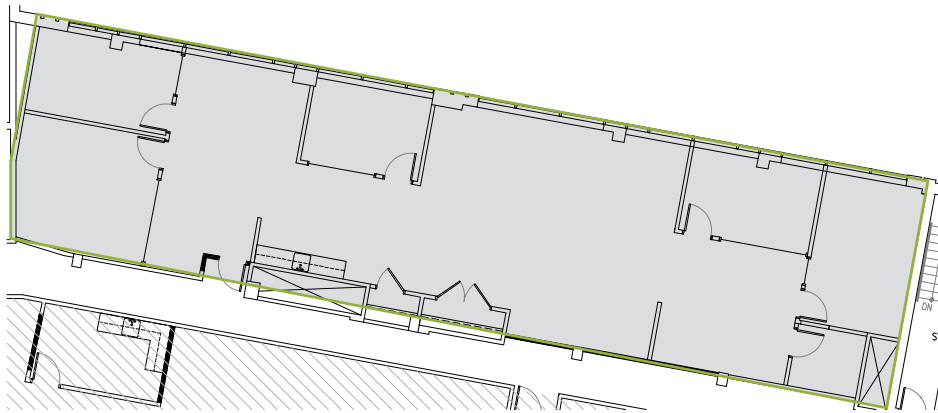


Fort Washington Collection

BROOKWOOD PHILADELPHIA PORTFOLIO

500 OFFICE CENTER DRIVE
Fort Washington, PA 19034



↑
SUITE 303
2,914 S.F.
SPEC SUITE

BUILDING HIGHLIGHTS

- Current availability: ranging from 1,318 s.f. to 8,870 s.f.
- Building size: 106,665 s.f.
- Parking: 4.69/1,000
- Energy Star-rated building
- Convenient, accessible location right off slip ramp of the PA Turnpike
- High ceilings and abundant natural light
- Access to tenant-only conferencing space and grab-n-go café
- Located in an increasingly popular residential area with regional rail access
- Spec suites available

FOR LEASING INFORMATION

Adam Shute

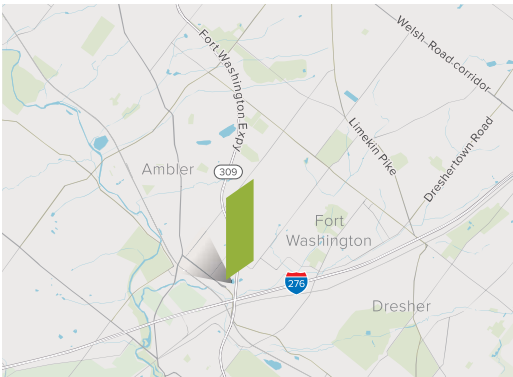
Executive Vice President
+1 610 249 2272
adam.shute@jll.com

Patrick Grenko

Executive Vice President
+1 215 399 1831
patrick.grenko@jll.com

Jones Lang LaSalle Brokerage, Inc.

550 E. Swedesford Road, Suite 260
Wayne, PA 19087
+1 610 249 2255



Although information has been obtained from sources deemed reliable, JLL does not make any guarantees, warranties or representations, express or implied, as to the completeness or accuracy as to the information contained herein. Any projections, opinions, assumptions or estimates used are for example only. There may be differences between projected and actual results, and those differences may be material. JLL does not accept any liability for any loss or damage suffered by any party resulting from reliance on this information. If the recipient of this information has signed a confidentiality agreement with JLL regarding this matter, this information is subject to the terms of that agreement. ©2026 Jones Lang LaSalle Brokerage, Inc. All rights reserved.

