

# 6491 SIERRA LN, DUBLIN

FOR SUBLEASE | SMALL FLEX SPACE IN SIERRA BUSINESS CENTER

**TCP**  
TOUCHSTONE  
COMMERCIAL PARTNERS



**CHRISTIAN DIGGS**  
415.710.0932 | [cdiggs@tcpre.com](mailto:cdiggs@tcpre.com)

**JACK DYKE**  
415.518.7523 | [jdyke@tcpre.com](mailto:jdyke@tcpre.com)

[WWW.TCPRE.COM](http://WWW.TCPRE.COM)

### PROPERTY SUMMARY

#### ADDRESS

6491 Sierra Lane, Dublin, CA 94568

#### AVAILABLE SPACE

+/- 2,023 Square Feet

#### RENTAL RATE

\$1.64 / SF / Month, Industrial Gross

#### AVAILABLE

Immediately

### BUILDING ATTRIBUTES

- + Four (4) Private Offices
- + One (1) Conference Room
- + One (1) Kitchenette
- + One (1) Roll-Up / Drive-in Door
- + One (1) Showroom
- + 16' 6" Clear Height
- + On-Site Parking





### FLOOR PLAN

+/- 2,023 Square Feet



### LOCATION OVERVIEW

Desirable Dublin location, walkable to nearby amenities and to surrounding neighborhoods.



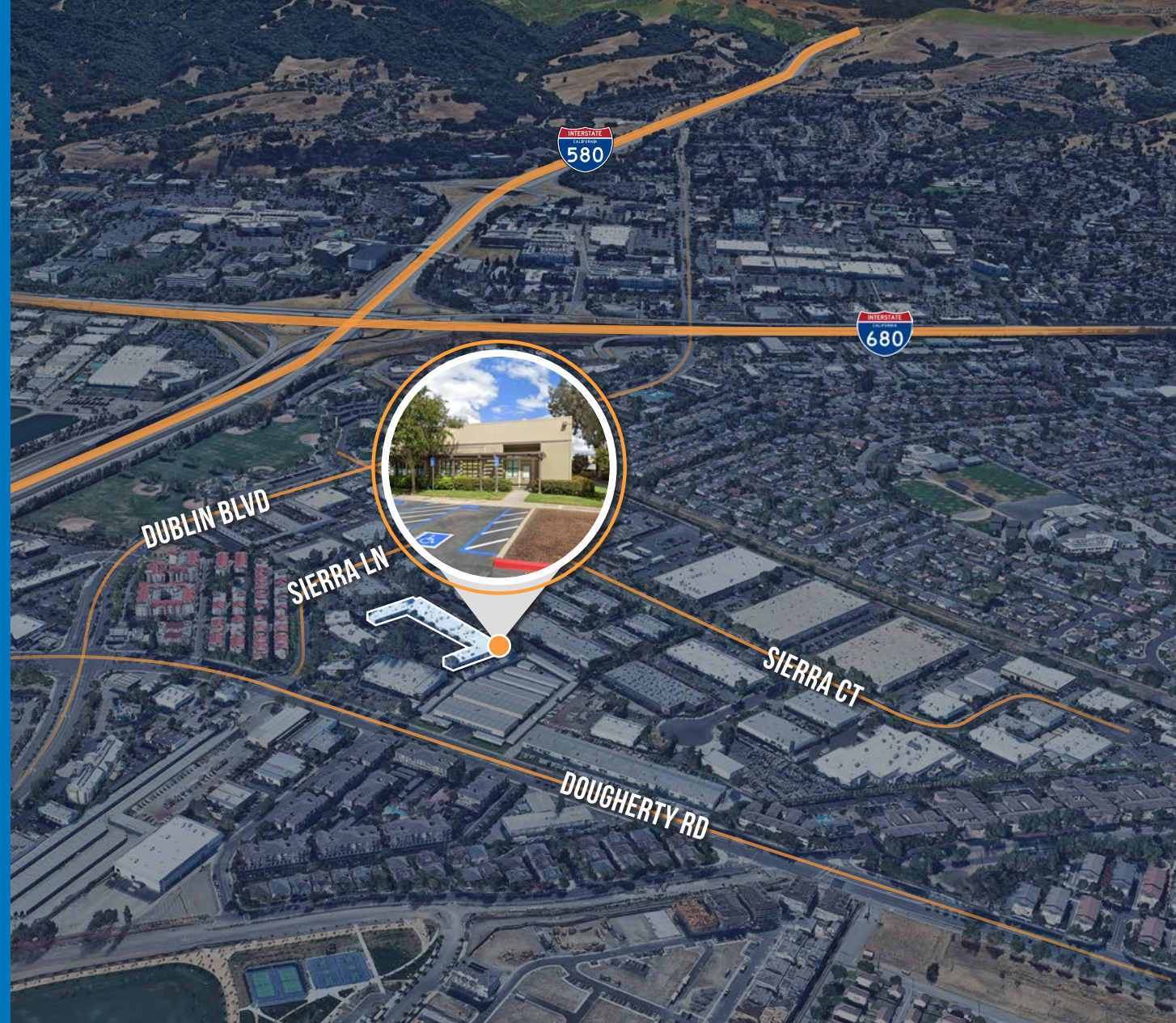
**04 MIN** to Sierra Ln Bus Stop  
**12 MIN** to Dublin Sports Grounds  
**20 MIN** to Dublin/Pleasanton BART



**07 MIN** to Stoneridge Mall  
**09 MIN** to Livermore Outlets  
**10 MIN** to Livermore Airport

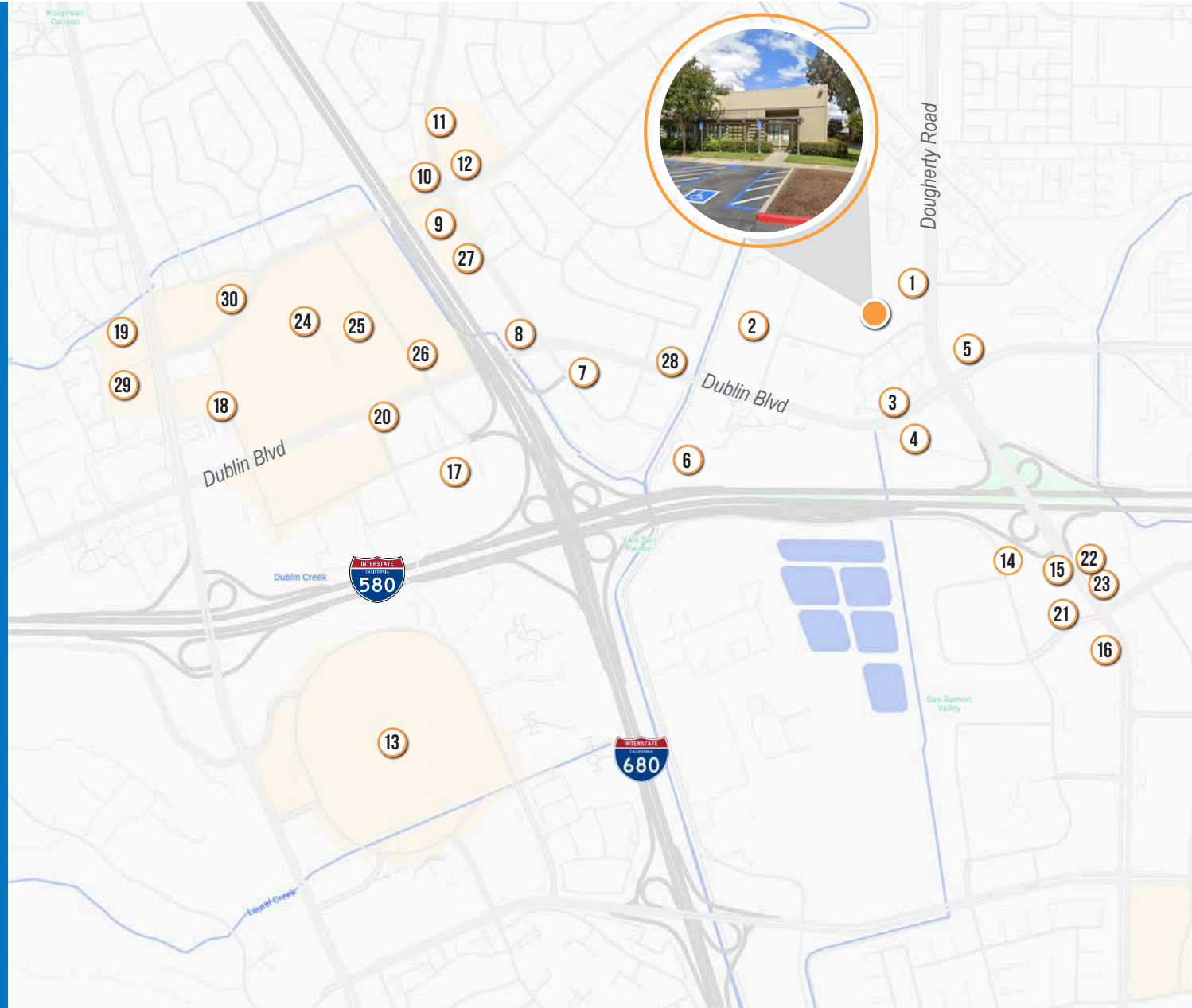


**03 MIN** to 580 On-Ramp  
**03 MIN** to 680 On-Ramp



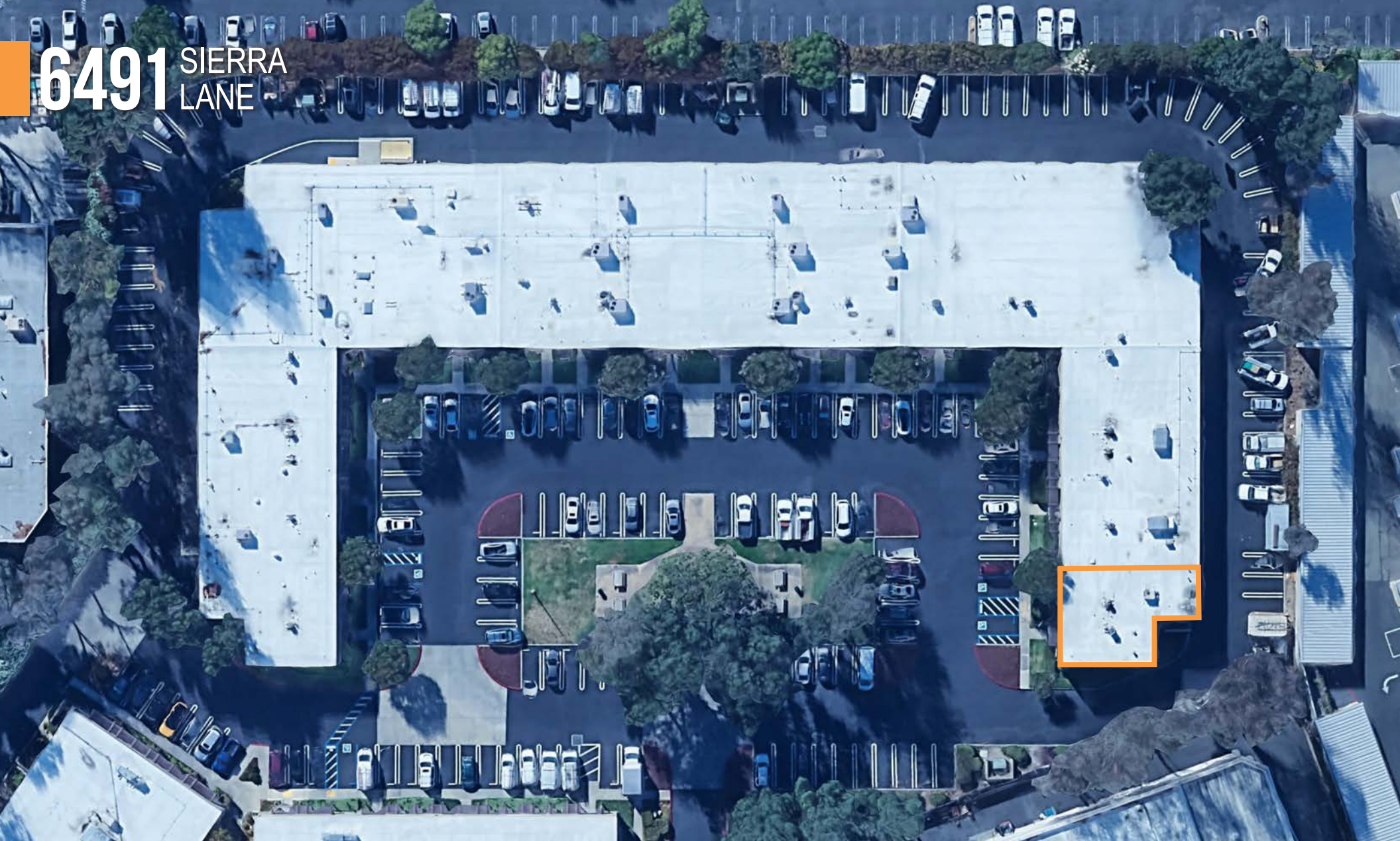
### NEARBY AMENITIES

- 1 Denica's Real Food Kitchen
- 2 K1 Speed Dublin
- 3 Paradise Biryani Pointe
- 4 Peacock Indian Cuisine
- 5 IHOP
- 6 Dublin Library
- 7 Nothing Bundt Cakes
- 8 McDonald's
- 9 Raya
- 10 Boba X
- 11 Taqueria Los Pericos
- 12 Dublin Skillet
- 13 Stoneridge Shopping Center
- 14 In-N-Out Burger
- 15 Chick-fil-A
- 16 Black Bear Diner Pleasanton
- 17 Delah Coffee
- 18 Paris Baguette
- 19 East Bay Buffet
- 20 Amakara
- 21 Starbird Chicken
- 22 Denny's
- 23 Burger King
- 24 Target
- 25 Dublin Place
- 26 Panda Express
- 27 Three Sheets Craft Beer Bar
- 28 Athens Burger Restaurant
- 29 Burma! Burma
- 30 Golden Sand Harbor





**6491** SIERRA  
LANE



**TCP**  
**TOUCHSTONE**  
COMMERCIAL PARTNERS

Corp. Lic. 01112906  
www.tcppe.com

**CHRISTIAN DIGGS** DRE # 01865276  
415.710.0932 | [cdiggs@tcppe.com](mailto:cdiggs@tcppe.com)

**JACK DYKE** DRE # 02255631  
415.518.7523 | [jdyke@tcppe.com](mailto:jdyke@tcppe.com)

This document has been prepared by Touchstone Commercial Partners for advertising and general information only. Touchstone Commercial Partners makes no guarantees, representations or warranties of any kind, expressed or implied, regarding the information including, but not limited to, warranties of content, accuracy and reliability. Any interested party should undertake their own inquiries as to the accuracy of the information. Touchstone Commercial Partners excludes unequivocally all inferred or implied terms, conditions and warranties arising out of this document and excludes all liability for loss and damages arising there from. This publication is the copyrighted property of Touchstone Commercial Partners and/or its licensor(s). ©2026. All rights reserved.