

153

FENCHURCH STREET

LONDON EC3

810 sq ft
Newly Refurbished 1st Floor

THE BUILDING

PERIOD CHARM IN THE CITY

Situated in the heart of the City of London, 153 Fenchurch Street offers premium office accommodation in a prime City location.

Dating back to 1880, the building retains its distinctive Victorian red-brick façade and characterful brickwork. Behind the historic exterior, the interior has been comprehensively refurbished to deliver bright, contemporary workspace designed for today's businesses.



THE LOCATION

VIBRANT & CONNECTED

The building is surrounded by a wide range of cafés, restaurants, bars and retail amenities, while also benefiting from excellent connectivity, with Fenchurch Street, Monument and Bank stations all within easy walking distance.



Walking times

 3 MINS 	 8 MINS 	 6 MINS
Fenchurch Street	Monument	Aldgate
 6 MINS 	 6 MINS 	 8 MINS
Bank	Tower Hill	Liverpool Street

Restaurants

- 01 14 Hills
- 02 MBER
- 03 Bob Bob City
- 04 Blacklock
- 05 Keepers Kitchen
- 06 Duck & Waffle
- 07 The Mercer
- 08 The Wolseley
- 02 Wagtail

Bars & Cafés

- 01 Vagabond
- 02 Swingers
- 03 BrewDog
- 04 London Cocktail
- 05 Eastcheap Records
- 06 Black Sheep Coffee
- 07 Joe & The Juice
- 08 Curators Coffee
- 09 Blank Street Coffee

Fitness

- 01 Third Space City
- 02 Pure Gym
- 03 1Rebel
- 04 Virgin Active

Hotels

- 01 Pan Pacific
- 02 The Ned
- 03 Threadneedles

SPECIFICATION

MODERN CITY WORKSPACE



Entrance via feature staircase



Dedicated tea point



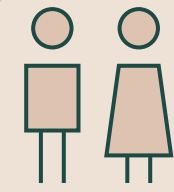
Office space with views onto Fenchurch Street



Fully fitted
option



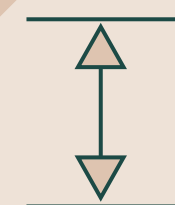
Air
conditioning



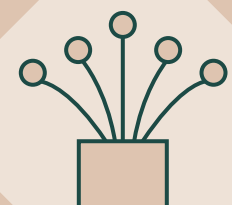
Refurbished
WCs



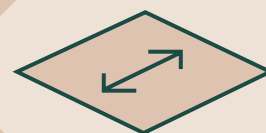
Shower
facilities



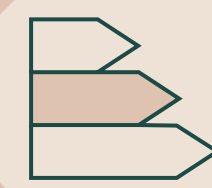
High
ceilings



Full fibre
connectivity



Open plan
layouts



EPC
B

The workspace benefits from excellent natural light and an efficient open plan layout, creating a productive and comfortable working environment.

A striking feature entrance staircase sets the tone on arrival, leading to modern office floors complemented by a tea point and newly refurbished WCs.

The space also enjoys attractive views across the City, including towards the iconic Walkie Talkie building.

A fully fitted option is available, with the final layout able to be tailored to suit occupier requirements.

ACCOMMODATION

FLEXIBLE & OPEN PLAN

FIRST FLOOR

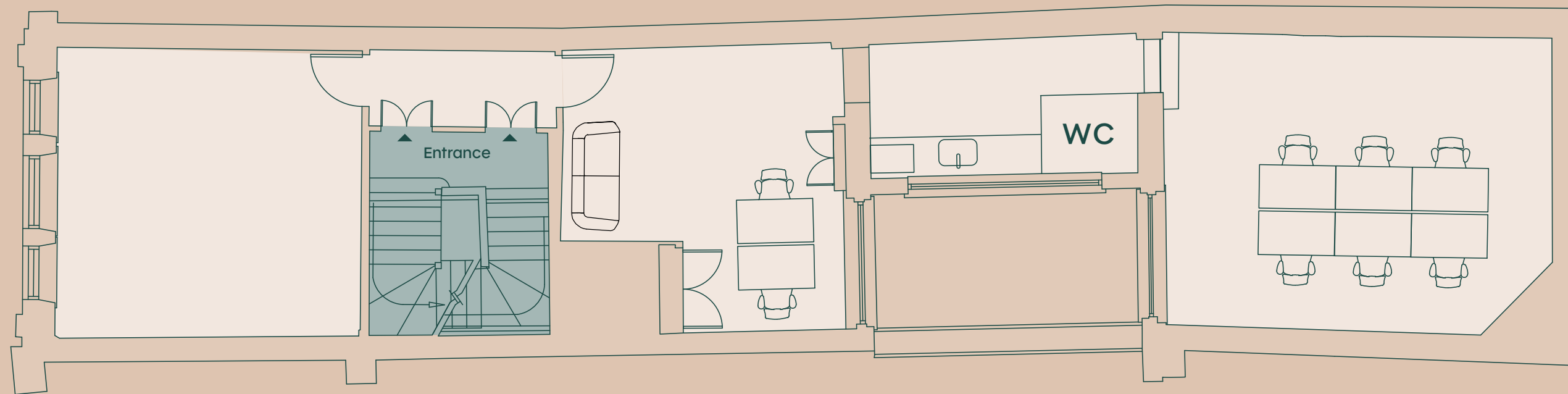
810 sq ft / 75.25 sq m



Shower facilities



Feature staircase



Fenchurch Street

KEY

- ◇ OFFICE
- ◆ CORE

Floor plan not to scale. For indicative purposes only.



Shared kitchen/break out



CONTACT

FURTHER INFO

RENT

£49.00 psf

TERMS

Upon application

LEASE

A new lease is available
direct from the Landlord on
terms to be agreed

VIEWINGS

For further information or to
arrange a viewing, contact
the sole agents

KOOPMANS

0192 385 3749

Eli Younger

0208 044 3494
eliy@koopmans.co.uk

Misrepresentations Act 1967 – Whist all the information in this brochure is believed to be correct, neither the agent nor the client guarantee its accuracy nor is it intended to form any part of any contract. All areas quoted are approximate. April 2026.

Designed & Produced by Cre8te – 020 3468 5760 – cre8te.london