

3625 Agricultural Center Dr.

St. Augustine, FL 32092

INDUSTRIAL WAREHOUSE - FOR LEASE

COMING SOON - MAY DELIVERY DATE



Highlights:

- Wet Sprinkler System
- Ceiling Height: 19'-0" - 22'-0"
- OH Doors: 12' x 14'
- Power: 3-Phase/240V/1600 Amps
- Build-to-suit office space
- Security System
- **Delivery Date: May 2026**

Summary:

Newly constructed warehouse space being delivered in May 2026. The property is located just West of I-95 making this an ideal, central location for any user seeking office warehouse with ample parking, and potential outdoor storage needs in Saint Augustine.

Offering Summary:

Asking Price:	\$16.00/SF (NNN)
NNN's:	\$2.48/SF
Total Building Size:	26,600 SF
Available Space:	5,320 - 26,600 SF
Lot Size:	2 AC
Zoning:	IW (Industrial)

KYLE@VANCAMPCOMMERCIAL.COM

3625 Agricultural Center Dr.

Interior Photos



KYLE@VANCAMPCOMMERCIAL.COM

THE INFORMATION CONTAINED HEREIN WAS OBTAINED FROM RELIABLE OUTSIDE SOURCES; VANCAMP COMMERCIAL PROPERTIES MAKES NO GUARANTEES, WARRANTIES OR REPRESENTATIONS AS TO THE COMPLETENESS OR ACCURACY THEREOF. THE PRESENTATION OF THE SUBJECT PROPERTY IS SUBMITTED SUBJECT TO ERRORS, OMISSION, CHANGES OF PRICE, OR CONDITIONS, PRIOR TO SALE OR LEASE, OR WITHDRAWAL WITHOUT NOTICE..

3625 Agricultural Center Dr.

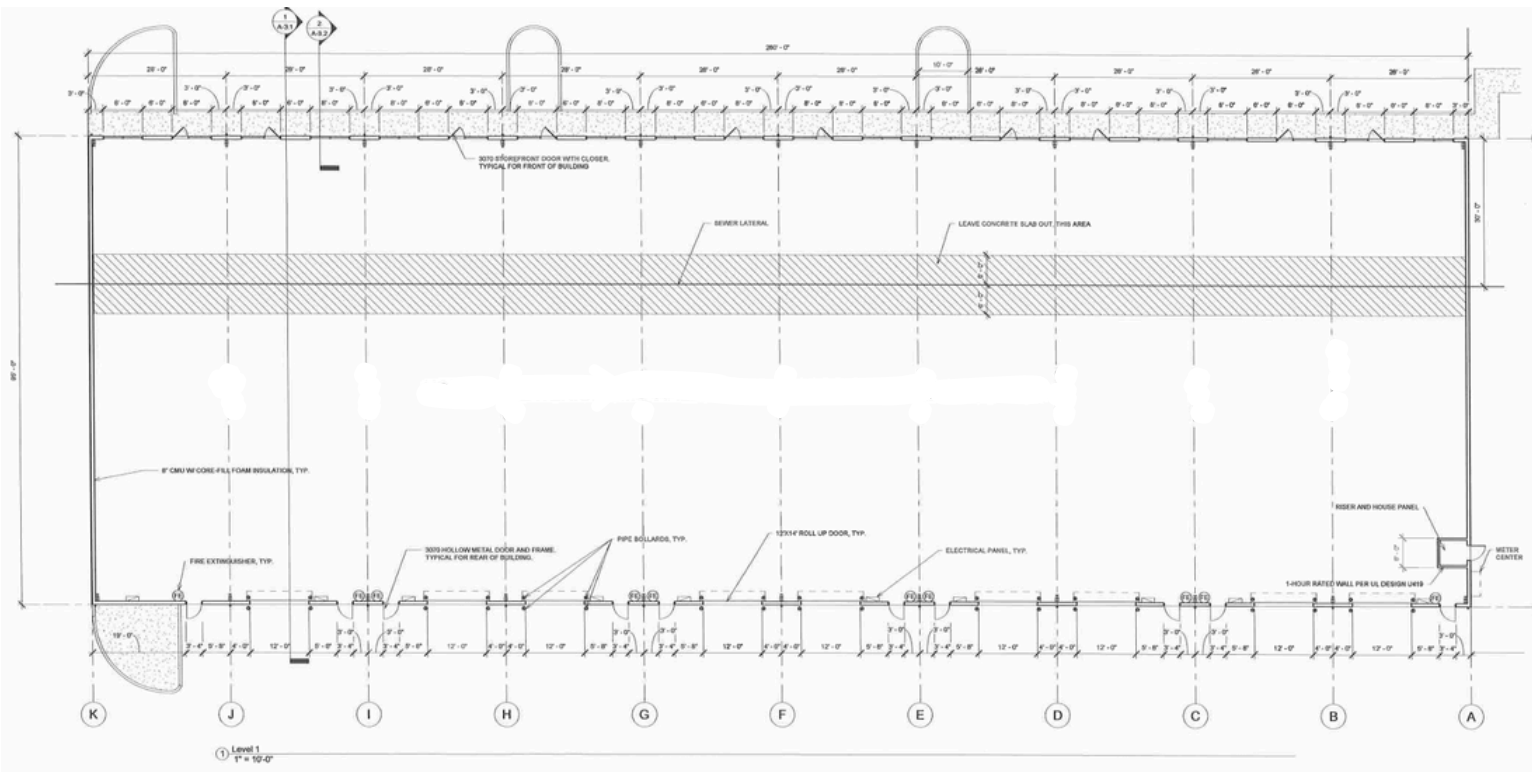
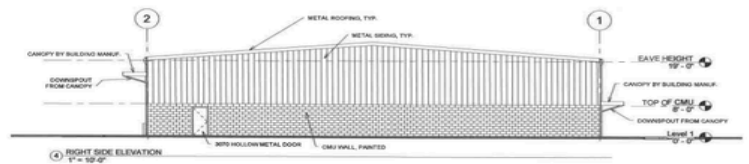
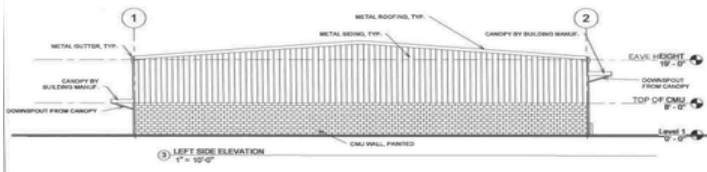
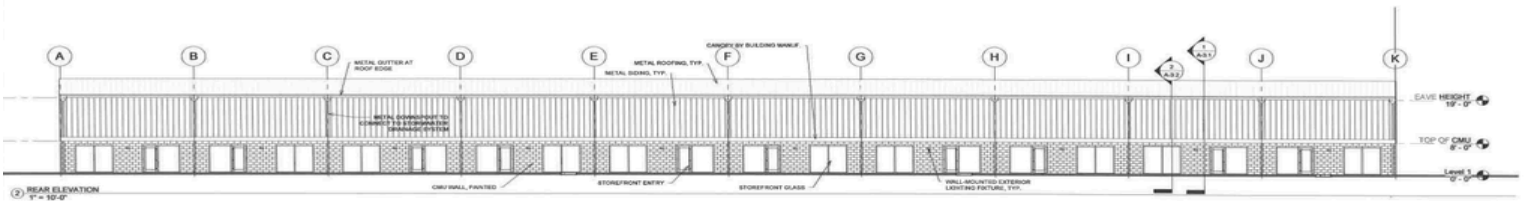
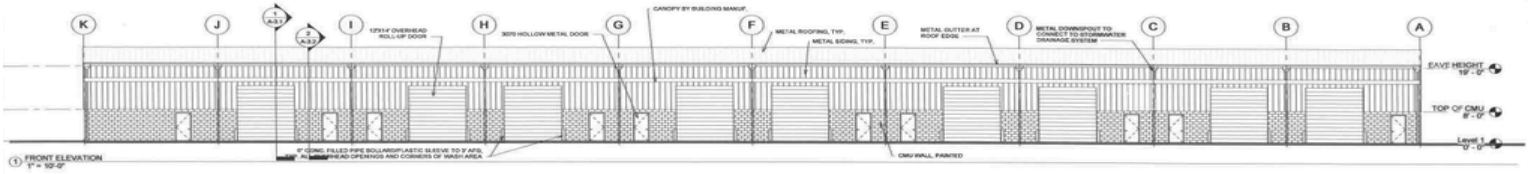
Exterior Photos



KYLE@VANCAMPCOMMERCIAL.COM

THE INFORMATION CONTAINED HEREIN WAS OBTAINED FROM RELIABLE OUTSIDE SOURCES; VANCAMP COMMERCIAL PROPERTIES MAKES NO GUARANTEES, WARRANTIES OR REPRESENTATIONS AS TO THE COMPLETENESS OR ACCURACY THEREOF. THE PRESENTATION OF THE SUBJECT PROPERTY IS SUBMITTED SUBJECT TO ERRORS, OMISSION, CHANGES OF PRICE, OR CONDITIONS, PRIOR TO SALE OR LEASE, OR WITHDRAWAL WITHOUT NOTICE..

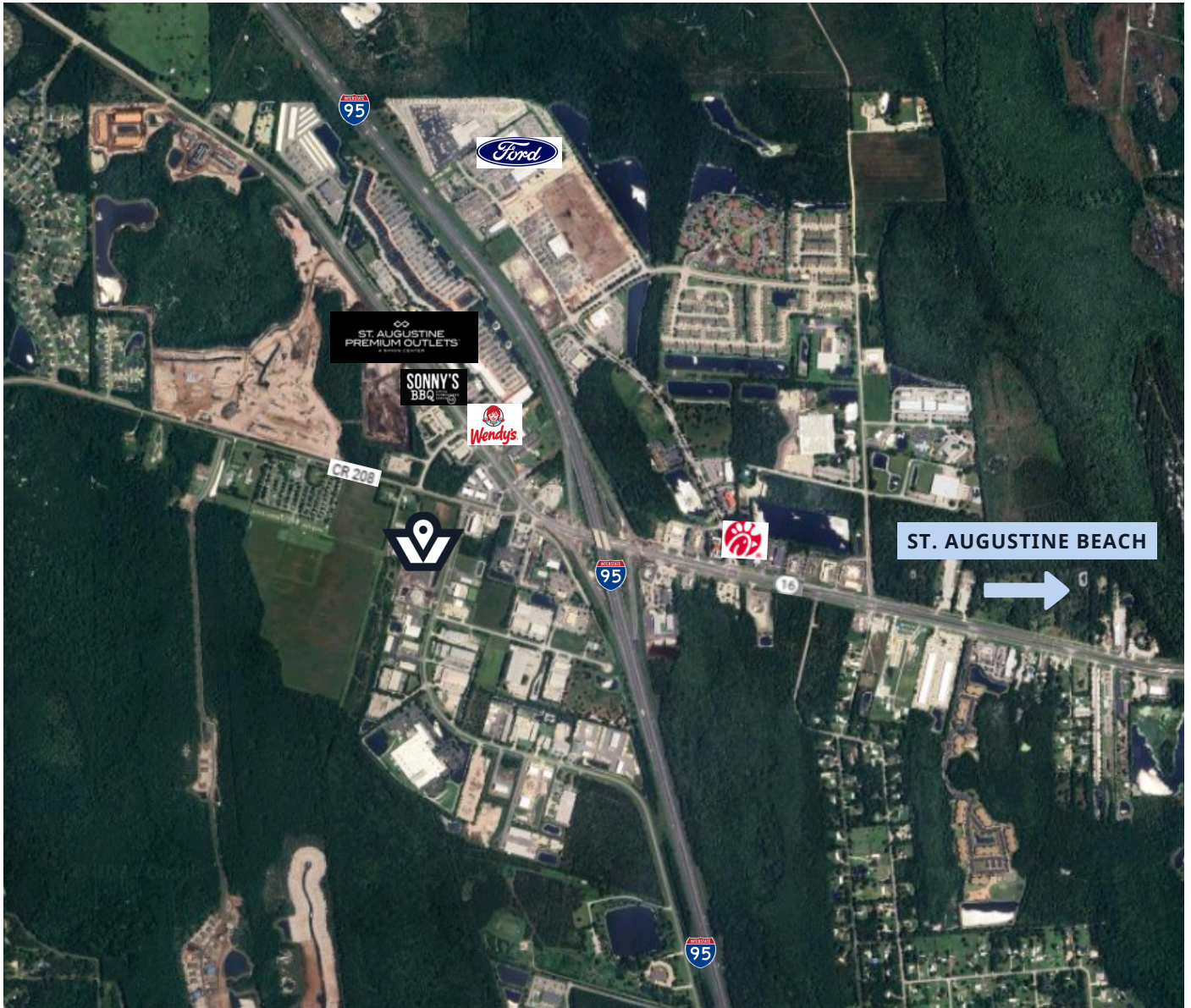
3625 Agricultural Center Dr. Elevation Dwg. & Floor Plan



KYLE@VANCAMPCOMMERCIAL.COM

THE INFORMATION CONTAINED HEREIN WAS OBTAINED FROM RELIABLE OUTSIDE SOURCES; VANCAMP COMMERCIAL PROPERTIES MAKES NO GUARANTEES, WARRANTIES OR REPRESENTATIONS AS TO THE COMPLETENESS OR ACCURACY THEREOF. THE PRESENTATION OF THE SUBJECT PROPERTY IS SUBMITTED SUBJECT TO ERRORS, OMISSION, CHANGES OF PRICE, OR CONDITIONS, PRIOR TO SALE OR LEASE, OR WITHDRAWAL WITHOUT NOTICE..

3625 Agricultural Center Dr. Property Map



Kyle VanCamp
BROKER | OWNER

(904) 604 8189
kyle@vancampcommercial.com

1505 Dennis St., Ste 105
Jacksonville, FL 32204



KYLE@VANCAMPCOMMERCIAL.COM