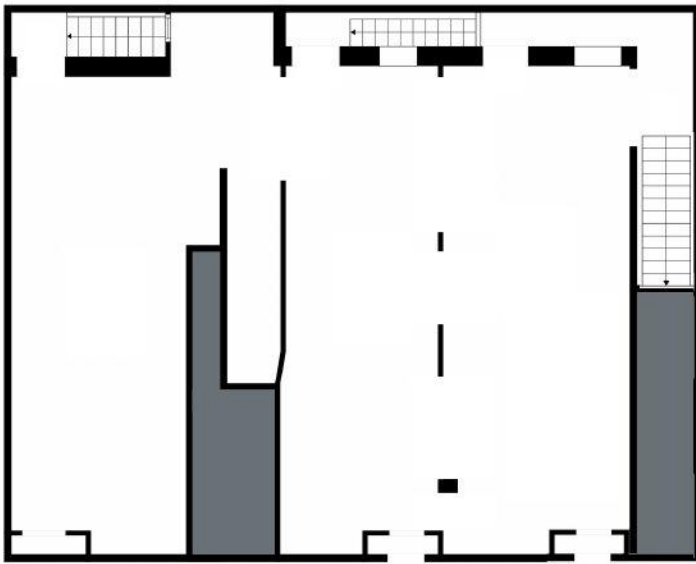


4-6 Bleecker St

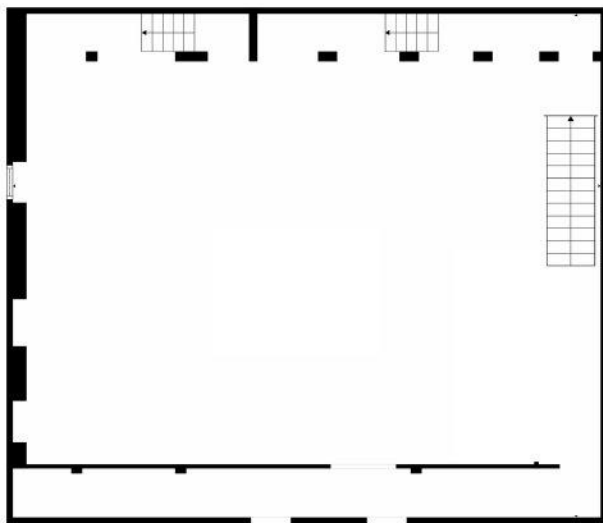
NoHo Manhattan



 SALMAN
CAPITAL



Ground Level



Lower Level

Space Available 600 SF -3,600 SF

Bleecker St Frontage 50 FT

Ceiling Height 12'

Neighborhood NoHo

Cross-Streets Bowery and Elizabeth St

Previously Tenant Bar / Restaurant

4-6 Bleecker Street

A rare opportunity to lease one of NoHo's most storied retail spaces, prominently situated on Bleecker Street between Bowery and Lafayette Street. Following a major landlord renovation, the space is delivered as a pristine vanilla box with a newly designed storefront and direct access to a lower level – ready for a tenant's vision. With a rich history that includes flagship retail from J.Crew, the celebrated speakeasy Ghost Donkey, the acclaimed Saxon + Parole, and Madam Geneva, this address carries an undeniable cultural cachet in one of Manhattan's most dynamic and high-profile corridors

No Standing



NYC
OpenStreets
Full Closure

Bleecker Street Open Street - between Mott and Bowery

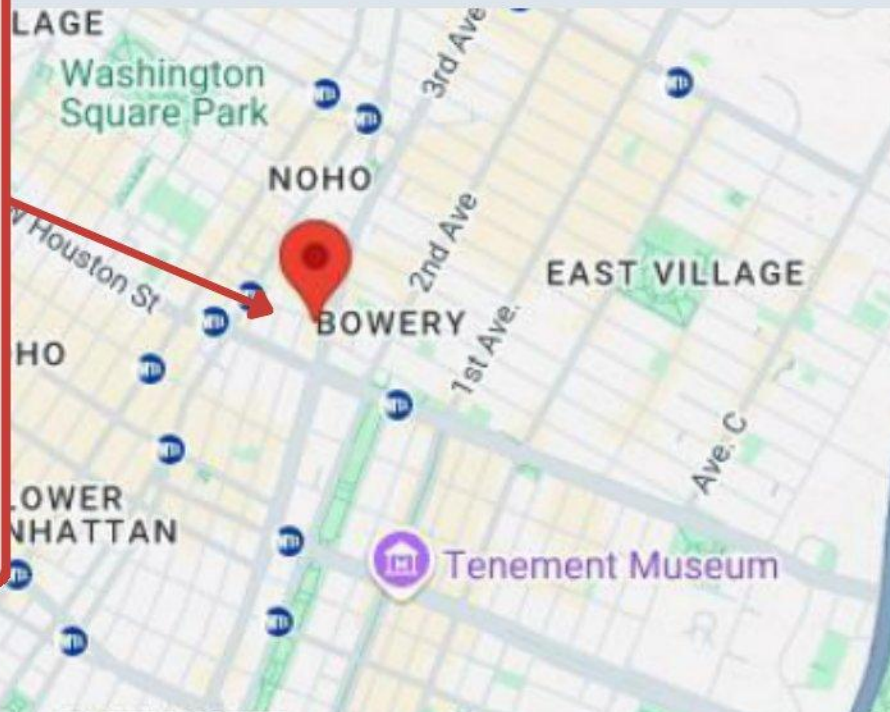
Days:

Monday - Thursday 5pm-11pm, Friday 4pm-11pm, Saturday-Sunday 1pm-11pm

Times:

Monday - Thursday 5pm-11pm, Friday 4pm-11pm, Saturday-Sunday 1pm-11pm

Please visit nyc.gov/openstreets for more information.



PROPOSED NEW STOREFRONT RENDERING



PROPOSED NEW STORE ELEVATION



201-680-7115
Leasing@SalmanCapital.com
SalmanCapital.com