



18818 Teller Avenue
Irvine, CA 92612

For leasing information,
please contact:

PETER JOYCE

Vice President

T: 949.203.3035

peter.joyce@streamrealty.com

Lic. 02001428

MICHAEL JOHNSON

Associate

949.732.3750

michael.johnson@streamrealty.com

Lic. 02230105



Owned by:

Dolphin Partners

AVAILABILITIES

SUITE	SF	CONTIG.	SUITE DESCRIPTION	PSF
Suite 102	2,853	8,165	3 offices, large open work area, and kitchenette.	\$2.50
Suite 170	5,312	8,165	9 offices, open work area, conference room, storage area, and kitchen with break area.	\$2.50
Suite 110	1,908	—	4 offices and large open work area.	\$2.50
Suite 270	2,918	—	Glassline on 2 sides, 3 offices, conference room, kitchen, reception, and large open work area.	\$2.50



Teller

BUILDING

18818 Teller Avenue
Irvine, CA 92612

For leasing information,
please contact:

PETER JOYCE

Vice President

T: 949.203.3035

peter.joyce@streamrealty.com

Lic. 02001428

MICHAEL JOHNSON

Associate

949.732.3750

michael.johnson@streamrealty.com

Lic. 02230105

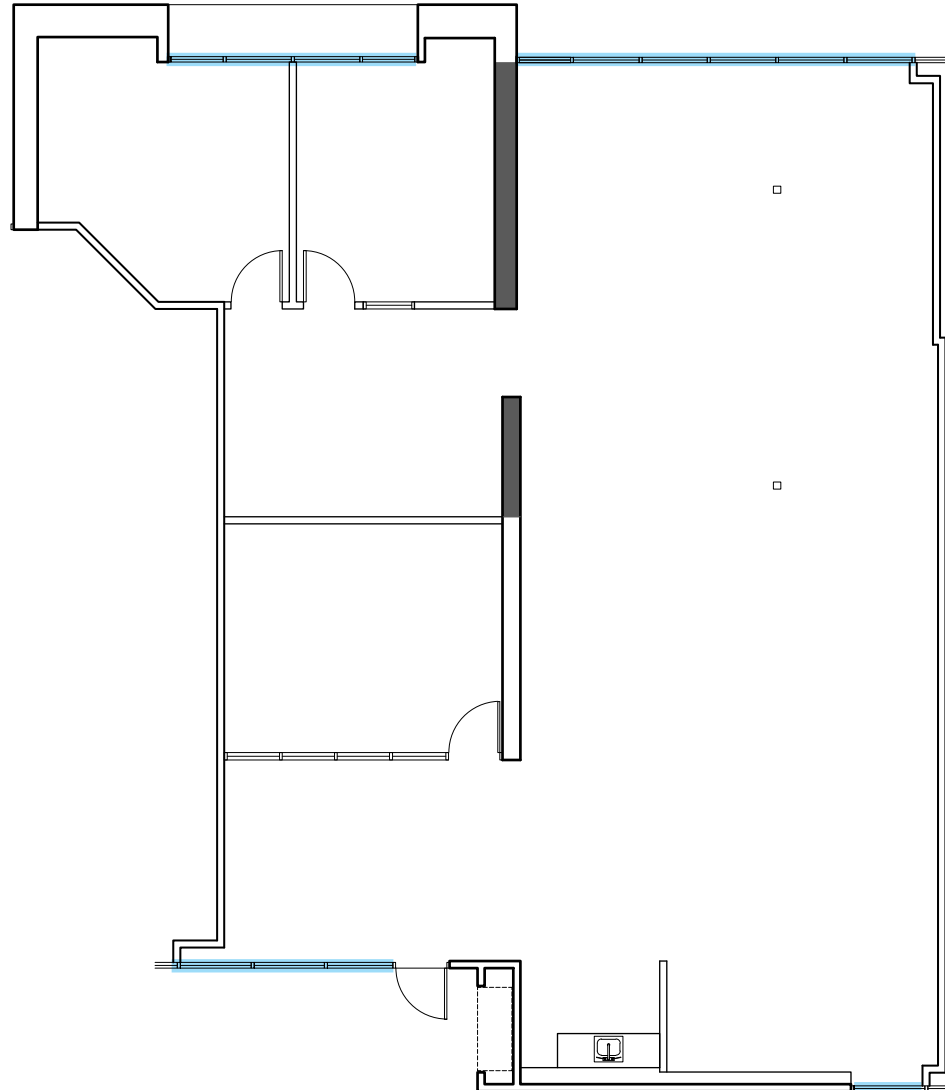


Owned by:

Dolphin Partners

SUITE 102

2,853 RSF



Teller

BUILDING

18818 Teller Avenue
Irvine, CA 92612

For leasing information,
please contact:

PETER JOYCE

Vice President

T: 949.203.3035

peter.joyce@streamrealty.com

Lic. 02001428

MICHAEL JOHNSON

Associate

949.732.3750

michael.johnson@streamrealty.com

Lic. 02230105

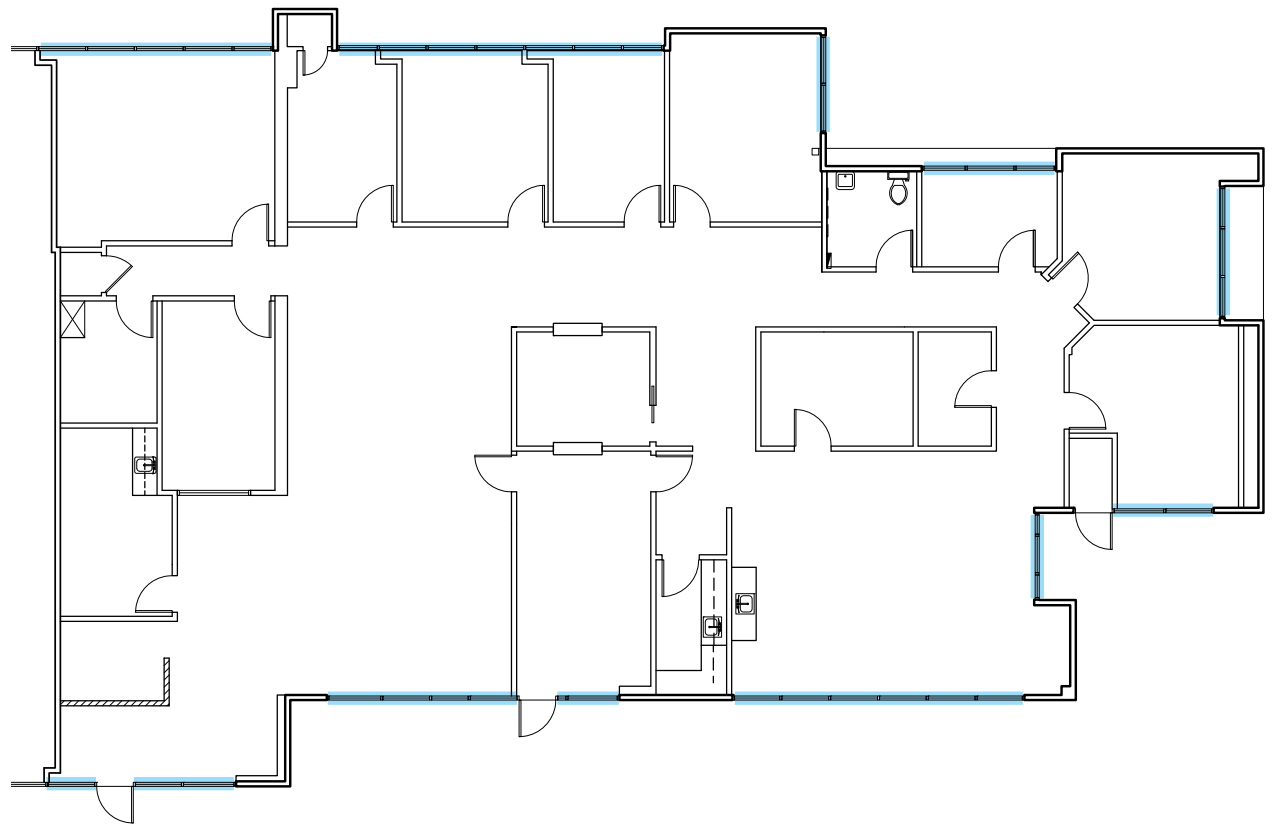


Owned by:

Dolphin Partners

SUITE 170

5,312 RSF



Teller

BUILDING

18818 Teller Avenue
Irvine, CA 92612

For leasing information,
please contact:

PETER JOYCE

Vice President

T: 949.203.3035

peter.joyce@streamrealty.com

Lic. 02001428

MICHAEL JOHNSON

Associate

949.732.3750

michael.johnson@streamrealty.com

Lic. 02230105

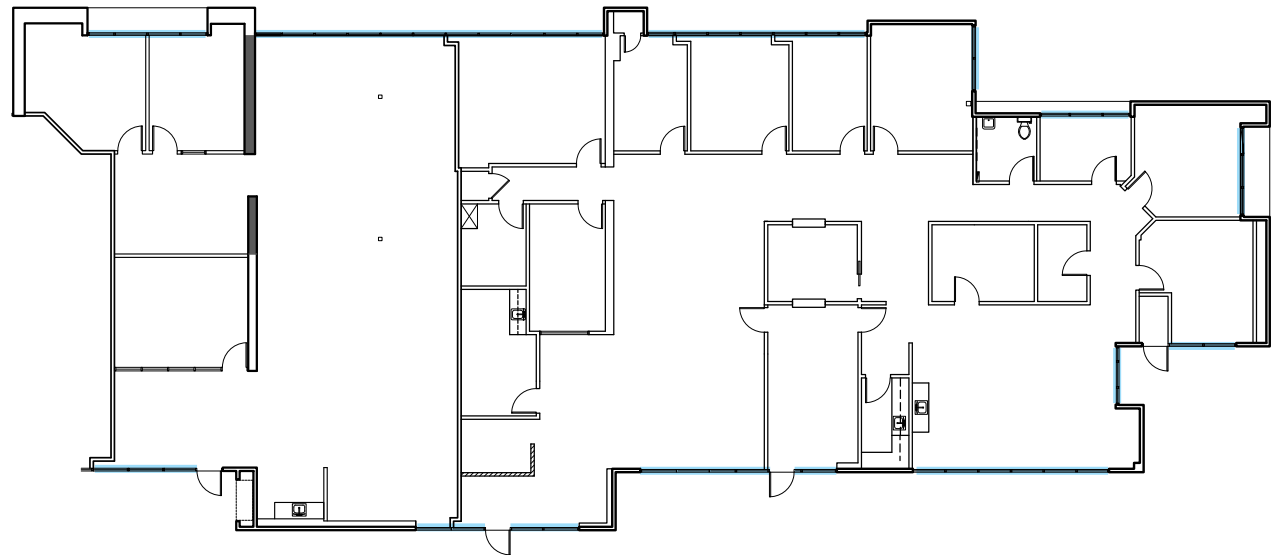


Owned by:

Dolphin Partners

SUITE 102 & 170

8,165 RSF



Teller

BUILDING

18818 Teller Avenue
Irvine, CA 92612

For leasing information,
please contact:

PETER JOYCE

Vice President

T: 949.203.3035

peter.joyce@streamrealty.com

Lic. 02001428

MICHAEL JOHNSON

Associate

949.732.3750

michael.johnson@streamrealty.com

Lic. 02230105

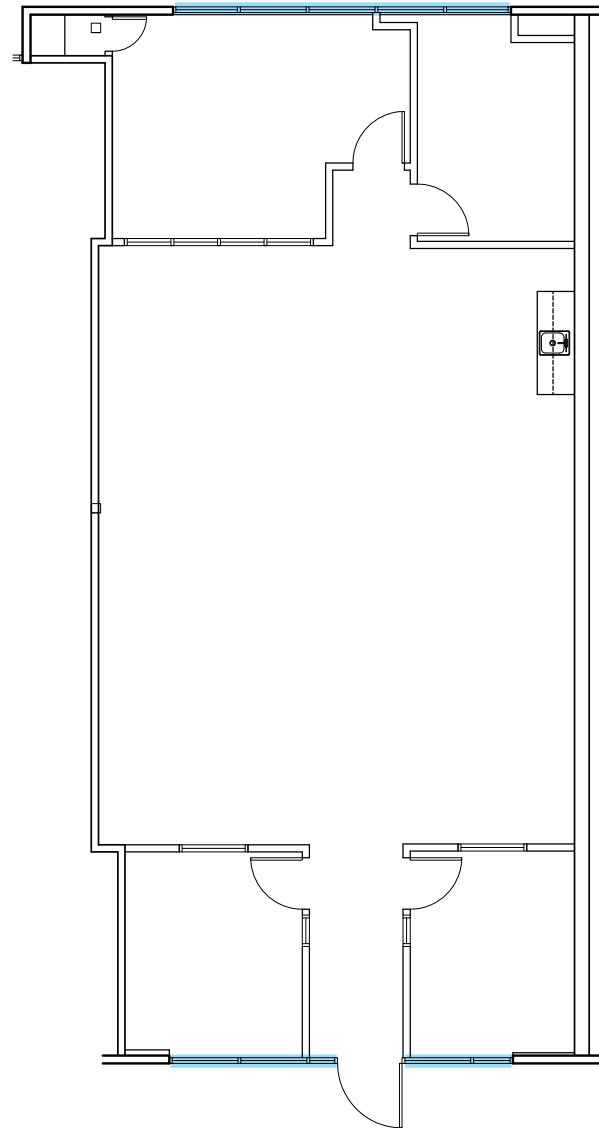


Owned by:

Dolphin Partners

SUITE 110

1,908 RSF



Teller

BUILDING

18818 Teller Avenue
Irvine, CA 92612

For leasing information,
please contact:

PETER JOYCE

Vice President

T: 949.203.3035

peter.joyce@streamrealty.com

Lic. 02001428

MICHAEL JOHNSON

Associate

949.732.3750

michael.johnson@streamrealty.com

Lic. 02230105



Owned by:

Dolphin Partners

SUITE 270

2,918 RSF

