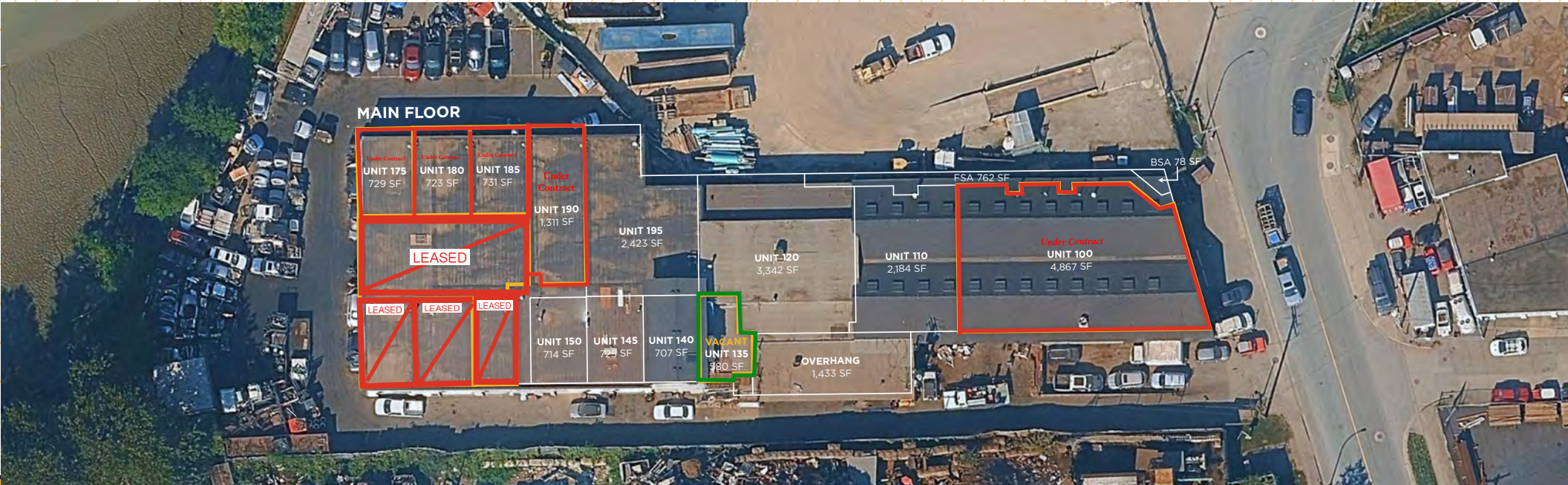


FOR LEASE: INDIVIDUAL SMALL BAY GRADE LOADING INDUSTRIAL UNITS

557 SF - 4,867 SF

1 Unit Remaining
#135 - 580 SF



**11951 MITCHELL ROAD,
RICHMOND, BC**

CONTACT INFORMATION:

MAX WILTSHIRE
Associate Vice President
Personal Real Estate Corporation
+1 604 640 5810
max.wiltshire@cushwake.co m

DEREK NYSTROM
Vice President
Personal Real Estate Corporation
Corporation+1 604 644 8652
derek.nystrom@cushwake.com



11951 Mitchell Road, Richmond, BC

SALIENT DETAILS

Address: 11951 Mitchell Road, Richmond, BC

PID: 011-920-912 & 003-682-650

Submarket: Richmond

Industrial Node: Mitchell Island

Ceiling Height 13' - 14'

Signage Opportunities: Yes

Parking stalls: Negotiable (1 point of ingress and egress along Mitchell Road)

Zoning: I - Industrial Zone

OCP: Bridgeport

Available units: 557 SF - 4,867 SF

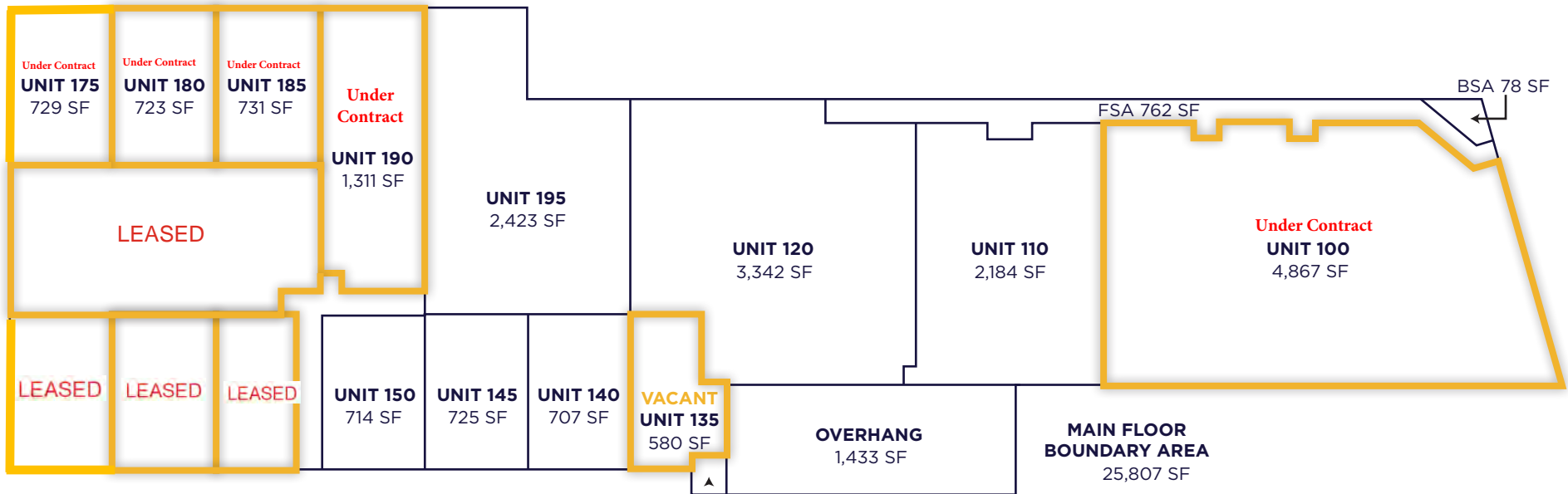
Base Rent: \$18.00/SF

Additional Rent: \$5.33/SF



The property is situated on Mitchell road, the main thoroughfare on Mitchell Island. This multi-tenant facility is currently occupied by a range of tenants including woodworking, fabrication and auto repair. Units sizes range from 557 SF to 4,867 SF. Each unit has its own grade loading garage door and single washroom. All units are vacant and ready for immediate occupancy. Small yard allocation for vehicle parking spaces and storage is available depending on the unit sizes. Please reach out to agent for leasing information. Average additional rent is \$5.33/SF.

MAIN FLOOR



1 Unit Remaining
Unit 135 with
Dock Loading



FLOOR
PLAN

11951 Mitchell Road, Richmond, BC

AVAILABLE UNITS

FOR LEASE: INDIVIDUAL SMALL BAY GRADE LOADING INDUSTRIAL UNITS
557 SF - 4,867 SF

Unit #	NRA (SF)	Loading
135	586	1 Dock







UNIT 100

Features

- 4,867 square feet of net rentable area
- Autobody repair equipment available
- 2 grade loading doors
- 2 bathrooms
- High traffic location with signage opportunities
- Exterior dock loading near loading door
- Available immediately



CONTACT INFORMATION

MAX WILTSHIRE

Associate Vice President

Personal Real Estate Corporation

+1 604 640 5810

max.wiltshire@cushwake.com

DEREK NYSTROM

Vice President

Personal Real Estate Corporation

+1 604 644 8652

derek.nystrom@macdonaldcommercial.com

700 West Georgia Street, Suite 1200
Toronto Dominion Tower, Pacific Centre
Vancouver, British Columbia V7Y 1A1+ 1
604 683 3111

cushmanwakefield.com

