

FOR LEASE

Madison Park Medical Office

3445 PACIFIC COAST HWY, TORRANCE



NEWMARK

ERIC LASTITION

Executive Managing Director

t 310-491-2047

eric.lastition@nmrk.com

CA RE Lic. #01119647

GEOFF LUDWIG

Executive Managing Director

t 310-491-2077

geoff.ludwig@nmrk.com

CA RE Lic. #01232244

MADISON PARK MEDICAL - TORRANCE



Strategic South Bay location serving South Torrance, Redondo Beach, Lomita, and the Palos Verdes Peninsula



Ample on-site perimeter surface parking to support patient and staff needs in a 4.5/1,000 parking ratio



Patient-friendly professional medical building with many specialty practices in a high-demand healthcare area



Minutes to major hospitals, including Providence Little Company of Mary and Torrance Memorial Medical Center



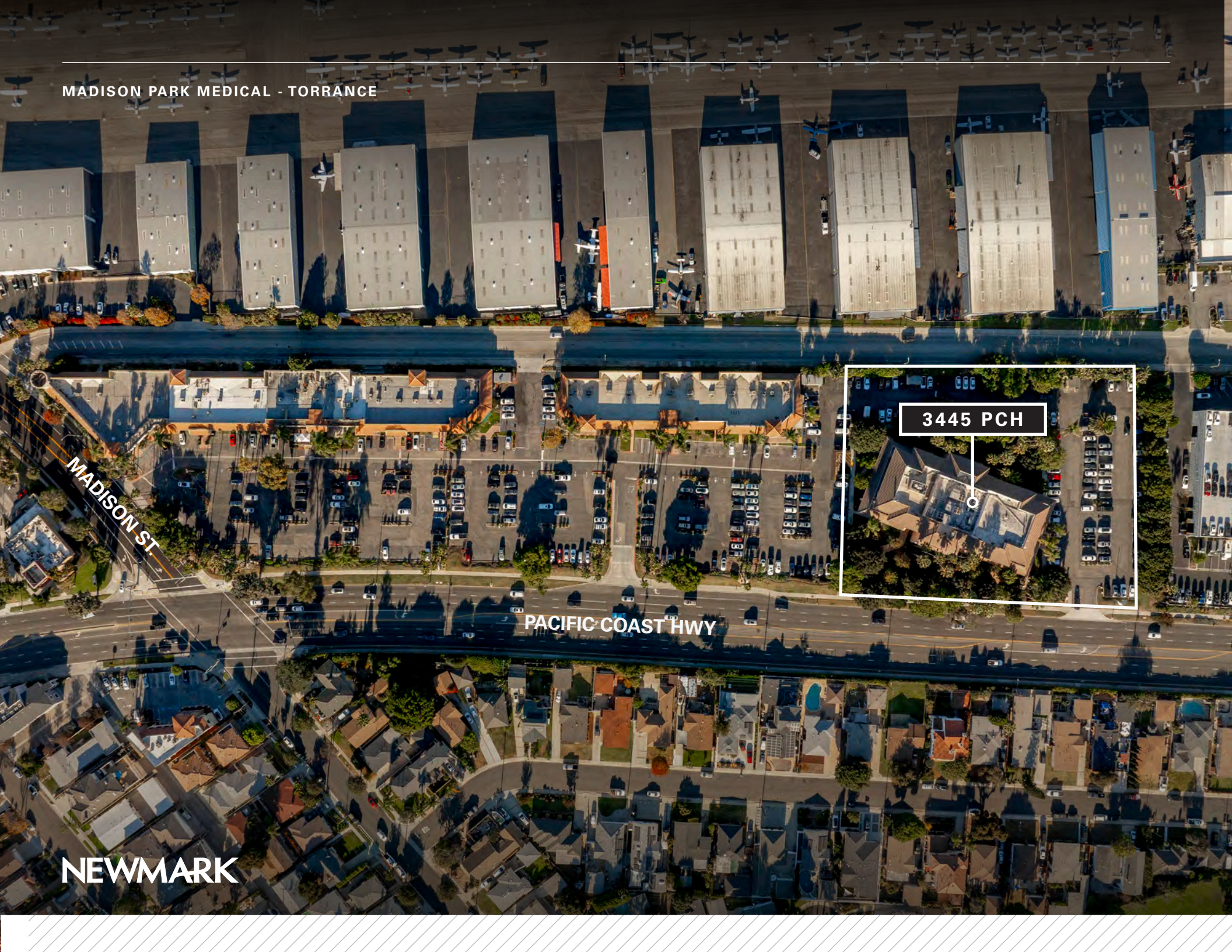
Prime monument signage opportunity on Pacific Coast Highway with strong daily traffic and brand exposure



Well-maintained neighborhood center with a curated mix of retail amenities, medical providers, and dining options



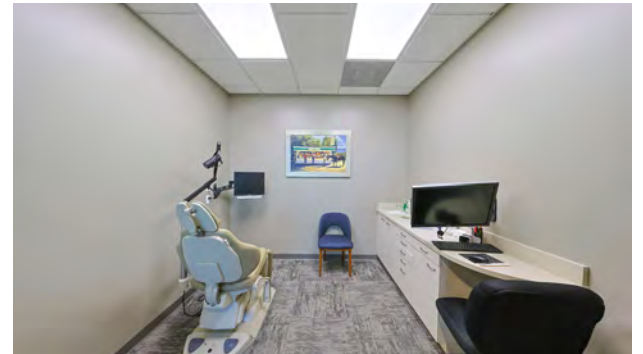
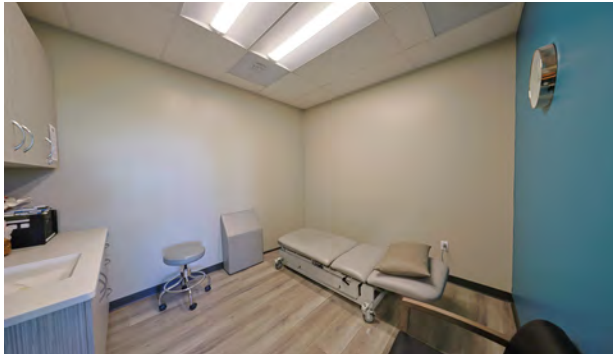
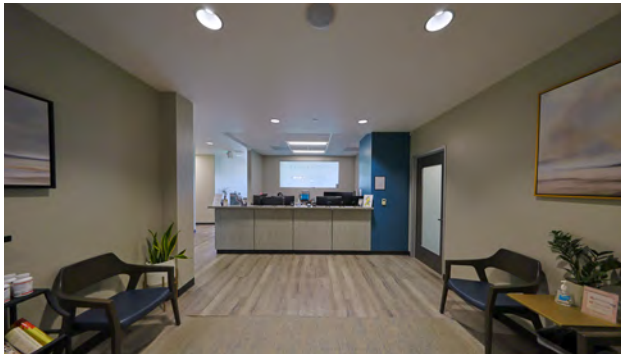
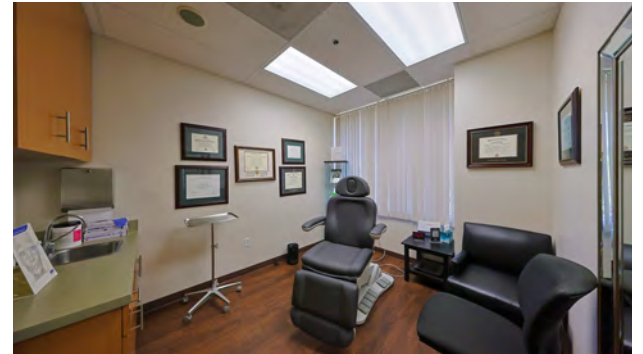
MADISON PARK MEDICAL - TORRANCE



3445 PCH

NEWMARK

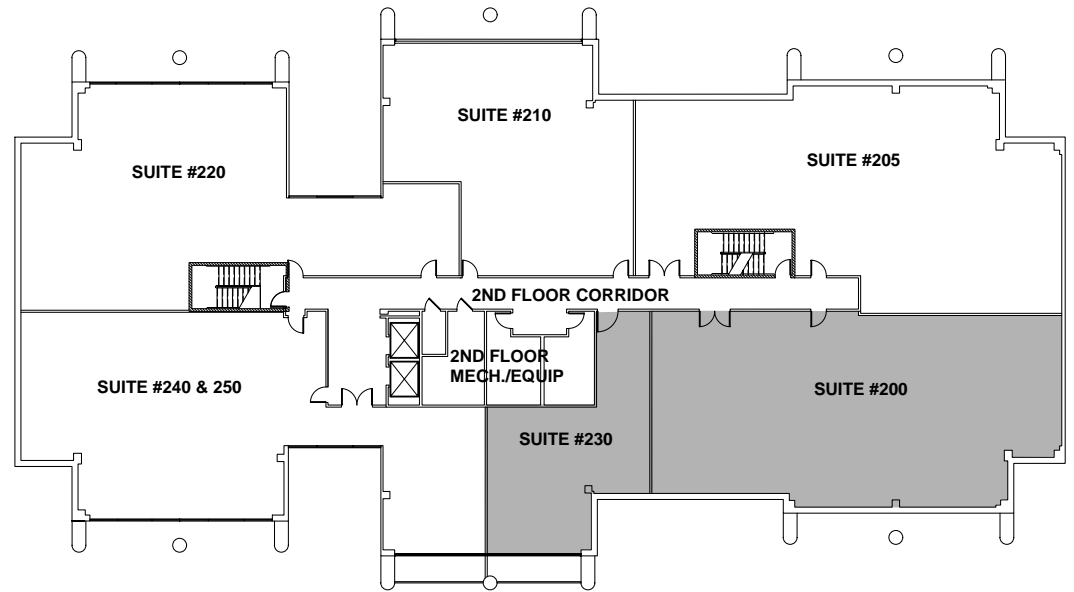
Interior Photos



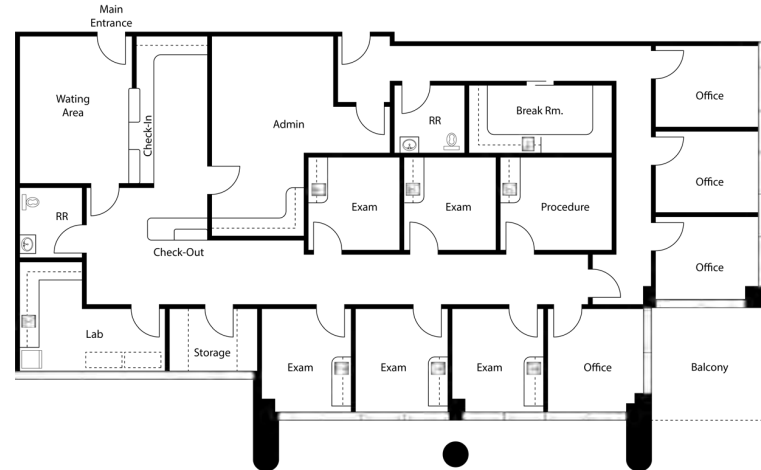
Medical Availability

2ND FLOOR

Suite	RSF	Rental Rate
200	± 3,550	\$4.45 PSF MG
230	± 1,218	\$4.45 PSF MG
	± 4,768	



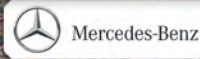
SUITE 200
HYPOTHETICAL LAYOUT
± 3,550 RSF



MADISON PARK - TORRANCE

Amenities

MADISON PARK



Mercedes-Benz



TORRANCE MEMORIAL
MEDICAL CENTER



LAND-ROVER

AutoNation Acura
South Bay

Zamperini Field



DCH
Toyota of
Torrance



Sam's
CLUB



LOWE'S
Home Improvement Warehouse



COSTCO
WHOLESALE



Jack
in the box



STAPLES



PETSMART



ISLANDS
fine burgers & drinks



BIG 5
SPORTING GOODS



Smart & Final



THE HOME
DEPOT



VONS

MENDOCINO FARMS
sandwich market



KOHL'S



HomeGoods



WINGSTOP



L&L
Hawaiian
Barbecue



Peet's Coffee



Mimi's
Cafe



4A
JAPANESE BBQ
Gyu-Kaku



Jamba

CRENSHAW BLVD

CRENSHAW BLVD



BLAZE
FOOD & DRINK
PIZZA



california
PIZZA KITCHEN



SOUTH BAY
LEXUS



IN-N-OUT
BURGER



GEN
KOREAN BBQ HOUSE



TRADER
JOE'S



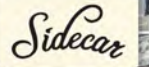
STONE FIRE
GRILL



McDonald's



Chick-fil-C



Sidecar



AMC



Rubio's



WHOLE
FOODS
MARKET

AMSTER ST

LOMITA BLVD

LOMITA BLVD

SKYPARK DR

Location Map



FOR MORE INFORMATION:



ERIC LASTITION
Executive Managing Director
t 310-491-2047
eric.lastition@nmrk.com
CA RE Lic. #01119647

GEOFF LUDWIG
Executive Managing Director
t 310-491-2077
geoff.ludwig@nmrk.com
CA RE Lic. #01232244

CORPORATE LICENSE #01355491

The information contained herein has been obtained from sources deemed reliable but has not been verified and no guarantee, warranty or representation, either express or implied, is made with respect to such information. Terms of sale or lease and availability are subject to change or withdrawal without notice.