

# PRINCETON GROUND FLOOR FOR LEASE

211-213 NASSAU STREET, PRINCETON NJ



# PRINCETON GROUND FLOOR FOR LEASE

211-213 NASSAU STREET, PRINCETON NJ



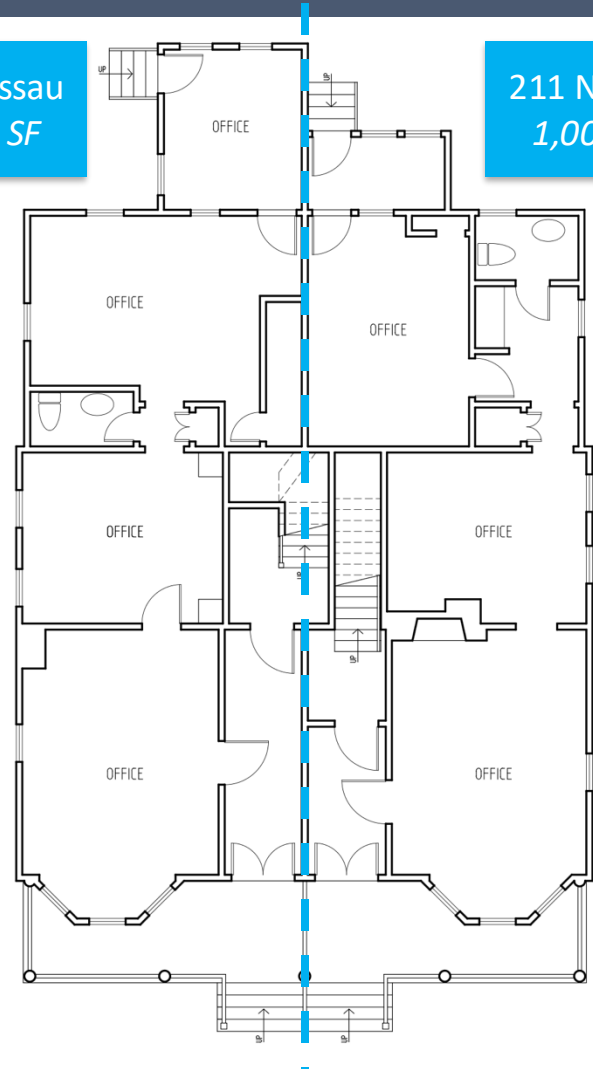
211-213 Nassau Street is a prestigious retail/office/medical building located in the center of downtown Princeton. The entire ground floor is now available for lease. The ground floor totals 2,100 SF comprised of 211 Nassau (1,000 SF) and 213 Nassau (1,100 SF). 211 and 213 Nassau each come with signage, and they may be rented separately or combined to create a high-profile flagship location.

# PRINCETON GROUND FLOOR FOR LEASE

211-213 NASSAU STREET, PRINCETON NJ

213 Nassau  
1,100 SF

211 Nassau  
1,000 SF



Parking Available at  
Building Rear



# PRINCETON GROUND FLOOR FOR LEASE

211-213 NASSAU STREET, PRINCETON NJ

211 Nassau  
1,000 SF



# PRINCETON GROUND FLOOR FOR LEASE

211-213 NASSAU STREET, PRINCETON NJ

213 Nassau  
1,100 SF



# PRINCETON GROUND FLOOR FOR LEASE

211-213 NASSAU STREET, PRINCETON NJ



# PRINCETON GROUND FLOOR FOR LEASE

211-213 NASSAU STREET, PRINCETON NJ

CONTACT

TRACY BRANNIGAN

(609) 377-7839

