



New Full Floor Sublease

575 MARKET STREET

SUITE 2300: 11,887 RSF

FOR MORE INFORMATION PLEASE CONTACT:

STEVE CLARK

650 480 2209

steve.clark@am.jll.com

RE Lic #: 01507167

HILLARY HOGAN

hillary.hogan@am.jll.com

415 395 4937

RE License # 01981016

CARLYE PARKER

carlye.parker@am.jll.com

415 228 3130

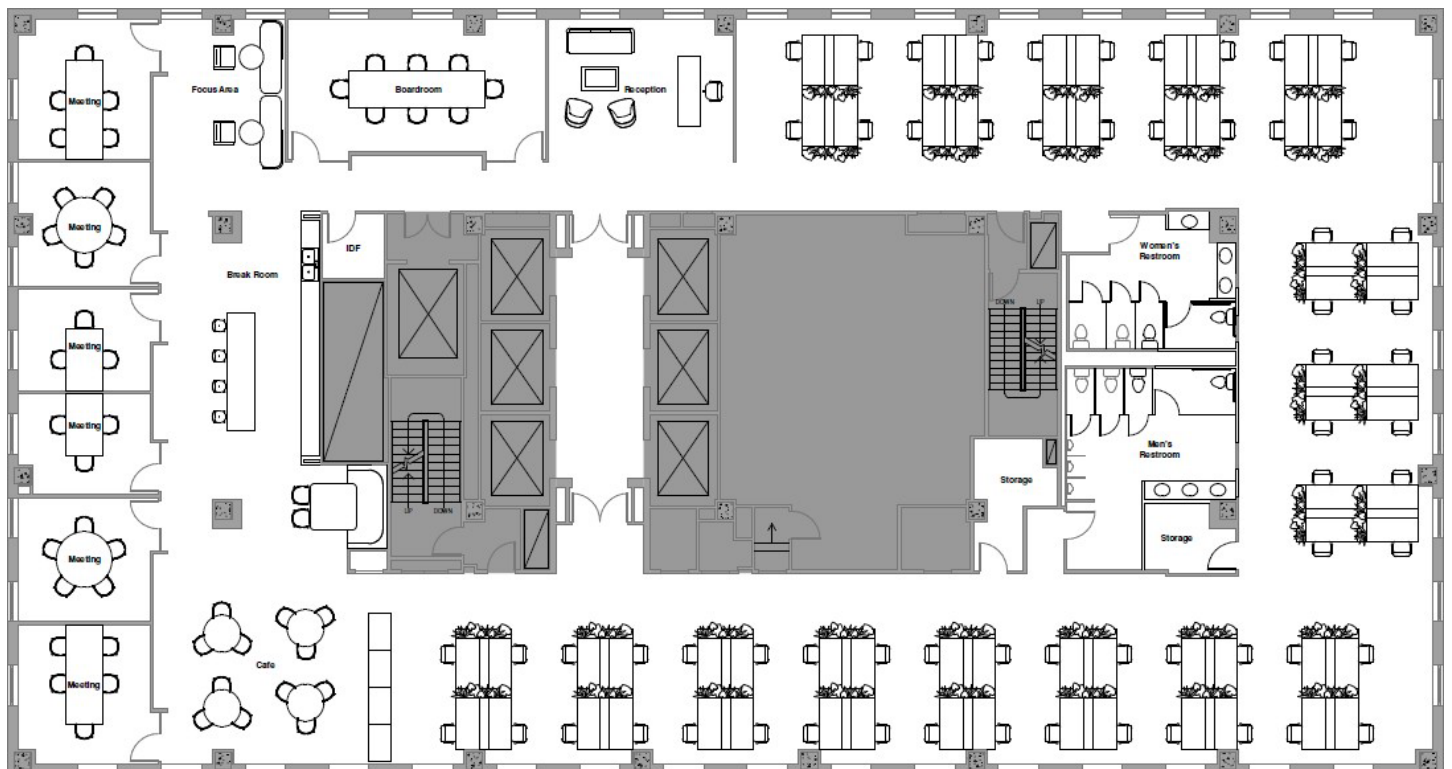
RE License # 02089807



575 MARKET STREET

RSF	Suite 2300: 11,887 RSF
TERM	Through September 30, 2028
RATE	Please Inquire
AVAILABILITY	Q1 2021

- Directly in front of Montgomery Street BART station
- Brand new fitness center with showers and bike parking
- Full floor identity with four sides of window-line
- Construction to be complete Q4 2020
- New, expanded restroom core



FOR MORE INFORMATION PLEASE CONTACT:

STEVE CLARK

650 480 2209
steve.clark@am.jll.com
RE Lic #: 01507167

HILLARY HOGAN

hillary.hogan@am.jll.com
415 395 4937
RE License # 01981016

CARLYE PARKER

carlye.parker@am.jll.com
415 228 3130
RE License # 02089807





HILLARY HOGAN

626 390 0658

hillary.hogan@am.jll.com

RE Lic #: 01981016

STEVE CLARK

650 480 2209

steve.clark@am.jll.com

RE Lic #: 01507167

CARLYE PARKER

415 228 3130

carlye.parker@am.jll.com

RE Lic #: 02089807





Open office space



Restroom

HILLARY HOGAN

626 390 0658

hillary.hogan@am.jll.com

RE Lic #: 01981016

STEVE CLARK

650 480 2209

steve.clark@am.jll.com

RE Lic #: 01507167

CARLYE PARKER

415 228 3130

carlye.parker@am.jll.com

RE Lic #: 02089807

