



COMMERCIAL
ASSET GROUP

בסייד

Adam Funk
Managing Director
310.666.0124
afunk@cagre.com
Lic. 02129715



5478 Wilshire Blvd

Los Angeles, CA 90036

OFFICE SPACES FOR LEASE

PROPERTY HIGHLIGHTS

SPACE SIZE

Suite 400: $\pm 1,012$ RSF

Suite 430: $\pm 1,214$ RSF

(CONTIGUOUS FOR $\pm 2,226$ RSF)

RENTAL RATE

Negotiable, FSG

TERM

3 - 5 Years

PARKING

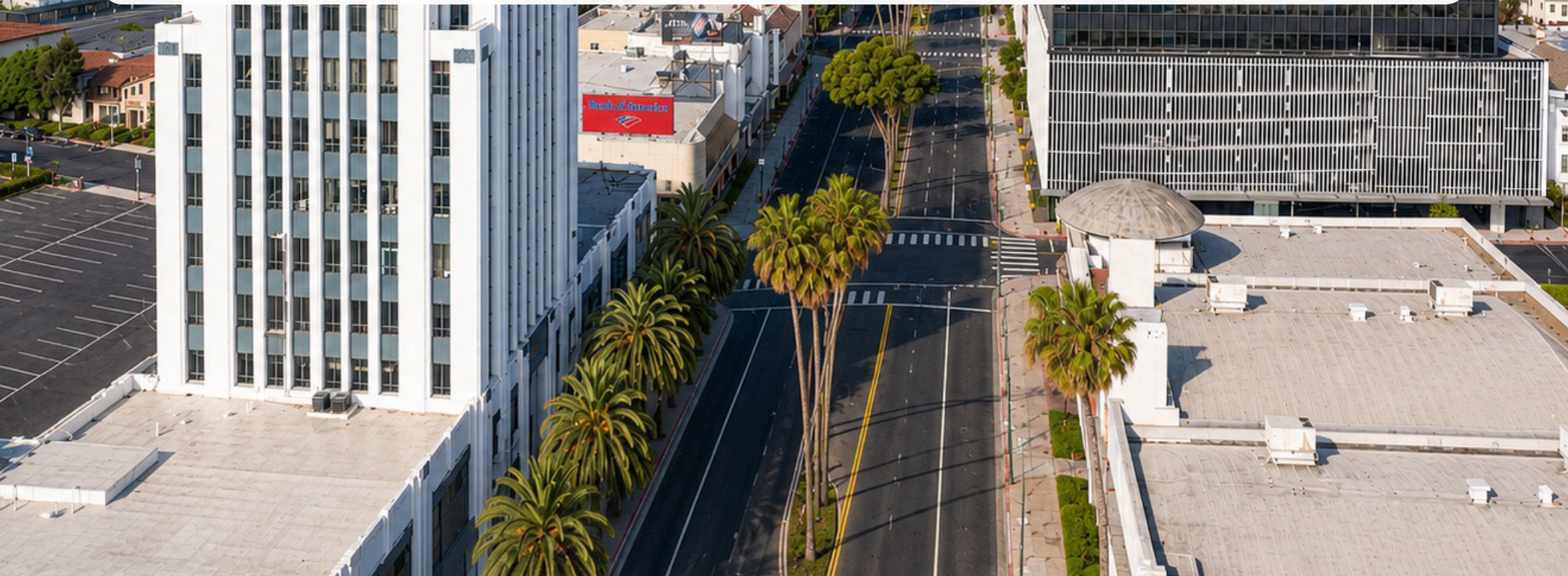
Approx 30 Spaces

First Come First Serve at no Charge

Monthly Available Next Door

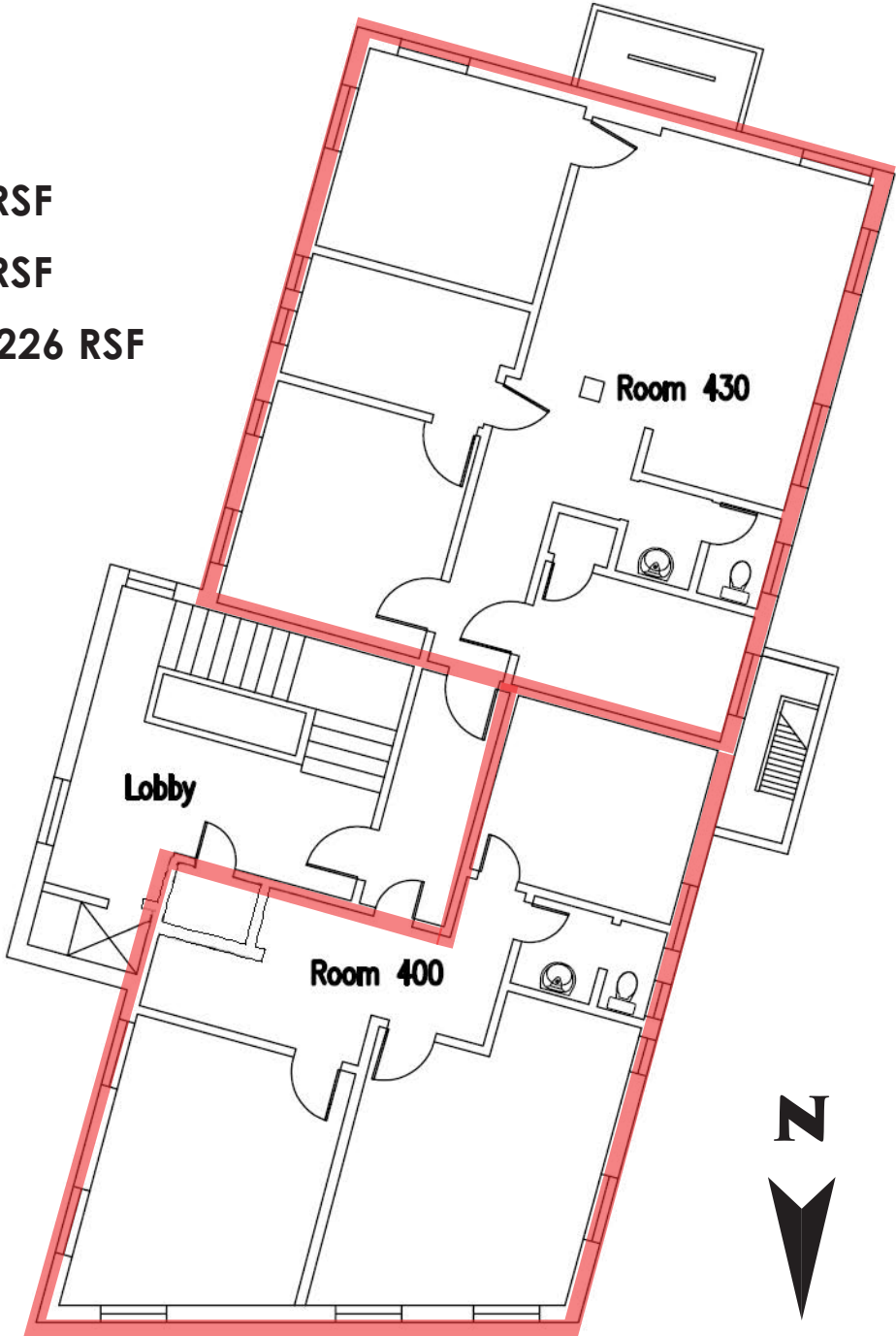
RESTROOMS IN SUITE

This property consists of a 4-story section at the corner of Wilshire Blvd and Dunsmuir Ave with ground floor retail and 3 stories of office space; a 2-story section with frontage on Wilshire Blvd with ground floor retail and a second story of office space; and a section at the rear of the property of single story retail.

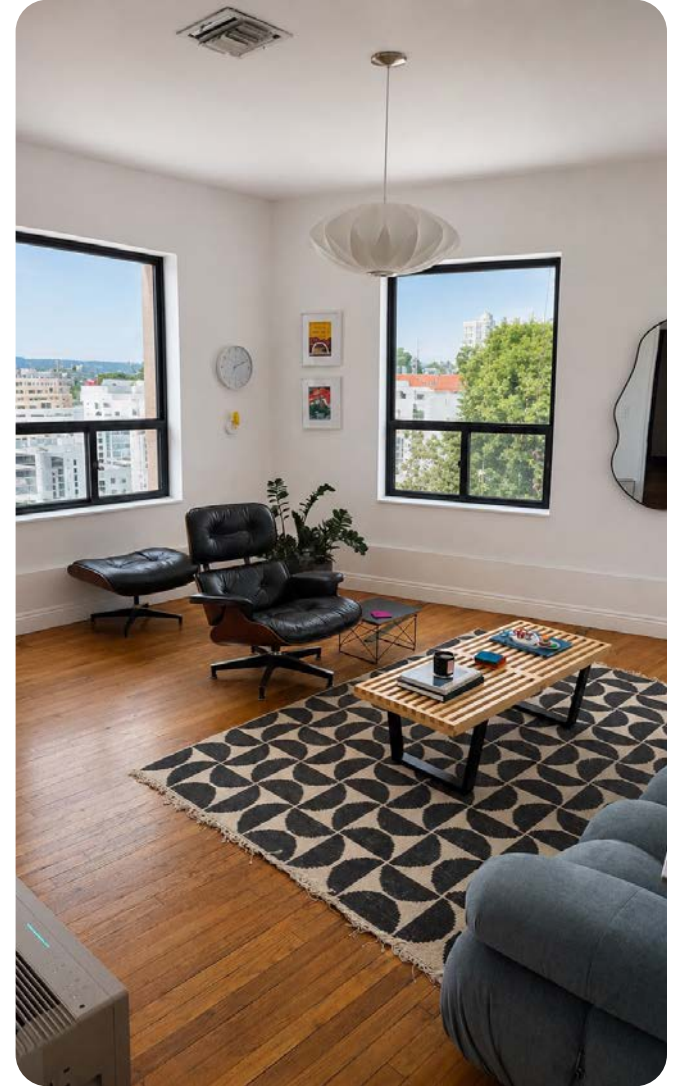


SUITE 400 & 430 FLOOR PLAN (CAN BE CONTIGUOUS)

Suite 400: ±1,012 RSF
Suite 430: ±1,214 RSF
CONTIGUOUS FOR ±2,226 RSF



SUITE 400 PHOTOS



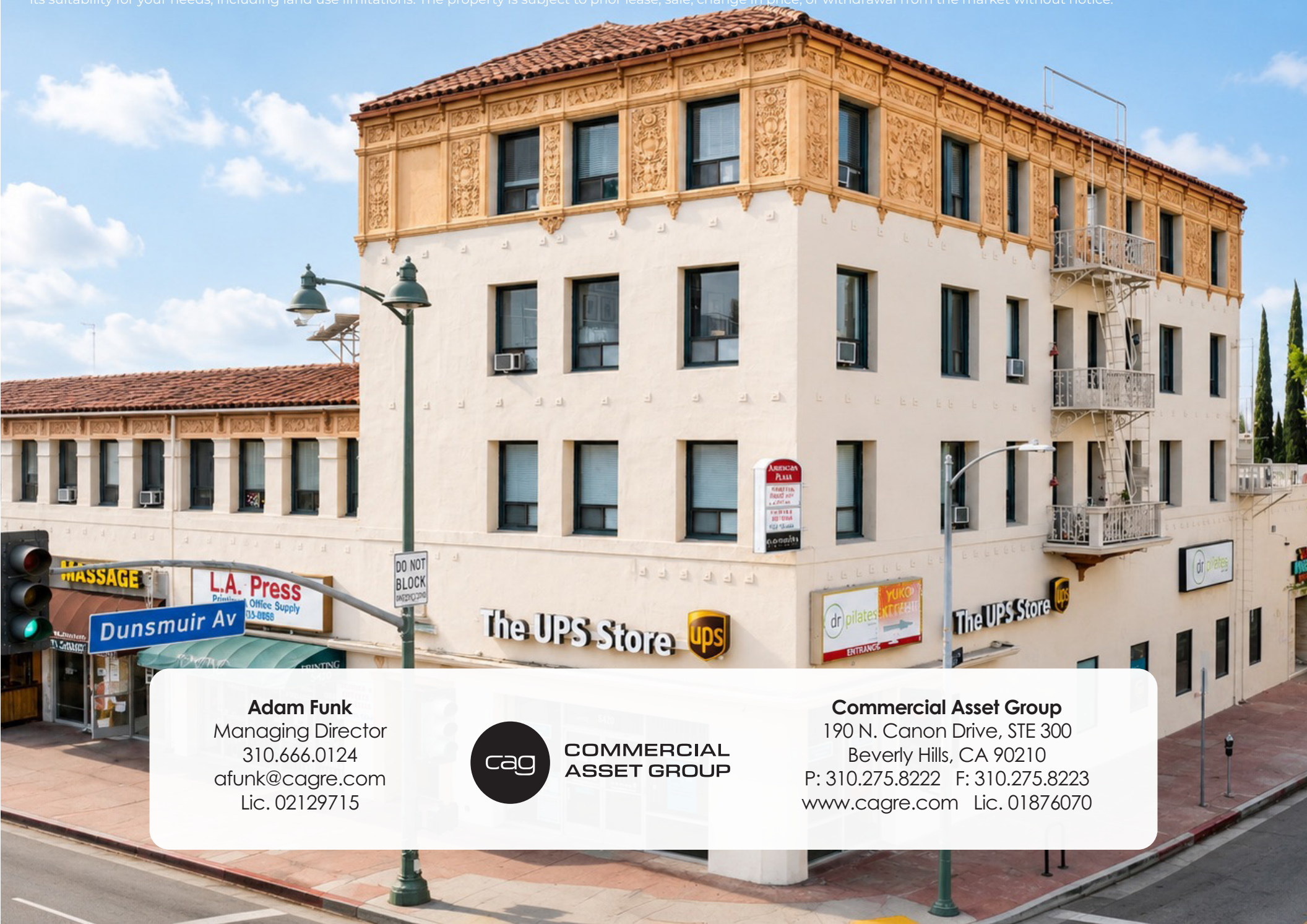
SUITE 430 PHOTOS



AERIAL



These materials are based on information and content provided by others, which we believe are accurate. No guarantee, warranty or representation is made by Commercial Asset Group, Inc. or its personnel. All interested parties must independently verify accuracy and completeness. As well, any projections, assumptions, opinion, or estimates are used for example only and do not represent the current or future performance of the identified property. Your tax, financial, legal and toxic substance advisors should conduct a careful investigation of the property and its suitability for your needs, including land use limitations. The property is subject to prior lease, sale, change in price, or withdrawal from the market without notice.



Adam Funk
Managing Director
310.666.0124
afunk@cagre.com
Lic. 02129715



**COMMERCIAL
ASSET GROUP**

Commercial Asset Group
190 N. Canon Drive, STE 300
Beverly Hills, CA 90210
P: 310.275.8222 F: 310.275.8223
www.cagre.com Lic. 01876070