

FOR  
LEASE

1431 W Knox St  
TORRANCE, CA 90501

# Shops

AT SOUTH BAY



**JOIN THE U.S. COAST GUARD**



**DAN BACANI**  
Founding Principal  
626.242.7790

dbacani@lee-associates.com  
License ID 01385413

**GREGORY KHO**  
Senior Associate  
213.400.0654

gregory.kho@lee-associates.com  
License ID 02033257

# 01 EXECUTIVE SUMMARY

## PROPERTY DETAILS:

Asking Rate:	\$2.50 PSF
CAM:	\$1.15 PSF
Terms:	3-10 years
Total Building SF:	±51,219 SF
Lot Size:	±217,600 SF
Zoning:	C2-1
Year Built:	2005
APN:	7351-002-029
Parking Ratio:	5.08/1,000

## PROPERTY HIGHLIGHTS:

- **Prime Retail Location:** Situated within the Shops at South Bay, this property offers high visibility with over **30,000 vehicles** passing per day and steady foot traffic.
- **Adjacent to Major Retailers:** Walmart Center, 99 Ranch Market and Dollar Tree, benefiting from the draw of these popular stores.
- **Versatile Space Availability:** Customizable retail and restaurant spaces ranging from **1,250 to 8,395** square feet.
- **Modern Construction:** Built in 2005, the center boasts incredible **signage opportunity** and **expansive storefront windows**.



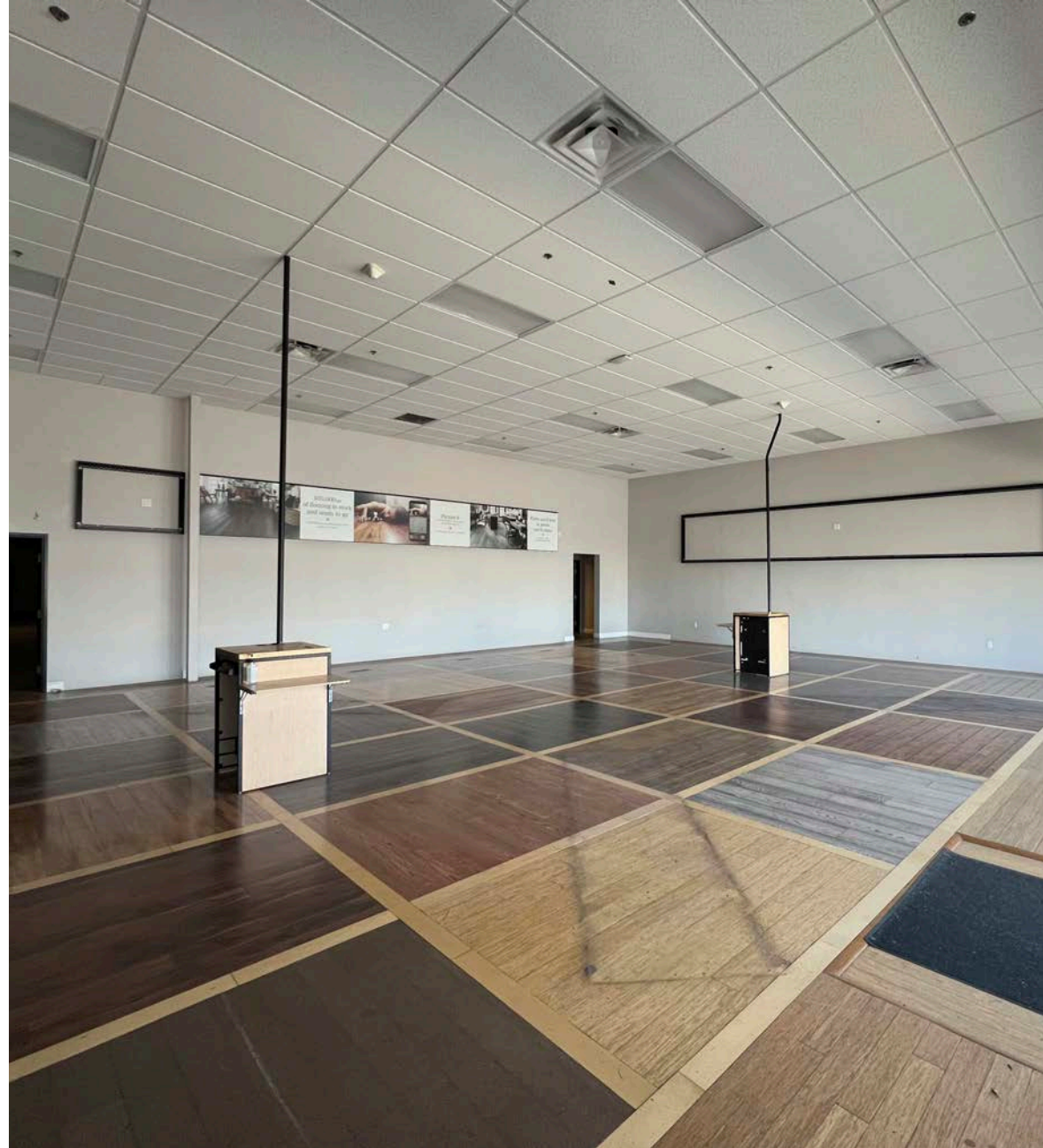
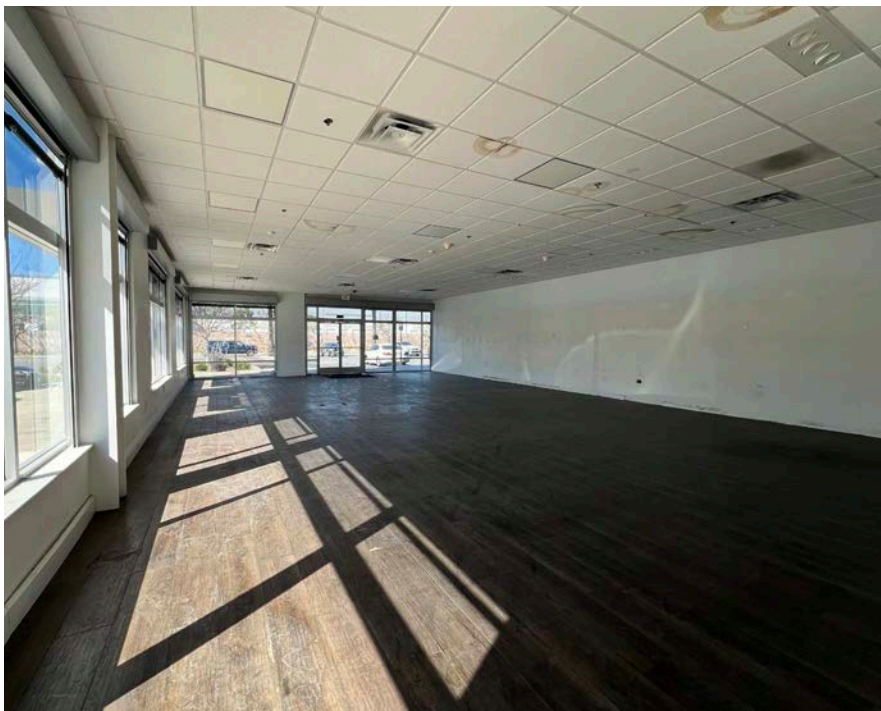
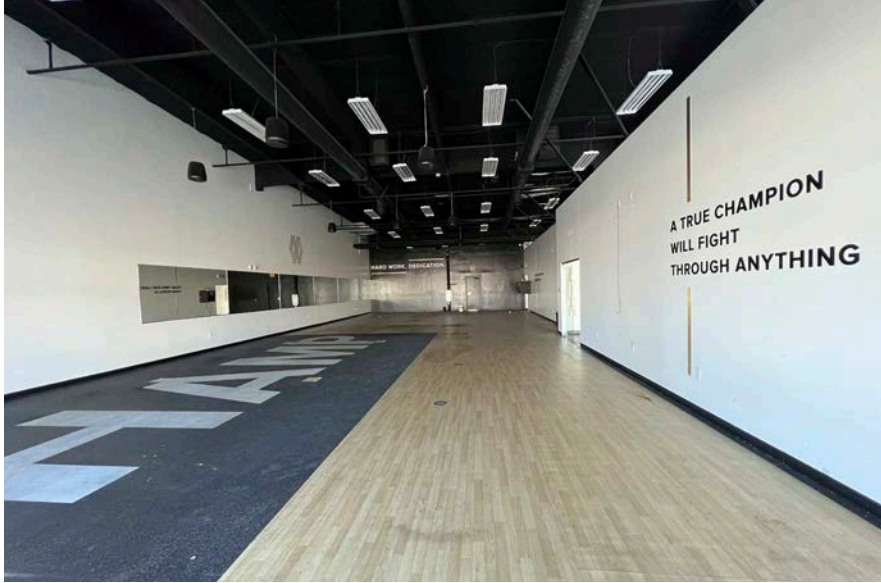
# 02 PROPERTY PHOTOS



# 02 PROPERTY PHOTOS



# 02 PROPERTY PHOTOS



# 03 SIGNAGE OPPORTUNITIES



The information contained herein is obtained from sources believed to be reliable. However, we have not verified it and make no guarantees, warranties or representations as to the completeness or accuracy thereof. The presentation of this property is used for example and is submitted subject to errors, omissions, change of price or conditions, and is subject to prior sale, lease or withdrawal without notice. [www.lee-associates.com](http://www.lee-associates.com)

# 03 SIGNAGE OPPORTUNITIES



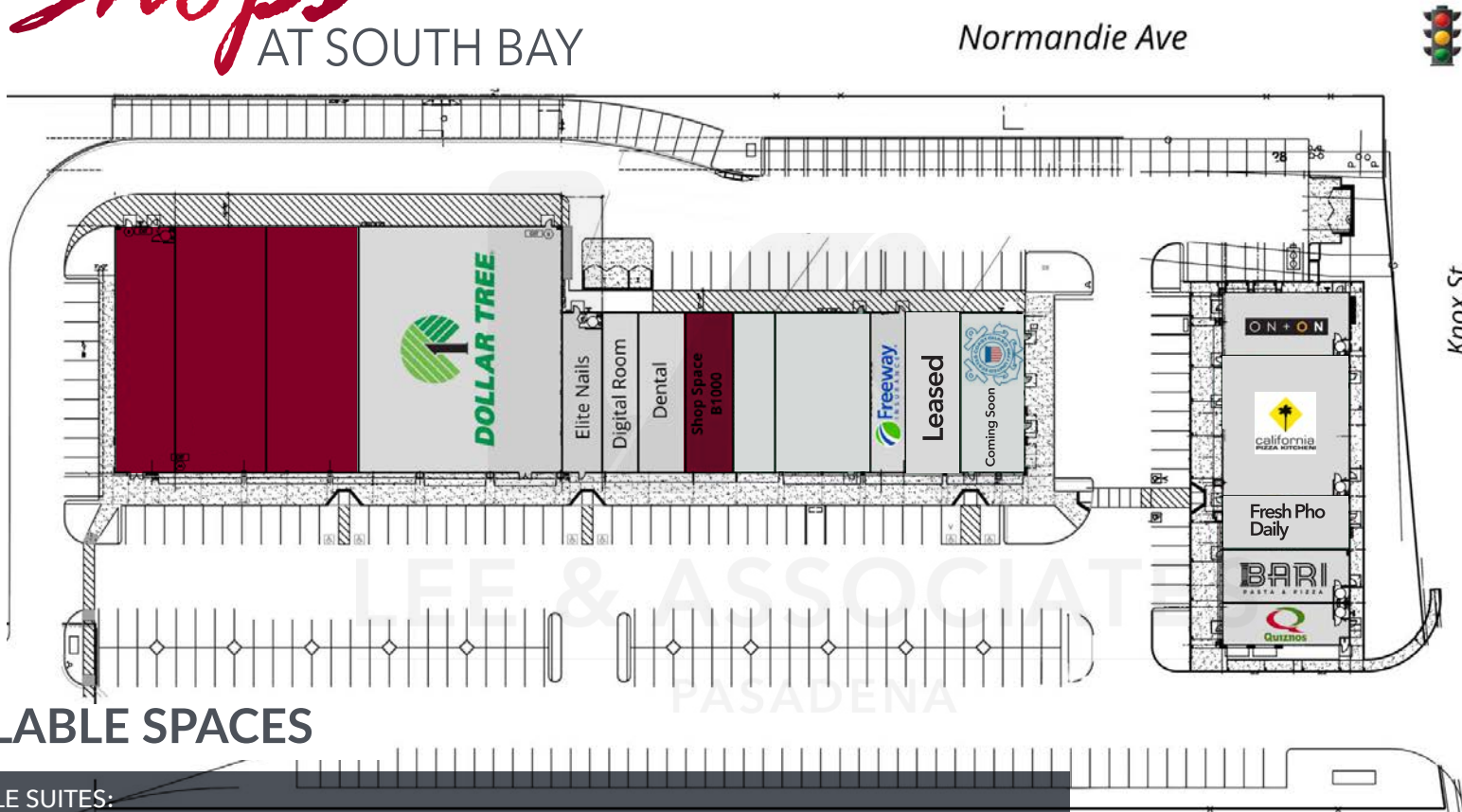
# 04 SITE PLAN | OVERVIEW

# Shops AT SOUTH BAY



# 04 SITE PLAN

# Shops AT SOUTH BAY



## AVAILABLE SPACES

### AVAILABLE SUITES:

SUITE	STATUS	SIZE (±SF)	LEASE RATE	LEASE TYPE	DESCRIPTION
Suite B100	AVAILABLE	3,220 - 13,570	\$2.50 SF/mth	Est. \$1.15 NNN	Retail/Office Space
Suite B 200	AVAILABLE	5,175 - 13,570	\$2.50 SF/mth	Est. \$1.15 NNN	Retail/Office Space
Suite B 300	Call Listing Broker	5,175 - 13,570	\$2.50 SF/mth	Est. \$1.15 NNN	Retail/Office Space
Suite B 1000	AVAILABLE	1,500	\$2.50 SF/mth	Est. \$1.15 NNN	Retail/Office Space
<del>Suite B 1100</del>	<del>AVAILABLE</del>	<del>1,250 - 4,250</del>	<del>\$2.25 SF/mth</del>	<del>Est. \$1.15 NNN</del>	<del>Former Staffing Agency</del>
<del>Suite B1200</del>	<del>AVAILABLE</del>	<del>3,500 - 4,250</del>	<del>\$2.25 SF/mth</del>	<del>Est. \$1.15 NNN</del>	<del>Former Fitness Gym</del>
<del>Suite D1400</del>	<del>AVAILABLE</del>	<del>1,000</del>	<del>\$2.25 SF/mth</del>	<del>Est. \$1.15 NNN</del>	<del>Former Hair and Beauty Salon</del>
<del>Suite D1500</del>	<del>AVAILABLE</del>	<del>2,500 - 4,300</del>	<del>\$2.25 SF/mth</del>	<del>Est. \$1.15 NNN</del>	<del>Former Cell Phone Sales</del>

VACANCY LEGEND:



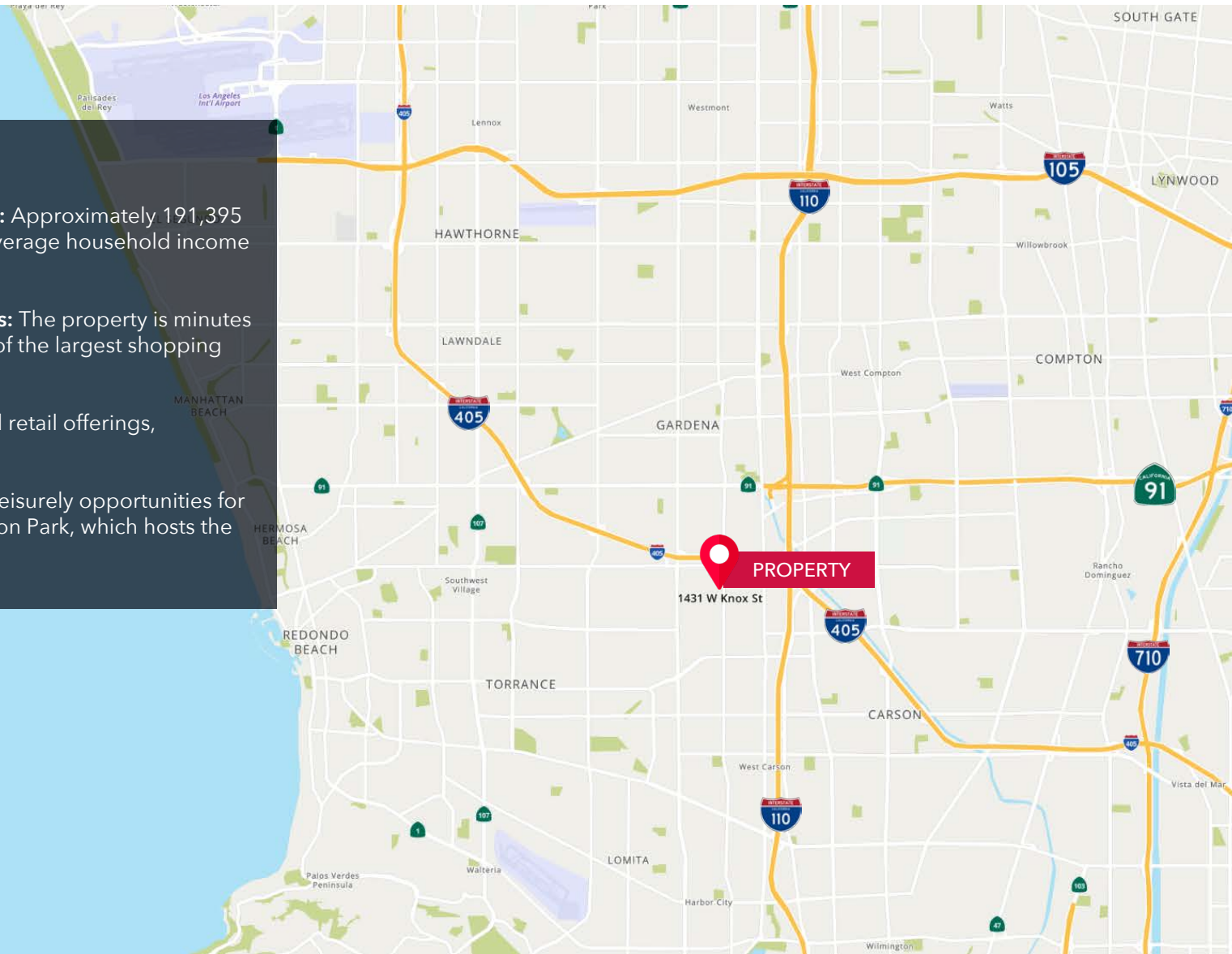
## LOCATION HIGHLIGHTS:

**Strong Demographics and Income Levels:** Approximately 191,395 residents within a 3-mile radius, with an average household income of \$98,787.

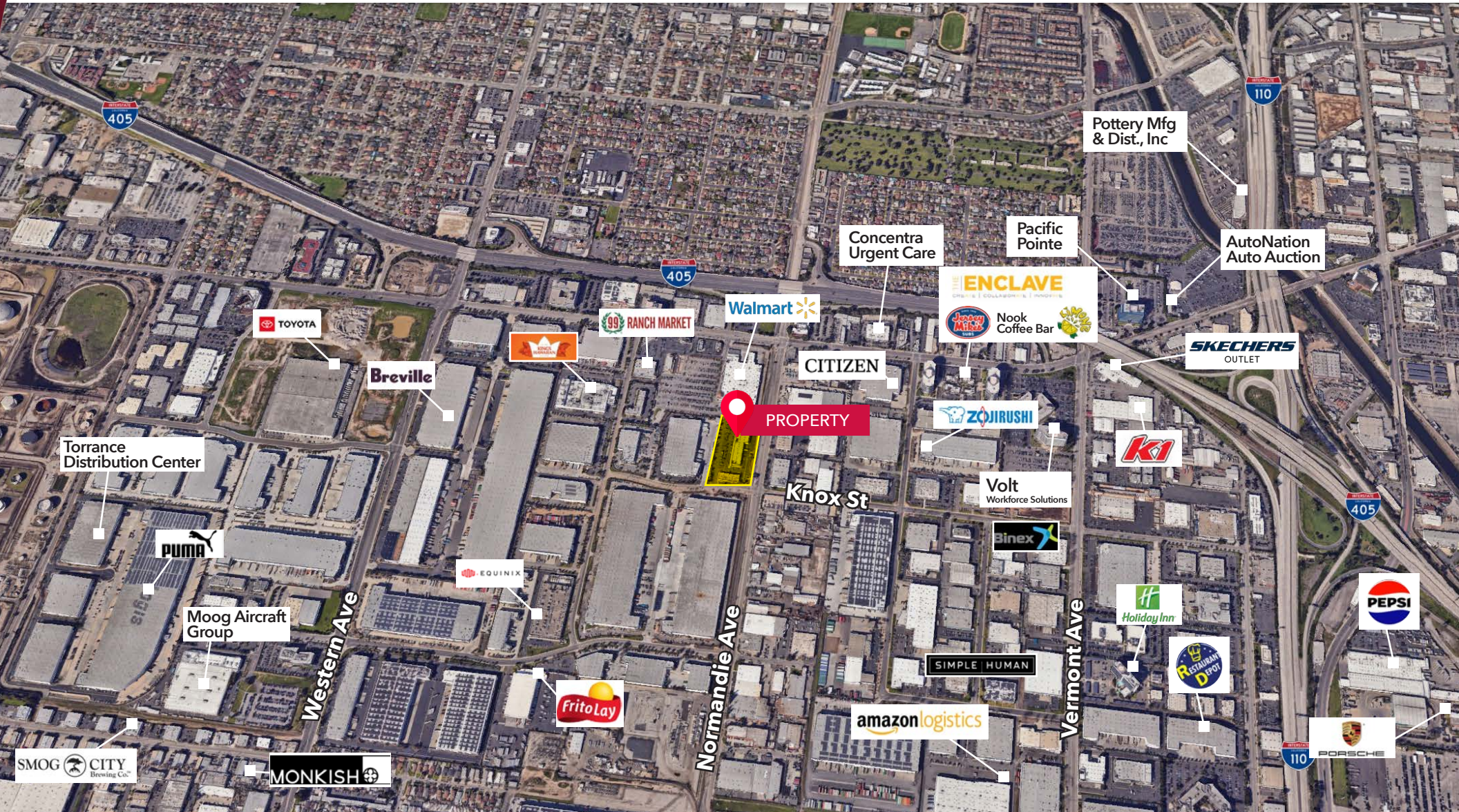
**Proximity to Major Shopping Destinations:** The property is minutes away from Del Amo Fashion Center, one of the largest shopping malls in the United States.

**Diverse Retail Mix** - Variety of tenants and retail offerings, providing a diverse shopping experience.

**Abundant Recreational Facilities** - Great leisurely opportunities for residents enjoy, including Charles H. Wilson Park, which hosts the popular Torrance Farmers Market.

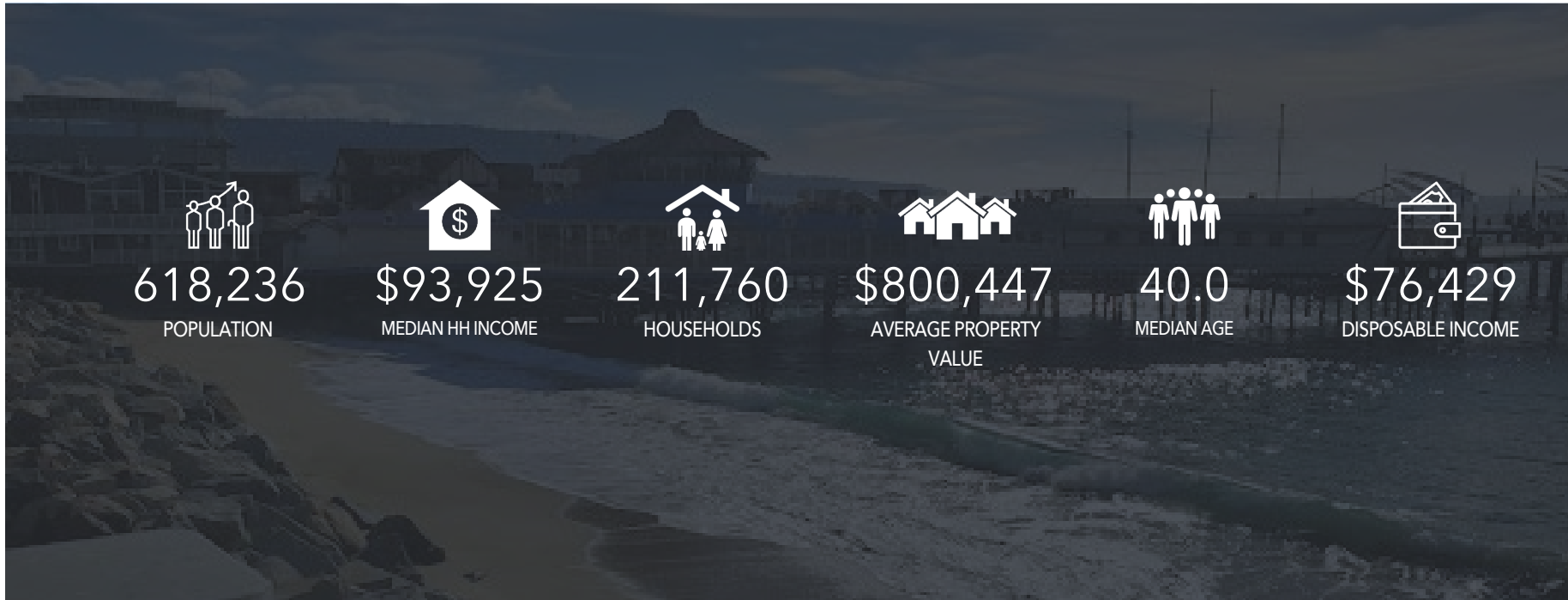


# 05 AMENITIES MAP



# TORRANCE OVERVIEW

	1 Mile	3 Mile	5 Mile
Population	12,430	203,825	618,236
Median Age	38.8	42.1	40.0



FOR  
LEASE

1431 W Knox St  
TORRANCE, CA 90501

**DAN BACANI**

Founding Principal

626.242.7790

[dbacani@lee-associates.com](mailto:dbacani@lee-associates.com)

License ID 01385413

**GREGORY KHO**

Senior Associate

213.400.0654

[gregory.kho@lee-associates.com](mailto:gregory.kho@lee-associates.com)

License ID 02033257



**LEE &  
ASSOCIATES**

COMMERCIAL REAL ESTATE SERVICES  
PASADENA

Lee & Associates - Pasadena, Inc.  
1055 E. Colorado Blvd., Suite 330  
Pasadena CA 91106

[lee-pasadena.com](http://lee-pasadena.com)  
Corporate ID 02059558

