

Office Property For Lease

65 Middle Neck Rd

65 Middle Neck Rd Great Neck, NY 11021



For More Information:

Rozita Soomekh- Results Powered by Rozita

Licensed Associate Real Estate Broker
Douglas Elliman Commercial - Long Island
516.344.7185
rozita.soomekh@elliman.com

 **Douglas Elliman**
Commercial

WWW.ELLIMANCOMMERCIAL.COM

THE PROPERTY CONTAINED WITHIN THIS DOCUMENT IS BEING EXCLUSIVELY REPRESENTED BY DOUGLAS ELLIMAN REAL ESTATE COMMERCIAL DIVISION, 650 SMITHTOWN BYPASS STE. 117 SMITHTOWN, NY 11787 631 868-2405 © 2023 DOUGLAS ELLIMAN COMMERCIAL OF LI, L.L.C. ALL MATERIAL PRESENTED HEREIN IS INTENDED FOR INFORMATION PURPOSES ONLY. WHILE THIS INFORMATION IS BELIEVED TO BE CORRECT, IT IS REPRESENTED SUBJECT TO ERRORS, OMISSIONS, CHANGES OR WITHDRAWAL WITHOUT NOTICE. ALL PROPERTY INFORMATION, INCLUDING, BUT NOT LIMITED TO SQUARE FOOTAGE, ROOM COUNT, ZONING IN THE LISTING SHOULD BE VERIFIED BY YOUR OWN ATTORNEY, ARCHITECT OR ZONING EXPERT. IF YOUR PROPERTY IS CURRENTLY LISTED WITH ANOTHER REAL ESTATE BROKER, PLEASE DISREGARD THIS OFFER. IT IS NOT OUR INTENTION TO SOLICIT THE OFFERINGS OF OTHER REAL ESTATE BROKERS. WE COOPERATE WITH THEM FULLY. EQUAL HOUSING OPPORTUNITY.



Office Property For Lease

65 Middle Neck Rd Great Neck, NY 11021



Offering Summary	
Price:	\$ 9,950 Per Month (MG)
Available SF:	Approx. 2,000 SF
Zoning:	B

Property Overview

Step into over a century of character with this beautifully updated retail property nestled in the heart of Great Neck Plaza on main street. Boasting approximately 2,000 rsf of main-level commercial space plus a full basement, the layout offers versatile options for retailers, offices, or service-based businesses. A standout brand-new modern frontage infuses fresh, contemporary style while honoring the building’s historic origins—perfectly aligning with the sophisticated, pedestrian-friendly energy of the downtown district. Located just blocks from the LIRR station and surrounded by vibrant shops, eateries, and services, the site delivers exceptional foot traffic and visibility. The space was previously occupied by a famous jewelry store, Jewels By Viggi, with a built in safe that is still in place today.

For More Information:
Rozita Soomekh- Results Powered by Rozita
 Licensed Associate Real Estate Broker
 Douglas Elliman Commercial - Long Island
 516.344.7185
 rozita.soomekh@elliman.com



WWW.ELLIMANCOMMERCIAL.COM

THE PROPERTY CONTAINED WITHIN THIS DOCUMENT IS BEING EXCLUSIVELY REPRESENTED BY DOUGLAS ELLIMAN REAL ESTATE COMMERCIAL DIVISION, 550 SMITHTOWN BYPASS STE. 117 SMITHTOWN, NY 11787 631.858.2405 © 2023 DOUGLAS ELLIMAN COMMERCIAL OF LI, LLC. ALL MATERIAL PRESENTED HEREIN IS INTENDED FOR INFORMATION PURPOSES ONLY. WHILE THIS INFORMATION IS BELIEVED TO BE CORRECT, IT IS REPRESENTED SUBJECT TO ERRORS, OMISSIONS, CHANGES OR WITHDRAWAL WITHOUT NOTICE. ALL PROPERTY INFORMATION, INCLUDING, BUT NOT LIMITED TO SQUARE FOOTAGE, ROOM COUNT, ZONING IN THE LISTING SHOULD BE VERIFIED BY YOUR OWN ATTORNEY, ARCHITECT OR ZONING EXPERT. IF YOUR PROPERTY IS CURRENTLY LISTED WITH ANOTHER REAL ESTATE BROKER, PLEASE DISREGARD THIS OFFER. IT IS NOT OUR INTENTION TO SOLICIT THE OFFERINGS OF OTHER REAL ESTATE BROKERS. WE COOPERATE WITH THEM FULLY. EQUAL HOUSING OPPORTUNITY.



Office Property For Lease

65 Middle Neck Rd Great Neck, NY 11021



For More Information:

Rozita Soomekh- Results Powered by Rozita

Licensed Associate Real Estate Broker
Douglas Elliman Commercial - Long Island
516.344.7185
rozita.soomekh@elliman.com



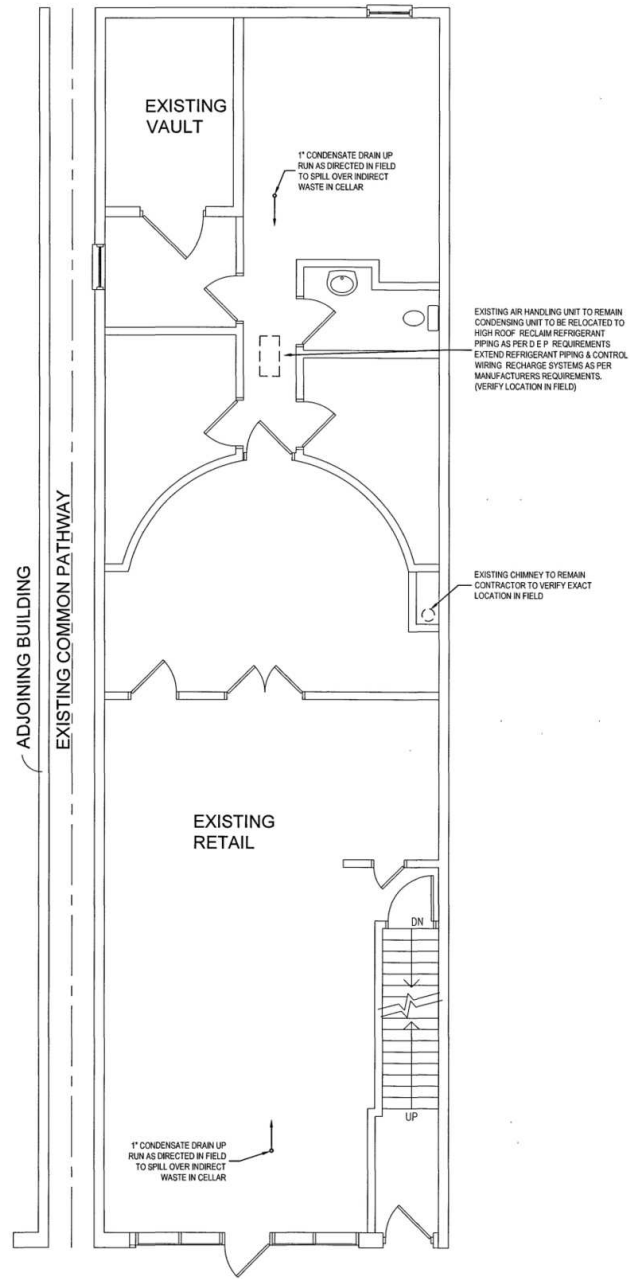
WWW.ELLIMANCOMMERCIAL.COM

THE PROPERTY CONTAINED WITHIN THIS DOCUMENT IS BEING EXCLUSIVELY REPRESENTED BY DOUGLAS ELLIMAN REAL ESTATE COMMERCIAL DIVISION, 550 SMITHTOWN BYPASS STE. 117 SMITH-TOWN, NY 11787 631.858.2405 © 2023 DOUGLAS ELLIMAN COMMERCIAL OF LI, LLC. ALL MATERIAL PRESENTED HEREIN IS INTENDED FOR INFORMATION PURPOSES ONLY. WHILE THIS INFORMATION IS BELIEVED TO BE CORRECT, IT IS REPRESENTED SUBJECT TO ERRORS, OMISSIONS, CHANGES OR WITHDRAWAL WITHOUT NOTICE. ALL PROPERTY INFORMATION, INCLUDING, BUT NOT LIMITED TO SQUARE FOOTAGE, ROOM COUNT, ZONING IN THE LISTING SHOULD BE VERIFIED BY YOUR OWN ATTORNEY, ARCHITECT OR ZONING EXPERT. IF YOUR PROPERTY IS CURRENTLY LISTED WITH ANOTHER REAL ESTATE BROKER, PLEASE DISREGARD THIS OFFER. IT IS NOT OUR INTENTION TO SOLICIT THE OFFERINGS OF OTHER REAL ESTATE BROKERS. WE COOPERATE WITH THEM FULLY. EQUAL HOUSING OPPORTUNITY.



Office Property For Lease - Floor Plan

65 Middle Neck Rd Great Neck, NY 11021



For More Information:

Rozita Soomekh- Results Powered by Rozita

Licensed Associate Real Estate Broker
Douglas Elliman Commercial - Long Island
516.344.7185
rozita.soomekh@elliman.com

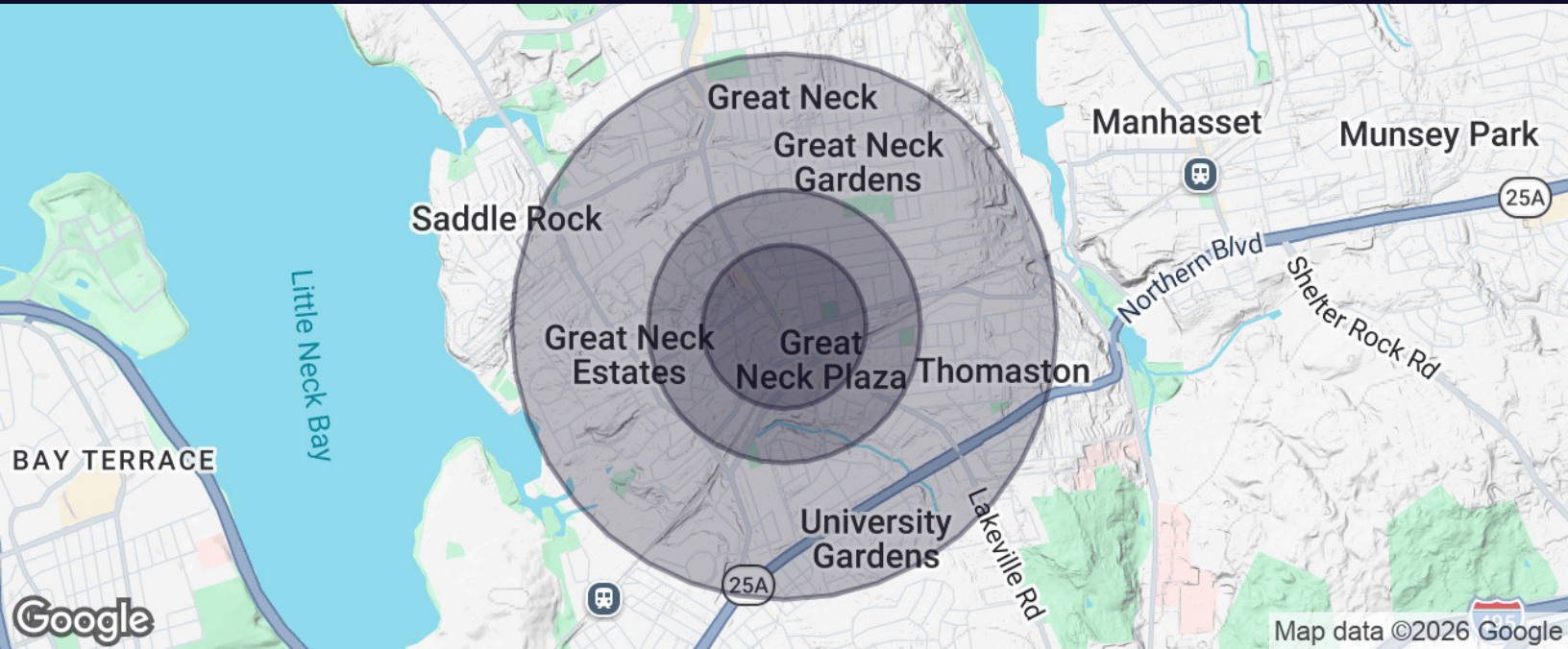


WWW.ELLIMANCOMMERCIAL.COM



Office Property For Lease

65 Middle Neck Rd Great Neck, NY 11021



Population	0.3 Miles	0.5 Miles	1 Mile
Total Population	4,196	9,542	24,919
Average Age	48	47	44
Average Age (Male)	44	44	42
Average Age (Female)	50	49	46

Households & Income	0.3 Miles	0.5 Miles	1 Mile
Total Households	1,886	4,239	9,516
# of Persons per HH	2.2	2.3	2.6
Average HH Income	\$160,916	\$169,009	\$192,553
Average House Value	\$958,164	\$976,147	\$1,134,760

For More Information:

[Rozita Soomekh- Results Powered by Rozita](#)

Licensed Associate Real Estate Broker
Douglas Elliman Commercial - Long Island
516.344.7185
rozita.soomekh@elliman.com



WWW.ELLIMANCOMMERCIAL.COM

THE PROPERTY CONTAINED WITHIN THIS DOCUMENT IS BEING EXCLUSIVELY REPRESENTED BY DOUGLAS ELLIMAN REAL ESTATE COMMERCIAL DIVISION, 550 SMITHTOWN BYPASS STE. 117 SMITHTOWN, NY 11787 631.858.2405 © 2023 DOUGLAS ELLIMAN COMMERCIAL OF LI, LLC. ALL MATERIAL PRESENTED HEREIN IS INTENDED FOR INFORMATION PURPOSES ONLY. WHILE THIS INFORMATION IS BELIEVED TO BE CORRECT, IT IS REPRESENTED SUBJECT TO ERRORS, OMISSIONS, CHANGES OR WITHDRAWAL WITHOUT NOTICE. ALL PROPERTY INFORMATION, INCLUDING, BUT NOT LIMITED TO SQUARE FOOTAGE, ROOM COUNT, ZONING IN THE LISTING SHOULD BE VERIFIED BY YOUR OWN ATTORNEY, ARCHITECT OR ZONING EXPERT. IF YOUR PROPERTY IS CURRENTLY LISTED WITH ANOTHER REAL ESTATE BROKER, PLEASE DISREGARD THIS OFFER. IT IS NOT OUR INTENTION TO SOLICIT THE OFFERINGS OF OTHER REAL ESTATE BROKERS. WE COOPERATE WITH THEM FULLY. EQUAL HOUSING OPPORTUNITY.

WE ARE COMMERCIAL REAL ESTATE

Commercial real estate involves more than just property listings. To get the most effective results, you need to partner with a company that has a full complement of services and an in-depth team of professionals to help with all of your needs. Douglas Elliman's team of commercial real estate experts is committed to unrivaled performance standards when working with tenants, investors, purchasers and owners. We represent all major property types including office, industrial, retail, apartment and land. We treat each assignment with commitment and focus, from a single transaction in a local market to national and multi-market assignments. We help negotiate contracts, coordinate construction and provide both property management as well as ongoing advisory service to satisfy your changing real estate needs. Our breadth of market knowledge, unprecedented network and use of innovative technology extend to all types of property transactions.

For More Information:

Rozita Soomekh- Results Powered by Rozita

Licensed Associate Real Estate Broker

516.344.7185

rozita.soomekh@elliman.com

Office: 631.858.2405

Fax: 631.543.0851

550 Smithtown Bypass

Smithtown, NY 11787