



OREGA

# EIGHTY STRAND

LONDON



80 Strand, London, WC2R 0RL



[WWW.OREGA.COM](http://WWW.OREGA.COM) / 0800 977 8000 / [sales@orega.com](mailto:sales@orega.com)

SPACE  
TO BE  
YOU.



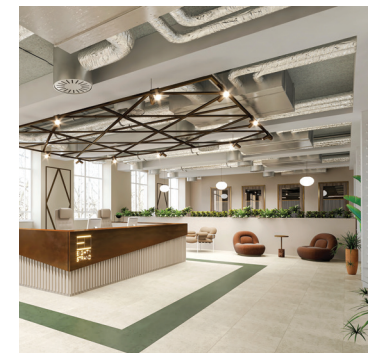
## Reach new heights

This iconic building is located in the heart of the West End, just minutes from Charing Cross and Embankment.

The interior is as impressive as the exterior, with business-class amenities throughout. You'll have access to the latest technology, meeting rooms, unlimited bean-to-cup coffee and on-site shower facilities.

That's not all: add in generously sized office spaces, a choice of workspaces and proper soundproofing, and you have the perfect solution to boost your productivity, attract the best talent and grow your business faster.

Don't settle for second best: switch to Eighty Strand and watch your reputation soar.



SPACE  
TO GROW  
YOUR  
BUSINESS.

# FEATURES



Tech-enabled meeting rooms



Climate control



Supercharged connectivity  
10GB



Shower & changing facilities



Quiet space



Phone Booths



CCTV monitoring



Hi Speed  
Wi Fi



Secure cycle storage



Collaboration spaces



Concierge service



Barista Style coffee

# SERVICES AVAILABLE

## SERVICED OFFICES

Per person  
Larger teams

from £900 p/m  
Call us on 0800 840 5509

## VIRTUAL OFFICES

Starting at £149 p/m

## MEETING ROOMS

Hourly  
Half day  
Full day

from £80  
from £108  
from £144



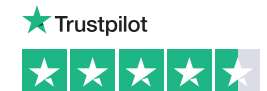
# WHAT OUR CLIENTS SAY

“By far the best serviced offices I have experienced, great facilities and the staff are excellent. There have been many occasions where they have gone the extra mile for my business and it makes such a difference. I highly recommend them.”

**CAROLINE SOUTH**  
FROM OREGA GRACECHURCH STREET

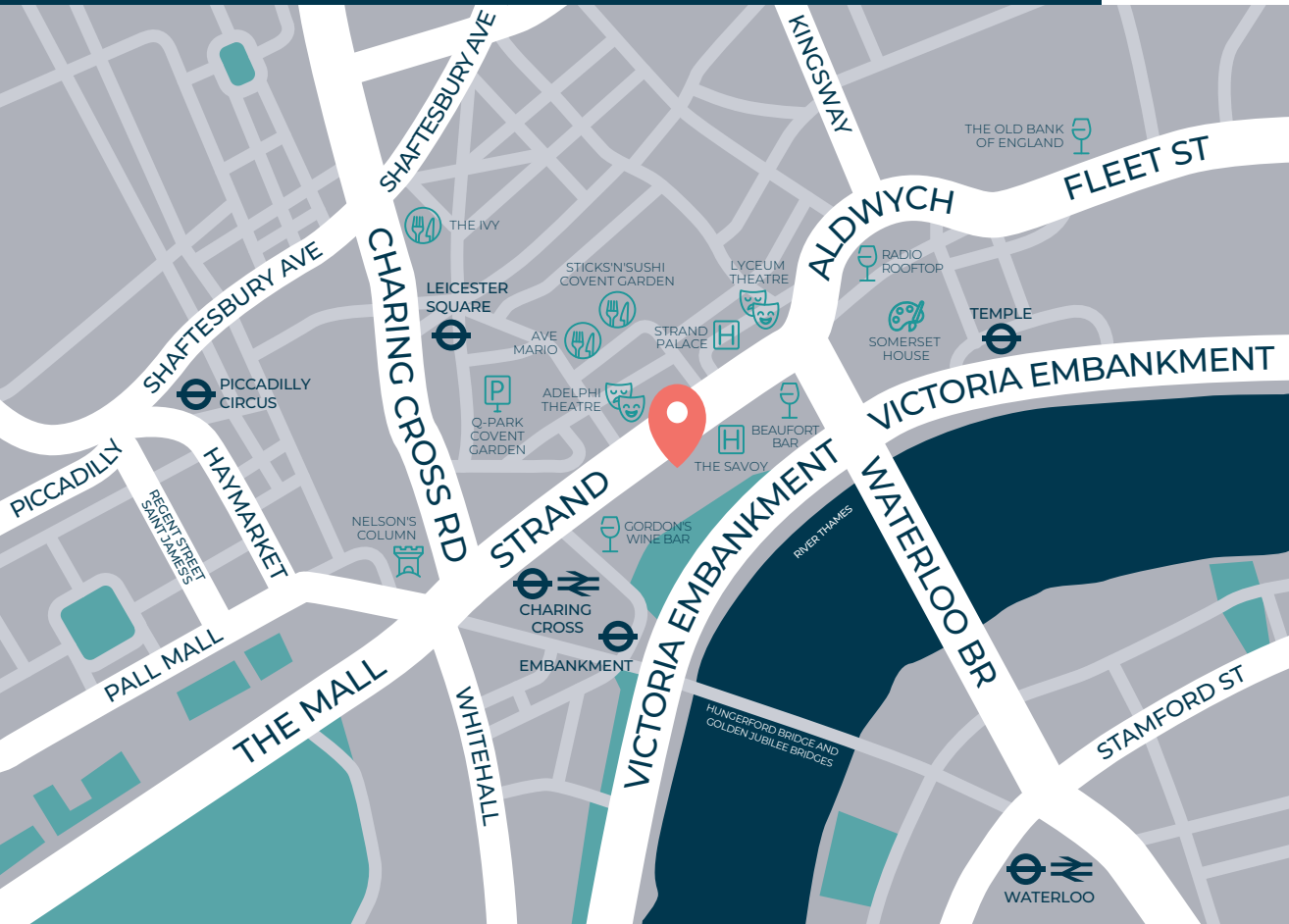


★★★★★ 4.8  
GOOGLE CUSTOMER REVIEWS



# LOCATION MAP

80 Strand, London, WC2R 0RL



# KEY STATION WALK TIMES

<b>CHARING CROSS</b> <b>04</b> min walk  	<b>COVENT GARDEN</b> <b>05</b> min walk  	<b>EMBANKMENT</b> <b>07</b> min walk  
<b>LEICESTER SQUARE</b> <b>08</b> min walk  	<b>PICCADILLY CIRCUS</b> <b>12</b> min walk  	<b>TEMPLE</b> <b>09</b> min walk   
<b>WATERLOO</b> <b>10</b> min walk    	<b>KEY TO LINES</b> BAKERLOO LINE CIRCLE LINE DISTRICT LINE JUBILEE LINE NATIONAL RAIL NORTHERN LINE PICCADILLY LINE RIVER BOAT WATERLOO & CITY LINE	

# GETTING HERE



7 minute walk from river boat



Regular bus routes nearby



2 minute walk to a Santander Cycle Bay



40 minutes from London City airport  
50 minutes from Gatwick airport and  
50 minutes from Heathrow airport



**OREGA**

## BOOK A TOUR

[WWW.OREGA.COM](http://WWW.OREGA.COM)  
0800 977 8000  
sales@orega.com