

3532

PETAWAWA BOULEVARD

PETAWAWA | ON



WAREHOUSE/OFFICE SPACE FOR SALE

BUILDING SIZE:	15,120 sq. ft.
LAND SIZE:	2.24 acres
ASKING PRICE:	\$700,000.00
TAXES:	\$9,277.15 (2014)
ZONING:	C Zone - Commercial
CEILING HEIGHT:	18-20 ft clear ceiling height in warehouse area

PROPERTY HIGHLIGHTS

- Former Pepsi Co. office and warehouse space
- 18-20 ft clear height
- 2 drive in loading doors
- Excellent access to Highway 17 via Pacquette Road interchange
- The property is fully serviced to municipal standards including, water, sanitary sewer and storm drainage systems, hydro, natural gas, telephone and cable

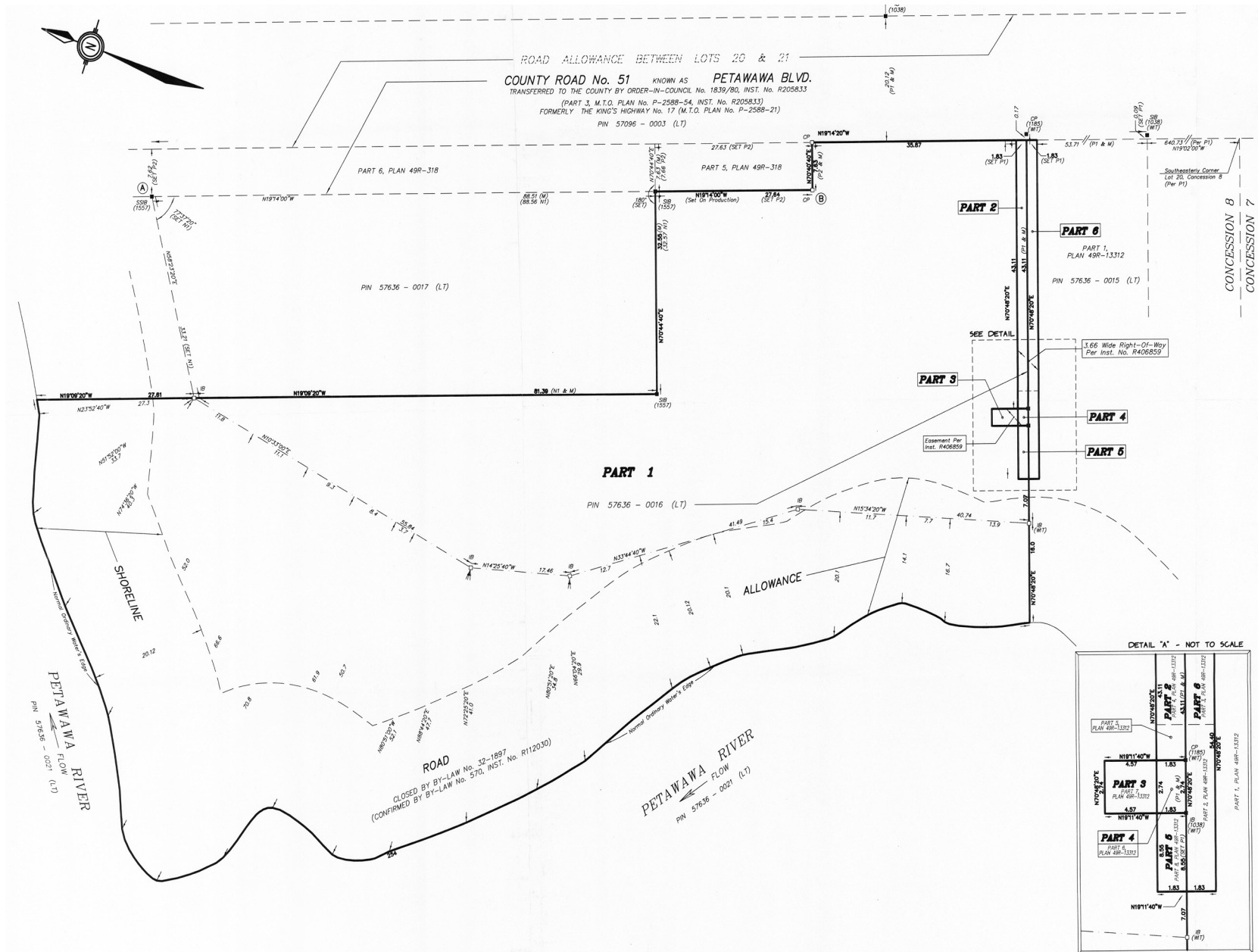


WAREHOUSE/OFFICE SPACE FOR SALE

3532 PETAWAWA BOULEVARD

PETAWAWA | ON

SITE PLAN





WAREHOUSE/OFFICE SPACE FOR SALE

3532 PETAWAWA BOULEVARD

PETAWAWA | ON

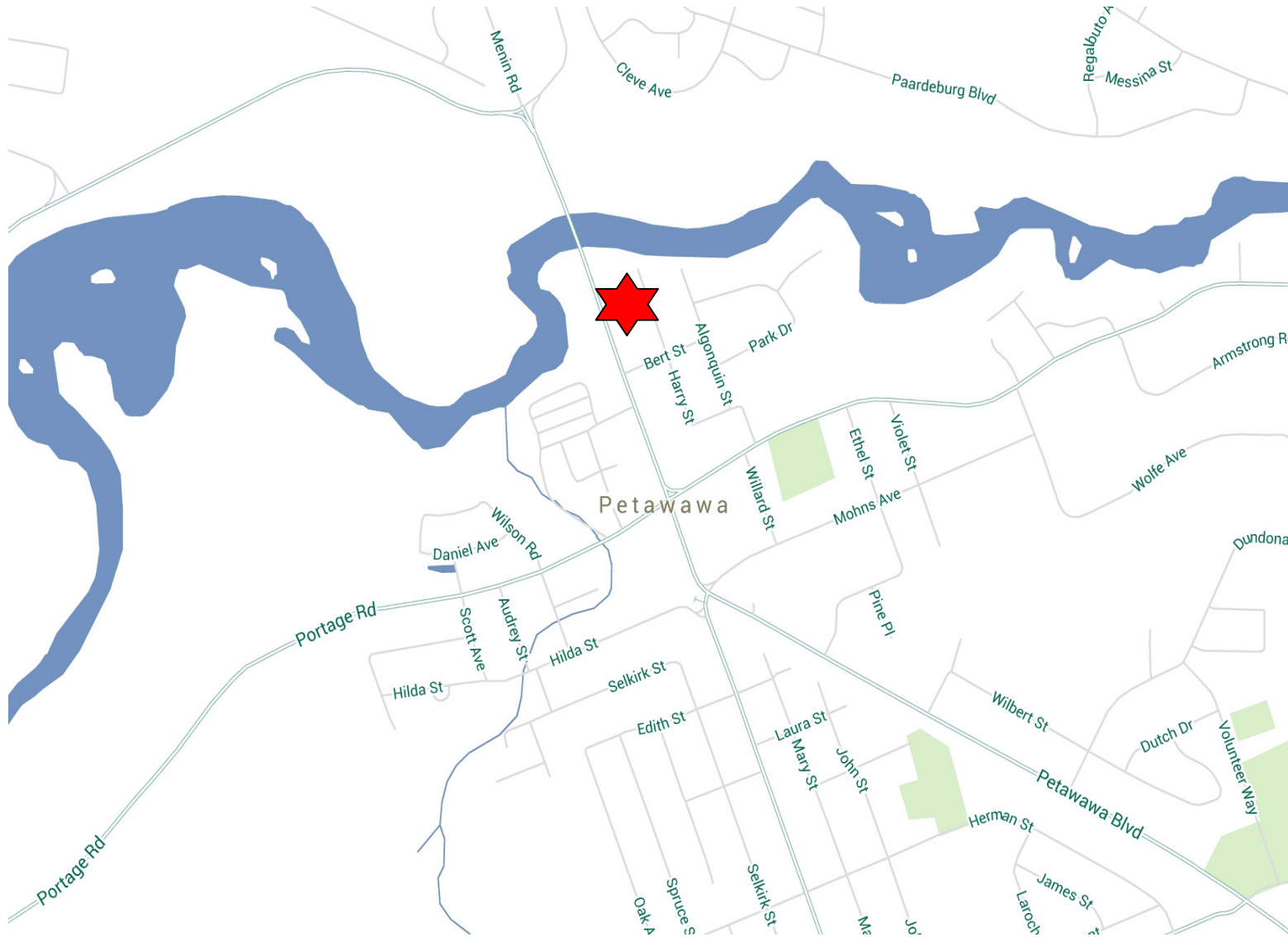




WAREHOUSE/OFFICE SPACE FOR SALE

3532 PETAWAWA BOULEVARD

PETAWAWA | ON



For further details, please contact:

IAN SHACKELL*
Vice President
613 782 2285
ian.shackell@cbre.com

DAVID JOHNSTON
Sales Representative
613 788 2760
david.t.johnston@cbre.com

CBRE LIMITED
Real Estate Brokerage
613 782 2266
613 782 2296

*Sales Representative

CBRE Limited | 333 Preston Street, 7th Floor | Ottawa, Ontario | T 613 782 2266 | F 613 782 2296 | www.cbre.ca

This disclaimer shall apply to CBRE Limited, Real Estate Brokerage, and to all other divisions of the Corporation; to include all employees and independent contractors ("CBRE"). The information set out herein, including, without limitation, any projections, images, opinions, assumptions and estimates obtained from third parties (the "Information") has not been verified by CBRE, and CBRE does not represent, warrant or guarantee the accuracy, correctness and completeness of the Information. CBRE does not accept or assume any responsibility or liability, direct or consequential, for the Information or the recipient's reliance upon the Information. The recipient of the Information should take such steps as the recipient may deem necessary to verify the Information prior to placing any reliance upon the Information. The Information may change and any property described in the Information may be withdrawn from the market at any time without notice or obligation to the recipient from CBRE. CBRE and the CBRE logo are the service marks of CBRE Limited and/or its affiliated or related companies in other countries. All other marks displayed on this document are the property of their respective owners. All Rights Reserved. Mapping Sources: Canadian Mapping Services canadamapping@cbre.com; DMTI Spatial, Environics Analytics, Microsoft Bing, Google Earth

