

2330

2330

EAST BIDWELL ST.

Folsom, CA

JERDE
WWW.JERDECRE.COM

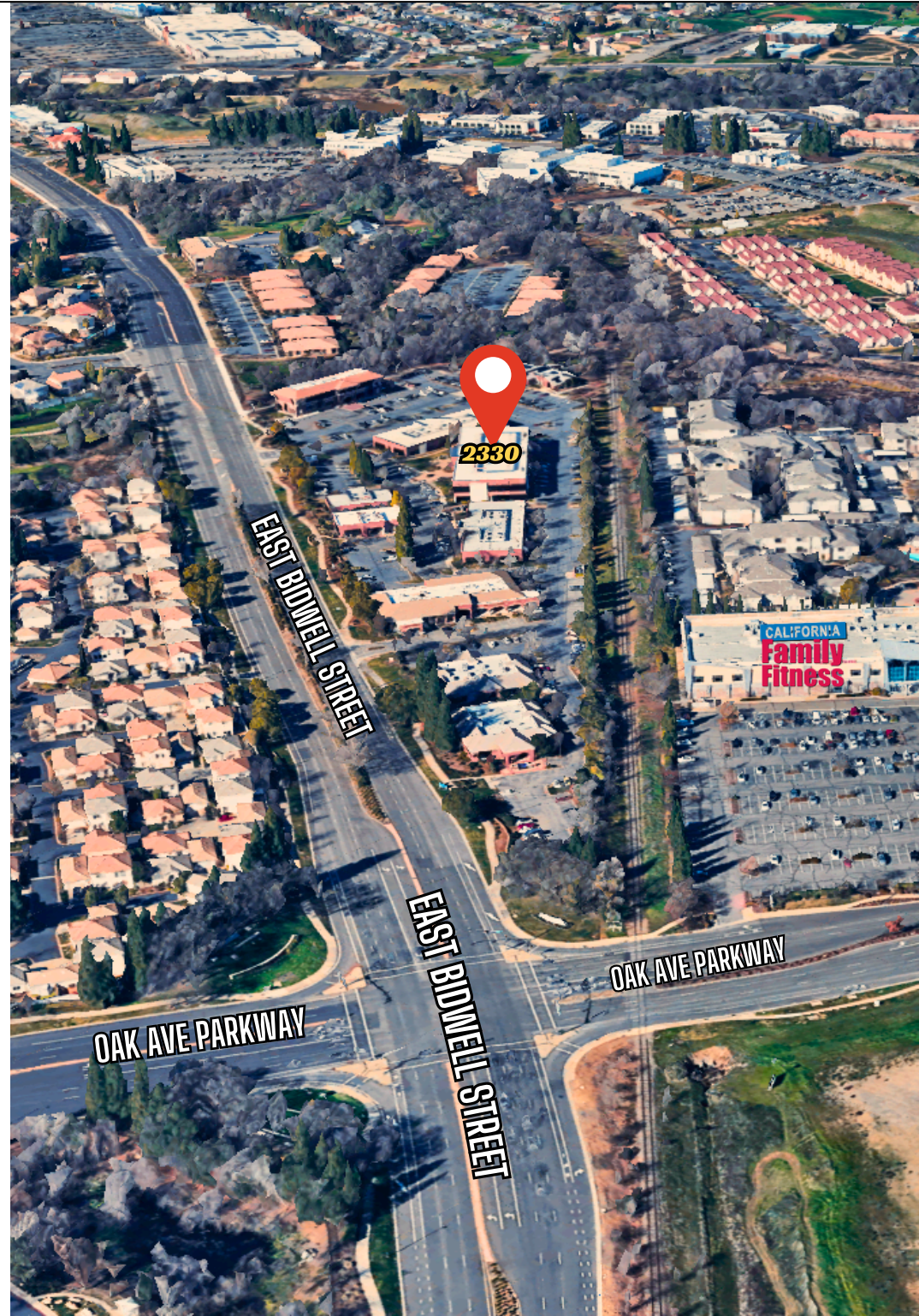
JOSIE JERDE

lic. 01344316

(916) 849-1514

josie@jerdecre.com

LOCATION & AMENITIES



BUILDING HIGHLIGHTS

 LUSH LANDSCAPING AND
OUTDOOR PATIO AREA

 CLOSE TO THE AMERICAN
RIVER BIKE TRAIL

 MODERN FINISHES,
EXPANSIVE WINDOWLINES

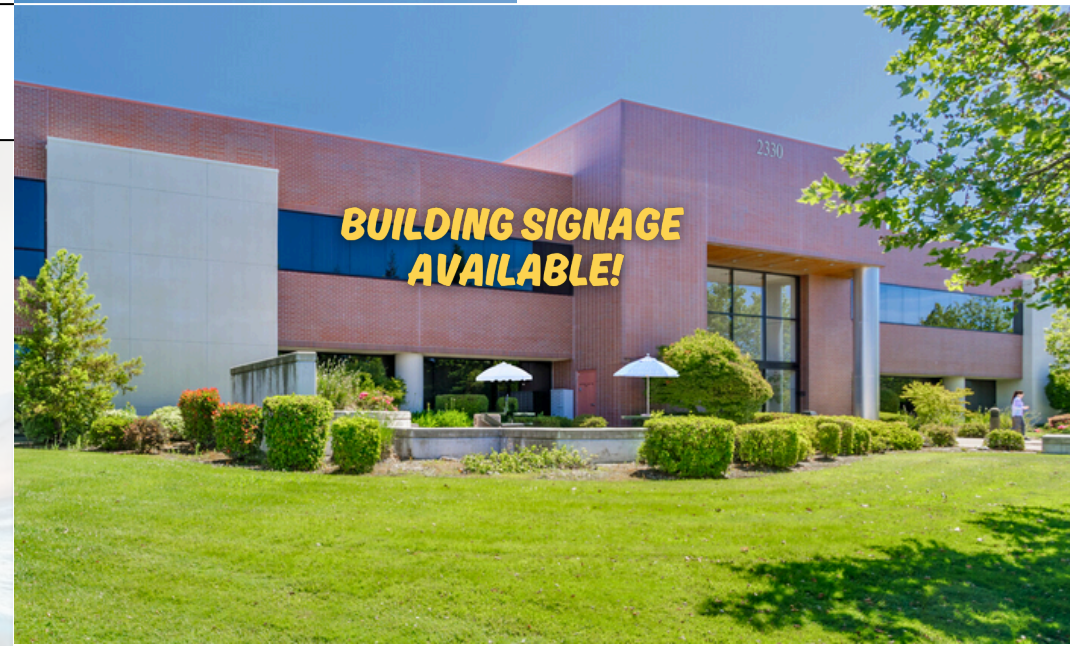
 BUILDING SIGNAGE
AVAILABLE

 PARKING RATIO:
5/1,000 SF (MED. USE OK!)

 IMMEDIATE PROXIMITY
TO MERCY HOSPITAL

 CLOSE TO A VARIETY OF
AMENITIES INCLUDING THE
PALLADIO MALL AND
HISTORIC FOLSOM

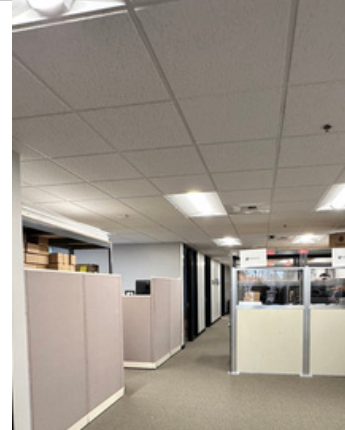
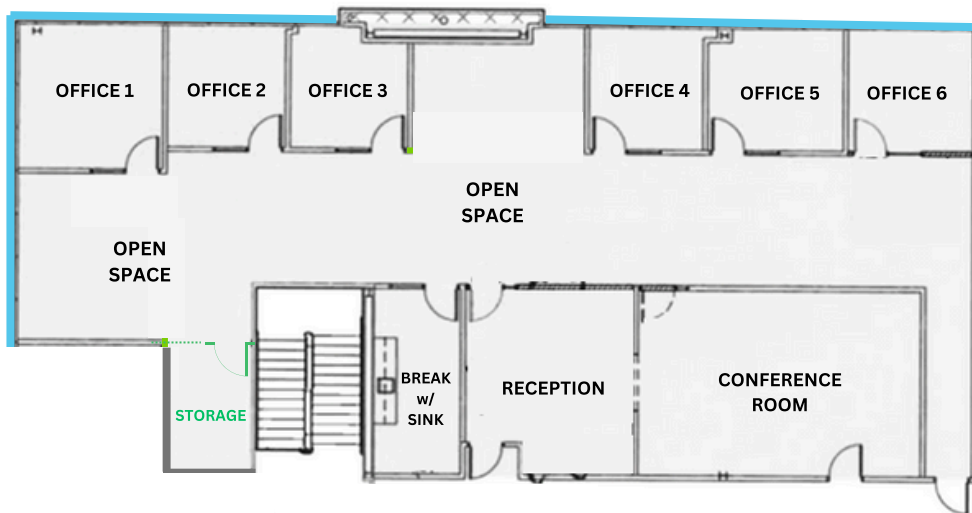
2330 EAST BIDWELL ST.




JERDE

SUITE 210

+/- 3,822 SF



JOSIE JERDE
lic. 01344316
(916) 849-1514
josie@jerdecre.com

 FLOOR-TO-CEILING GLASS