

ORIOLE LOGISTICS CENTER

16671 , 16681, & 16691 ORIOLE ROAD
FORT MYERS, FLORIDA 33912



**LEE &
ASSOCIATES**

COMMERCIAL REAL ESTATE SERVICES

Lee-FL.com



Capital Partners

ORIOLE LOGISTICS CENTER



PROPERTY FACTS - BUILDING 1

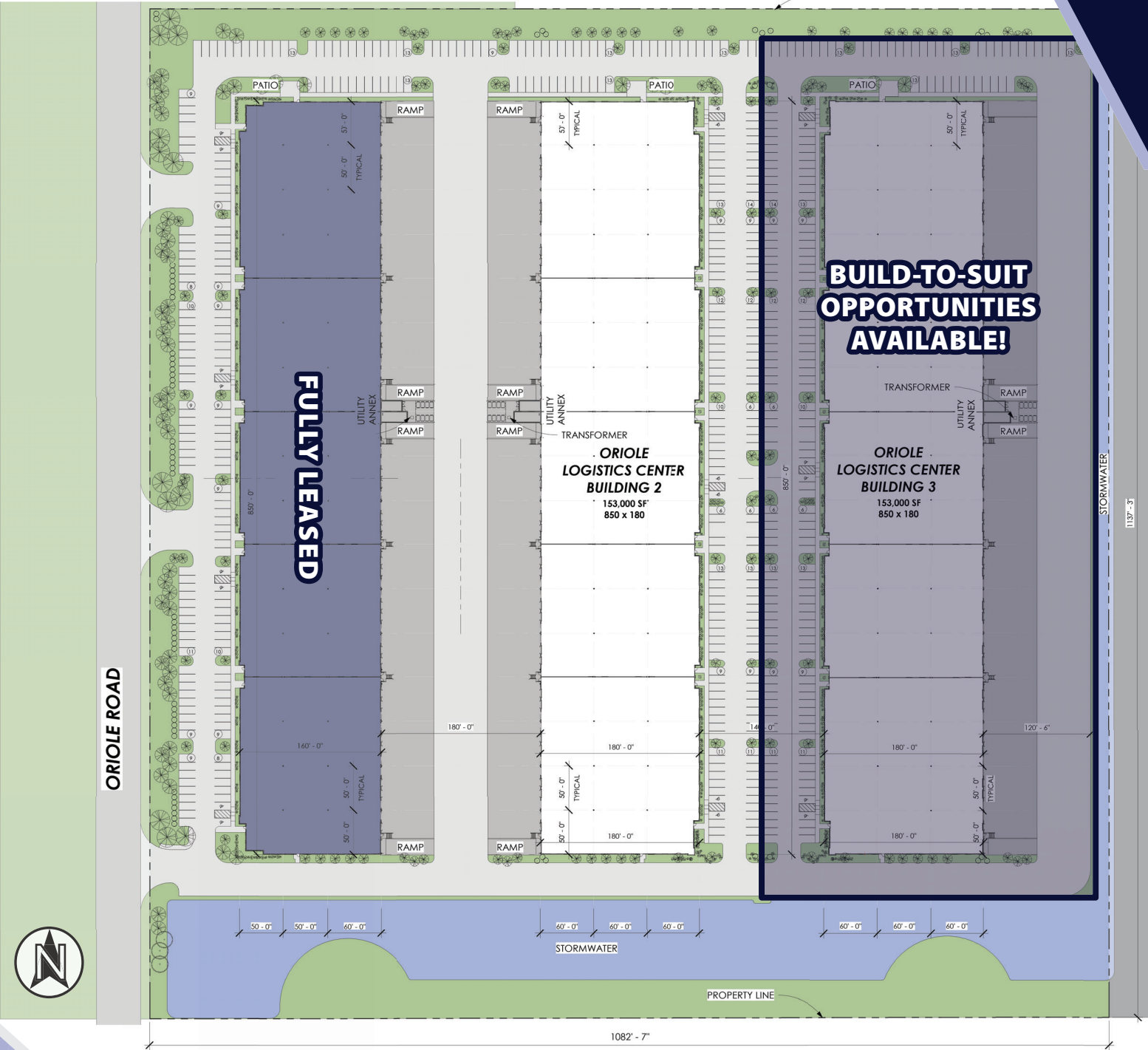
Address	16671 Oriole Road, Fort Myers, FL 33912		
Lease Rate	Negotiable	Column Spacing	50' x 50' w/60' Speed Bay (or Dock Bay)
Number of Buildings	One (1)	Building Depth	160'
Remaining Space	136,000 SF	Minimum Size	24,000 SF
Year Built	2015	Sprinkler	ESFR
Clear Height	28'	Zoning	MPD (Mixed-Use Planned Development)

~ FULLY LEASED! ~

PROPERTY FACTS - BUILDINGS 2 & 3

Address	16681 & 16691 Oriole Road, Fort Myers, FL 33912		
Lease Rate	Negotiable	Column Spacing	50' x 60'
Number of Buildings	Two (2)	Building Depth	180'
Remaining Space	153,000 SF	Minimum Size	27,000 SF
Year Built	2025	Sprinkler	ESFR
Clear Height	32'	Zoning	MPD (Mixed-Use Planned Development)

OVERALL SITE PLAN



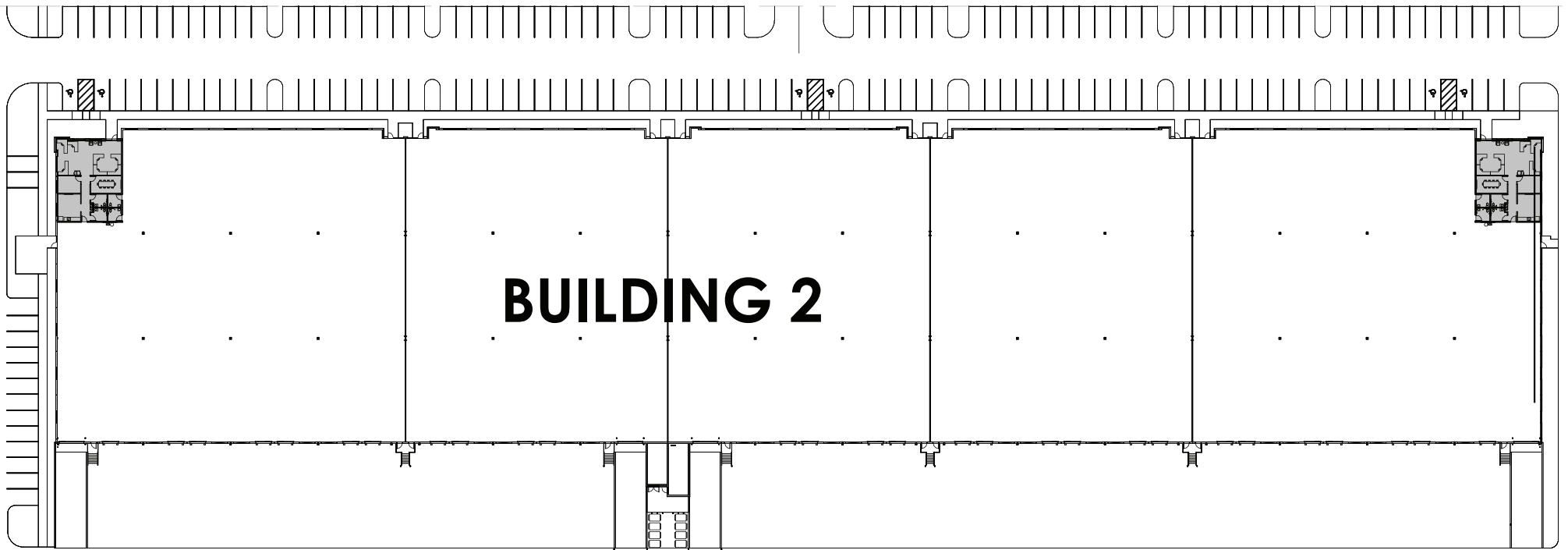
**BUILD-TO-SUIT
OPPORTUNITIES
AVAILABLE!**



Floor Plan

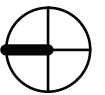
BUILDING 2

16681 Oriole Road



BUILDING 2 SPECIFICATIONS

- 153,000 SF Total
- Twenty-Eight (28) Dock Doors
- Four (4) Drive-In Doors Via Ramps
- 32' Clear Height
- 180' x 850'
- 202 Parking Spaces



Office Plan

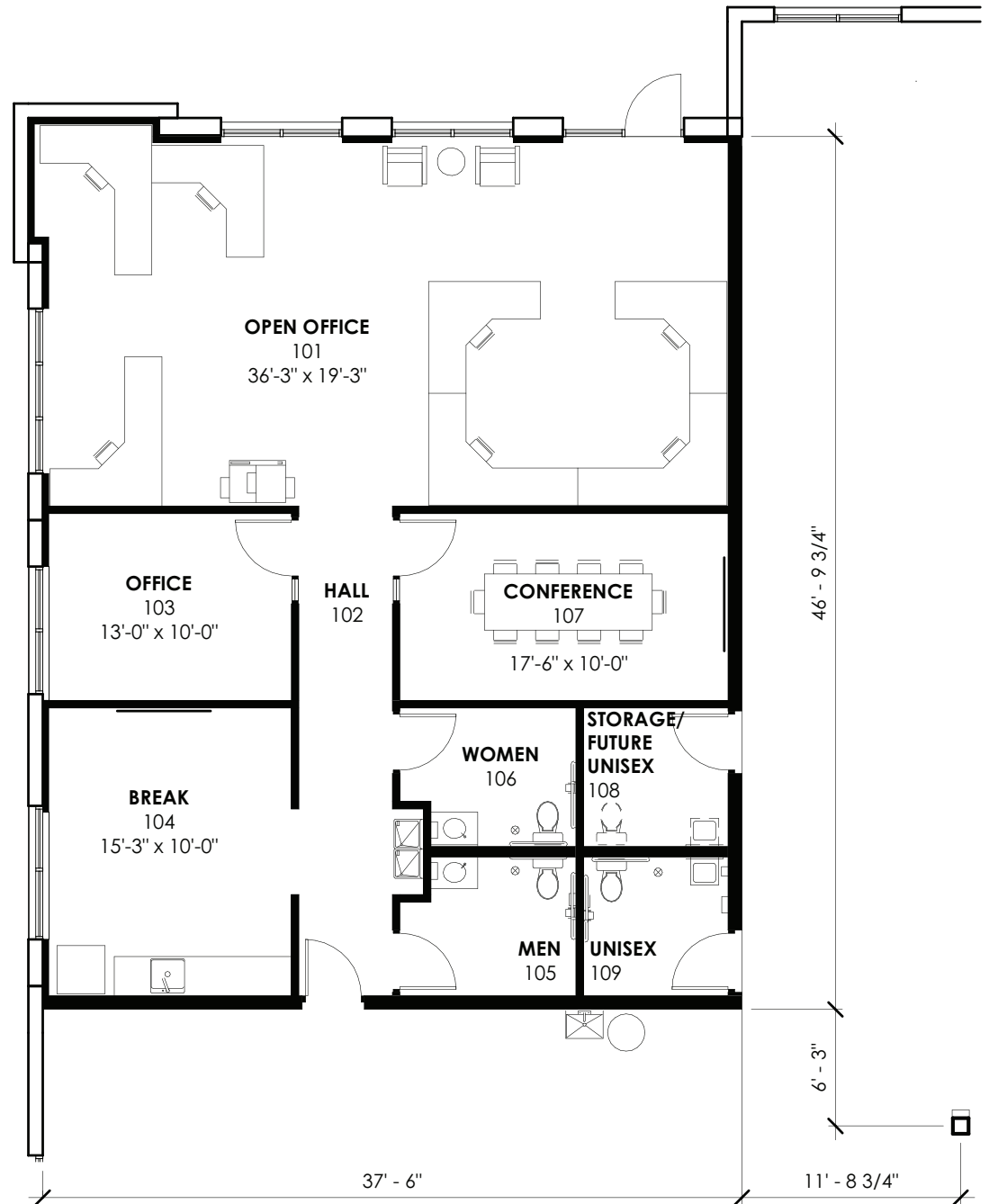
BUILDING 2

16681 Oriole Road



BUILDING 2

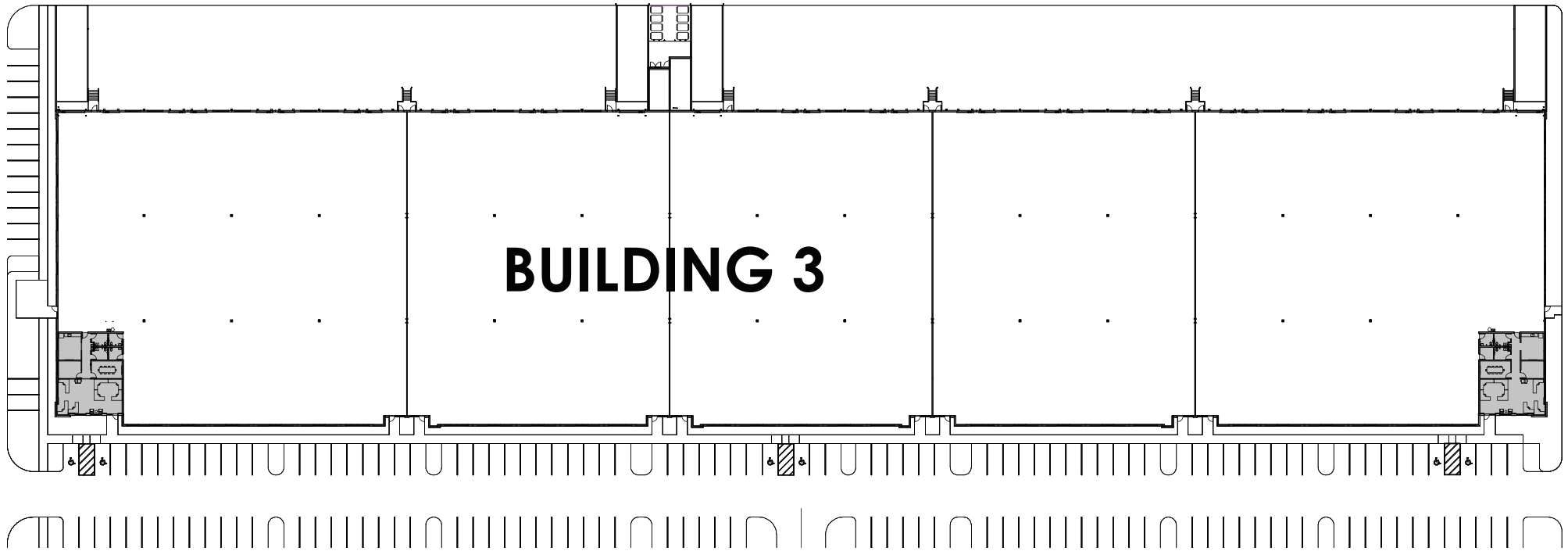
Office Detail
1,810 SF



Floor Plan

BUILDING 3

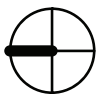
16691 Oriole Road



BUILDING 3 SPECIFICATIONS

- 153,000 SF Total
- Twenty-Eight (28) Dock Doors
- Four (4) Drive-In Doors Via Ramps
- 32' Clear Height
- 180' x 850'
- 202 Parking Spaces

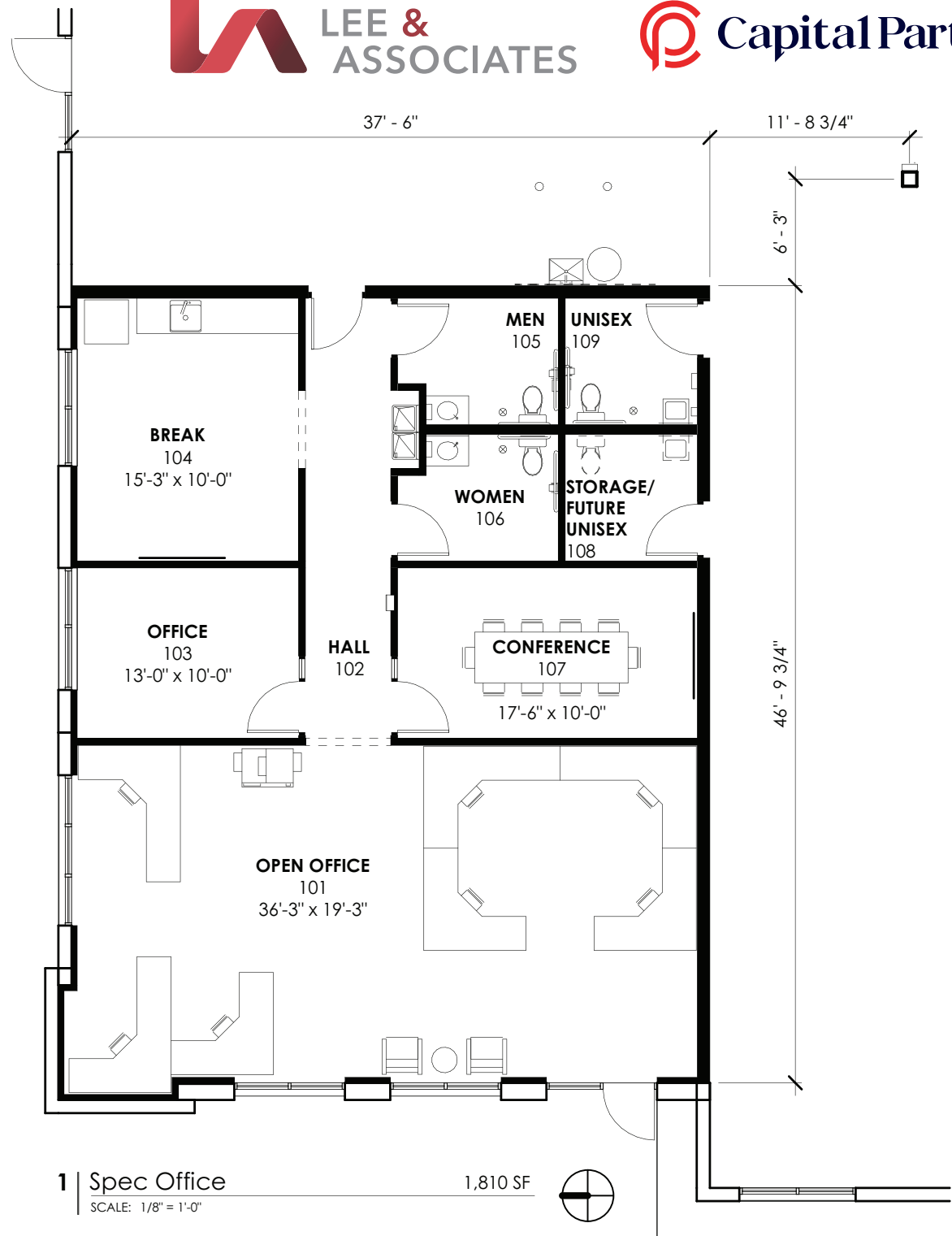
**BUILD-TO-SUIT
OPPORTUNITIES
AVAILABLE!**



Office Plan

BUILDING 3

16691 Oriole Road



BUILDING 3

Office Detail
1,810 SF

1 | Spec Office
SCALE: 1/8" = 1'-0"

1,810 SF



Current
CONSTRUCTION
Status



As of
April 17, 2026

LOCATION AERIAL



FREIGHTLINER
FIDELITONE
ALGENOL
BEACON
CARmax
Velocity ENGINEERING SERVICES
rice
INSULATION & GLASS
CALIFORNIA CLOSETS
TEN-8
TREND
TRENDS

TESLA
WHITE CAP
ABC
Supply Co. Inc.
Cummins
amazon.com
MARJAM

Frito Lay
PerformanceHealth
Surgery Center
NEO GENOMICS
FRANTZ
EyeCare
SCOTLYNN

CD
CLIVE DANIEL
Capital Partners
ORIOLE LOGISTICS CENTER
THE HOME DEPOT
Wawa

FASTENAL
RaceTrac
ORIOLE RD
Three Oaks Pkwy
Domestic Ave

SLICK CITY ACTION PARK
PRIME FIBER
HD SUPPLY
GCM
Consulting Solutions, Inc.
RIVIAN

wayfair
TRANE
VIVID ev
G&G DELIVERY SERVICES INC
PGI INNOVATIONS

LEHMAN
PIPE AND SUPPLY INC
Coca-Cola
UNIVERSITY BOTTLING

75
128
GULF COAST TOWN CENTER

Terminal Access Rd
Treeline Ave
Alico Rd



PRESENTED BY



COMMERCIAL REAL ESTATE SERVICES



Capital Partners is an industry-leading, Minneapolis-based, commercial real estate developer, investor, and operator. For nearly three decades, Capital Partners has acquired, developed, and managed more than \$1.5 billion of institutional quality industrial property totaling more than 14 million square feet. Capital Partners' investment platform includes ownership of industrial assets, development, asset management, property management services, and full in-house accounting services.



BOB JOHNSTON, SIOR
PRINCIPAL
(239) 210-7601
BJOHNSTON@LEE-ASSOCIATES.COM



JERRY MESSONNIER, SIOR
PRINCIPAL
(239) 210-7610
JMESSONNIER@LEE-ASSOCIATES.COM



FRANK V. MARTONE
VICE PRESIDENT
(239) 210-7605
FMARTONE@LEE-ASSOCIATES.COM

LEE & ASSOCIATES | NAPLES - FT. MYERS

LEE-FL.COM

FORT MYERS, FL 33966



The information and details contained herein have been obtained from third-party sources believed to be reliable, however, Lee & Associates has not independently verified its accuracy. Lee & Associates makes no representations, guarantees, or express or implied warranties of any kind regarding the accuracy or completeness of the information and details provided herein, including but not limited to, the implied warranty of suitability and fitness for a particular purpose. Interested parties should perform their own due diligence regarding the accuracy of the information. The information provided herein, including any sale or lease terms, is being provided subject to errors, omissions, changes of price or conditions, prior sale or lease, and withdrawal without notice. Third-party data sources: CoStar Group, Inc. and Lee Proprietary Data. © Copyright 2019 Lee & Associates all rights reserved.