



1270 Avenida Acaso, Unit A

Camarillo, California 93012

Lease Highlights

- Part of A Master Planned Business Park
- Manufacturing & Distribution to R&D/Flex
- Multi-Tenant Building
- 2,327 SF of Office Space
- One (1) 12'x12' Ground Level Loading Door
- 200 Amps, 120/208, 3 Phase, 4 Wire

Offering Summary

Available SF:	3,690 SF
Lease Rate:	\$1.30 SF/month (Gross)
Lot Size:	0.07 Acres
Building Size:	29,653 SF

Demographics	1 Mile	5 Miles	10 Miles
Total Households	5,714	34,643	116,137
Total Population	16,171	94,603	370,983
Average HH Income	\$156,870	\$156,722	\$134,848

For more information

Timothy P. Foutz

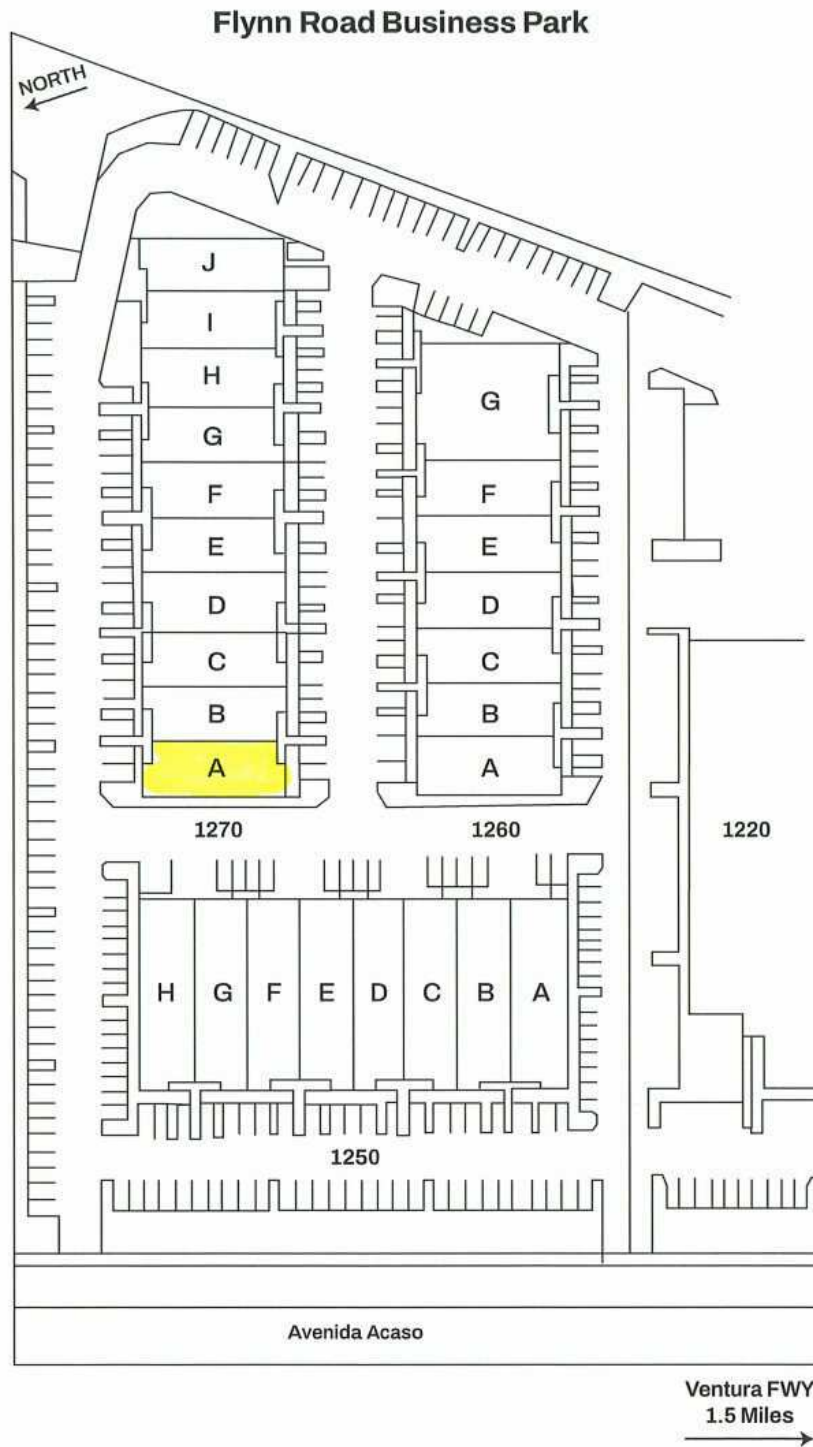
O: 818.742.1614
tfoutz@naicapital.com | CalDRE #00389515

Bill Kiefer, SIOR

O: 805.288.5467
bkiefer@naicapital.com | CalDRE #00828915

For Lease

1270 Avenida Acaso, Unit A



NAI Capital

Timothy P. Foutz
818.742.1614
tfoutz@naicapital.com
CalDRE #00389515

Bill Kiefer, SIOR
805.288.5467
bkiefer@naicapital.com
CalDRE #00828915

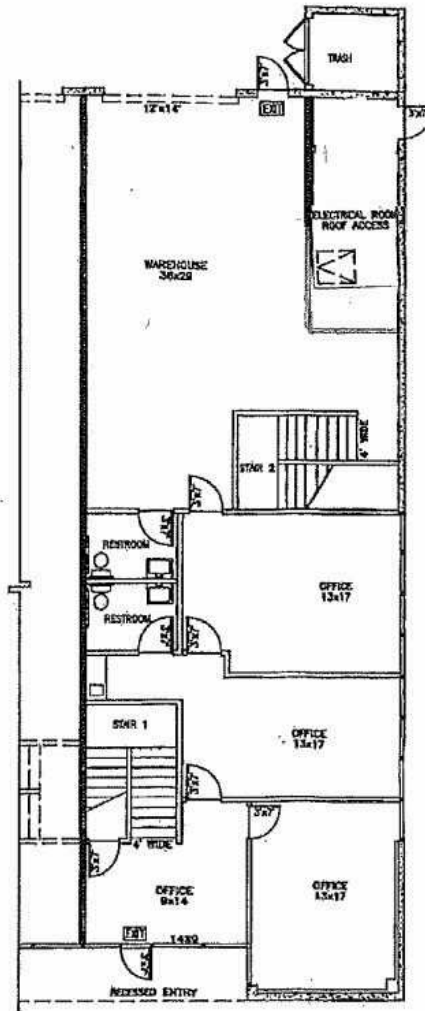
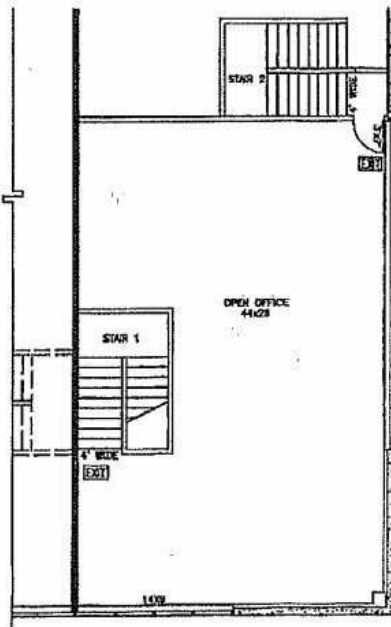
NAI Capital
COMMERCIAL REAL ESTATE SERVICES, WORLDWIDE

For Lease

1270 Avenida Acaso, Unit A

1270 Avenida Acaso
Unit A

1st Floor Office - 1,207 SF
Mezz. - 1,120 SF
Warehouse - 1,363 SF
TOTAL AREA = 3,690 SF

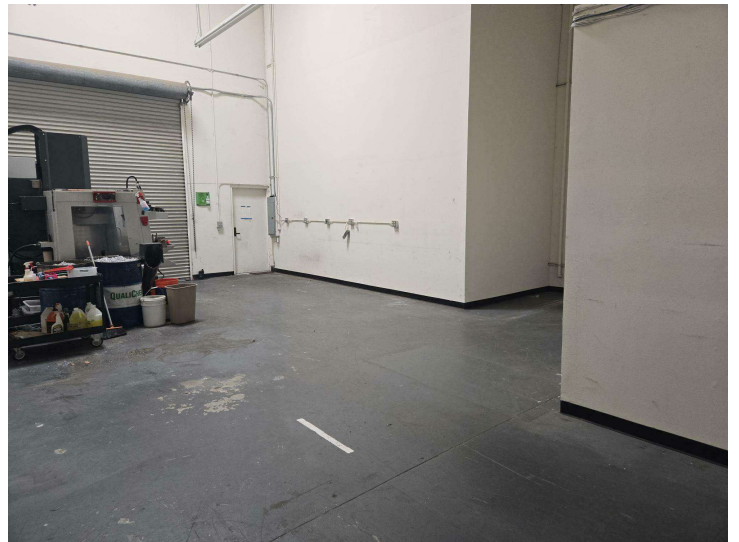


Timothy P. Foutz
818.742.1614
tfoutz@naicapital.com
CalDRE #00389515

Bill Kiefer, SIOR
805.288.5467
bkiefer@naicapital.com
CalDRE #00828915

For Lease

1270 Avenida Acaso, Unit A

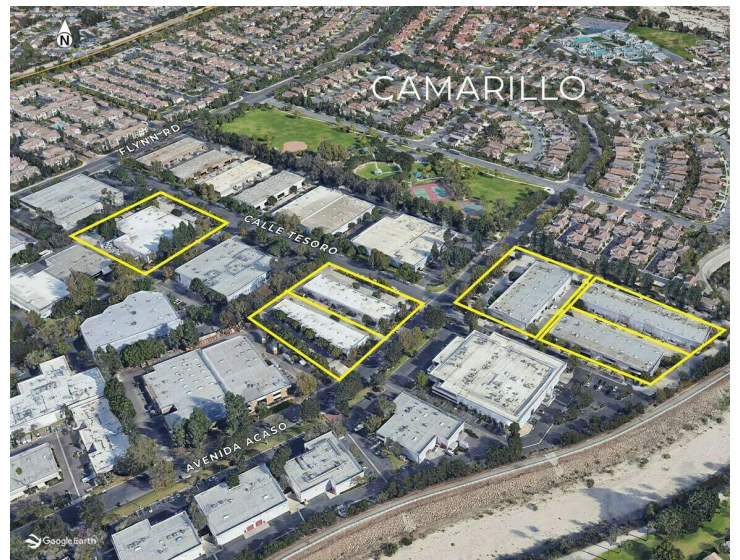
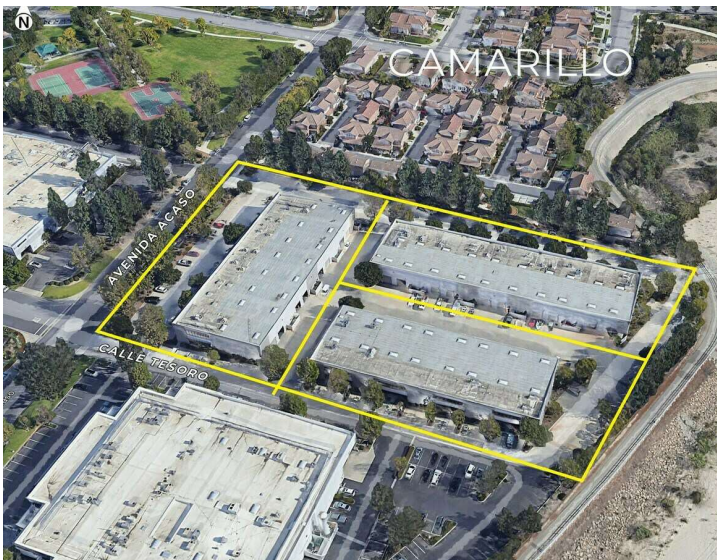


Timothy P. Foutz
818.742.1614
tfoutz@naicapital.com
CalDRE #00389515

Bill Kiefer, SIOR
805.288.5467
bkiefer@naicapital.com
CalDRE #00828915

For Lease

1270 Avenida Acaso, Unit A

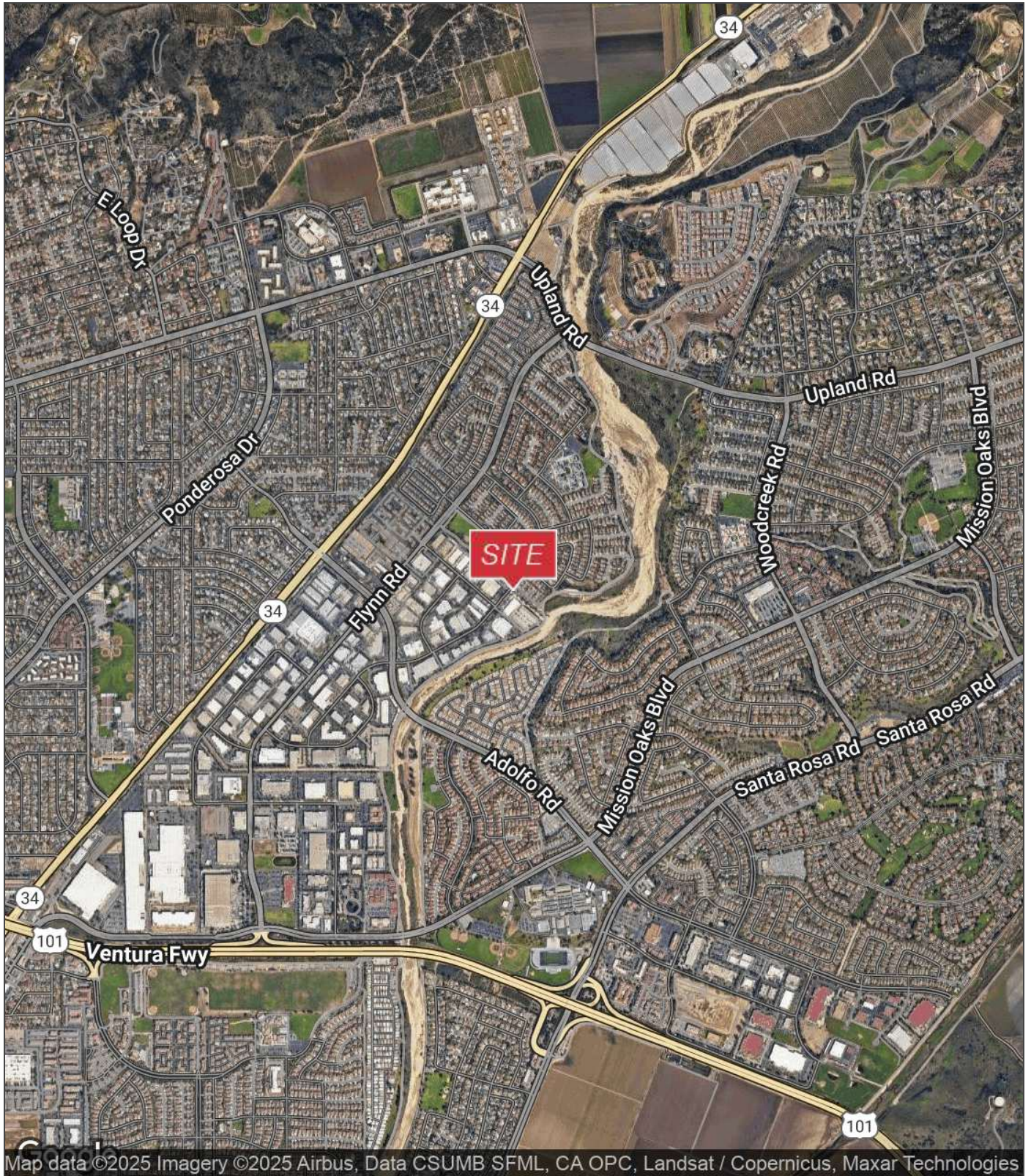


Timothy P. Foutz
818.742.1614
tfoutz@naicapital.com
CalDRE #00389515

Bill Kiefer, SIOR
805.288.5467
bkiefer@naicapital.com
CalDRE #00828915

For Lease

1270 Avenida Acaso, Unit A



Timothy P. Foutz
818.742.1614
tfoutz@naicapital.com
CalDRE #00389515

Bill Kiefer, SIOR
805.288.5467
bkiefer@naicapital.com
CalDRE #00828915