

# THE GOTHAM BUILDING

384 E 149th Street

Bronx, New York



## AVAILABLE OFFICE SPACES

- Suites 202A&B - (1,000 SF) Plus (1,763 SF)  
Combined is 2,763 SF
- Suite 330 - 2,000 SF
- Suite 504a - 1,500 SF
- Suite 602 - (1,454 SF)

**Rent: \$32 - \$34 psf**

- Subway and bus stops directly at the building
- 2 ADA Elevators
- Doorman Building

Rick Stassa

[Rick@emeraldcpny.com](mailto:Rick@emeraldcpny.com)

646-960-6800

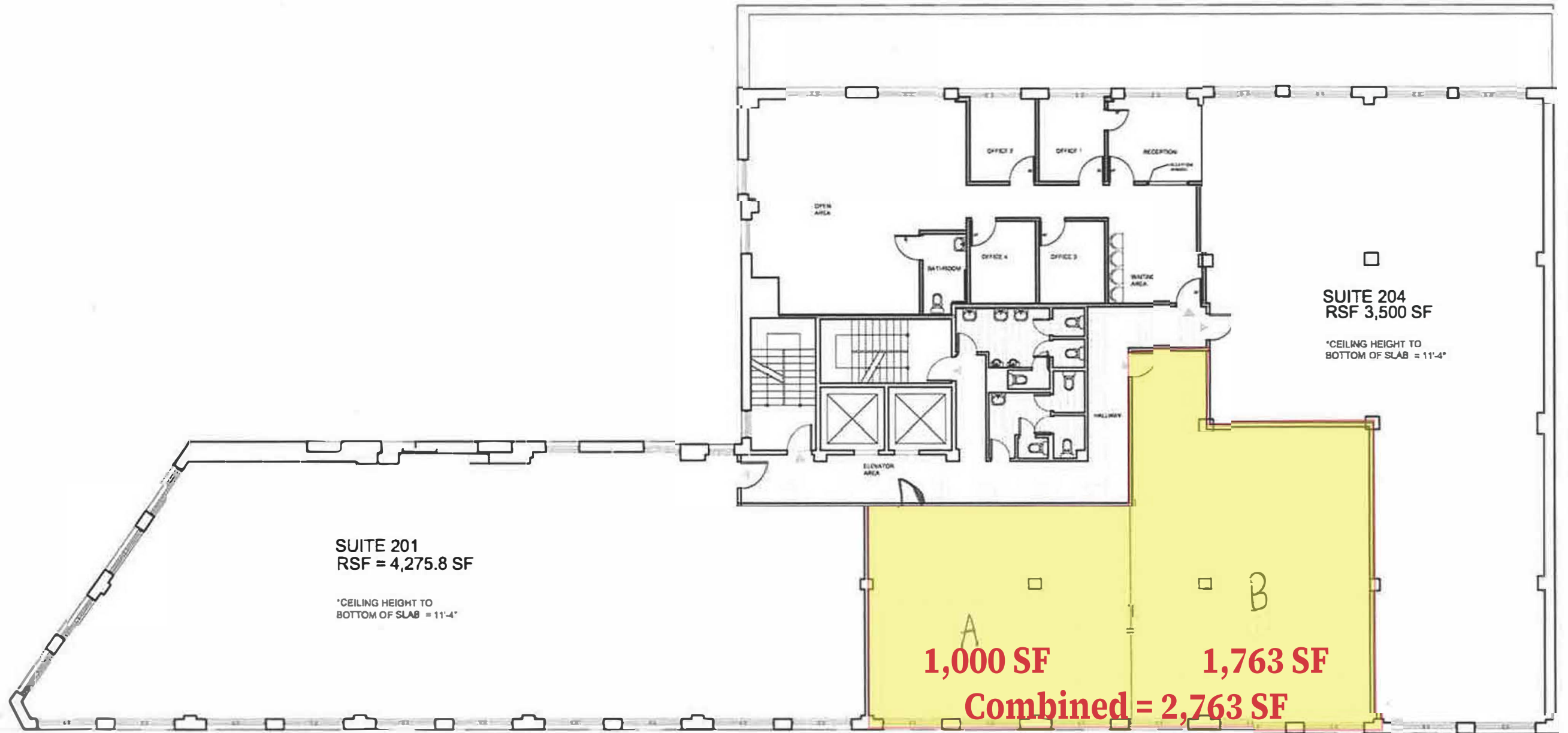
[www.emeraldcpny.com](http://www.emeraldcpny.com)



All information furnished herein is from sources deemed reliable. No warranty or representation is made to the accuracy thereof and it is submitted subject to errors, omissions and/or changes without notice.

# Suites 202A&B

# 384 E 148th Street



SUITE 201  
RSF = 4,275.8 SF

\*CEILING HEIGHT TO  
BOTTOM OF SLAB = 11'-4"

SUITE 204  
RSF 3,500 SF

\*CEILING HEIGHT TO  
BOTTOM OF SLAB = 11'-4"

**1,000 SF**

**1,763 SF**

**Combined = 2,763 SF**

PROJECT:  
384 E 149TH ST -GOTHAM- 2ND FL PLAN -

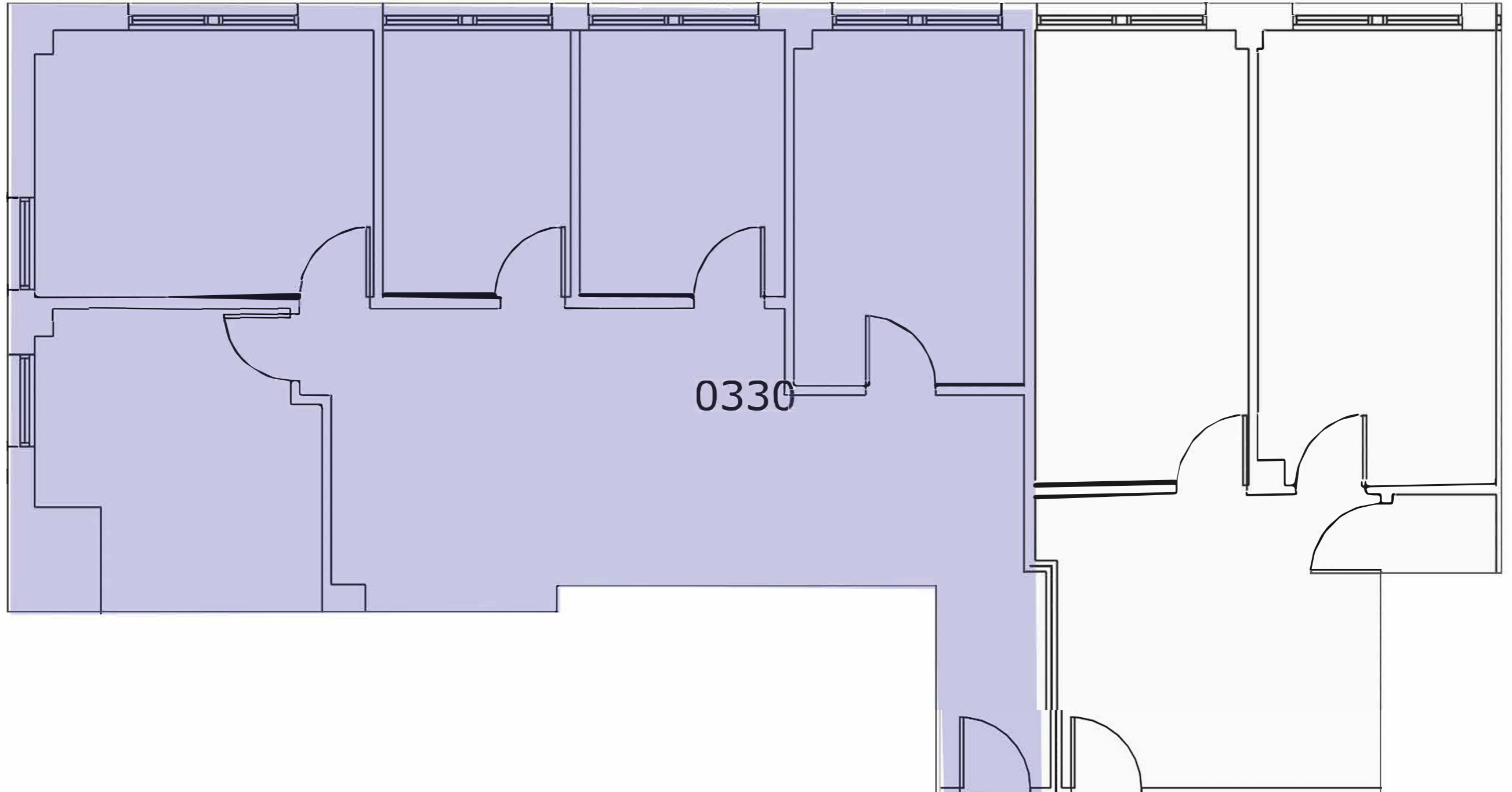
NOTES:

DATE:

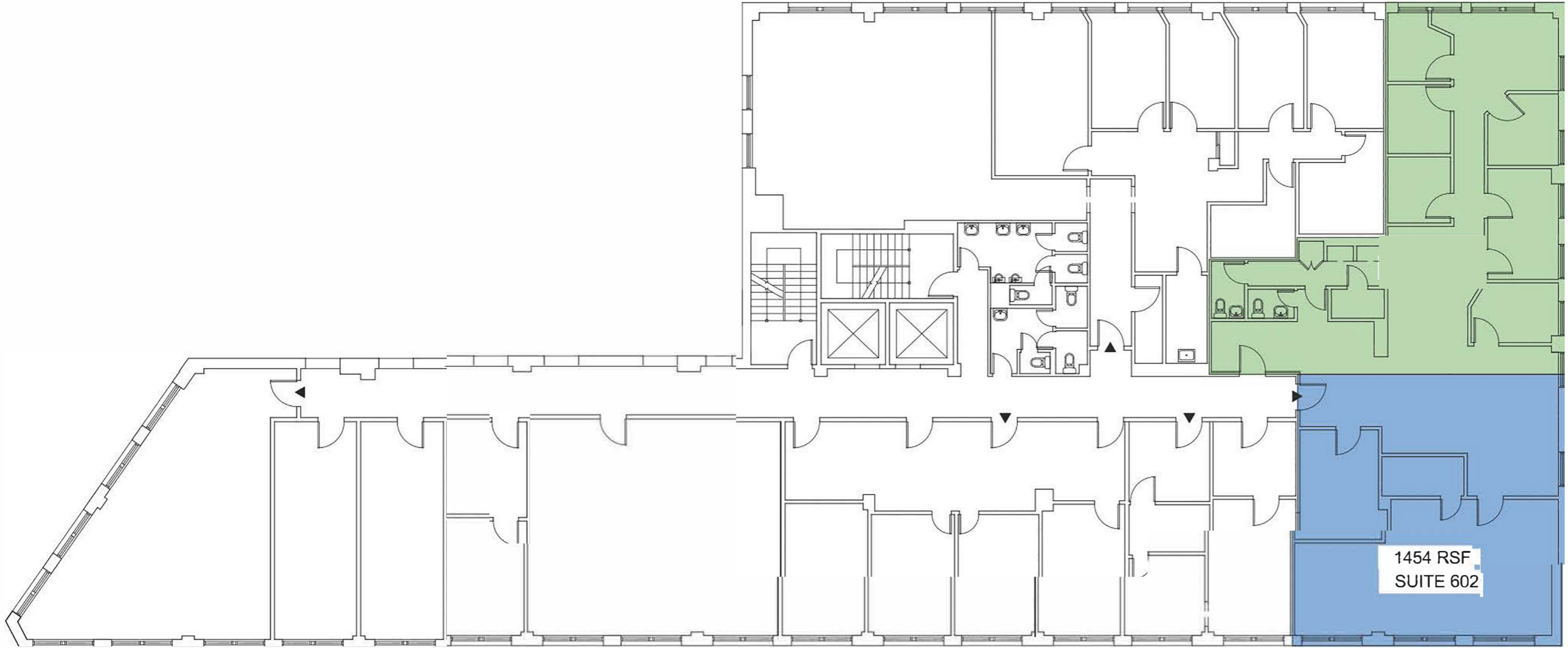
SCALE:  
N/S

**Suite 330 2,000 SF**

© 2014  
10/27/2014



# Suite 602



TITLE:  
384 E 149TH ST- 6TH FLOOR LOD

NOTES:

SCALE:  
N/S