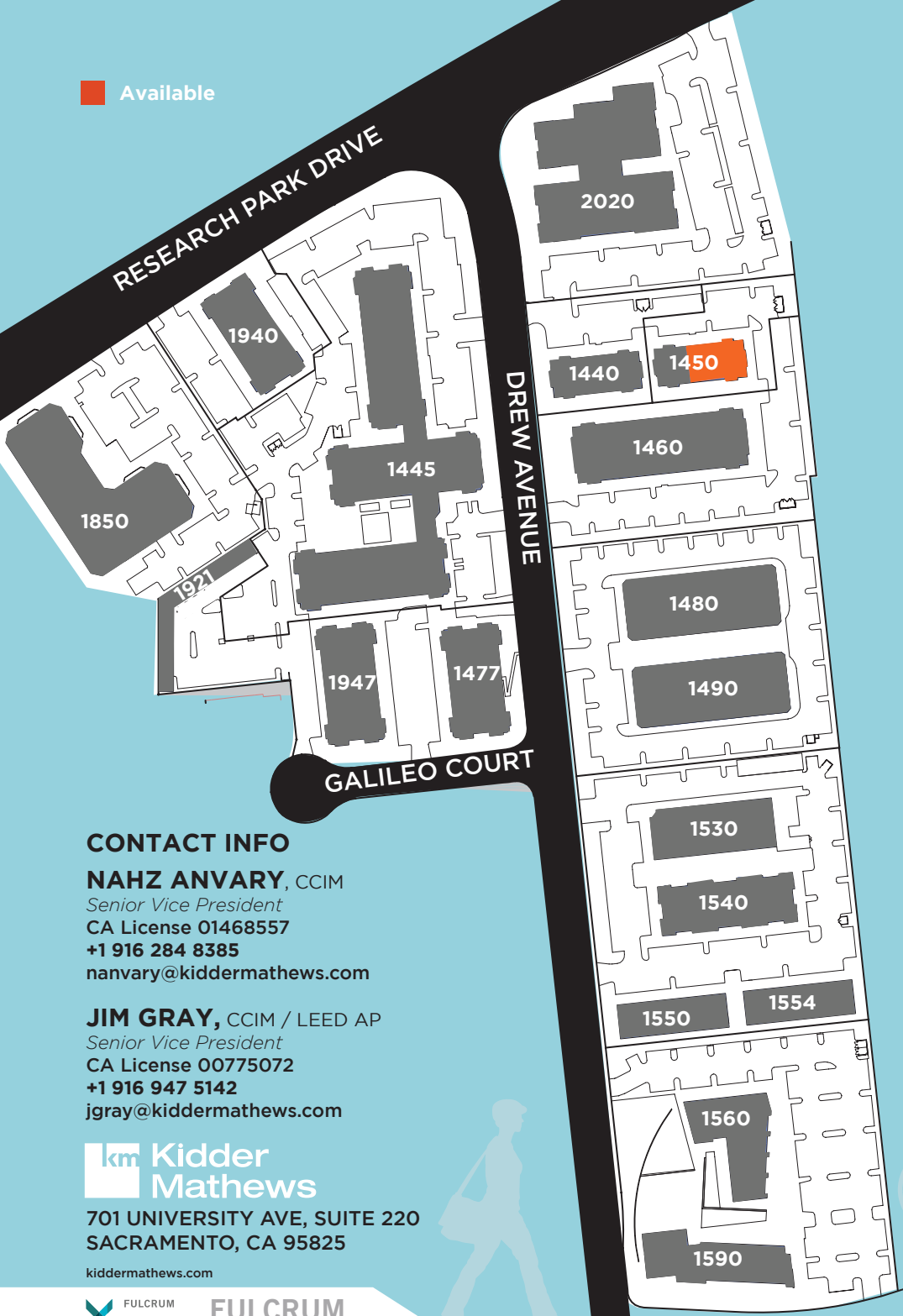


Available



CONTACT INFO

NAHZ ANVARY, CCIM

Senior Vice President
CA License 01468557
+1 916 284 8385
nanvary@kiddermathews.com

JIM GRAY, CCIM / LEED AP

Senior Vice President
CA License 00775072
+1 916 947 5142
jgray@kiddermathews.com



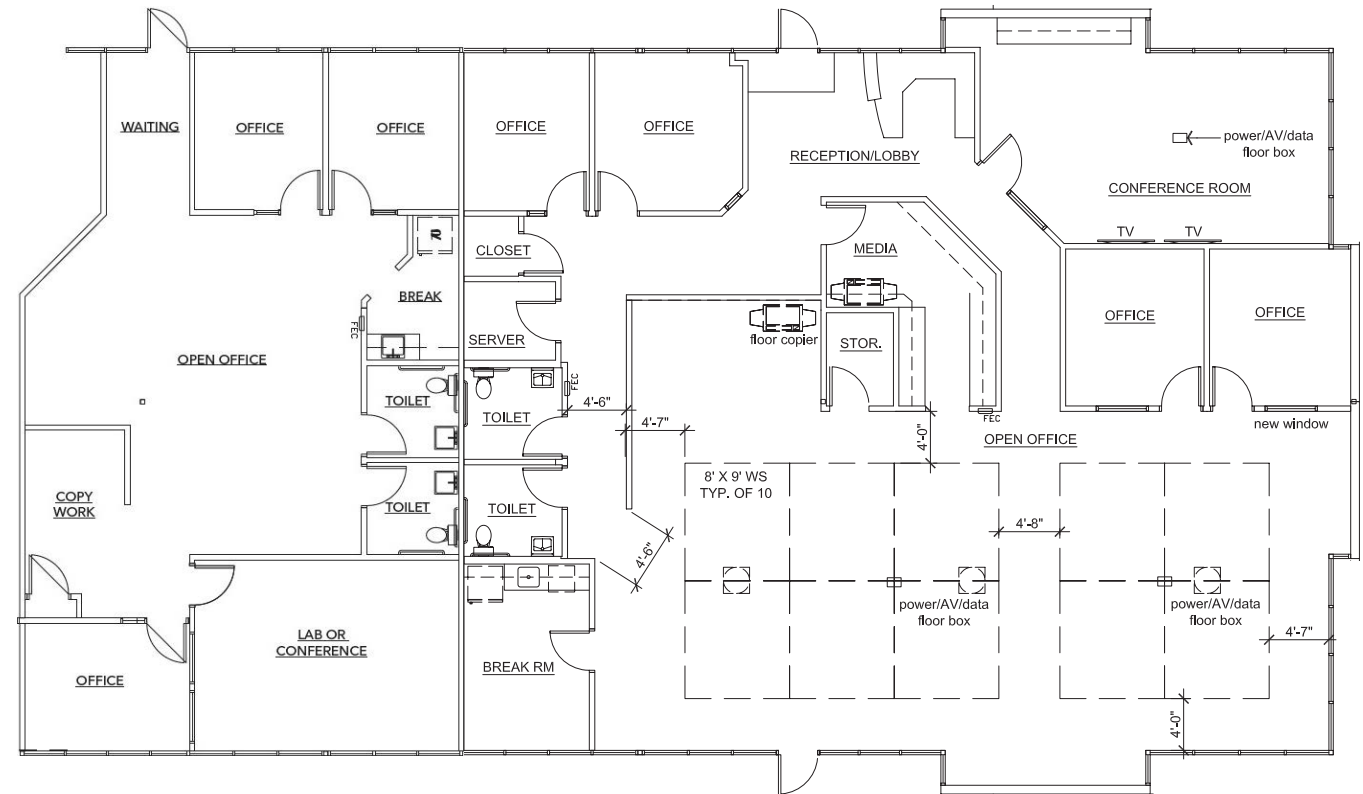
701 UNIVERSITY AVE, SUITE 220
SACRAMENTO, CA 95825

kiddermathews.com



DAVIS CALIFORNIA

UNIVERSITY RESEARCH PARK, DAVIS CA



FOR LEASE

±5,481 RSF

Combination of Suite 150 and 200. Reception/lobby area, mix of private offices and open area, 2 large conference rooms, break room/kitchen, copy/filing, storage, server areas.

\$14,250 Per Month

IMMEDIATE

1450 DREW AVENUE SUITE 150 & 200